

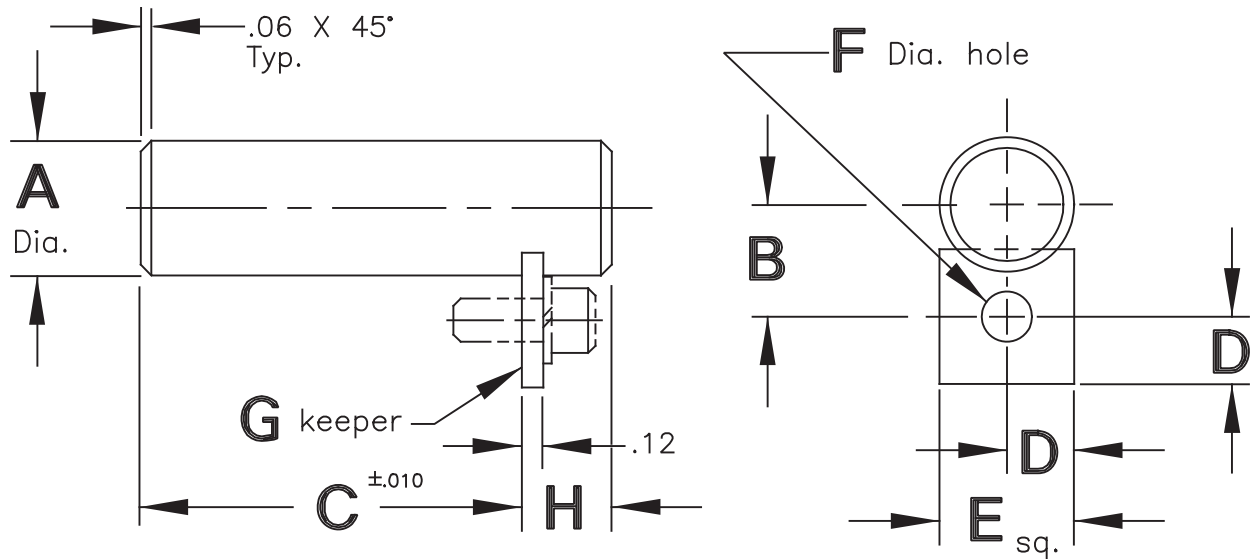
Detail Standard Co.

SECTION B
STRAIGHT SHAFTS

Detail Standard Co.

KEEPER PIN ASSEMBLY Type KPH, KPT, KPA & KPC

SEE PAGE E-1
FOR KEEPERS



A Dia.	A Dia. Tolerance				B	D	E	F	G	H	CAD FILE NO.
	KPH	KPA	KPT	KPC							
.250					.31	.25	.50	.22	K-1	.40	KP250
.312					.34	.25	.50	.22	K-1	.40	KP312
.375					.38	.25	.50	.22	K-1	.40	KP375
.438					.47	.38	.75	.28	K-2	.50	KP438
.500	+ .000	+ .000	- .0005	+ .000	.50	.38	.75	.28	K-2	.50	KP500
.625	- .001	- .002	- .0015	- .002	.56	.38	.75	.28	K-2	.50	KP625
.750					.62	.38	.75	.28	K-2	.50	KP750
.875					.69	.38	.75	.28	K-2	.50	KP875
1.000					.88	.50	1.00	.34	K-3	.56	KP1000
1.250					1.00	.50	1.00	.34	K-3	.56	KP1250

Type

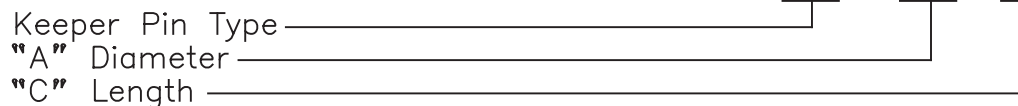
Material & Heat Treat

KPH 12L14 C.R.S., Carb., Hdn. & Gr., Rock. "C" 55-60, .03 Min. Case.
 KPA Turned, Ground & Polished, Rock. "C" 28-32 Uniform Throughout.
 KPT 1045 Turned, Ground & Polished.
 KPC 1018 C.R.S.

Keeper included with assembly (screw not included)

Model Number Development

Detail Standard Pin Ass'y
 KPH -.500- 2.50



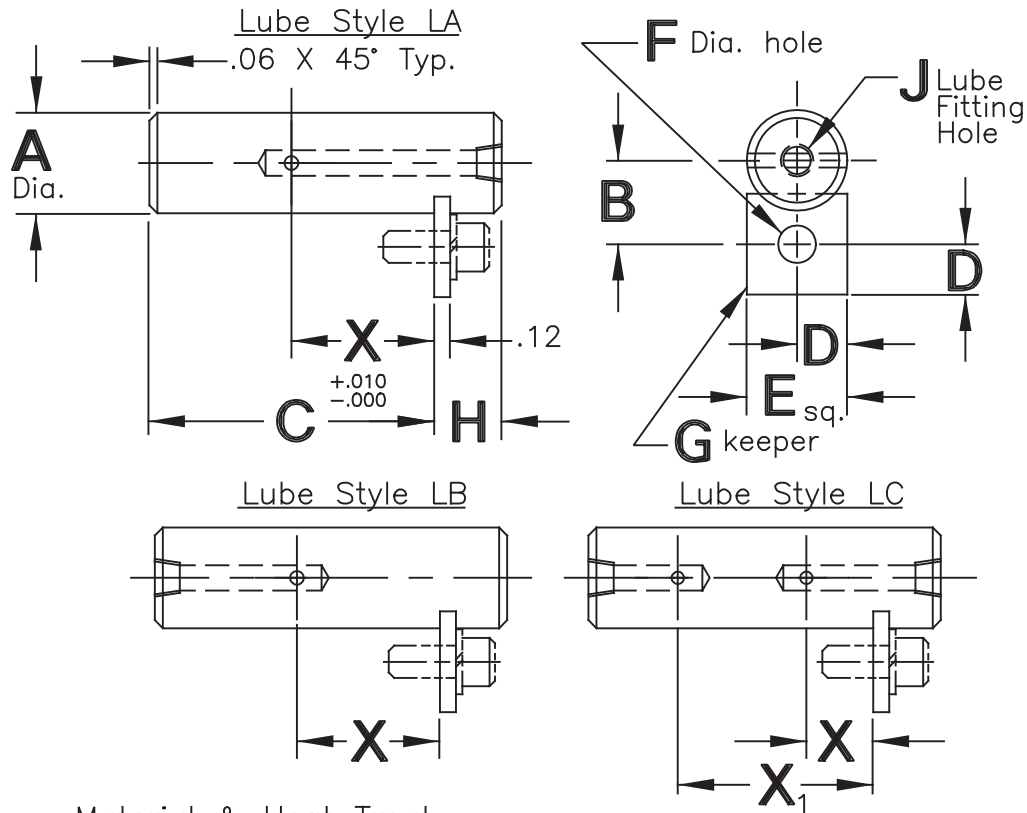
NOTE: Standard lengths for diameters .50 and under are from 1.00" to 3.00" in .25" increments, and standard lengths for diameters .62 and over are from 3.00" to 6.00" in .50" increments. Other lengths may be ordered as "special" items.

To order this product METRIC, use 'M' before the model number and millimeters for dimensions. Example: MKPH-12-64

Detail Standard Co.

KEEPER PIN ASSEMBLY

SEE PAGE E-1
FOR KEEPERS



Type Material & Heat Treat

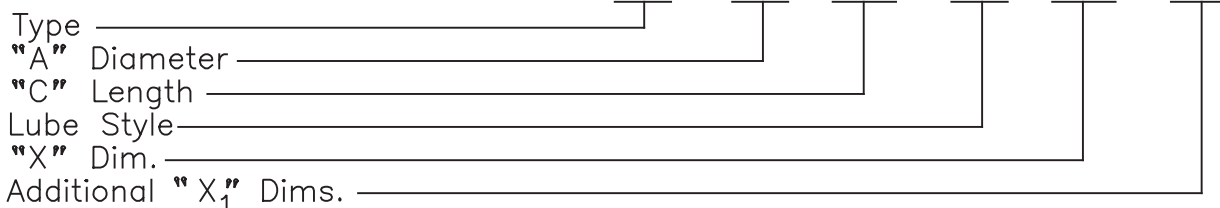
KPH 12L14 C.R.S., Carb., Hdn. & Gr., Rock "C" 55-60, .03 Min. Case.
 KPA Turned, Ground & Polished, Rock "C" 28-32 Uniform Throughout
 KPT 1045 Turned, Ground & Polished.
 KPC 1018 C.R.S.

A Dia.	A Dia. Tolerance				B	D	E	F	G	H	J		
	KPH	KPA	KPT	KPC							Style LA	Style LB	Style LC
.375					.38	.25	.50	.22	K-1	.40	5/32 Drive	1/4-28 ST	5/32 Drive
.438					.47	.38	.75	.28	K-2	.50	5/32 Drive	1/4-28 ST.	5/32 Drive
.500					.50	.38	.75	.28	K-2	.50	5/32 Drive	1/4-28 ST	5/32 Drive
.625	+ .000	+ .000	- .0005	+ .000	.56	.38	.75	.28	K-2	.50	1/4-28 ST	1/8-27 NPT	1/4-28 ST
.750	- .001	- .002	- .0015	- .002	.62	.38	.75	.28	K-2	.50	1/8-27 NPT	1/8-27 NPT	1/8-27 NPT
.875					.69	.38	.75	.28	K-2	.50	1/8-27 NPT	1/8-27 NPT	1/8-27 NPT
1.000					.88	.50	1.00	.34	K-3	.56	1/8-27 NPT	1/8-27 NPT	1/8-27 NPT
1.250					1.00	.50	1.00	.34	K-3	.56	1/8-27 NPT	1/8-27 NPT	1/8-27 NPT

Model Number Development

Detail Standard Pin Ass'y

KPH - .750 - 4.00 - LA - 2.00 -



NOTE: All pins with lube holes are "special" items

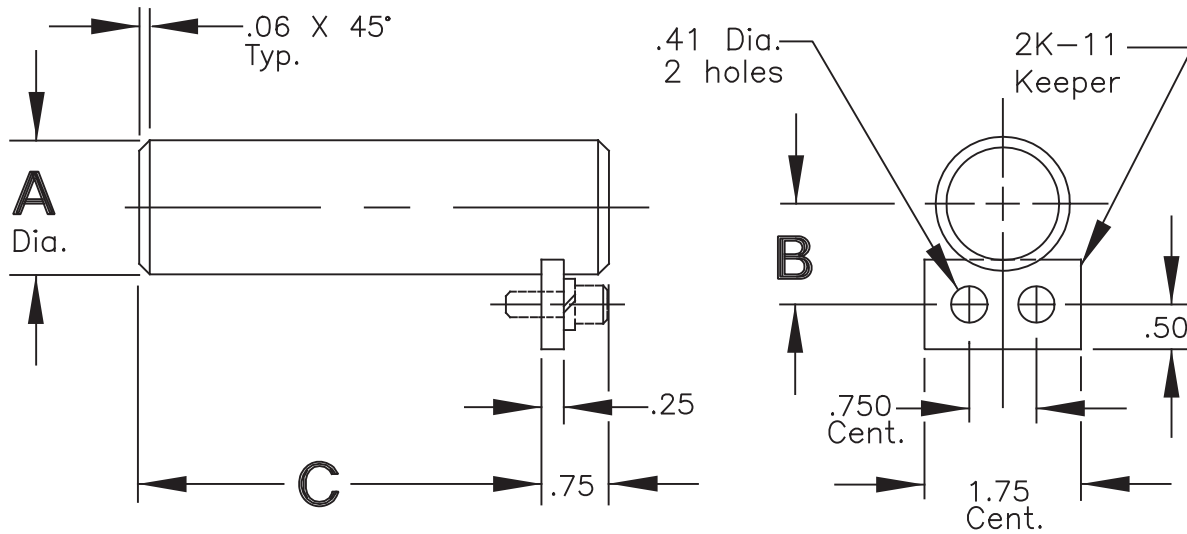
To order this product METRIC, use 'M' before the model number and millimeters for dimensions.
 Example: MKPH-20-100-LA-50

Detail Standard Co.

KEEPER PIN ASSEMBLY-HEAVY DUTY

Type KPHH, KPAH, KPTH & KPCH

SEE PAGE E-1
FOR KEEPERS



A Dia.	A Dia. Tolerance				B	CAD FILE NO.
	KPHH	KPAH	KPTH	KPCH		
1.000					.88	KPH1000
1.250					1.00	KPH1250
1.375					1.06	KPH1375
1.500					1.12	KPH1500
1.625	+ .000	+ .000	- .0005	+ .000	1.18	KPH1625
1.750	- .001	- .002	- .0035	- .004	1.25	KPH1750
2.000					1.38	KPH2000
2.250					1.50	KPH2250
2.500					1.62	KPH2500
3.000					1.88	KPH3000

Type Material & Heat Treat

KPHH 12L14 C.R.S., Carb., Hdn. & Gr., Rock. "C" 55-60, .03 Min. Case.
 KPAH Turned, Ground & Polished, Rock. "C" 28-32 Uniform Throughout.
 KPTH 1045 Turned, Ground & Polished.
 KPCH 1018 C.R.S.

Keeper included with assembly (screws not included)

Model Number Development

Detail Standard Pin Ass'y
 KPHH-1.500-12.50

Heavy Duty Keeper Pin Type _____
 "A" Diameter _____
 "C" Length _____

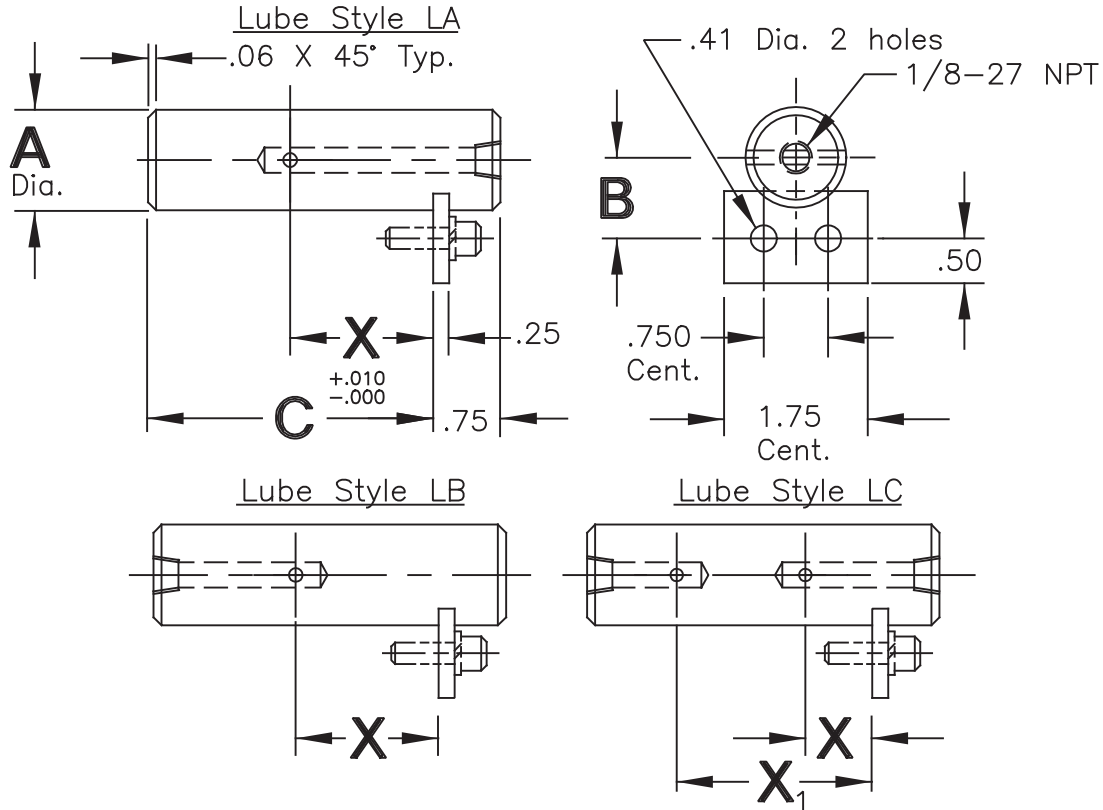
NOTE: All heavy duty pin assemblies are "special" items.

To order this product METRIC, use 'M' before the model number and millimeters for dimensions.
 Example: MKPHH-38-320

Detail Standard Co.

KEEPER PIN ASSEMBLY-HEAVY DUTY

SEE PAGE E-1
FOR KEEPERS



Type	Material & Heat Treat
KPHH	12L14 C.R.S., Carb., Hdn. & Gr., Rock "C" 55-60, .03 Min. Case.
KPAH	Turned, Ground & Polished, Rock "C" 28-32 Uniform Throughout
KPTH	1045 Turned, Ground & Polished.
KPCH	1018 C.R.S.

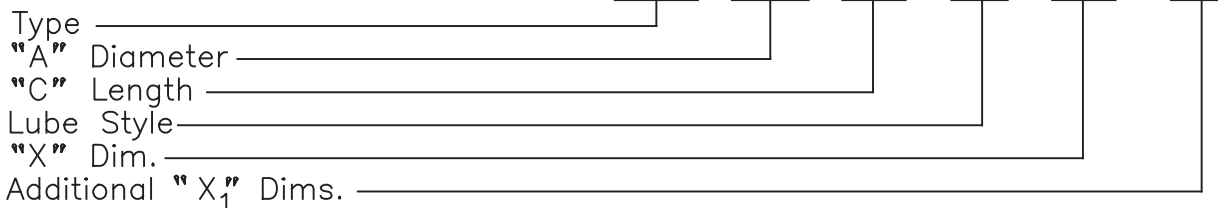
A Dia.	A Dia. Tolerance				B
	KPHH	KPAH	KPTH	KPCH	
1.000					.875
1.250					1.000
1.375	+0.000	+0.000	-0.0005	+0.000	1.063
1.500	-0.001	-0.002	-0.0035	-0.004	1.125
1.625					1.187

A Dia.	A Dia. Tolerance				B
	KPHH	KPAH	KPTH	KPCH	
1.750					1.250
2.000					1.375
2.250	+0.000	+0.000	-0.0005	+0.000	1.500
2.500	-0.001	-0.002	-0.0035	-0.004	1.625
3.000					1.875

Model Number Development

Detail Standard Pin Ass'y

KPHH-1.750-8.00-LA-4.00-



NOTE: All pins with lube holes are "special" items

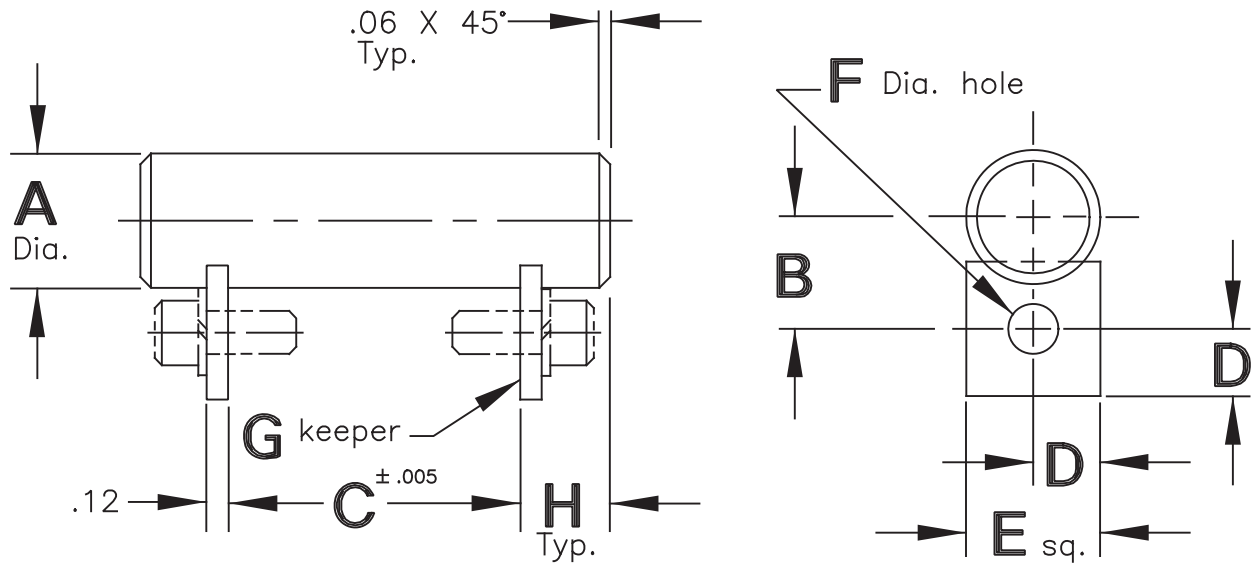
To order this product METRIC, use 'M' before the model number and millimeters for dimensions.

Example: MKPHH-44-200-LA-100

Detail Standard Co.

DOUBLE KEEPER PIN ASSEMBLY Type DKPH, DKPA, DKPT & DKPC

SEE PAGE E-1
FOR KEEPERS



A Dia.	A Dia. Tolerance				B	D	E	F	G	H	CAD FILE NO.
	DKPH	DKPA	DKPT	DKPC							
.250					.31	.25	.50	.22	K-1	.40	DKP250
.312					.34	.25	.50	.22	K-1	.40	DKP312
.375					.38	.25	.50	.22	K-1	.40	DKP375
.438					.47	.38	.75	.28	K-2	.50	DKP438
.500	+ .000	+ .000	- .0005	+ .000	.50	.38	.75	.28	K-2	.50	DKP500
.625	- .001	- .002	- .0015	- .002	.56	.38	.75	.28	K-2	.50	DKP625
.750					.62	.38	.75	.28	K-2	.50	DKP750
.875					.69	.38	.75	.28	K-2	.50	DKP875
1.000					.88	.50	1.00	.34	K-3	.56	DKP1000
1.250					1.00	.50	1.00	.34	K-3	.56	DKP1250

Type Material & Heat Treat

DKPH 12L14 C.R.S., Carb., Hdn. & Gr., Rock. "C" 55-60, .03 Min. Case.
 DKPA Turned, Ground & Polished, Rock. "C" 28-32 Uniform Throughout.
 DKPT 1045 Turned, Ground & Polished.
 DKPC 1018 C.R.S.

Keepers included with assembly (screws not included)

Model Number Development

Detail Standard Pin Ass'y
 DKPH-.500- 2.50

Keeper Pin Type _____
 "A" Diameter _____
 "C" Length _____

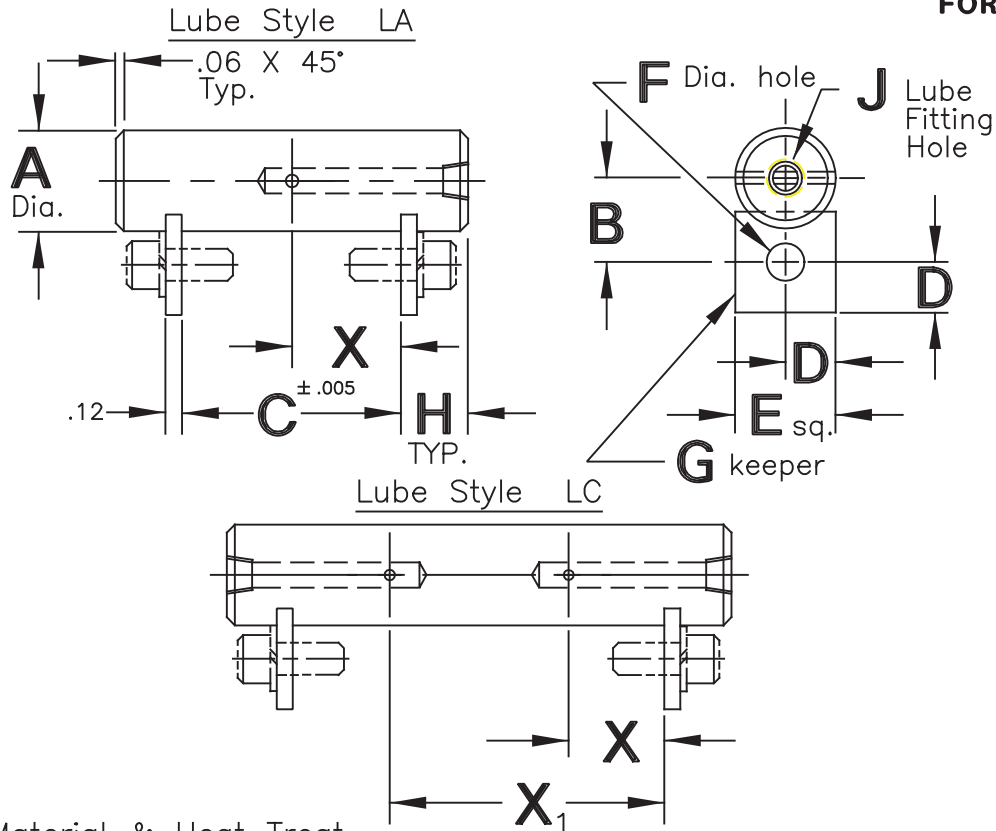
NOTE: Standard lengths for diameters .50 and under are from 1.00" to 3.00" in .25" increments, and standard lengths for diameters .62 and over are from 3.00" to 6.00" in .50" increments. Other lengths may be ordered as "special" items.

To order this product METRIC, use 'M' before the model number and millimeters for dimensions. Example: MDKPH-12-64

Detail Standard Co.

DOUBLE KEEPER PIN ASSEMBLY

SEE PAGE E-1
FOR KEEPERS



Type Material & Heat Treat

DKPH 12L14 C.R.S., Carb., Hdn. & Gr., Rock "C" 55-60, .03 Min. Case.
 DKPA Turned, Ground & Polished, Rock "C" 28-32 Uniform Throughout
 DKPT 1045 Turned, Ground & Polished.
 DKPC 1018 C.R.S.

A Dia.	A Dia. Tolerance				B	D	E	F	G	H	J		
	DKPH	DKPA	DKPT	DKPC							Style LA	Style LB	Style LC
.375					.38	.25	.50	.22	K-1	.40	5/32 Drive	1/4-28 ST	5/32 Drive
.438					.47	.38	.75	.28	K-2	.50	5/32 Drive	1/4-28 ST.	5/32 Drive
.500					.50	.38	.75	.28	K-2	.50	5/32 Drive	1/4-28 ST	5/32 Drive
.625	+ .000	+ .000	- .0005	+ .000	.56	.38	.75	.28	K-2	.50	1/4-28 ST	1/8-27 NPT	1/4-28 ST
.750	- .001	- .002	- .0015	- .002	.62	.38	.75	.28	K-2	.50	1/8-27 NPT	1/8-27 NPT	1/8-27 NPT
.875					.69	.38	.75	.28	K-2	.50	1/8-27 NPT	1/8-27 NPT	1/8-27 NPT
1.000					.88	.50	1.00	.34	K-3	.56	1/8-27 NPT	1/8-27 NPT	1/8-27 NPT
1.250					1.00	.50	1.00	.34	K-3	.56	1/8-27 NPT	1/8-27 NPT	1/8-27 NPT

Model Number Development

Detail Standard Pin Ass'y

DKPH-.750- 4.00 - LA - 2.00 -

Type _____
 "A" Diameter _____
 "C" Length _____
 Lube Style _____
 "X" Dim. _____
 Additional "X" Dims. _____

NOTE: All pins with lube holes are "special" items

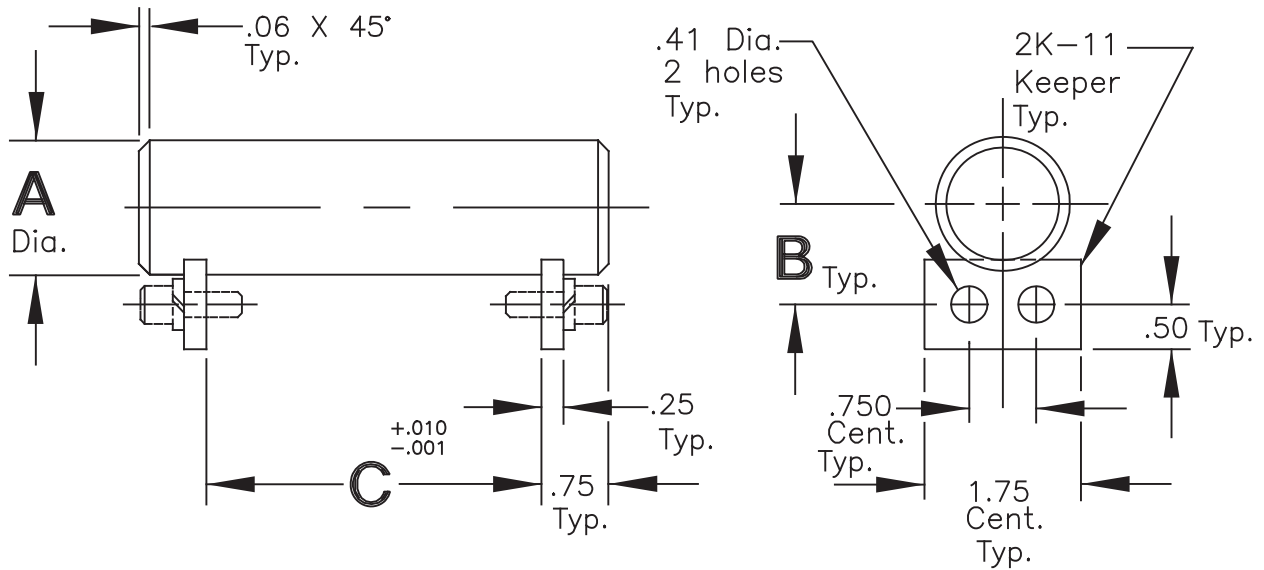
To order this product METRIC, use 'M' before the model number and millimeters for dimensions.

Example: MDKPH-20-100-LA-50

Detail Standard Co.

KEEPER PIN ASSEMBLY-HEAVY DUTY Type DKPHH, DKPAH, DKPTH & DKPCH

SEE PAGE E-1
FOR KEEPERS



A Dia.	A Dia. Tolerance				B	CAD FILE NO.
	DKPHH	DKPAH	DKPTH	DKPCH		
1.000					.88	DKPH1000
1.250					1.00	DKPH1250
1.375					1.06	DKPH1375
1.500					1.12	DKPH1500
1.625	+ .000	+ .000	- .0005	+ .000	1.18	DKPH1625
1.750	- .001	- .002	- .0035	- .004	1.25	DKPH1750
2.000					1.38	DKPH2000
2.250					1.50	DKPH2250
2.500					1.62	DKPH2500
3.000					1.88	DKPH3000

Type Material & Heat Treat

DKPHH 12L14 C.R.S., Carb., Hdn. & Gr., Rock. "C" 55-60, .03 Min. Case.
 DKPAH Turned, Ground & Polished, Rock. "C" 28-32 Uniform Throughout.
 DKPTH 1045 Turned, Ground & Polished.
 DKPCH 1018 C.R.S.

Keepers included with assembly (screws not included)

Model Number Development

Detail Standard Pin Ass'y
 DKPHH-1.500-12.50

Heavy Duty Keeper Pin Type _____

"A" Diameter _____

"C" Length _____

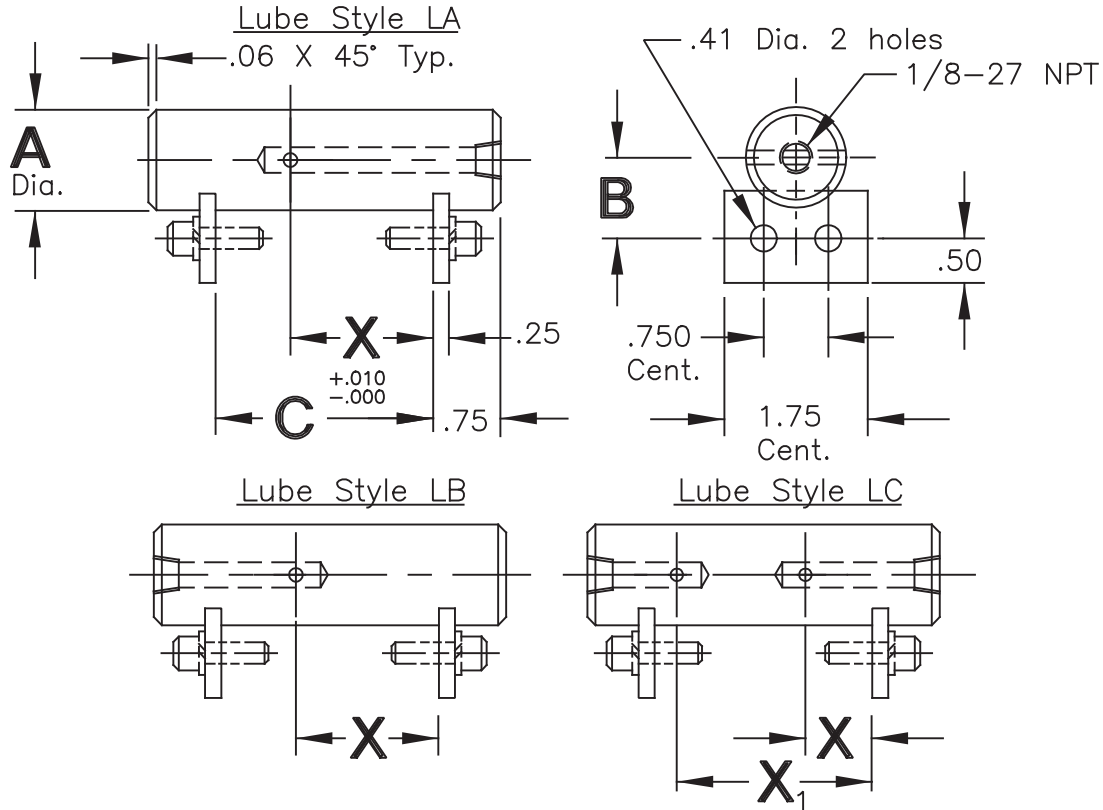
NOTE: All heavy duty pin assemblies are "special" items.

To order this product METRIC, use 'M' before the model number and millimeters for dimensions.
 Example: MDKPHH-38-320

Detail Standard Co.

KEEPER PIN ASSEMBLY-HEAVY DUTY

SEE PAGE E-1
FOR KEEPERS



Type Material & Heat Treat

DKPHH 12L14 C.R.S., Carb., Hdn. & Gr., Rock "C" 55-60, .03 Min. Case.
 DKPAH Turned, Ground & Polished, Rock "C" 28-32 Uniform Throughout
 DKPTH 1045 Turned, Ground & Polished.
 DKPCH 1018 C.R.S.

A Dia.	A Dia. Tolerance				B
	DKPHH	DKPAH	DKPTH	DKPCH	
1.000					.875
1.250					1.000
1.375	+0.000	+0.000	-.0005	+0.000	1.063
1.500	-.001	-.002	-.0035	-.004	1.125
1.625					1.187

A Dia.	A Dia. Tolerance				B
	DKPHH	DKPAH	DKPTH	DKPCH	
1.750					1.250
2.000					1.375
2.250	+0.000	+0.000	-.0005	+0.000	1.500
2.500	-.001	-.002	-.0035	-.004	1.625
3.000					1.875

Model Number Development

Detail Standard Pin Ass'y
 DKPHH-1.750-8.00-LA-4.00-

Type _____
 "A" Diameter _____
 "C" Length _____
 Lube Style _____
 "X" Dim. _____
 Additional "X" Dims. _____

NOTE: All pins with lube holes are "special" items

To order this product METRIC, use 'M' before the model number and millimeters for dimensions.

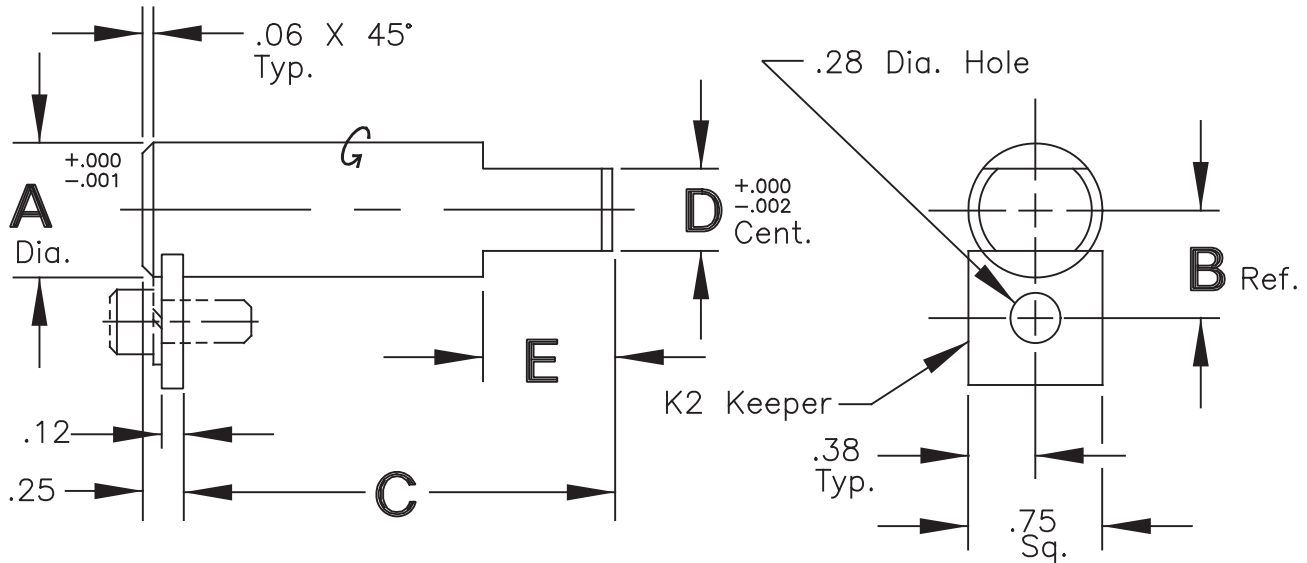
Example: MDKPHH-44-200-LA-100

Detail Standard Co.

ANTI-ROTATE PIN ASSEMBLY

Type ARH
Style AS

SEE PAGE E-1
FOR KEEPERS



A Dia.	B	D	E	CAD FILE NO.
.250	.375	.187	.25	AS250
.312	.406	.249	.31	AS312
.375	.437	.249	.38	AS375
.438	.469	.312	.38	AS438
.500	.500	.374	.38	AS500
.562	.531	.406	.50	AS562
.625	.562	.499	.50	AS625
.688	.594	.499	.50	AS688
.750	.625	.499	.50	AS750
.812	.656	.499	.62	AS812
.875	.688	.624	.62	AS875
.937	.719	.624	.75	AS937
1.000	.750	.749	.75	AS1000

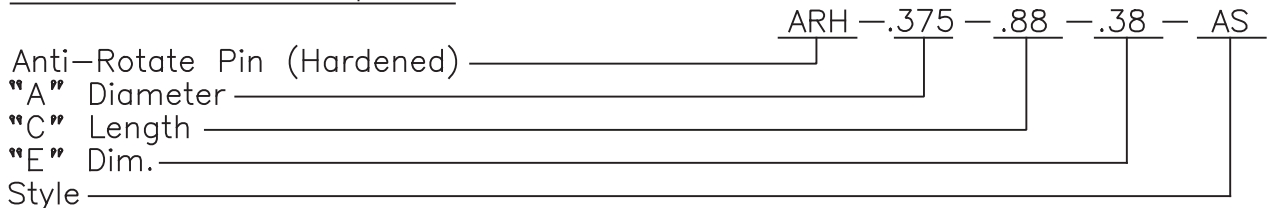
NOTE: Standard lengths for diameters .50" and under are from .50" to 1.50" in .25" increments, and standard lengths for diameters .62" and over are from 1.00" to 2.50" in .50" increments. Other lengths may be ordered as "special" items.

Material: 12L14 C.R.S.

Heat Treat: Carb., Hdn. & Gr., Rock."C" 55-60, .03 Min. Case, Core soft
Keeper included with assembly (screw not included)

Model Number Development

Detail Standard Anti-Rotate Pin Ass'y



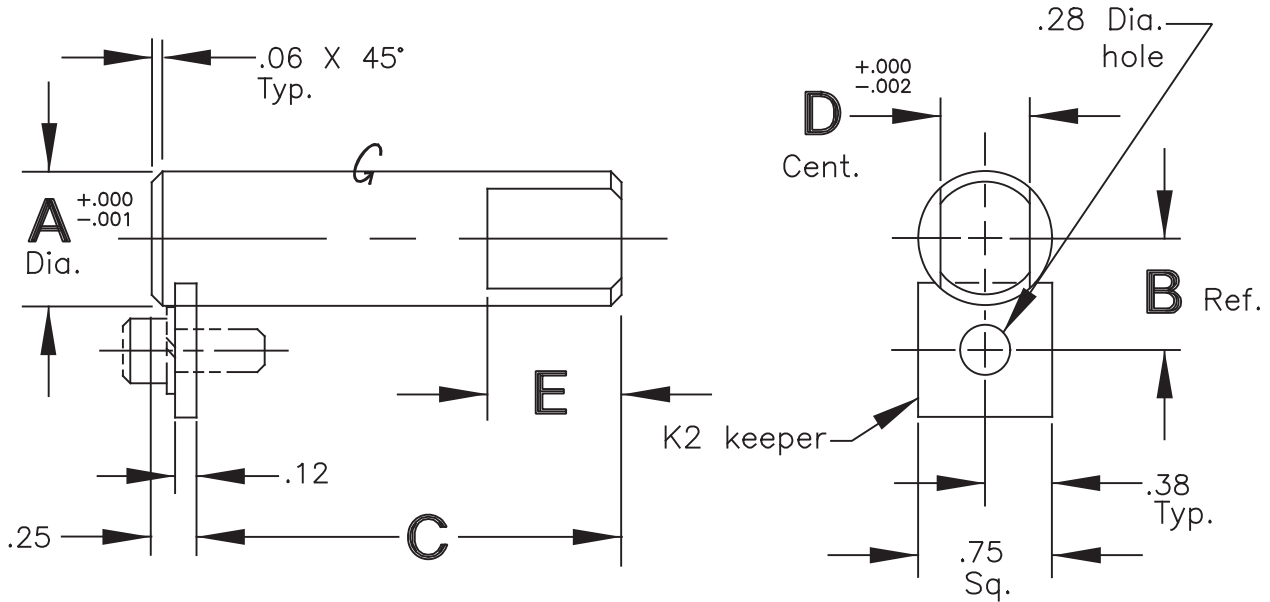
To order this product METRIC, use 'M' before the model number and millimeters for dimensions.
Example: MARH-10-22-10-AS

Detail Standard Co.

ANTI-ROTATE PIN ASSEMBLY

Type ARH
Style BS

SEE PAGE E-1
FOR KEEPERS



A Dia.	B	D	E	CAD FILE NO.
.250	.375	.187	.25	BS250
.312	.406	.249	.31	BS312
.375	.437	.249	.38	BS375
.438	.469	.312	.38	BS438
.500	.500	.374	.38	BS500
.562	.531	.406	.50	BS562
.625	.562	.499	.50	BS625
.688	.594	.499	.50	BS688
.750	.625	.499	.50	BS750
.812	.656	.499	.62	BS812
.875	.688	.624	.62	BS875
.937	.719	.624	.75	BS937
1.000	.750	.749	.75	BS1000

NOTE: Standard lengths for diameters .50" and under are from .50" to 1.50" in .25" increments, and standard lengths for diameters .62" and over are from 1.00" to 2.50" in .50" increments. Other lengths may be ordered as "special" items.

Material: 12L14 C.R.S.

Heat Treat: Carb., Hdn. & Gr., Rock."C" 55-60, .03 Min. Case, Core soft
Keeper included with assembly (screw not included)

Model Number Development

Detail Standard Anti-Rotate Pin Ass'y

ARH - .375 - .88 - .38 - BS

Anti-Rotate Pin (Hardened)

"A" Diameter

"C" Length

"E" Dim.

Style

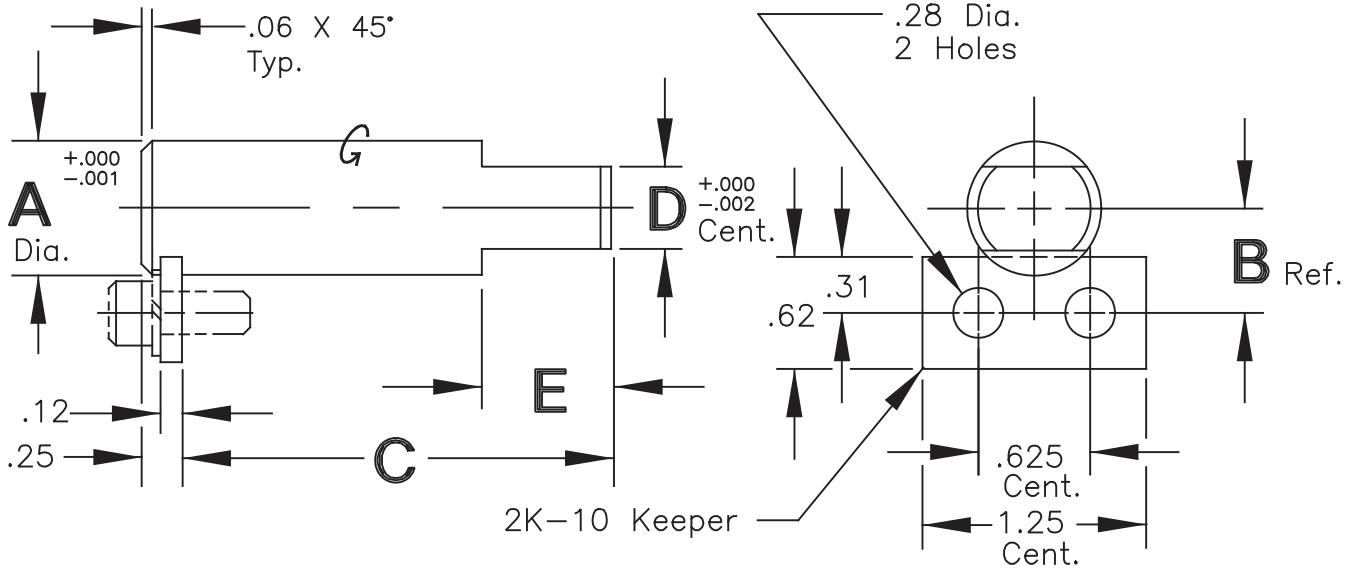
To order this product METRIC, use 'M' before the model number and millimeters for dimensions.
Example: MARH-10-22-10-BS

Detail Standard Co.

ANTI-ROTATE PIN ASSEMBLY

Type ARH
Style AD

SEE PAGE E-1
FOR KEEPERS



A Dia.	B	D	E	CAD FILE NO.
.250	.375	.187	.25	AD250
.312	.406	.249	.31	AD312
.375	.437	.249	.38	AD375
.438	.469	.312	.38	AD438
.500	.500	.374	.38	AD500
.562	.531	.406	.50	AD562
.625	.562	.499	.50	AD625
.688	.594	.499	.50	AD688
.750	.625	.499	.50	AD750
.812	.656	.499	.62	AD812
.875	.688	.624	.62	AD875
.937	.719	.624	.75	AD937
1.000	.750	.749	.75	AD1000

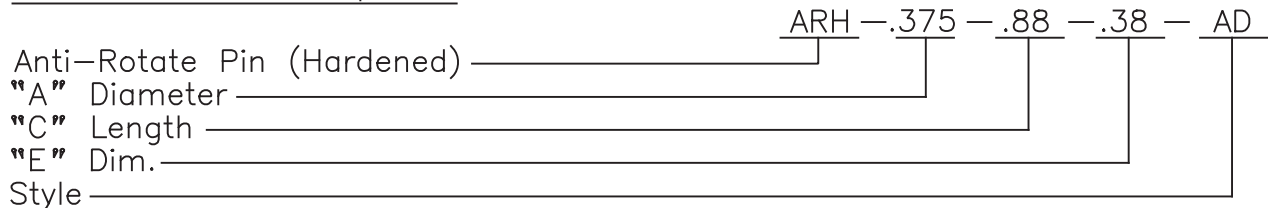
NOTE: Standard lengths for diameters .50" and under are from .50" to 1.50" in .25" increments, and standard lengths for diameters .62" and over are from 1.00" to 2.50" in .50" increments. Other lengths may be ordered as "special" items.

Material: 12L14 C.R.S.

Heat Treat: Carb., Hdn. & Gr., Rock."C" 55-60, .03 Min. Case, Core soft
Keeper included with assembly (screw not included)

Model Number Development

Detail Standard Anti-Rotate Pin Ass'y



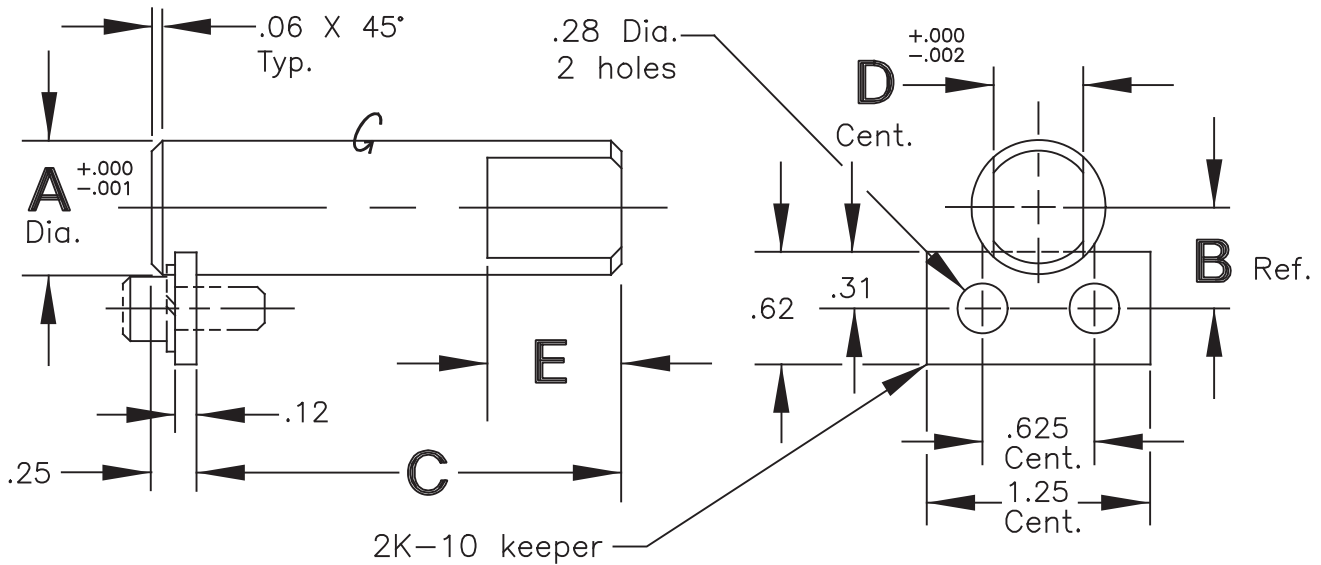
To order this product METRIC, use 'M' before the model number and millimeters for dimensions.
Example: MARH-10-22-10-AD

Detail Standard Co.

ANTI-ROTATE PIN ASSEMBLY

Type ARH
Style BD

SEE PAGE E-1
FOR KEEPERS



A Dia.	B	D	E	CAD FILE NO.
.250	.375	.187	.25	BD250
.312	.406	.249	.31	BD312
.375	.437	.249	.38	BD375
.438	.469	.312	.38	BD438
.500	.500	.374	.38	BD500
.562	.531	.406	.50	BD562
.625	.562	.499	.50	BD625
.688	.594	.499	.50	BD688
.750	.625	.499	.50	BD750
.812	.656	.499	.62	BD812
.875	.688	.624	.62	BD875
.937	.719	.624	.75	BD937
1.000	.750	.749	.75	BD1000

NOTE: Standard lengths for diameters .50" and under are from .50" to 1.50" in .25" increments, and standard lengths for diameters .62" and over are from 1.00" to 2.50" in .50" increments. Other lengths may be ordered as "special" items.

Material: 12L14 C.R.S.

Heat Treat: Carb., Hdn. & Gr., Rock."C" 55-60, .03 Min. Case, Core soft
Keeper included with assembly (screw not included)

Model Number Development

Detail Standard Anti-Rotate Pin Ass'y

ARH - .375 - .88 - .38 - BD

Anti-Rotate Pin (Hardened)

"A" Diameter

"C" Length

"E" Dim.

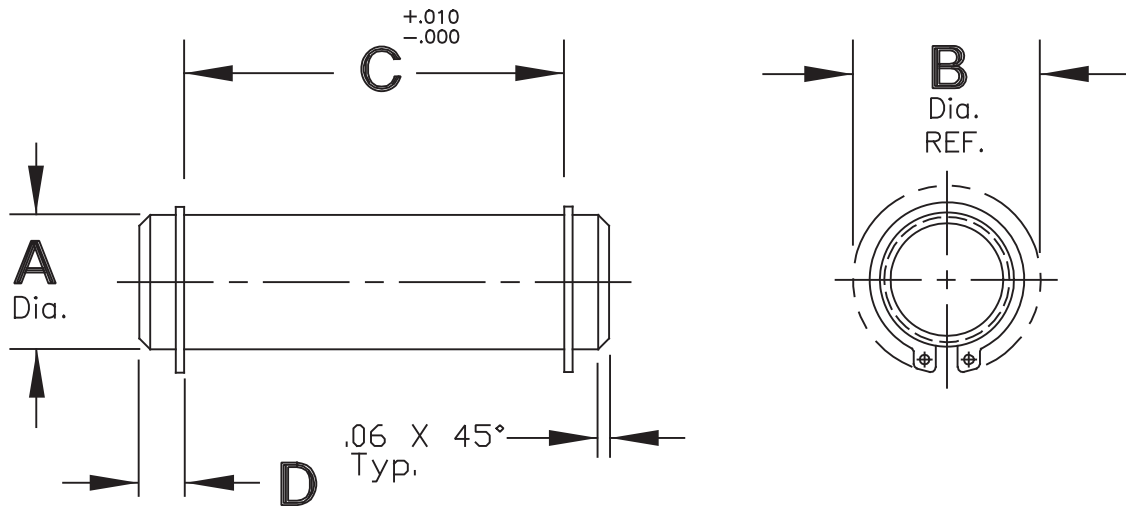
Style

To order this product METRIC, use 'M' before the model number and millimeters for dimensions.
Example: MARH-10-22-10-BD

Detail Standard Co.

DOUBLE SNAP RING PIN ASSEMBLY

Type DSPH, DSPA, DSPT & DSPC



A Dia.	A Dia. Tolerance				B	D	CAD FILE NO.
	DSPH	DSPA	DSPT	DSPC			
.250					.43	.12	DSP250
.312					.52	.16	DSP312
.375					.59	.18	DSP375
.438					.64	.18	DSP438
.500	+ .000	+ .000	- .0005	+ .000	.74	.25	DSP500
.625	- .001	- .002	- .0015	- .002	.87	.25	DSP625
.750					1.05	.25	DSP750
.875					1.16	.25	DSP875
1.000					1.35	.25	DSP1000
1.250					1.62	.31	DSP1250

Type Material & Heat Treat

DSPH 12L14 C.R.S., Carb., Hdn. & Gr., Rock. "C" 55-60, .03 Min. Case.
 DSPA Turned, Ground & Polished, Rock. "C" 28-32 Uniform Throughout.
 DSPT 1045 Turned, Ground & Polished.
 DSPC 1018 C.R.S.

Snap rings included with assembly

Model Number Development

Detail Standard Pin Ass'y
 DSPH-.500- 2.50

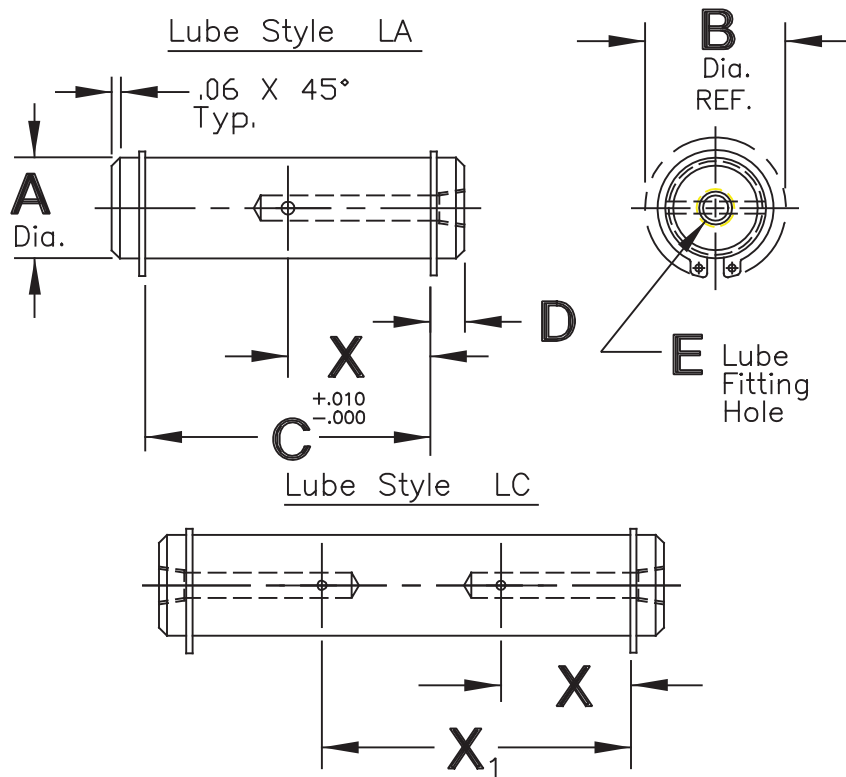
Double Snap Ring Pin _____
 "A" Diameter _____
 "C" Length _____

NOTE: Standard lengths for diameters .50 and under are from 1.00" to 3.00" in .25" increments, and standard lengths for diameters .62 and over are from 3.00" to 6.00" in .50" increments. Other lengths may be ordered as "special" items.

To order this product METRIC, use 'M' before the model number and millimeters for dimensions.
 Example: MDSPH-12-64

Detail Standard Co.

DOUBLE SNAP RING PIN ASSEMBLY



Type Material & Heat Treat

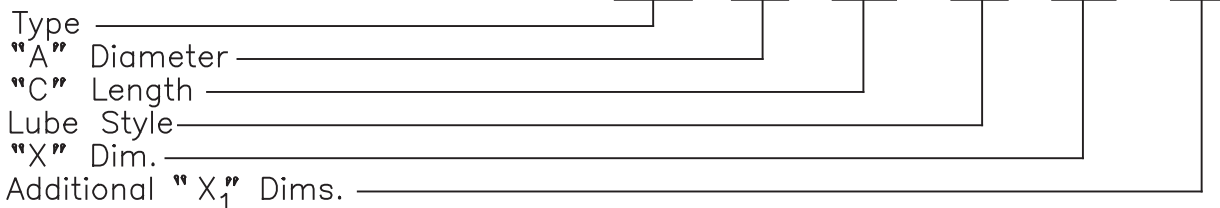
DSPH 12L14 C.R.S., Carb., Hdn. & Gr., Rock "C" 55-60, .03 Min. Case.
 DSPA Turned, Ground & Polished, Rock "C" 28-32 Uniform Throughout
 DSPT 1045 Turned, Ground & Polished.
 DSPC 1018 C.R.S.

A Dia.	A Dia. Tolerance				B	D	E
	DSPH	DSPA	DSPT	DSPC			
.375					.59	.18	1/4-28 ST
.438					.64	.18	1/4-28 ST
.500					.74	.25	1/4-28 ST
.625	+ .000	+ .000	- .0005	+ .000	.87	.25	1/8-27 NPT
.750	- .001	- .002	- .0015	- .002	1.05	.25	1/8-27 NPT
.875					1.16	.25	1/8-27 NPT
1.000					1.35	.25	1/8-27 NPT
1.250					1.62	.31	1/8-27 NPT

Model Number Development

Detail Standard Pin Ass'y

DSPH-.750- 4.00 - LA - 2.00 -



NOTE: All pins with lube holes are "special" items

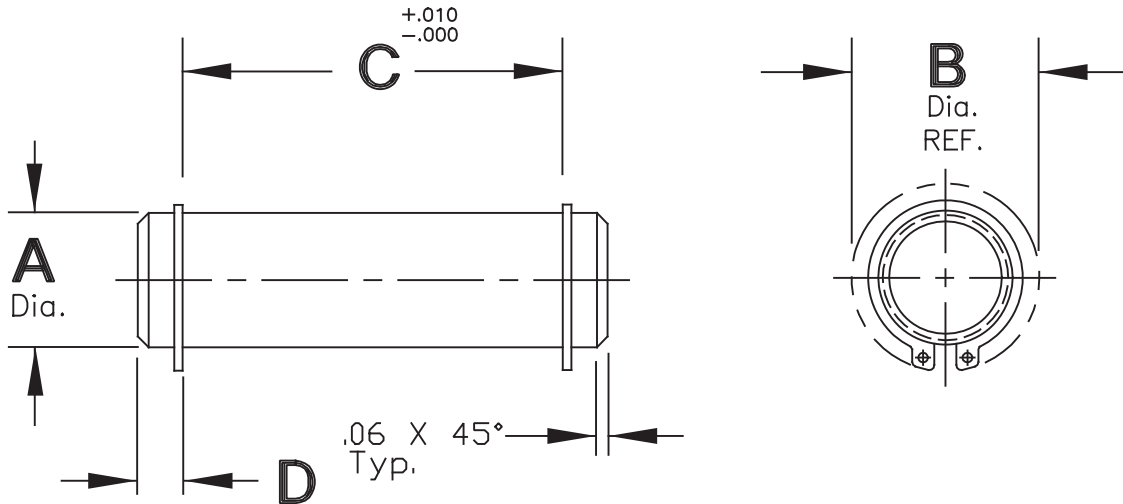
To order this product METRIC, use 'M' before the model number and millimeters for dimensions.

Example: MDSPH-20-200-LA-100

Detail Standard Co.

DOUBLE SNAP RING PIN ASSEMBLY - HEAVY DUTY

Type DSPHH, DSPTH, DSPAH & DSPCH



A Dia.	A Dia. Tolerance				B	D	CAD FILE NO.
	DSPHH	DSPAHA	DSPTH	DSPCH			
1.375					1.72	.31	DSPH1375
1.500					1.90	.31	DSPH1500
1.625	+ .000	+ .000	- .0005	+ .000	2.08	.31	DSPH1625
1.750	- .001	- .002	- .0035	- .004	2.21	.31	DSPH1750
2.000					2.44	.38	DSPH2000
2.250					2.74	.38	DSPH2250
2.500					2.98	.38	DSPH2500
3.000					3.53	.38	DSPH3000

Type Material & Heat Treat

DSPHH 12L14 C.R.S., Carb., Hdn. & Gr., Rock. "C" 55-60, .03 Min. Case.
 DSPAH Turned, Ground & Polished, Rock. "C" 28-32 Uniform Throughout.
 DSPTH 1045 Turned, Ground & Polished.
 DSPCH 1018 C.R.S.

Snap rings included with assembly

Model Number Development

Detail Standard Pin Ass'y
 DSPHH-1.500-10.00

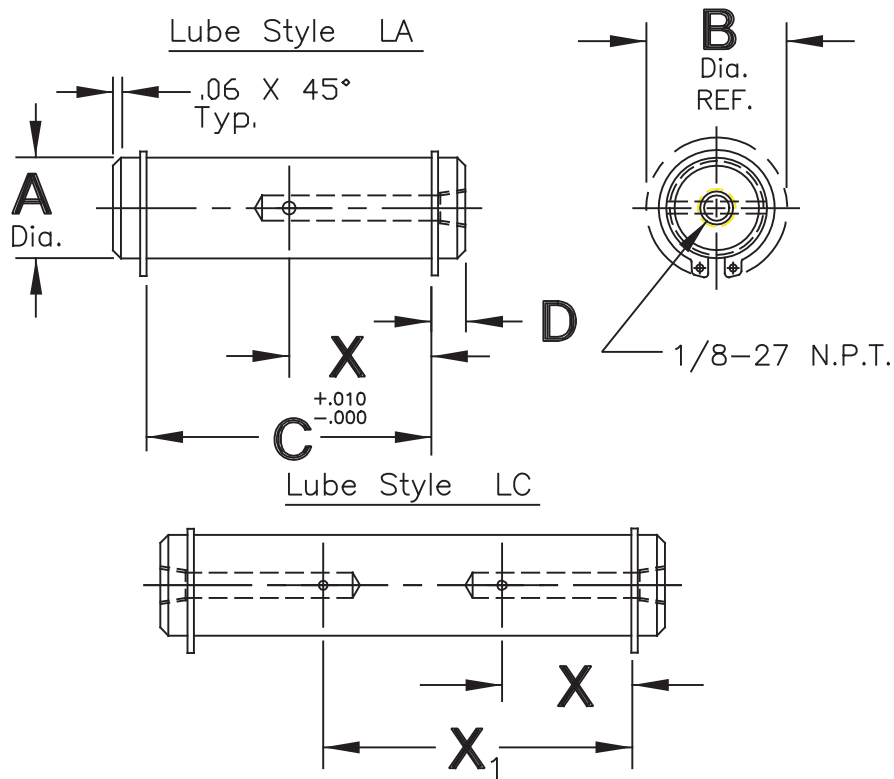
Heavy Duty Double Snap Ring Pin _____
 "A" Diameter _____
 "C" Length _____

NOTE: All heavy duty pin assemblies are "special" items.

To order this product METRIC, use 'M' before the model number and millimeters for dimensions.
 Example: MDSPHH-38-250

Detail Standard Co.

DOUBLE SNAP RING PIN ASSEMBLY - HEAVY DUTY



Type Material & Heat Treat

DSPHH 12L14 C.R.S., Carb., Hdn. & Gr., Rock "C" 55-60, .03 Min. Case.
 DSPAH Turned, Ground & Polished, Rock "C" 28-32 Uniform Throughout
 DSPTH 1045 Turned, Ground & Polished.
 DSPCH 1018 C.R.S.

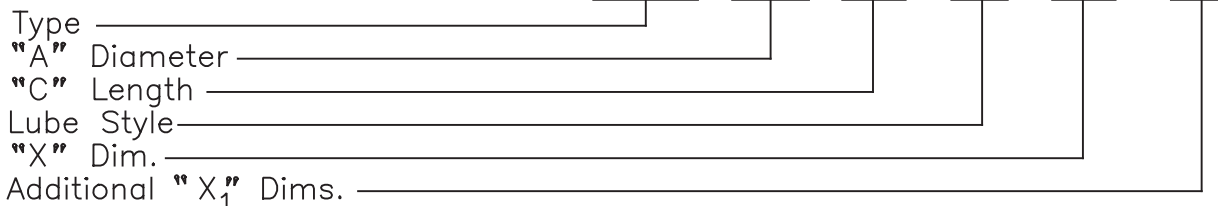
A Dia.	A Dia. Tolerance				B	D
	DSPHH	DSPAH	DSPTH	DSPCH		
1.375					1.72	.31
1.500	+ .000	+ .000	- .0005	+ .000	1.90	.31
1.625	- .001	- .002	- .0035	- .004	2.08	.31
1.750					2.21	.31

A Dia.	A Dia. Tolerance				B	D
	DSPHH	DSPAH	DSPTH	DSPCH		
2.000					2.44	.38
2.250	+ .000	+ .000	- .0005	+ .000	2.74	.38
2.500	- .001	- .002	- .0035	- .004	2.98	.38
3.000					3.53	.38

Model Number Development

Detail Standard Pin Ass'y

DSPHH-1.750-8.00-LA-4.00-



NOTE: All pins with lube holes are "special" items

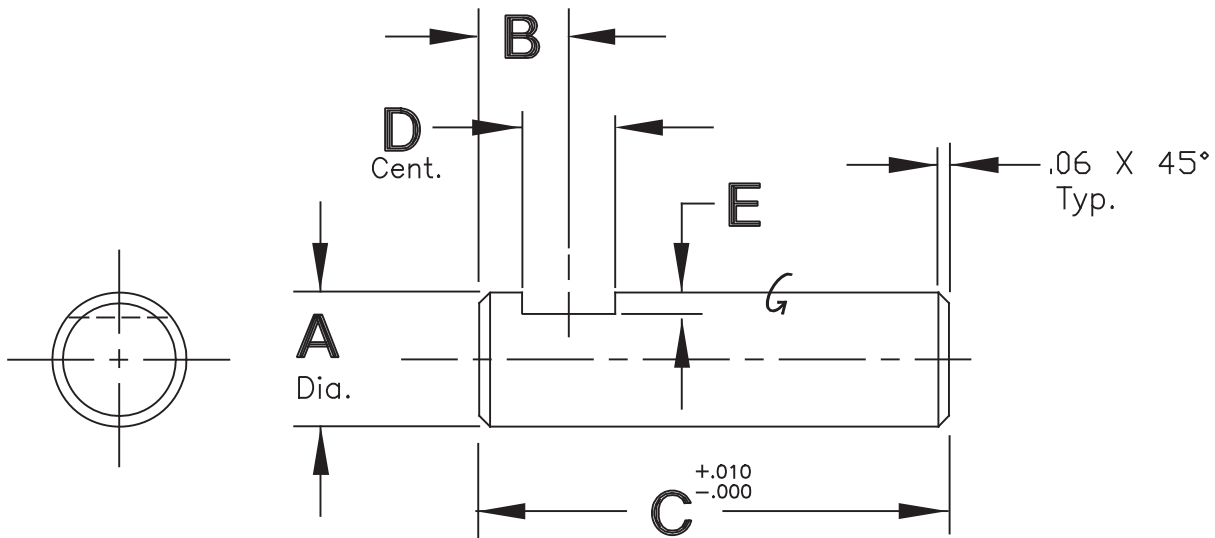
To order this product METRIC, use 'M' before the model number and millimeters for dimensions.

Example: MDSPHH-44-200-LA-100

Detail Standard Co.

SINGLE FLAT PIN

Type SFH, SFT, SFA & SFC



A Dia.	A Dia. Tolerance				B	D	E	CAD FILE NO.
	SFH	SFA	SFT	SFC				
.250					.25	.28	.06	SF250
.312					.25	.28	.06	SF312
.375					.31	.40	.06	SF375
.438					.31	.40	.06	SF438
.500	+ .000	+ .000	- .0005	+ .000	.44	.40	.09	SF500
.625	- .001	- .002	- .0015	- .002	.44	.40	.09	SF625
.750					.50	.53	.12	SF750
.875					.50	.53	.12	SF875
1.000					.50	.53	.12	SF1000
1.250					.50	.53	.12	SF1250

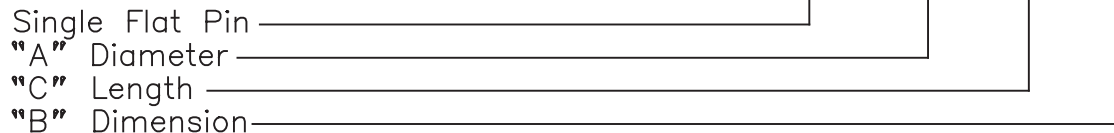
Type

Material & Heat Treat

SFH 12L14 C.R.S., Carb., Hdn. & Gr., Rock. "C" 55-60, .03 Min. Case.
 SFA Turned, Ground & Polished, Rock. "C" 28-32 Uniform Throughout.
 SFT 1045 Turned, Ground & Polished.
 SFC 1018 C.R.S.

Model Number Development

Detail Standard Pin Ass'y
 SFH - .500 - 2.50 - .62

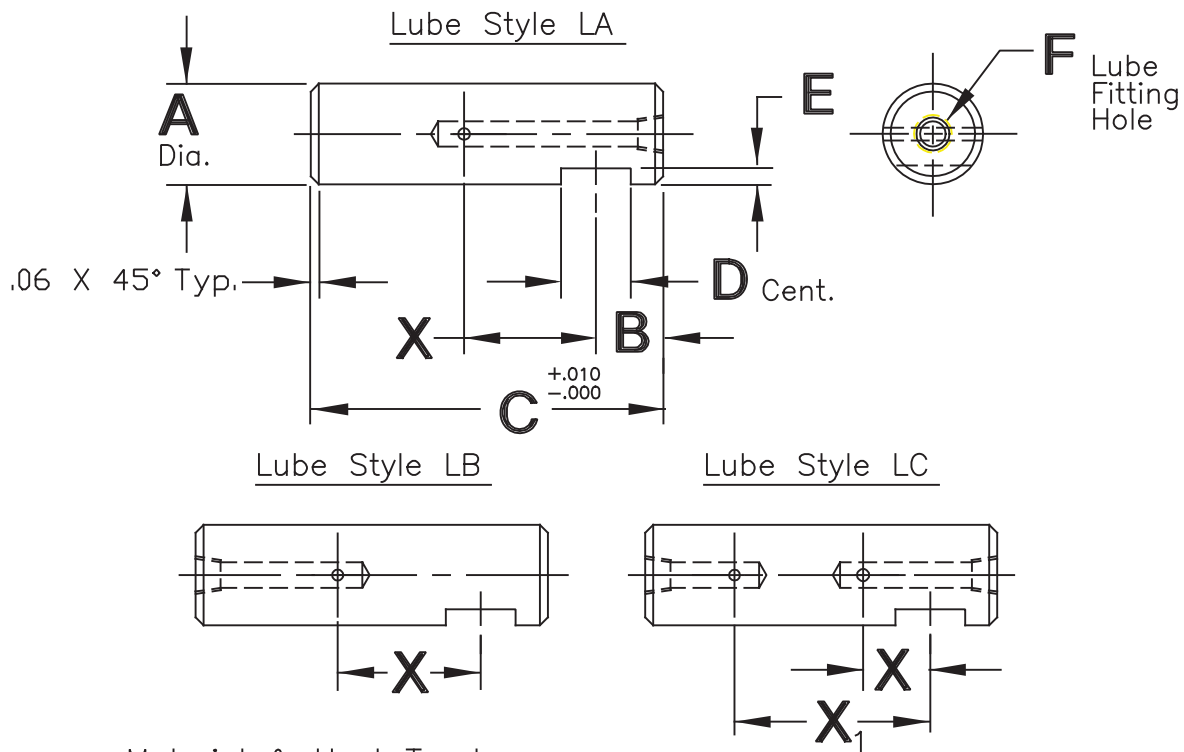


NOTE: Standard lengths for diameters .50 and under are from 1.00" to 3.00" in .25" increments, and standard lengths for diameters .62 and over are from 3.00" to 6.00" in .50" increments. Other lengths may be ordered as "special" items.

To order this product METRIC, use 'M' before the model number and millimeters for dimensions.
 Example: MSFH-12-64-18

Detail Standard Co.

SINGLE FLAT PIN



Type

Material & Heat Treat

SFH 12L14 C.R.S., Carb., Hdn. & Gr., Rock "C" 55-60, .03 Min. Case.
 SFA Turned, Ground & Polished, Rock "C" 28-32 Uniform Throughout
 SFT 1045 Turned, Ground & Polished.
 SFC 1018 C.R.S.

A Dia.	A Dia. Tolerance				B	D	E	F		
	SFH	SFA	SFT	SFC				Style LA	Style LB	Style LC
.375					.31	.40	.06	5/32 Drive	1/4-28 ST	5/32 Drive
.438					.31	.40	.06	5/32 Drive	1/4-28 ST.	5/32 Drive
.500					.44	.40	.09	5/32 Drive	1/4-28 ST	5/32 Drive
.625	+ .000	+ .000	- .0005	+ .000	.44	.40	.09	1/4-28 ST	1/8-27 NPT	1/4-28 ST
.750	- .001	- .002	- .0015	- .002	.50	.53	.12	1/8-27 NPT	1/8-27 NPT	1/8-27 NPT
.875					.50	.53	.12	1/8-27 NPT	1/8-27 NPT	1/8-27 NPT
1.000					.50	.53	.12	1/8-27 NPT	1/8-27 NPT	1/8-27 NPT
1.250					.50	.53	.12	1/8-27 NPT	1/8-27 NPT	1/8-27 NPT

Model Number Development

Detail Standard Pin Ass'y

SFH -.750- 4.00-.50- LA - 2.00 -

Type _____

"A" Diameter _____

"C" Length _____

"B" Dimension _____

Lube Style _____

"X" Dim. _____

Additional "X₁" Dims. _____

NOTE: All pins with lube holes are "special" items

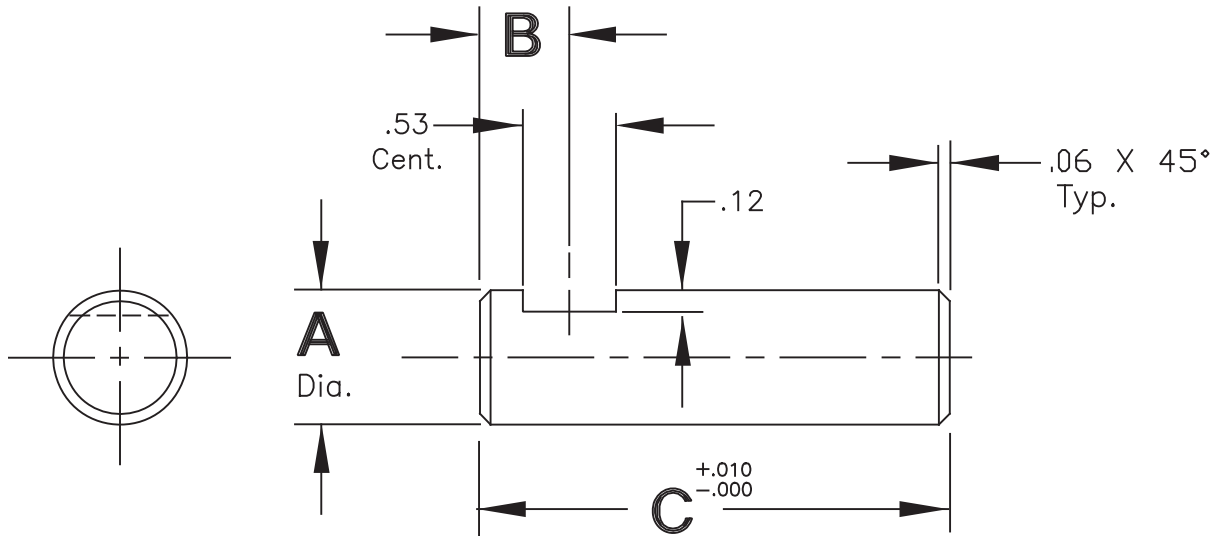
To order this product METRIC, use 'M' before the model number and millimeters for dimensions.

Example: MSFH-20-100-12-LA-50

Detail Standard Co.

SINGLE FLAT PIN - HEAVY DUTY

Type SFHH, SFTH, SFAH & SFCH



A Dia.	A Dia. Tolerance				CAD FILE NO.
	SFHH	SFAH	SFTH	SFCH	
1.375					SFHH1375
1.500					SFHH1500
1.625					SFHH1625
1.750	+0.000	+0.000	-.0005	+0.000	SFHH1750
2.000	-.001	-.002	-.0035	-.004	SFHH2000
2.250					SFHH2250
2.500					SFHH2500
3.000					SFHH3000

Type Material & Heat Treat

SFHH 12L14 C.R.S., Carb., Hdn. & Gr., Rock. "C" 55-60, .03 Min. Case.
 SFAH Turned, Ground & Polished, Rock. "C" 28-32 Uniform Throughout.
 SFTH 1045 Turned, Ground & Polished.
 SFCH 1018 C.R.S.

Model Number Development

Detail Standard Pin Ass'y
 SFHH-1.500-10.00-.62

Single Flat Pin Type _____
 "A" Diameter _____
 "C" Length _____
 "B" Dimension _____

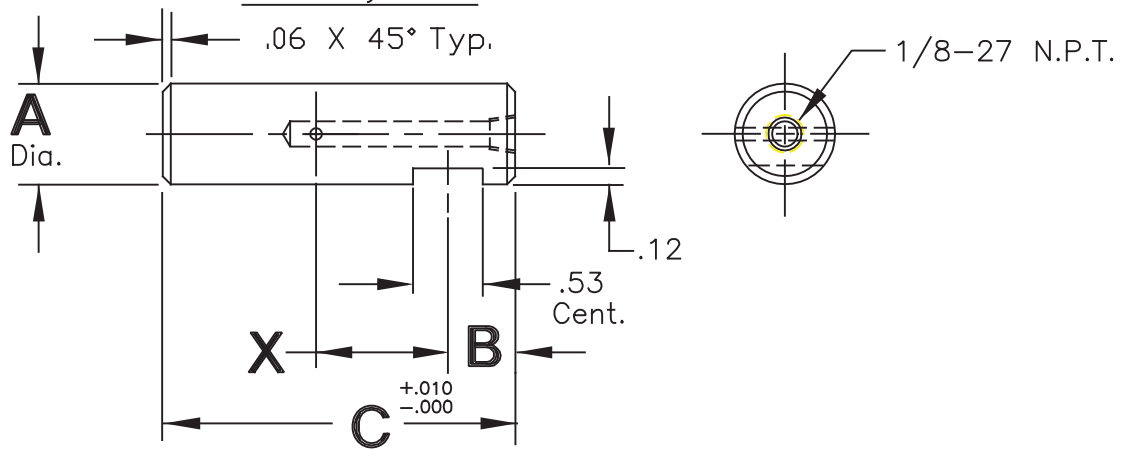
NOTE: All heavy duty pin assemblies are "special" items.

To order this product METRIC, use 'M' before the model number and millimeters for dimensions.
 Example: MSFHH-38-250-18

Detail Standard Co.

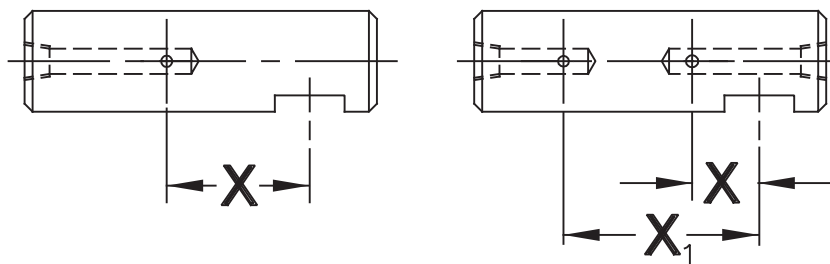
SINGLE FLAT PIN - HEAVY DUTY

Lube Style LA



Lube Style LB

Lube Style LC



Type Material & Heat Treat

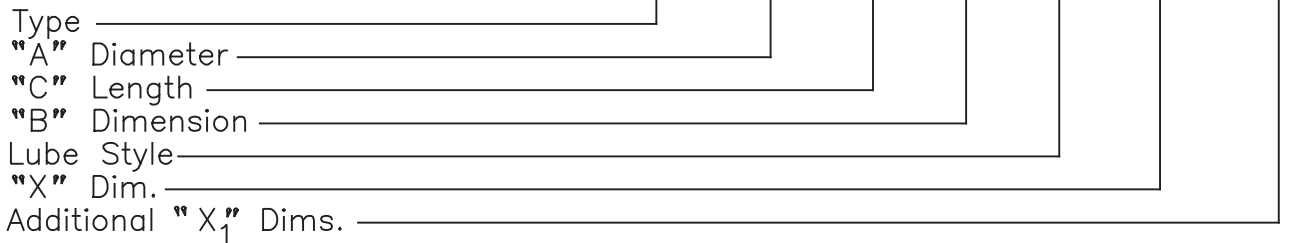
SFHH 12L14 C.R.S., Carb., Hdn. & Gr., Rock "C" 55-60, .03 Min. Case.
 SFAH Turned, Ground & Polished, Rock "C" 28-32 Uniform Throughout
 SFTH 1045 Turned, Ground & Polished.
 SFCH 1018 C.R.S.

A Dia.	A Dia. Tolerance				A Dia.	A Dia. Tolerance			
	SFHH	SFAH	SFTH	SFCH		SFHH	SFAH	SFTH	SFCH
1.375					2.000				
1.500	+ .000	+ .000	- .0005	+ .000	2.250	+ .000	+ .000	- .0005	+ .000
1.625	- .001	- .002	- .0035	- .004	2.500	- .001	- .002	- .0035	- .004
1.750					3.000				

Model Number Development

Detail Standard Pin Ass'y

SFHH-1.750-8.00-.75-LA-4.00-



NOTE: All pins with lube holes are "special" items

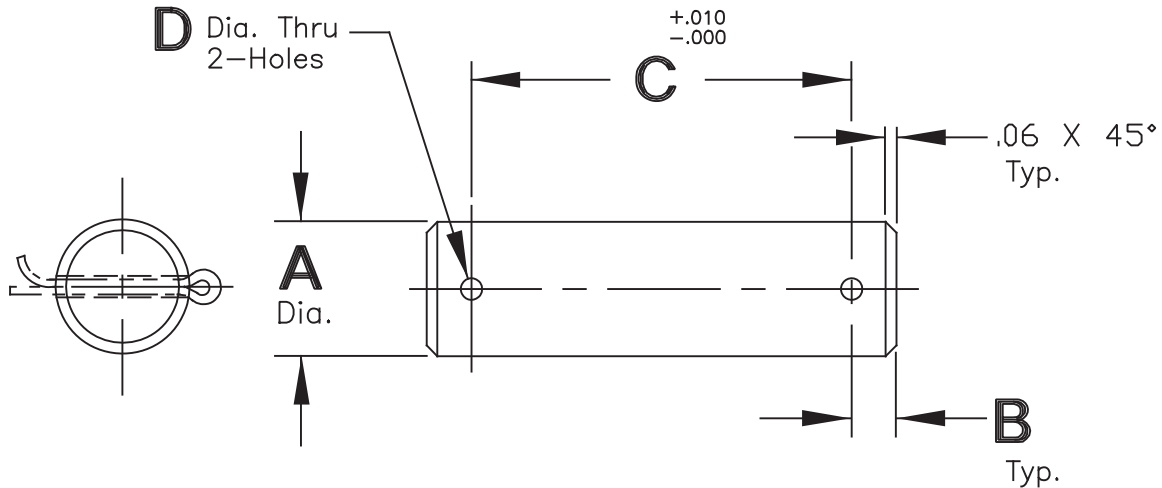
To order this product METRIC, use 'M' before the model number and millimeters for dimensions.

Example: MSFHH-44-200-20-LA-100

Detail Standard Co.

COTTER PIN SHAFT ASSEMBLY

Type CPH, CPT, CPA & CPC



A Dia.	A Dia. Tolerance				B	D	CAD FILE NO.
	CPH	CPA	CPT	CPC			
.250					.18	.09	CP250
.312					.18	.12	CP312
.375					.18	.12	CP375
.438					.25	.12	CP438
.500	+ .000	+ .000	- .0005	+ .000	.25	.12	CP500
.625	- .001	- .002	- .0015	- .002	.25	.12	CP625
.750					.25	.12	CP750
.875					.25	.12	CP875
1.000					.38	.12	CP1000
1.250					.38	.18	CP1250

Type Material & Heat Treat

CPH 12L14 C.R.S., Carb., Hdn. & Gr., Rock. "C" 55-60, .03 Min. Case.
 CPA Turned, Ground & Polished, Rock. "C" 28-32 Uniform Throughout.
 CPT 1045 Turned, Ground & Polished.
 CPC 1018 C.R.S.

Cotter pins included with assembly.

Model Number Development

Detail Standard Pin Ass'y
 CPH - .500 - 2.50

Cotter Pin Type _____
 "A" Diameter _____
 "C" Length _____

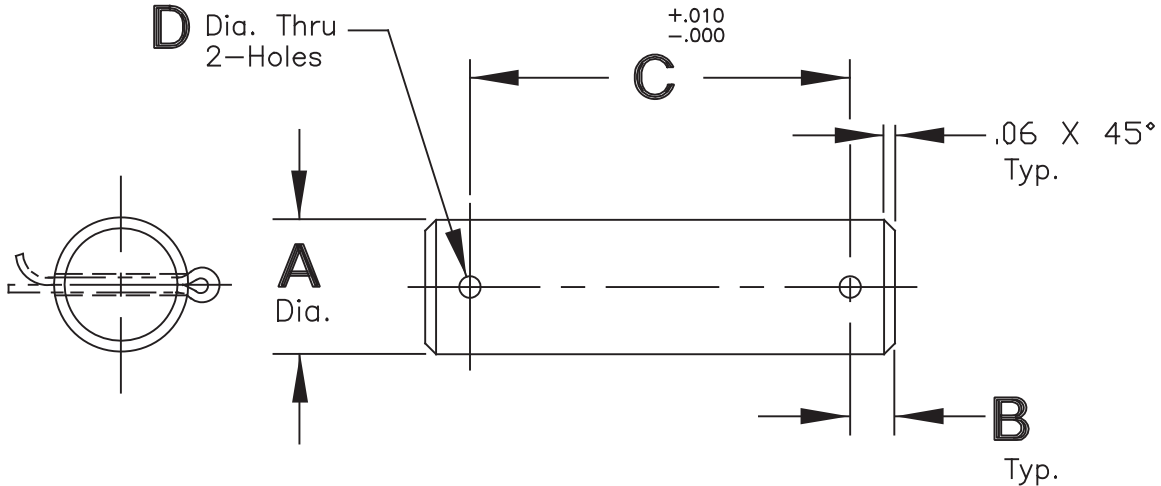
NOTE: Standard lengths for diameters .50 and under are from 1.00" to 3.00" in .25" increments, and standard lengths for diameters .62 and over are from 3.00" to 6.00" in .50" increments. Other lengths may be ordered as "special" items.

To order this product METRIC, use 'M' before the model number and millimeters for dimensions.
 Example: MCPH-12-64

Detail Standard Co.

COTTER PIN SHAFT ASSEMBLY-HEAVY DUTY

Type CPHH, CPTH, CPAH & CPCH



A Dia.	A Dia. Tolerance				B	D	CAD FILE NO.
	CPHH	CPAH	CPTH	CPCH			
1.375					.38	.18	CPHH1375
1.500					.38	.18	CPHH1500
1.625					.38	.18	CPHH1625
1.750	+.000	+.000	-.0005	+.000	.38	.18	CPHH1750
2.000	-.001	-.002	-.0035	-.004	.50	.25	CPHH2000
2.250					.50	.25	CPHH2250
2.500					.50	.25	CPHH2500
3.000					.50	.25	CPHH3000

Type Material & Heat Treat

CPHH 12L14 C.R.S., Carb., Hdn. & Gr., Rock. "C" 55-60, .03 Min. Case.
 CPAH Turned, Ground & Polished, Rock. "C" 28-32 Uniform Throughout.
 CPTH 1045 Turned, Ground & Polished.
 CPCH 1018 C.R.S.

Cotter pins included with assembly.

Model Number Development

Detail Standard Pin Ass'y
 CPHH-1.500-10.00

Cotter Pin Type _____
 "A" Diameter _____
 "C" Length _____

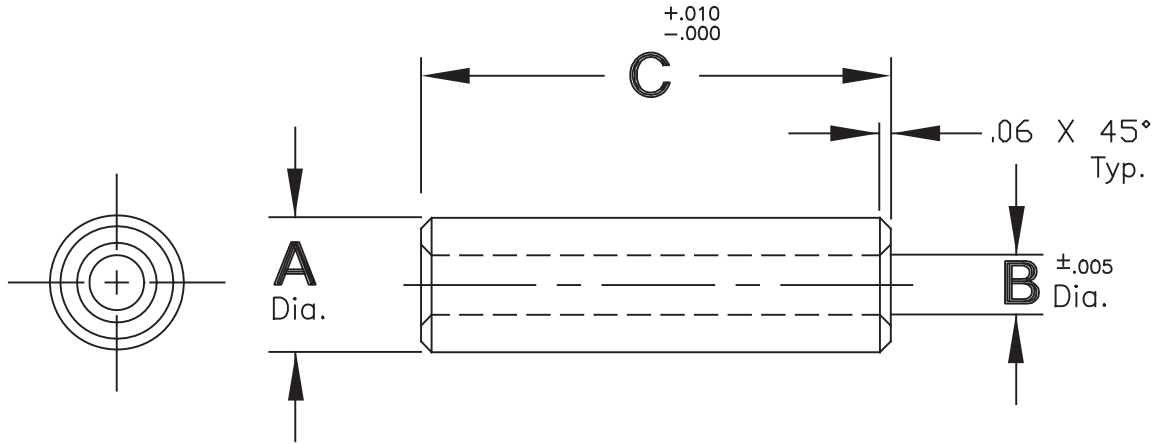
NOTE: All heavy duty pins assemblies are "special" items.

To order this product METRIC, use 'M' before the model number and millimeters for dimensions.
 Example: MCPHH-38-250

Detail Standard Co.

HOLLOW PIN

Type HPH, HPT, HPA & HPC



A Dia.	A Dia. Tolerance				B Dia.	CAD FILE NO.
	HPH	HPA	HPT	HPC		
.438					.280	HP438
.500					.280	HP500
.625					.280	HP625
.750	+0.000	+0.000	-0.0005	+0.000	.406	HP750
.875	-0.001	-0.002	-0.0015	-0.002	.406	HP875
1.000					.530	HP1000
1.250					.688	HP1250

Type Material & Heat Treat

HPH 12L14 C.R.S., Carb., Hdn. & Gr., Rock. "C" 55-60, .03 Min. Case.
 HPA Turned, Ground & Polished, Rock. "C" 28-32 Uniform Throughout.
 HPT 1045 Turned, Ground & Polished.
 HPC 1018 C.R.S.

Model Number Development

Detail Standard Pin Ass'y

HPH-.750-.403-2.50

Hollow Pin Type _____
 "A" Diameter _____
 "B" Diameter _____
 "C" Length _____

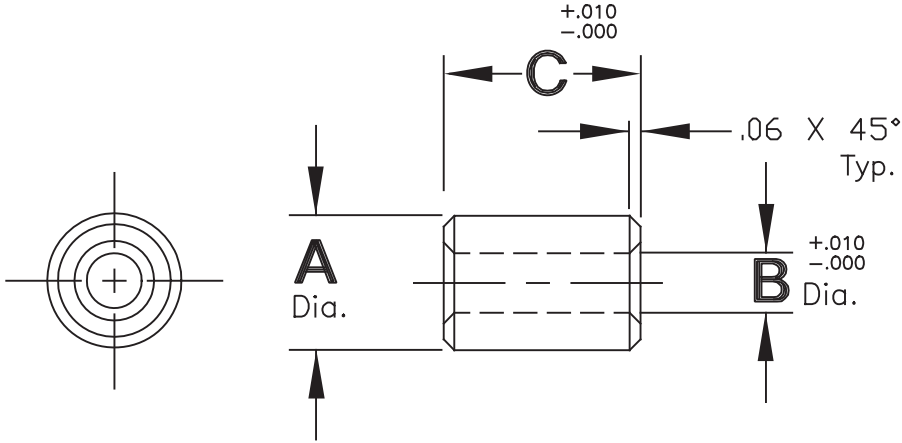
NOTE: Standard lengths for 'A' diameters .50 and under are from 1.00" to 3.00" in .25" increments, and standard lengths for 'A' diameters .62 and over are from 3.00" to 6.00" in .50" increments. Other lengths may be ordered as "special" items.

To order this product METRIC, use 'M' before the model number and millimeters for dimensions.
 Example: MHPH-20-10-64

Detail Standard Co.

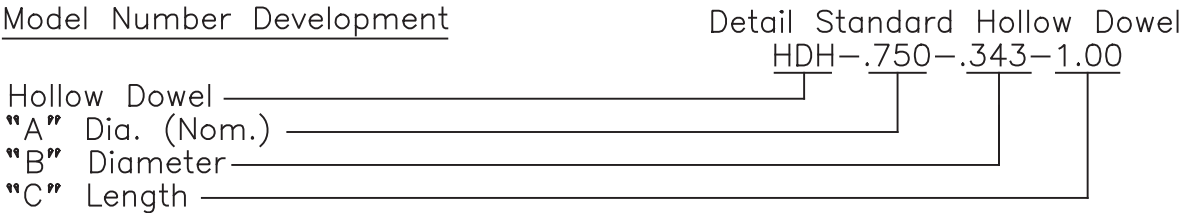
HOLLOW DOWEL

Type HDH



A Dia. (nom.)	A Dia. (actual)	B Dia.	CAD FILE NO.
.44	.4378 / .4376	.218	HD438
.50	.5003 / .5001	.280	HD500
.56	.5628 / .5626	.280	HD562
.62	.6253 / .6251	.280	HD625
.75	.7503 / .7501	.343	HD750
.88	.8753 / .8751	.406	HD875
1.00	1.0003 / 1.0001	.406	HD1000

Type HDH Material & Heat Treat Drill Rod., Carb., Hdn. & Gr., Rock. "C" 55-60, .02 Min. Case.



NOTE: Standard lengths for all 'A' diameters is 1.5 x 'A' dia.
 Other lengths may be ordered as "special" items.

To order this product METRIC, use 'M' before the model number and millimeters for dimensions.
 Example: MHDH-20-10-25