

Detail Standard Co.

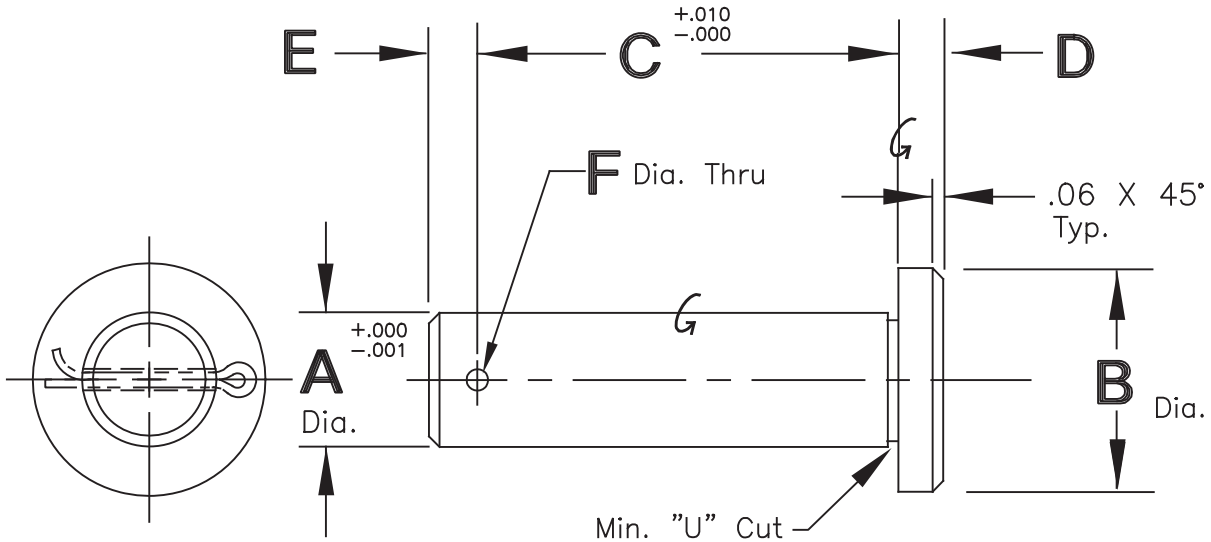
SECTION C

HEAD TYPE SHAFTS

Detail Standard Co.

HEAD PIN WITH COTTER PIN

Type HCPH, HCPA & HCPC



A Dia.	B Dia.	D	E	F	CAD FILE NO.
.250	.50	.12	.18	.09	HCP250
.312	.56	.12	.18	.12	HCP312
.375	.62	.18	.18	.12	HCP375
.438	.88	.18	.25	.12	HCP438
.500	1.00	.25	.25	.12	HCP500
.625	1.12	.25	.25	.12	HCP625
.750	1.25	.25	.25	.12	HCP750
.875	1.38	.31	.25	.12	HCP875
1.000	1.50	.31	.38	.12	HCP1000
1.250	1.88	.38	.38	.18	HCP1250

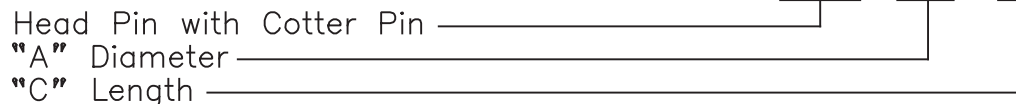
Type Material & Heat Treat

HCPH 12L14 C.R.S., Carb., Hdn. & Gr., Rock. "C" 55-60, .03 Min. Case.
 HCPA Pre-heat treated Alloy, Rock. "C" 28-32 Uniform Throughout.
 HCPC 1018 C.R.S.

Cotter pin included with assembly.

Model Number Development

Detail Standard Pin Ass'y
 HCPH-.500- 2.50

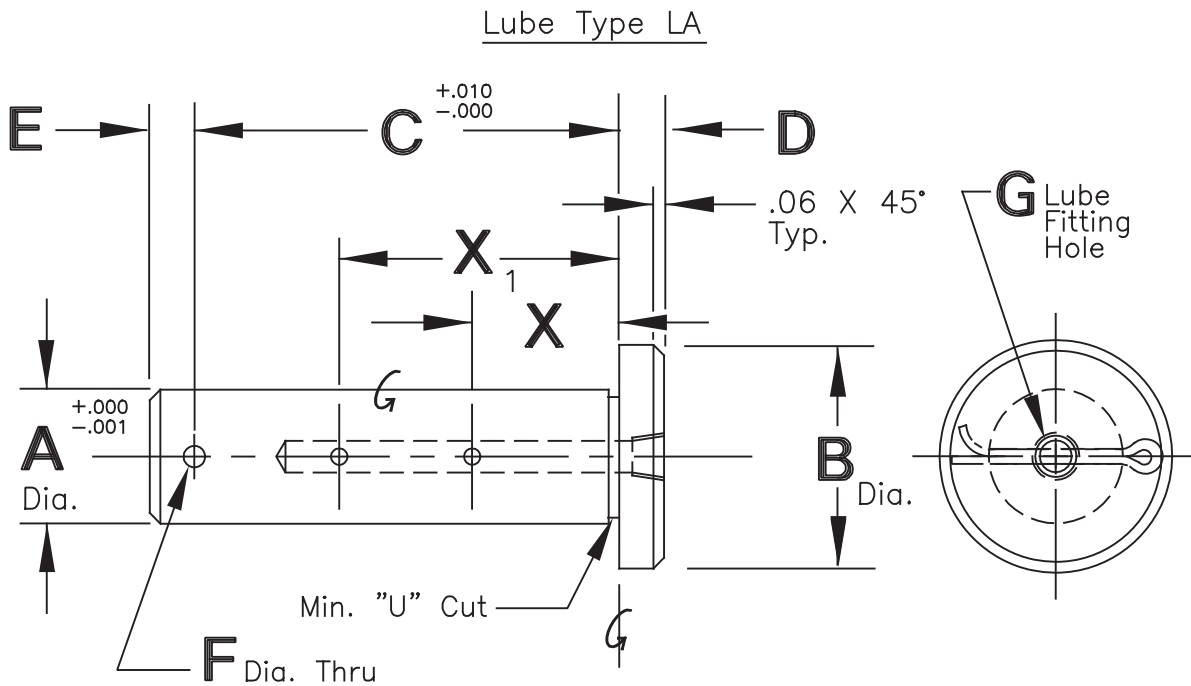


NOTE: Standard lengths for diameters .50 and under are from 1.00" to 3.00" in .25" increments, and standard lengths for diameters .62 and over are from 3.00" to 6.00" in .50" increments. Other lengths may be ordered as "special" items.

To order this product METRIC, use 'M' before the model number and millimeters for dimensions. Example: MHCPH-12-64

Detail Standard Co.

HEAD PIN WITH COTTER PIN



Type Material & Heat Treat

HCPH	12L14 C.R.S., Carb., Hdn. & Gr., Rock "C" 55-60, .03 Min. Case.
HCPA	Pre-heat treated Alloy, Rock "C" 28-32 Uniform Throughout.
HCPC	1018 C.R.S.

Cotter pin included with assembly.

A Dia.	B Dia.	D	E	F	G
.375	.62	.18	.18	.12	5/32 Drive
.438	.88	.18	.25	.12	5/32 Drive
.500	1.00	.25	.25	.12	1/4-28 ST
.625	1.12	.25	.25	.12	1/8-27 NPT
.750	1.25	.25	.25	.12	1/8-27 NPT
.875	1.38	.31	.25	.12	1/8-27 NPT
1.000	1.50	.31	.38	.12	1/8-27 NPT
1.250	1.88	.38	.38	.18	1/8-27 NPT

Model Number Development

Detail Standard Pin Ass'y

HCPH - .750 - 4.00 - LA - 2.00 -

Type _____
 "A" Diameter _____
 "C" Length _____
 Lube Style _____
 "X" Dim. _____
 Additional "X₁" Dims. _____

NOTE: All pins with lube holes are "special" items

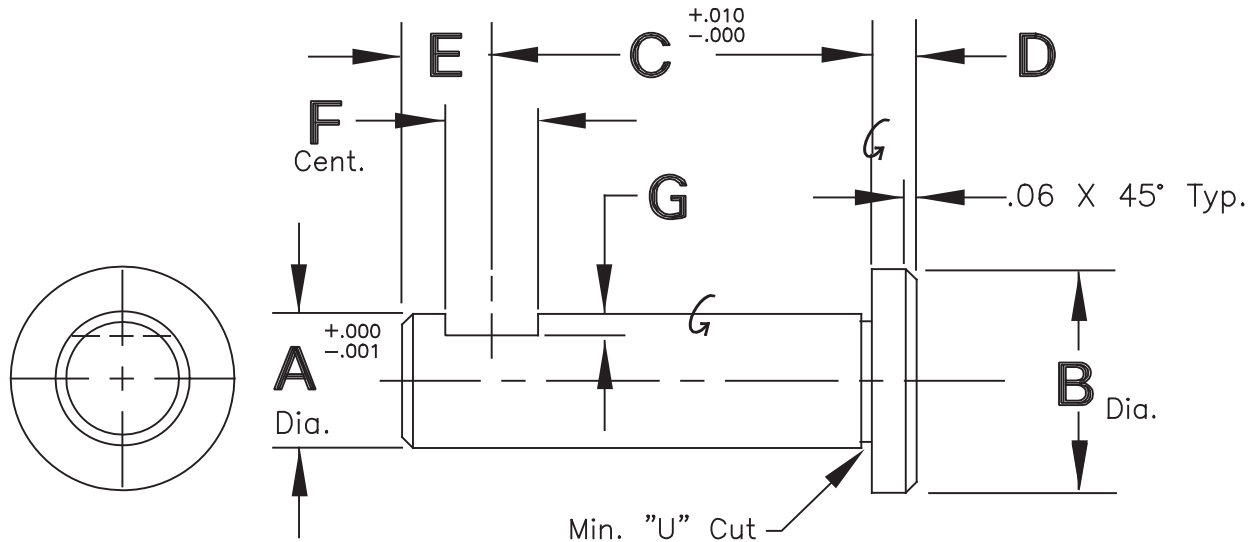
To order this product METRIC, use 'M' before the model number and millimeters for dimensions.

Example: MCHPH-20-100-LA-50

Detail Standard Co.

HEAD PIN WITH FLAT

Type HSFH, HSFA & HSFC



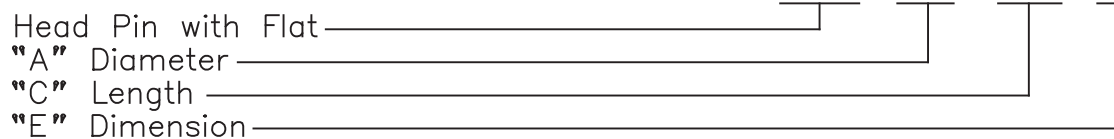
A Dia.	B Dia.	D	E	F	G	CAD FILE NO.
.250	.50	.12	.25	.28	.06	HSF250
.312	.56	.12	.25	.28	.06	HSF312
.375	.62	.18	.31	.40	.06	HSF375
.438	.88	.18	.31	.40	.06	HSF438
.500	1.00	.25	.44	.40	.09	HSF500
.625	1.12	.25	.44	.40	.09	HSF625
.750	1.25	.25	.50	.53	.12	HSF750
.875	1.38	.31	.50	.53	.12	HSF875
1.000	1.50	.31	.50	.53	.12	HSF1000
1.250	1.88	.38	.50	.53	.12	HSF1250

Type Material & Heat Treat

HSFH 12L14 C.R.S., Carb., Hdn. & Gr., Rock. "C" 55-60, .03 Min. Case.
 HSFA Pre-heat treated Alloy, Rock. "C" 28-32 Uniform Throughout.
 HSFC 1018 C.R.S.

Model Number Development

Detail Standard Pin Ass'y
 HSFH-.500- 2.50 -.62

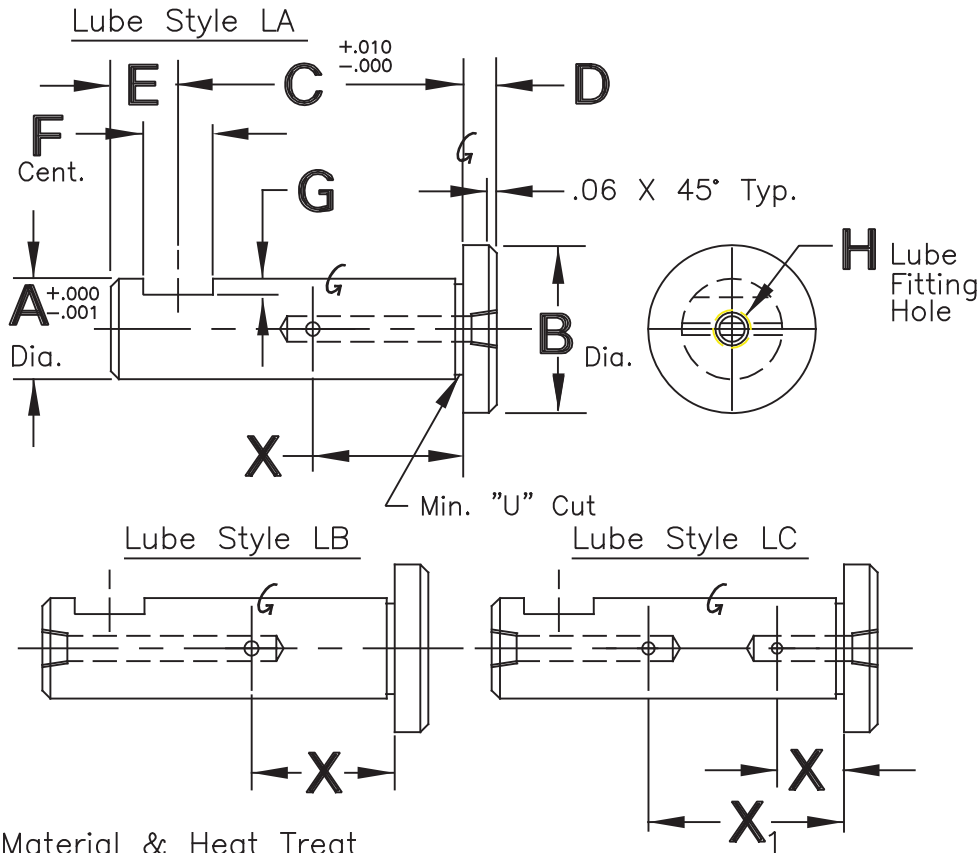


NOTE: Standard lengths for diameters .50 and under are from 1.00" to 3.00" in .25" increments, and standard lengths for diameters .62 and over are from 3.00" to 6.00" in .50" increments. Other lengths may be ordered as "special" items.

To order this product METRIC, use 'M' before the model number and millimeters for dimensions. Example: MHSFH-12-64-18

Detail Standard Co.

HEAD PIN WITH FLAT



Type

HSFH
HSFA
HSFC

Material & Heat Treat

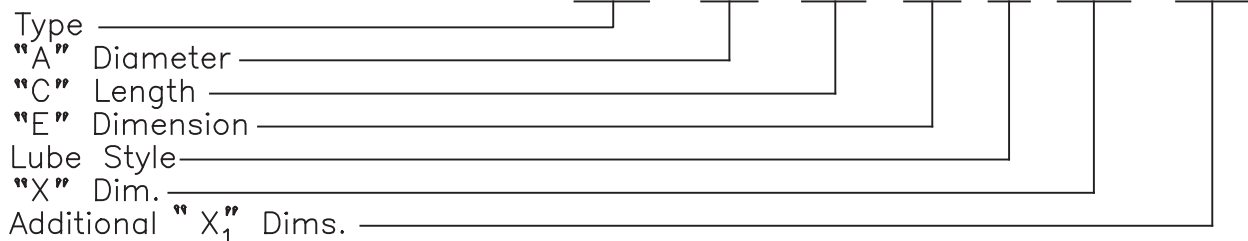
12L14 C.R.S., Carb., Hdn. & Gr., Rock "C" 55-60, .03 Min. Case.
Pre-heat treated Alloy, Rock "C" 28-32 Uniform Throughout.
1018 C.R.S.

A Dia.	B Dia.	D	E	F	G	H		
						Style LA	Style LB	Style LC
.375	.62	.18	.31	.40	.06	5/32 Drive	5/32 Drive	5/32 Drive
.438	.88	.18	.31	.40	.06	5/32 Drive	5/32 Drive	5/32 Drive
.500	1.00	.25	.44	.40	.09	1/4-28 ST.	5/32 Drive	5/32 Drive
.625	1.12	.25	.44	.40	.09	1/8-27 NPT.	1/4-28 ST.	1/4-28 ST.
.750	1.25	.25	.50	.53	.12	1/8-27 NPT.	1/8-27 NPT.	1/8-27 NPT.
.875	1.38	.31	.50	.53	.12	1/8-27 NPT.	1/8-27 NPT.	1/8-27 NPT.
1.000	1.50	.31	.50	.53	.12	1/8-27 NPT.	1/8-27 NPT.	1/8-27 NPT.
1.250	1.88	.38	.50	.53	.12	1/8-27 NPT.	1/8-27 NPT.	1/8-27 NPT.

Model Number Development

Detail Standard Pin

HSFH -.750- 4.00 -.75 -LA- 2.00 -



NOTE: All pins with lube holes are "special" items

To order this product METRIC, use 'M' before the model number and millimeters for dimensions.

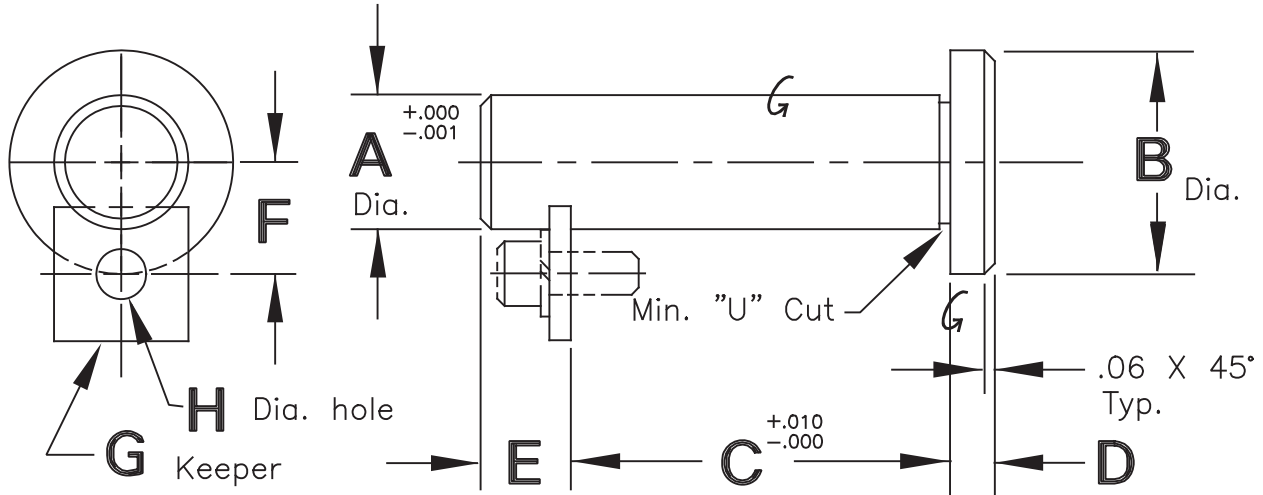
Example: MHSFH-20-100-20-LA-50

Detail Standard Co.

HEAD PIN WITH KEEPER

SEE PAGE E-1
FOR KEEPERS

Type HKPH, HKPA & HKPC



A Dia.	B Dia.	D	E	F	G	H	CAD FILE NO.
.250	.50	.12	.40	.31	K-1	.22	HKP250
.312	.56	.12	.40	.34	K-1	.22	HKP312
.375	.62	.18	.40	.38	K-1	.22	HKP375
.438	.88	.18	.50	.47	K-2	.28	HKP438
.500	1.00	.25	.50	.50	K-2	.28	HKP500
.625	1.12	.25	.50	.56	K-2	.28	HKP625
.750	1.25	.25	.50	.62	K-2	.28	HKP750
.875	1.38	.31	.50	.69	K-2	.28	HKP875
1.000	1.50	.31	.56	.88	K-3	.34	HKP1000
1.250	1.88	.38	.56	1.00	K-3	.34	HKP1250

Type Material & Heat Treat

HKPH 12L14 C.R.S., Carb., Hdn. & Gr., Rock. "C" 55-60, .03 Min. Case.
 HKPA Pre-heat treated Alloy, Rock."C" 28-32 Uniform Throughout.
 HKPC 1018 C.R.S.

Keeper included with assembly (screw not included)

Model Number Development

Detail Standard Pin Ass'y
 HKPH-.500- 2.50

Head Pin with Keeper _____
 "A" Diameter _____
 "C" Length _____

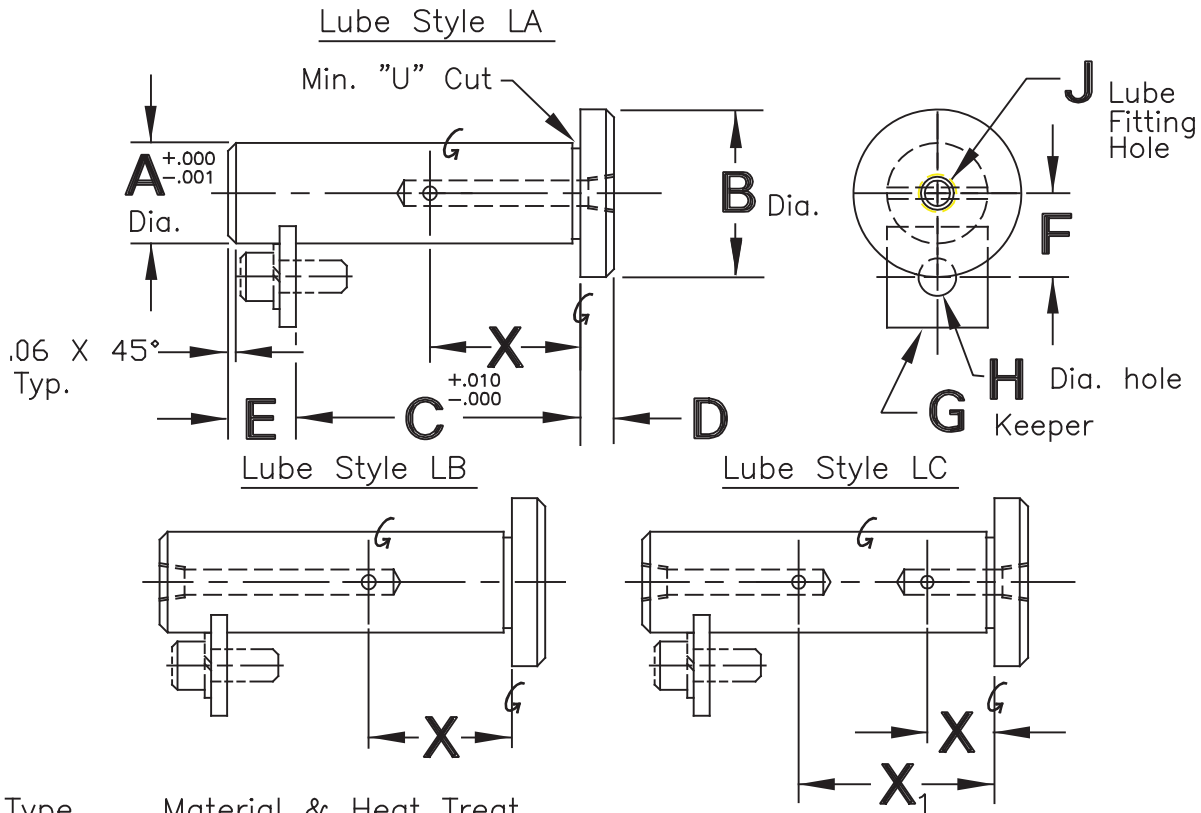
NOTE: Standard lengths for diameters .50 and under are from 1.00" to 3.00" in .25" increments, and standard lengths for diameters .62 and over are from 3.00" to 6.00" in .50" increments. Other lengths may be ordered as "special" items.

To order this product METRIC, use 'M' before the model number and millimeters for dimensions. Example: MHKPH-12-64

Detail Standard Co.

HEAD PIN WITH KEEPER

SEE PAGE E-1
FOR KEEPERS



Type	Material & Heat Treat
HKPH	12L14 C.R.S., Carb.,Hdn. & Gr., Rock "C" 55-60, .03 Min. Case.
HKPA	Pre-heat treated Alloy, Rock. "C" 28-32 Uniform Throughout.
HKPC	1018 C.R.S.

A Dia.	B Dia.	D	E	F	G	H	J		
							Style LA	Style LB	Style LC
.375	.62	.18	.40	.38	K-1	.22	1/4-28 ST	5/32 Drive	5/32 Drive
.438	.88	.18	.50	.47	K-2	.28	1/4-28 ST	5/32 Drive	5/32 Drive
.500	1.00	.25	.50	.50	K-2	.28	1/4-28 ST	5/32 Drive	5/32 Drive
.625	1.12	.25	.50	.56	K-2	.28	1/8-27 NPT	1/4-28 ST	1/4-28 ST
.750	1.25	.25	.50	.62	K-2	.28	1/8-27 NPT	1/8-27 NPT	1/8-27 NPT
.875	1.38	.31	.50	.68	K-2	.28	1/8-27 NPT	1/8-27 NPT	1/8-27 NPT
1.000	1.50	.31	.56	.88	K-3	.34	1/8-27 NPT	1/8-27 NPT	1/8-27 NPT
1.250	1.88	.38	.56	1.00	K-3	.34	1/8-27 NPT	1/8-27 NPT	1/8-27 NPT

Model Number Development

Detail Standard Pin Ass'y

HKPH - .750 - 4.00 - LA - 2.00 -

Type _____
 "A" Diameter _____
 "C" Length _____
 Lube Style _____
 "X" Dim. _____
 Additional "X₁" Dims. _____

NOTE: All pins with lube holes are "special" items

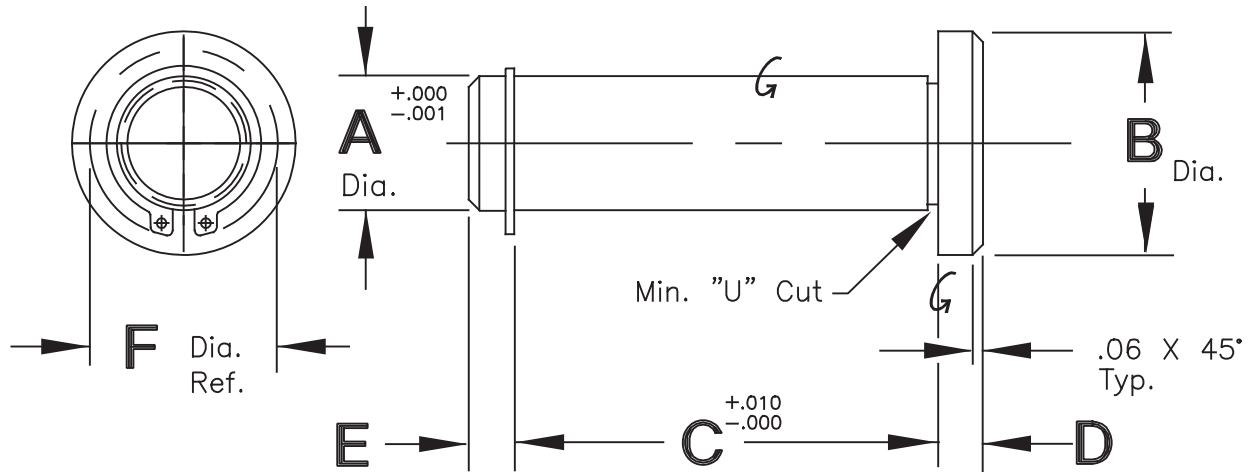
To order this product METRIC, use 'M' before the model number and millimeters for dimensions.

Example: MHKPH-20-100-LA-50

Detail Standard Co.

HEAD PIN WITH SNAP RING

Type HSPH, HSPA & HSPC



A Dia.	B Dia.	D	E	F	CAD FILE NO.
.250	.50	.12	.12	.43	HSP250
.312	.56	.12	.16	.52	HSP312
.375	.62	.18	.18	.59	HSP375
.438	.88	.18	.18	.64	HSP438
.500	1.00	.25	.25	.74	HSP500
.625	1.12	.25	.25	.87	HSP625
.750	1.25	.25	.25	1.05	HSP750
.875	1.38	.31	.25	1.16	HSP875
1.000	1.50	.31	.25	1.35	HSP1000
1.250	1.88	.38	.31	1.62	HSP1250

Type Material & Heat Treat

HSPH 12L14 C.R.S., Carb., Hdn. & Gr., Rock. "C" 55-60, .03 Min. Case.
 HSPA Pre-heat treated Alloy, Rock. "C" 28-32 Uniform Throughout.
 HSPC 1018 C.R.S.

Snap ring included with assembly.

Model Number Development

Detail Standard Pin Ass'y
 HSPH-.500- 2.50

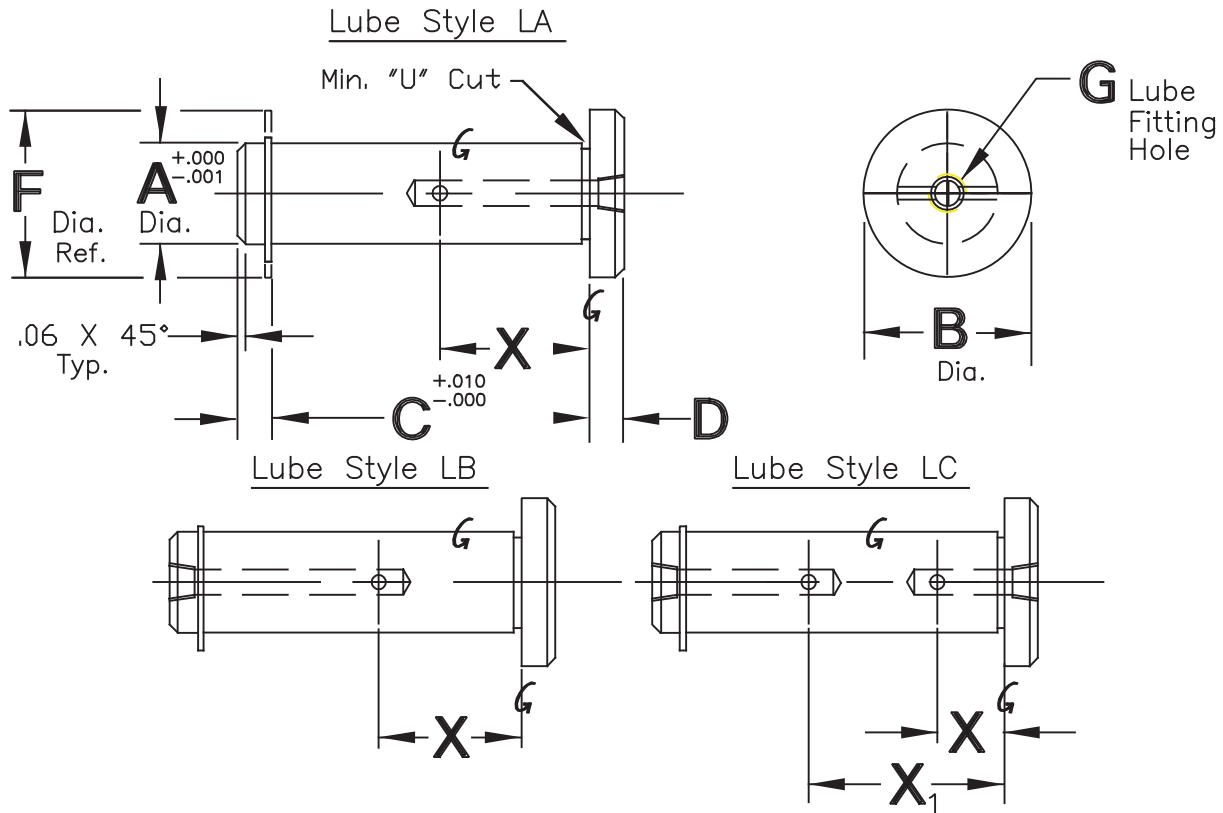
Head Pin with Snap Ring _____
 "A" Diameter _____
 "C" Length _____

NOTE: Standard lengths for diameters .50 and under are from 1.00" to 3.00" in .25" increments, and standard lengths for diameters .62 and over are from 3.00" to 6.00" in .50" increments. Other lengths may be ordered as "special" items.

To order this product METRIC, use 'M' before the model number and millimeters for dimensions. Example: MHSPH-12-64

Detail Standard Co.

HEAD PIN WITH SNAP RING



Type Material & Heat Treat

HSPH 12L14 C.R.S., Carb., Hdn. & Gr., Rock "C" 55-60, .03 Min. Case.
 HSPA Pre-heat treated Alloy, Rock "C" 28-32 Uniform Throughout.
 HSPC 1018 C.R.S.

A Dia.	B Dia.	D	E	F Dia.	G
.375	.62	.18	.18	.59	1/4-28 ST
.438	.88	.18	.18	.64	1/4-28 ST
.500	1.00	.25	.25	.74	1/4-28 ST
.625	1.12	.25	.25	.87	1/8-27 NPT
.750	1.25	.25	.25	1.05	1/8-27 NPT
.875	1.38	.31	.25	1.16	1/8-27 NPT
1.000	1.50	.31	.25	1.35	1/8-27 NPT
1.250	1.88	.38	.31	1.62	1/8-27 NPT

Model Number Development

Detail Standard Pin Ass'y
 HSPH - .750 - 4.00 - LA - 2.00 -

Type _____
 "A" Diameter _____
 "C" Length _____
 Lube Style _____
 "X" Dim. _____
 Additional "X₁" Dims. _____

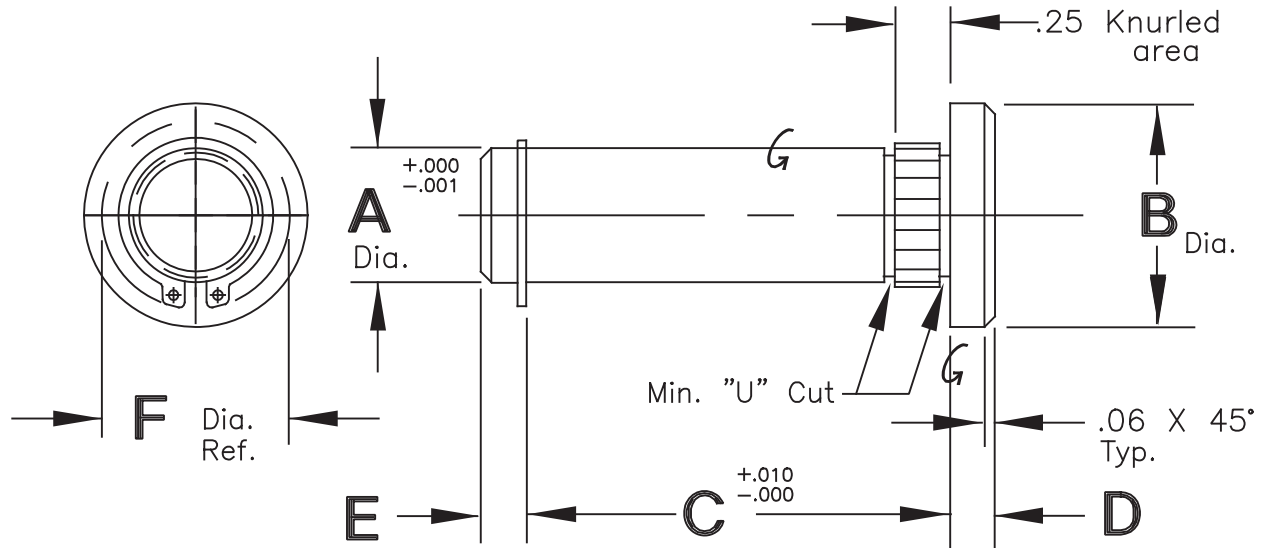
NOTE: All pins with lube holes are "special" items

To order this product METRIC, use 'M' before the model number and millimeters for dimensions.
 Example: MHSPH-20-100-LA-50

Detail Standard Co.

HEAD PIN WITH KNURL AND SNAP RING

Type KSPH, KSPA & KSPC



A Dia.	B Dia.	D	E	F	CAD FILE NO.
.250	.50	.12	.12	.43	KSP250
.312	.56	.12	.16	.52	KSP312
.375	.62	.18	.18	.59	KSP375
.438	.88	.18	.18	.64	KSP438
.500	1.00	.25	.25	.74	KSP500
.625	1.12	.25	.25	.87	KSP625
.750	1.25	.25	.25	1.05	KSP750
.875	1.38	.31	.25	1.16	KSP875
1.000	1.50	.31	.25	1.35	KSP1000
1.250	1.88	.38	.31	1.62	KSP1250

Type Material & Heat Treat

KSPH 12L14 C.R.S., Carb., Hdn. & Gr., Rock. "C" 55-60, .03 Min. Case.
 KSPA Pre-heat treated Alloy, Rock. "C" 28-32 Uniform Throughout.
 KSPC 1018 C.R.S.

Snap ring included with assembly.

Model Number Development

Detail Standard Pin Ass'y
 KSPH-.500- 2.50

Head Pin with Knurl and Snap Ring

"A" Diameter

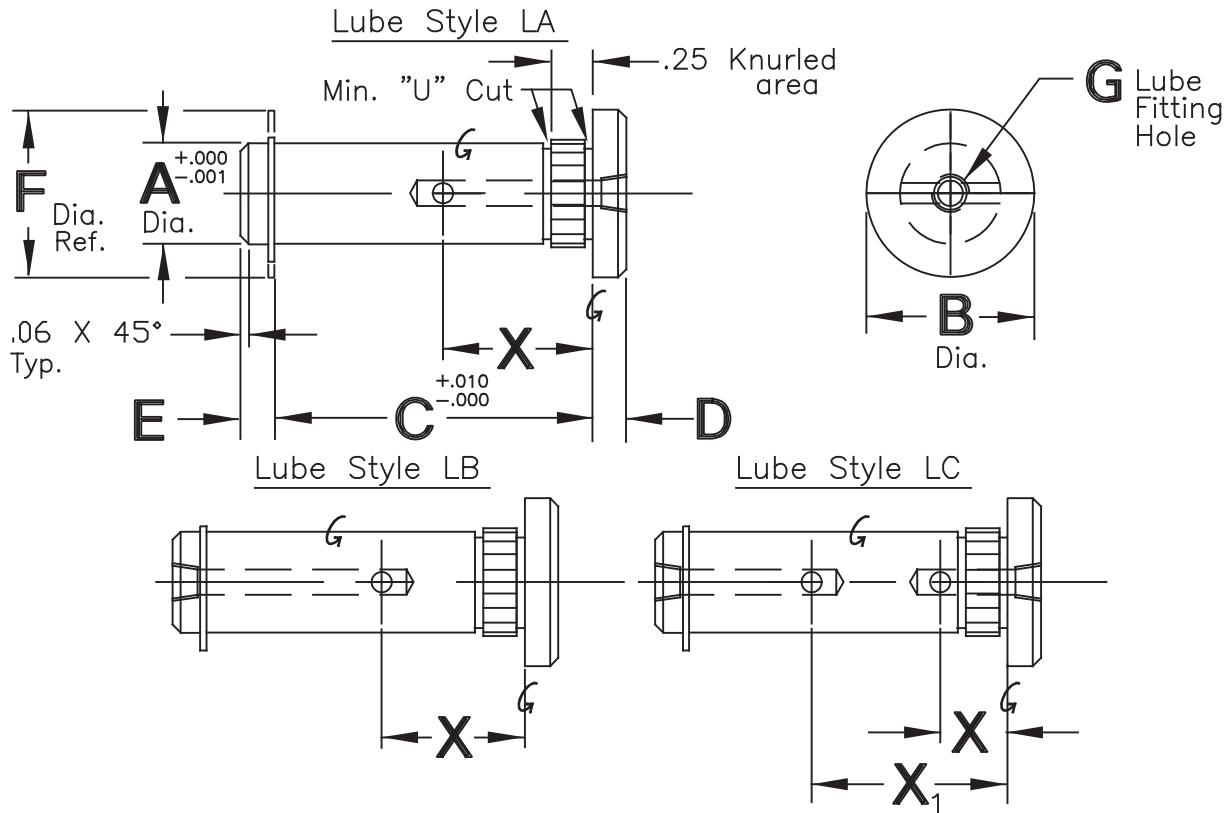
"C" Length

NOTE: Standard lengths for diameters .50 and under are from 1.00" to 3.00" in .25" increments, and standard lengths for diameters .62 and over are from 3.00" to 6.00" in .50" increments. Other lengths may be ordered as "special" items.

To order this product METRIC, use 'M' before the model number and millimeters for dimensions.
 Example: MKSPH-12-64

Detail Standard Co.

HEAD PIN WITH KNURL AND SNAP RING



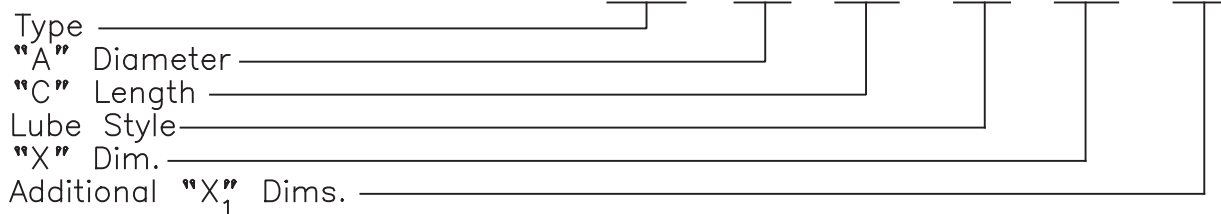
Type	Material & Heat Treat
KSPH	12L14 C.R.S., Carb., Hdn. & Gr., Rock "C" 55-60, .03 Min. Case.
KSPA	Pre-heat treated Alloy, Rock "C" 28-32 Uniform Throughout.
KSPC	1018 C.R.S.

A Dia.	B Dia.	D	E	F Dia.	G
.375	.62	.18	.18	.59	1/4-28 ST
.438	.88	.18	.18	.64	1/4-28 ST
.500	1.00	.25	.25	.74	1/4-28 ST
.625	1.12	.25	.25	.87	1/8-27 NPT
.750	1.25	.25	.25	1.05	1/8-27 NPT
.875	1.38	.31	.25	1.16	1/8-27 NPT
1.000	1.50	.31	.25	1.35	1/8-27 NPT
1.250	1.88	.38	.31	1.62	1/8-27 NPT

Model Number Development

Detail Standard Pin Ass'y

KSPH - .750 - 4.00 - LA - 2.00 -



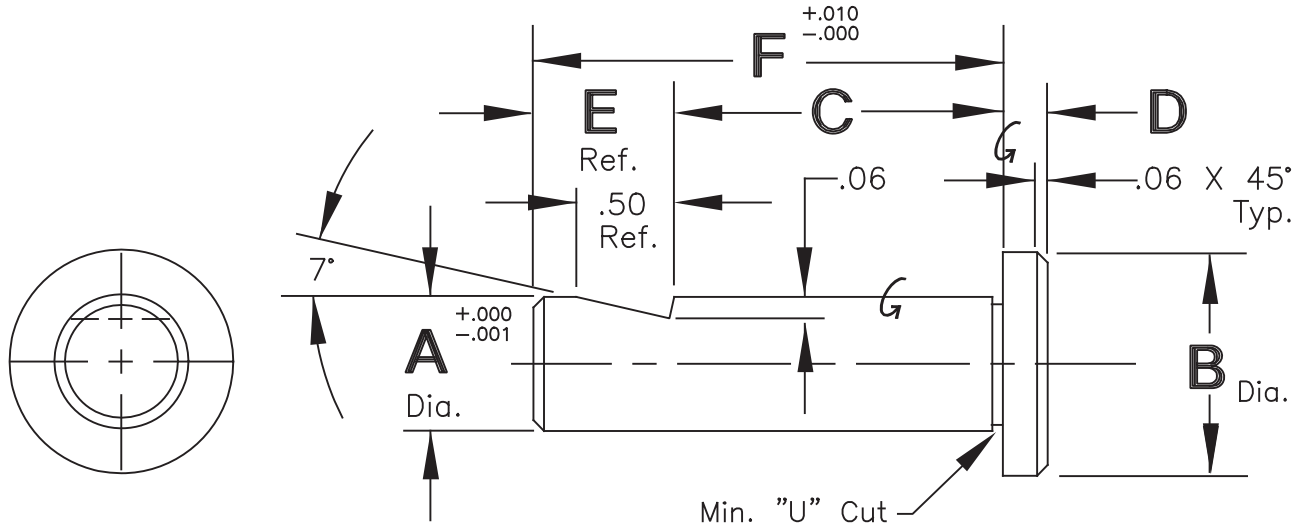
NOTE: All pins with lube holes are "special" items

To order this product METRIC, use 'M' before the model number and millimeters for dimensions.
Example: MKSPH-20-100-LA-50

Detail Standard Co.

HEAD PIN WITH WHISTLENOTCH

Type HWH, HWA & HWC



A Dia.	B Dia.	D	E	CAD FILE NO.
.250	.50	.12	.62	HW250
.312	.56	.12	.62	HW312
.375	.62	.18	.62	HW375
.438	.88	.18	.62	HW438
.500	1.00	.25	.75	HW500
.625	1.12	.25	.75	HW625
.750	1.25	.25	.75	HW750
.875	1.38	.31	.75	HW875
1.000	1.50	.31	.75	HW1000
1.250	1.88	.38	.75	HW1250

Type Material & Heat Treat

HWH 12L14 C.R.S., Carb., Hdn. & Gr., Rock. "C" 55-60, .03 Min. Case.
 HWA Pre-heat treated Alloy, Rock. "C" 28-32 Uniform Throughout.
 HWC 1018 C.R.S.

Model Number Development

Detail Standard Pin Ass'y
 HWH - .500 - 2.50 - 3.25

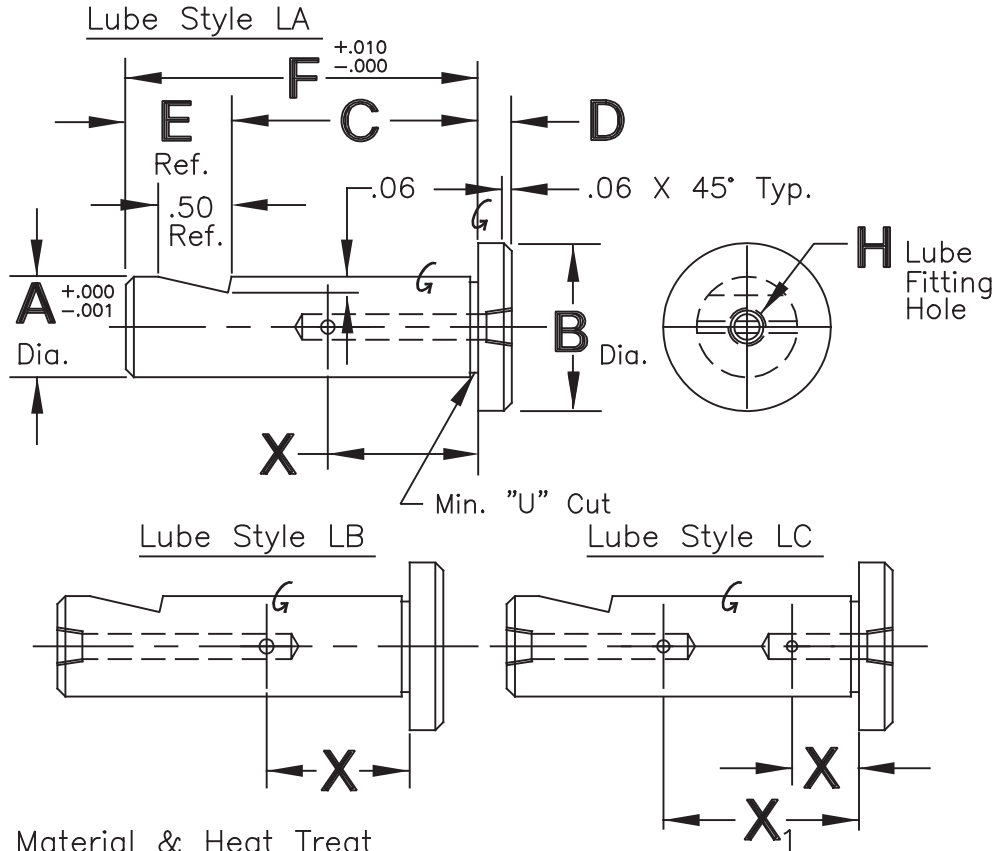
Head Pin with Whistlenotch _____
 "A" Diameter _____
 "C" Dimension _____
 "F" Length _____

NOTE: Standard lengths for diameters .50 and under are from 1.00" to 3.00" in .25" increments, and standard lengths for diameters .62 and over are from 3.00" to 6.00" in .50" increments. Other lengths may be ordered as "special" items.

To order this product METRIC, use 'M' before the model number and millimeters for dimensions. Example: MWH-12-64-82

Detail Standard Co.

HEAD PIN WITH WHISTLENOTCH



Type

Material & Heat Treat

HWH

12L14 C.R.S., Carb., Hdn. & Gr., Rock "C" 55-60, .03 Min. Case.

HWA

Pre-heat treated Alloy, Rock "C" 28-32 Uniform Throughout.

HWC

1018 C.R.S.

A Dia.	B Dia.	D	E	H		
				Style LA	Style LB	Style LC
.375	.62	.18	.62	5/32 Drive	5/32 Drive	5/32 Drive
.438	.88	.18	.62	5/32 Drive	5/32 Drive	5/32 Drive
.500	1.00	.25	.75	1/4-28 ST.	5/32 Drive	5/32 Drive
.625	1.12	.25	.75	1/8-27 NPT.	1/4-28 ST.	1/4-28 ST.
.750	1.25	.25	.75	1/8-27 NPT.	1/8-27 NPT.	1/8-27 NPT.
.875	1.38	.31	.75	1/8-27 NPT.	1/8-27 NPT.	1/8-27 NPT.
1.000	1.50	.31	.75	1/8-27 NPT.	1/8-27 NPT.	1/8-27 NPT.
1.250	1.88	.38	.75	1/8-27 NPT.	1/8-27 NPT.	1/8-27 NPT.

Model Number Development

Detail Standard Pin

HWH -.750-4.00-5.00-LA-2.00-

Type

"A" Diameter

"C" Length

"F" Dimension

Lube Style

"X" Dim.

Additional "X₁" Dims.

NOTE: All pins with lube holes are "special" items

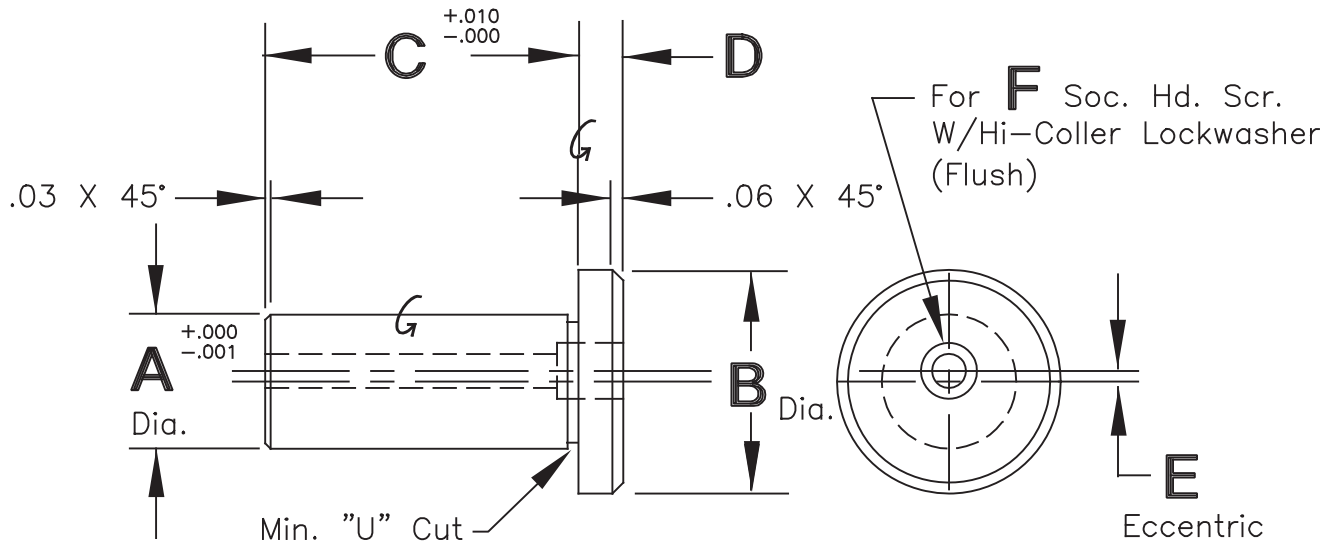
To order this product METRIC, use 'M' before the model number and millimeters for dimensions.

Example: MHW-20-100-130-LA-50

Detail Standard Co.

STUB PIN

Type SPH, SPA & SPC



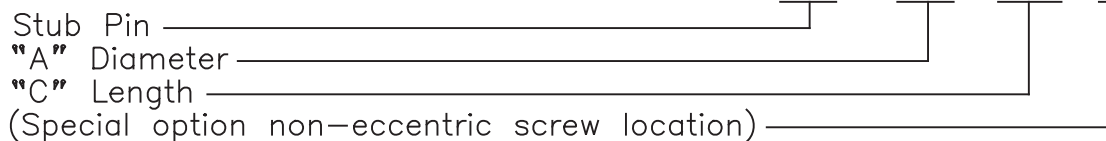
A Dia.	B Dia.	D	E	F	CAD FILE NO.
.438	1.00	.18	.03	#6	SP438
.500	1.12	.18	.03	#6	SP500
.625	1.25	.25	.06	#10	SP625
.750	1.50	.25	.06	1/4	SP750
.875	1.62	.25	.06	5/16	SP875
1.000	1.75	.38	.06	3/8	SP1000
1.250	2.00	.38	.06	3/8	SP1250

Type Material & Heat Treat

SPH 12L14 C.R.S., Carb., Hdn. & Gr., Rock. "C" 55-60, .03 Min. Case.
 SPA Pre-heat treated Alloy, Rock. "C" 28-32 Uniform Throughout.
 SPC 1018 C.R.S.

Model Number Development

Detail Standard Pin Ass'y
 SPH - .500 - 2.50 - N



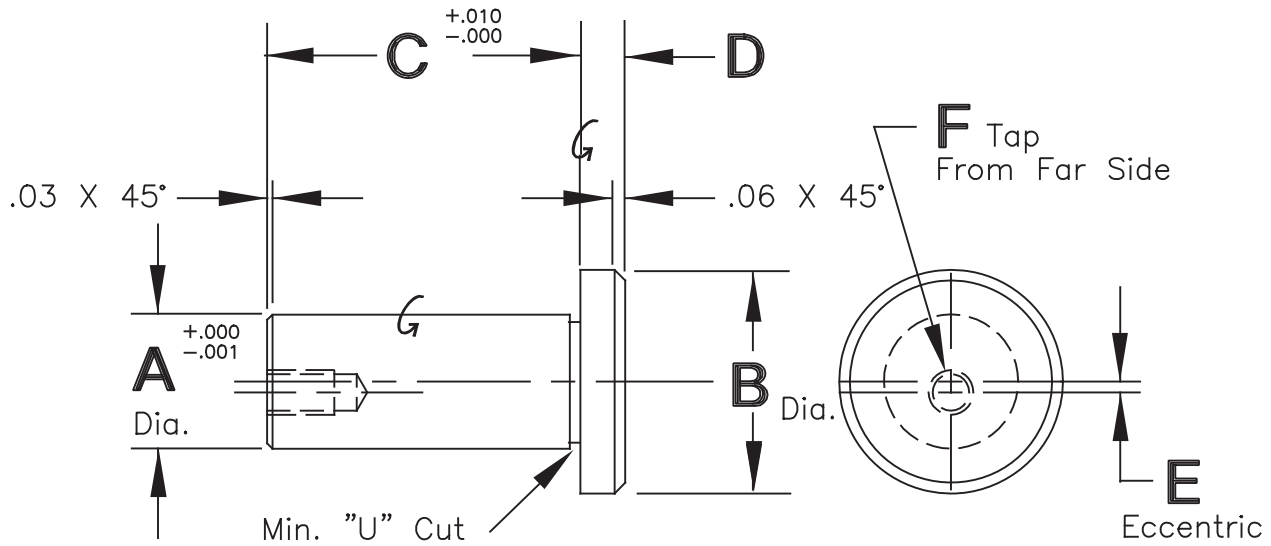
NOTE: Standard lengths for diameters .50 and under are from 1.00" to 3.00" in .25" increments, and standard lengths for diameters .62 and over are from 3.00" to 6.00" in .50" increments. Other lengths may be ordered as "special" items.

To order this product METRIC, use 'M' before the model number and millimeters for dimensions. Example: MSPH-12-64-N

Detail Standard Co.

STUB PIN

Type TSH, TSA & TSC

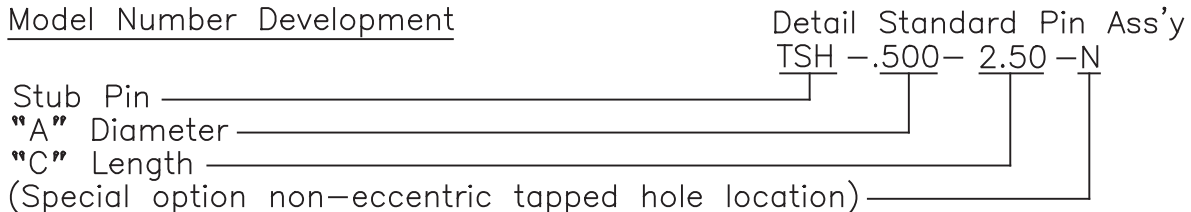


A Dia.	B Dia.	D	E	F	CAD FILE NO.
.438	1.00	.18	.03	#10-32x1/2	TS438
.500	1.12	.18	.03	#10-32x1/2	TS500
.625	1.25	.25	.06	1/4-20x5/8	TS625
.750	1.50	.25	.06	5/16-18x5/8	TS750
.875	1.62	.25	.06	5/16-18x5/8	TS875
1.000	1.75	.38	.06	5/16-18x5/8	TS1000
1.250	2.00	.38	.06	3/8-16x3/4	TS1250

Type Material & Heat Treat

TSH 12L14 C.R.S., Carb., Hdn. & Gr., Rock. "C" 55-60, .03 Min. Case.
 TSA Pre-heat treated Alloy, Rock. "C" 28-32 Uniform Throughout.
 TSC 1018 C.R.S.

Model Number Development



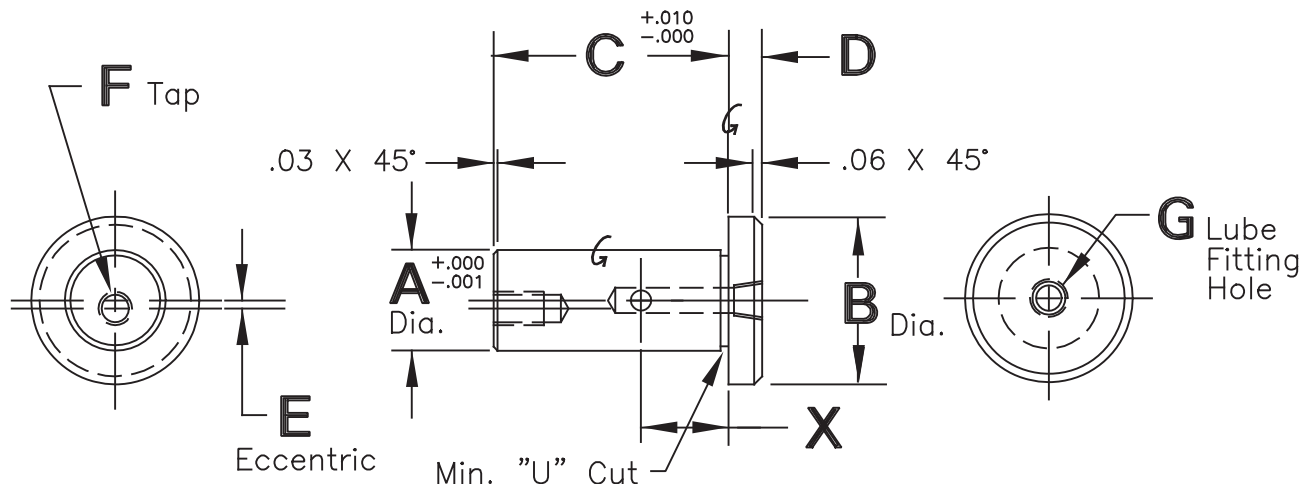
NOTE: Standard lengths for diameters .50 and under are from 1.00" to 3.00" in .25" increments, and standard lengths for diameters .62 and over are from 3.00" to 6.00" in .50" increments. Other lengths may be ordered as "special" items.

To order this product METRIC, use 'M' before the model number and millimeters for dimensions. Example: MTSH-12-64-N

Detail Standard Co.

STUB PIN

Lube Style LA



A Dia.	B Dia.	D	E	F	G
.438	1.00	.18	.03	#10-32x1/2	1/4-28 ST
.500	1.12	.18	.03	#10-32x1/2	1/4-28 ST
.625	1.25	.25	.06	1/4-20x5/8	1/4-28 ST
.750	1.50	.25	.06	5/16-18x5/8	1/8-27 NPT
.875	1.62	.25	.06	5/16-18x5/8	1/8-27 NPT
1.000	1.75	.38	.06	5/16-18x5/8	1/8-27 NPT
1.250	2.00	.38	.06	3/8-16x3/4	1/8-27 NPT

Type Material & Heat Treat
 TSH 12L14 C.R.S., Carb., Hdn. & Gr., Rock "C" 55-60, .03 Min. Case.
 TSA Pre-heat treated Alloy, Rock. "C" 28-32 Uniform Throughout.
 TSC 1018 C.R.S.

Model Number Development Detail Standard Stub Pin
 TSH - .750 - 2.00 - LA - .88 - -N
 Type _____
 "A" Diameter _____
 "C" Length _____
 Lube Style _____
 "X" Dim. _____
 Additional "X" Dims. _____
 (Special option non-eccentric tapped hole location) _____

NOTE: All pins with lube holes are "special" items
 To order this product METRIC, use 'M' before the model number and millimeters for dimensions.
 Example: MTSH-20-100-LA-50-N