

Detail Standard Co.

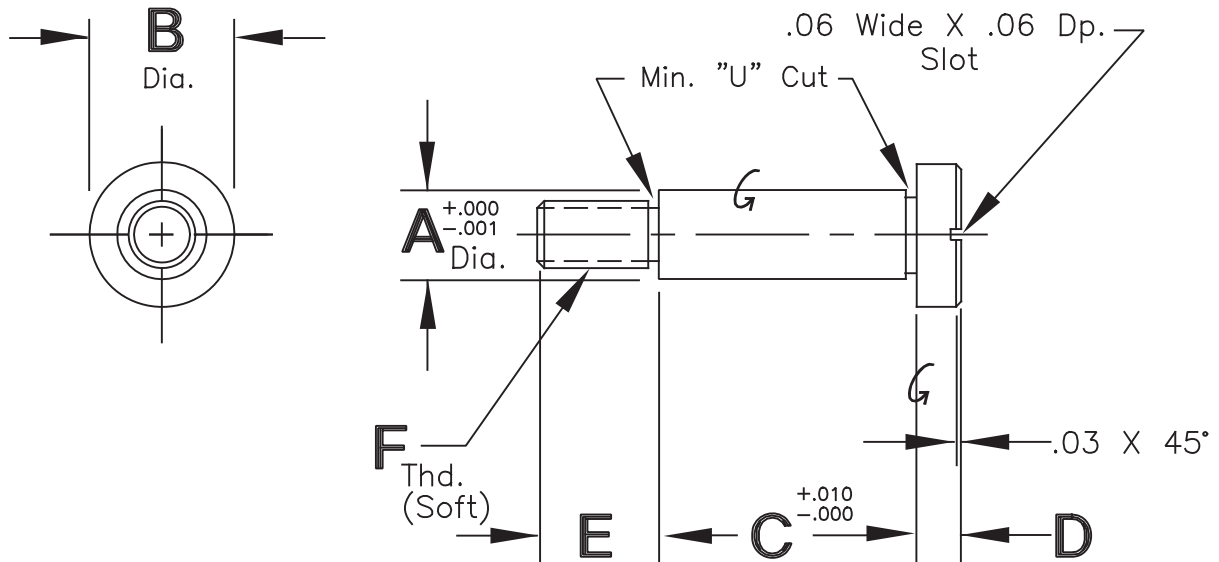
SECTION D

SHOULDER SCREWS

Detail Standard Co.

LIGHT DUTY SHOULDER SCREW

Type LDSH, LDSA & LDSC
(COARSE THREAD)

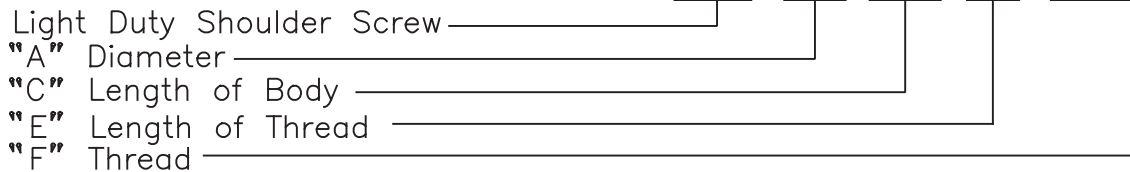


A Dia.	B Dia.	* C Length							D	* E Length					F	CAD FIL NO.
		.50	.75	1.00	1.25	1.50	1.75	2.00		.44	.56	.68	.81	.94		
.312	.50	X	X	X					.12	X	X				1/4-20	LDS312
.375	.68		X	X	X				.18		X	X			5/16-18	LDS375
.438	.75		X		X				.18			X	X		5/16-18	LDS438
.500	.81			X	X	X			.25			X	X		3/8-16	LDS500
.625	.94					X		X	.25				X	X	1/2-13	LDS625

Type	Material & Heat Treat
LDSH	12L14 C.R.S., Carb., Hdn. & Gr., Rock. "C" 55-60, .03 Min. Case.
LDSA	Pre-heat treated Alloy, Rock. "C" 28-32 Uniform Throughout.
LDSC	1018 C.R.S.

Model Number Development

Detail Standard Shoulder Screw
LDSH-.500-1.50-.56-3/8-16



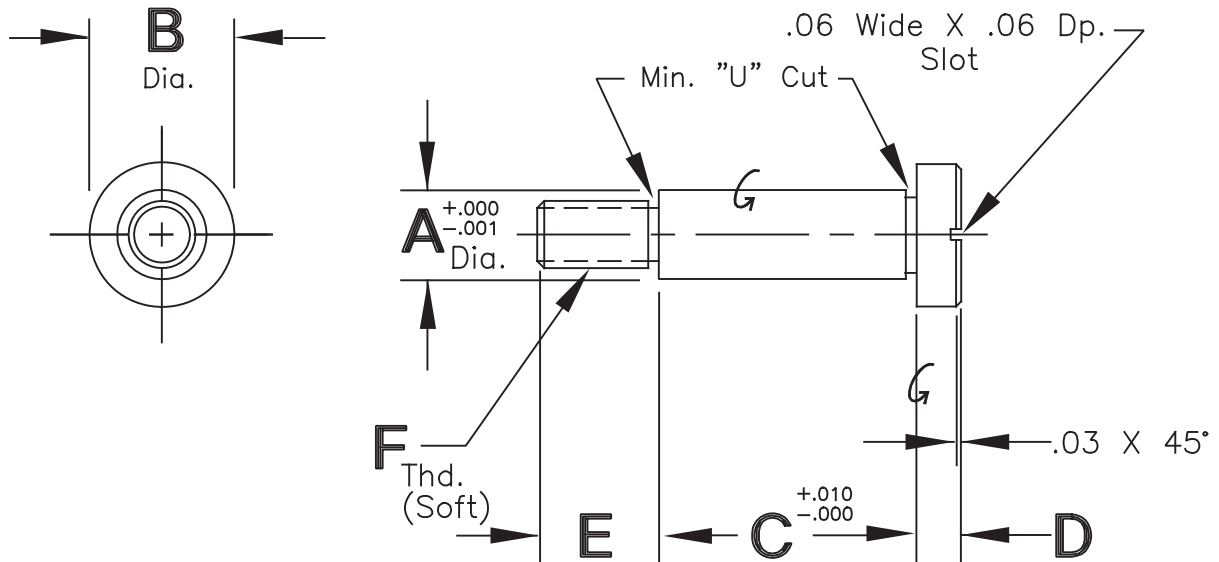
* NOTE: Lengths indicated by "X" in chart above are standard. Other lengths may be ordered as "special" items.

To order this product METRIC, use 'M' before the model number and millimeters for dimensions.
Example: MLDSH-12-38-14-M10-1.5

Detail Standard Co.

LIGHT DUTY SHOULDER SCREW

Type LFSH, LFSA & LFSC
(FINE THREAD)

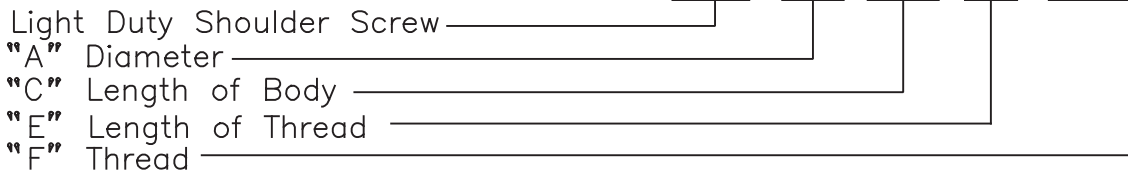


A Dia.	B Dia.	* C Length							D	* E Length					F	CAD FIL NO.
		.50	.75	1.00	1.25	1.50	1.75	2.00		.44	.56	.68	.81	.94		
.312	.50	X	X	X					.12	X	X				1/4-28	LFS312
.375	.68		X	X	X				.18		X	X			5/16-24	LFS375
.438	.75		X		X				.18			X	X		5/16-24	LFS438
.500	.81			X	X	X			.25			X	X		3/8-24	LFS500
.625	.94					X	X		.25				X	X	1/2-20	LFS625

Type	Material & Heat Treat
LFSH	12L14 C.R.S., Carb., Hdn. & Gr., Rock. "C" 55-60, .03 Min. Case.
LFSA	Pre-heat treated Alloy, Rock. "C" 28-32 Uniform Throughout.
LFSC	1018 C.R.S.

Model Number Development

Detail Standard Shoulder Screw
LFSH-.500-1.50-.56-3/8-24



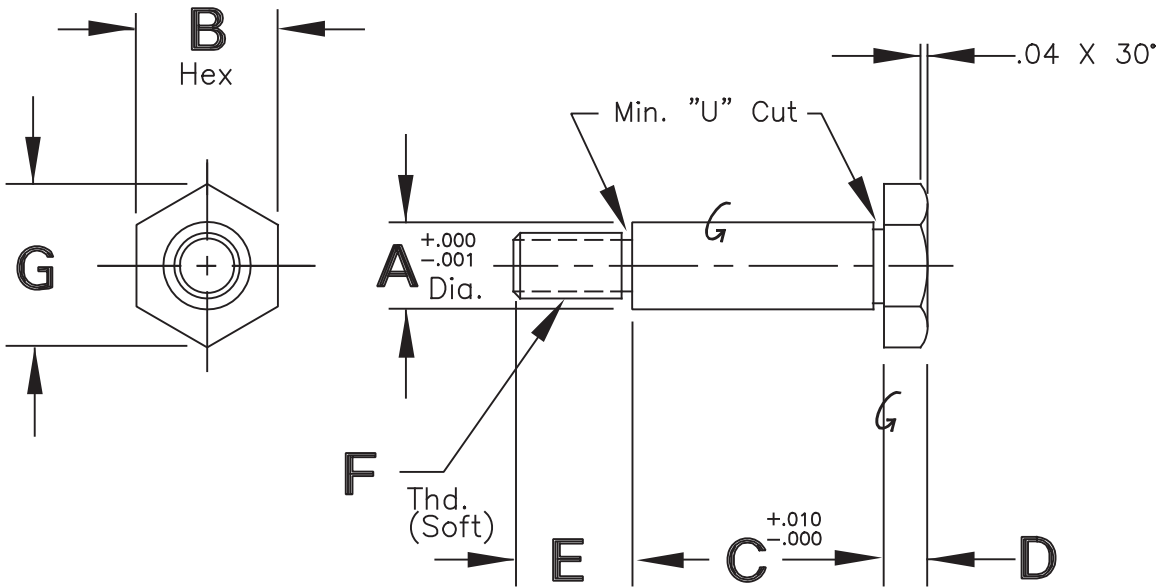
* NOTE: Lengths indicated by "X" in chart above are standard. Other lengths may be ordered as "special" items.

To order this product METRIC, use 'M' before the model number and millimeters for dimensions.
Example: MLFSH-12-38-14-M10-1.25

Detail Standard Co.

HEX HEAD SHOULDER SCREWS

Type HSSH, HHSA & HHSC
(COARSE THREAD)



A Dia.	B Hex	* C Length							D	* E Length					F	G	CAD FILE NO.
		1.00	1.50	2.00	3.00	4.00	5.00	6.00		.56	.94	1.44	1.94	2.44			
.625	.88	X	X	X					.25	X	X				1/2-13	1.01	HHS625
.750	1.00	X	X	X					.25	X	X				5/8-11	1.15	HHS750
.875	1.12	X	X	X	X				.25		X	X			3/4-10	1.30	HHS875
1.000	1.25		X	X	X				.31		X	X			3/4-10	1.44	HHS1000
1.250	1.50		X	X	X	X			.31		X	X			7/8-9	1.73	HHS1250
1.500	2.00			X	X		X		.38			X	X		1 1/8-7	2.31	HHS1500
1.750	2.25				X	X		X	.38			X		X	1 3/8-6	2.60	HHS1750
2.000	2.50					X	X	X	.50			X		X	1 1/2-6	2.89	HHS2000

Type Material & Heat Treat

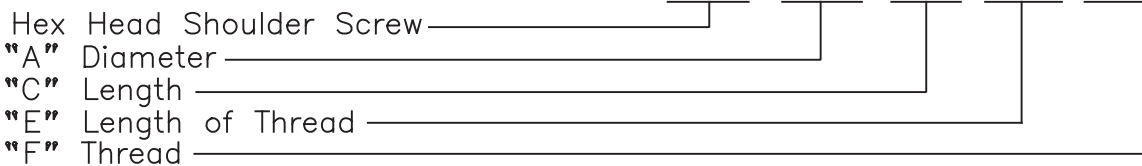
HSSH 12L14 C.R.S., Carb., Hdn. & Gr., Rock. "C" 55-60, .03 Min. Case.

HHSA Pre-heat treated Alloy, Rock. "C" 28-32 Uniform Throughout.

HHSC 1018 C.R.S.

Model Number Development

Detail Standard Shoulder Screw
HSSH-1.000-2.50-1.00-3/4-10

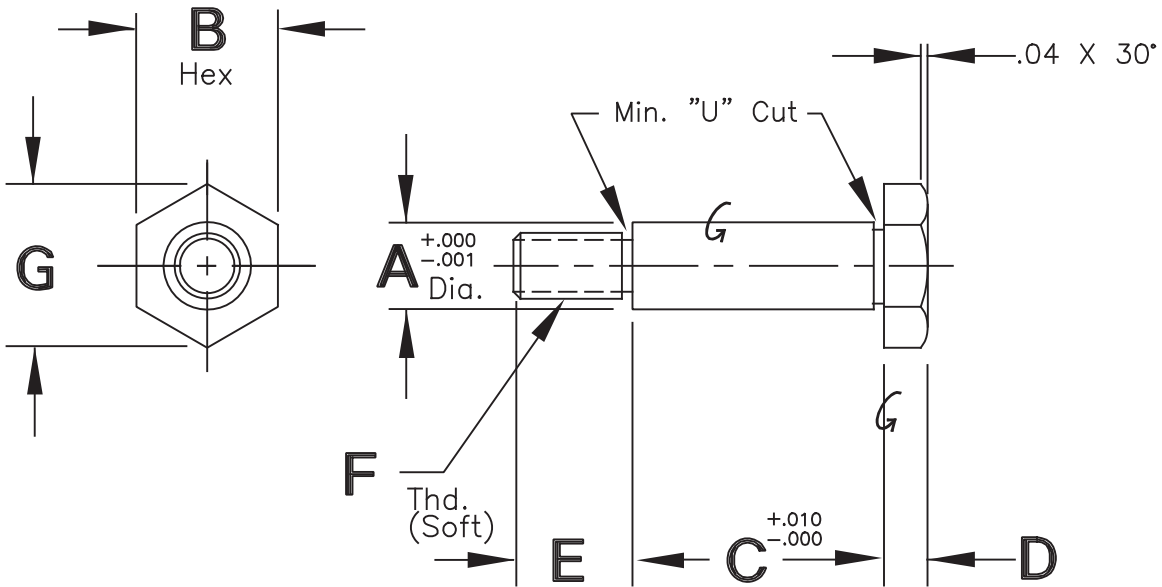


* NOTE: Lengths indicated by "X" in chart above are standard. Other lengths may be ordered as "special" items.
To order this product METRIC, use 'M' before the model number and millimeters for dimensions.
Example: MHSSH-25-64-25-M18-2.5

Detail Standard Co.

HEX HEAD SHOULDER SCREWS

Type HFSH, HFSA & HFSC
(FINE THREAD)



A Dia.	B Hex	* C Length							D	* E Length					F	G	CAD FILE NO.
		1.00	1.50	2.00	3.00	4.00	5.00	6.00		.56	.94	1.44	1.94	2.44			
.625	.88	X	X	X					.25	X	X				1/2-20	1.01	HFS625
.750	1.00	X	X	X					.25	X	X				5/8-18	1.15	HFS750
.875	1.12	X	X	X	X				.25		X	X			3/4-16	1.30	HFS875
1.000	1.25		X	X	X				.31		X	X			3/4-16	1.44	HFS1000
1.250	1.50		X	X	X	X			.31		X	X			7/8-14	1.73	HFS1250
1.500	2.00			X	X		X		.38			X	X		1/8-12	2.31	HFS1500
1.750	2.25				X	X		X	.38			X		X	3/8-12	2.60	HFS1750
2.000	2.50					X	X	X	.50			X		X	1/2-12	2.89	HFS2000

Type Material & Heat Treat

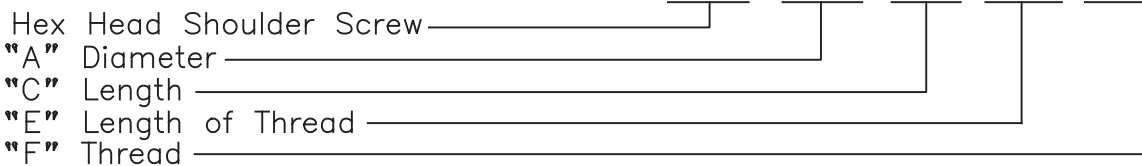
HFSH 12L14 C.R.S., Carb., Hdn. & Gr., Rock. "C" 55-60, .03 Min. Case.

HFSA Pre-heat treated Alloy, Rock. "C" 28-32 Uniform Throughout.

HFSC 1018 C.R.S.

Model Number Development

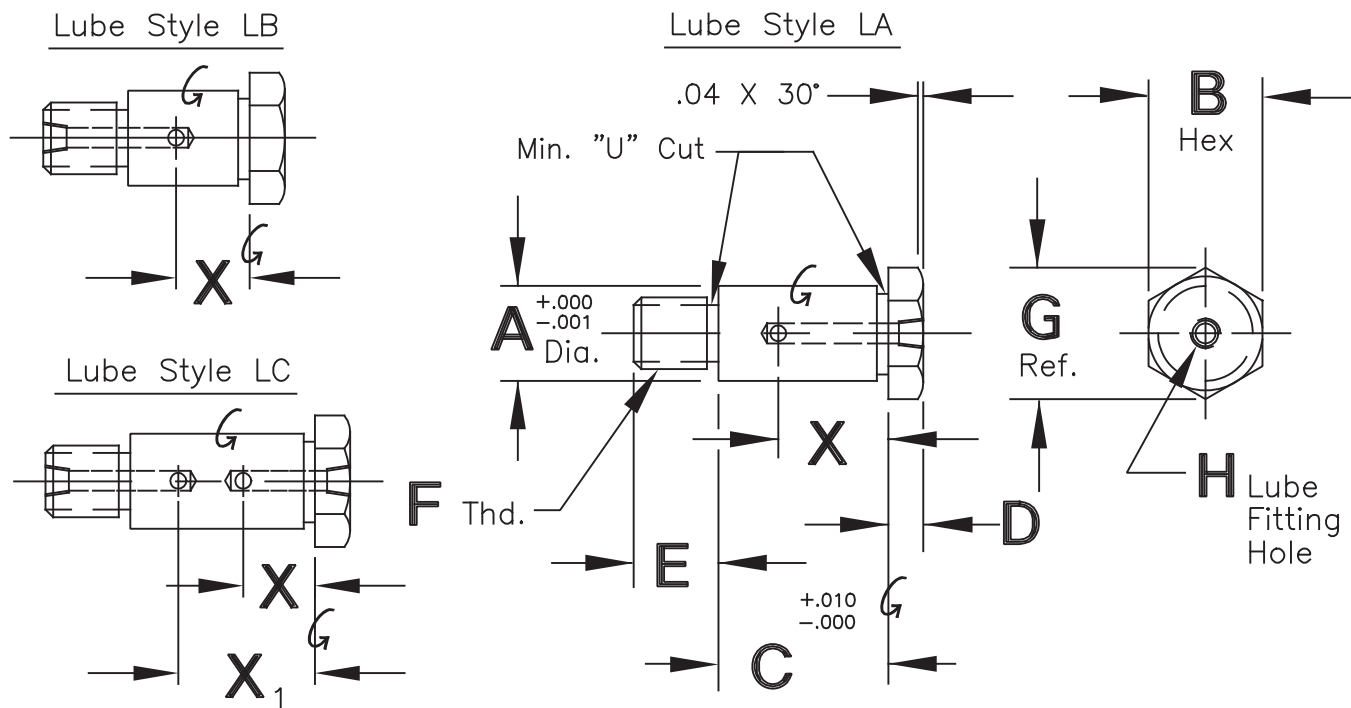
Detail Standard Shoulder Screw
HFSH-1.000-2.50-1.00-3/4-16



* NOTE: Lengths indicated by "X" in chart above are standard. Other lengths may be ordered as "special" items.
To order this product METRIC, use 'M' before the model number and millimeters for dimensions.
Example: MHFSH-25-64-25-M18-1.5

Detail Standard Co.

HEX HEAD SHOULDER SCREWS



A Dia.	B Hex	D	F		G	H		
			HHSH,HHSA & HHSC	HFSH,HFSA & HFSC		Style LA	Style LB	Style LC
.625	.88	.25	1/2-13	1/2-20	1.01	1/8-27 NPT	1/4-28 ST	1/4-28 ST
.750	1.00	.25	5/8-11	5/8-18	1.15	1/8-27 NPT	1/8-27 NPT	1/8-27 NPT
.875	1.12	.25	3/4-10	3/4-16	1.30	1/8-27 NPT	1/8-27 NPT	1/8-27 NPT
1.000	1.25	.31	3/4-10	3/4-16	1.44	1/8-27 NPT	1/8-27 NPT	1/8-27 NPT
1.250	1.50	.31	7/8-9	7/8-14	1.73	1/8-27 NPT	1/8-27 NPT	1/8-27 NPT
1.500	2.00	.38	1 1/8-7	1 1/8-12	2.31	1/8-27 NPT	1/8-27 NPT	1/8-27 NPT
1.750	2.25	.38	1 3/8-6	1 3/8-12	2.60	1/8-27 NPT	1/8-27 NPT	1/8-27 NPT
2.000	2.50	.50	1 1/2-6	1 1/2-12	2.89	1/8-27 NPT	1/8-27 NPT	1/8-27 NPT

Type

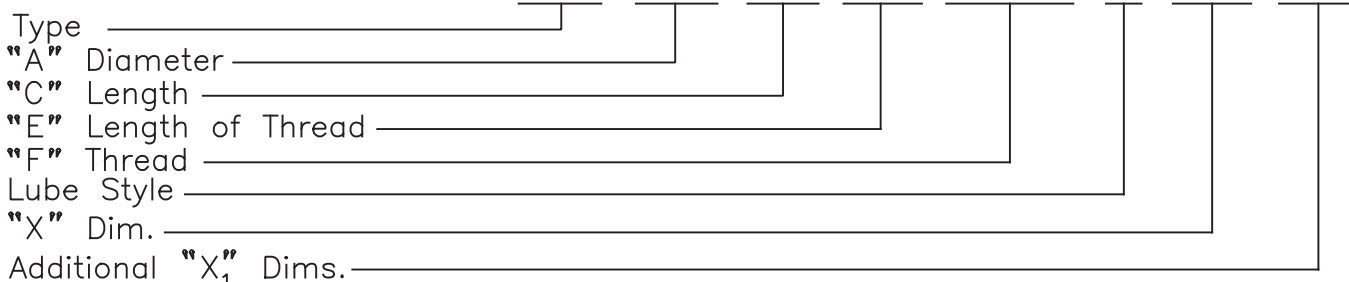
Material & Heat Treat

HHSH & HFSH 12L14 C.R.S., Carb., Hdn.& Gr., Rock."C" 55-60, .03 Min. Case.
 HHSA & HFSA Pre-heat treated Alloy, Rock. "C" 28-32 Uniform Throughout.
 HHSC & HFSC 1018 C.R.S.

Model Number Development

Detail Standard Shoulder Screw

HHSH-1.000-4.00-1.00-3/4-16-LA-2.00-



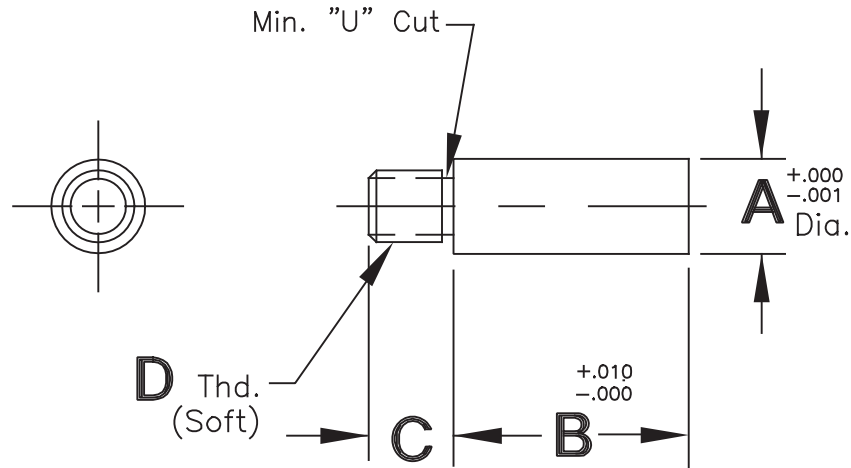
NOTE: All pins with lube holes are special items

To order this product METRIC, use "M" before the model number and millimeters for dimensions.
 Example: MHHSH-25-100-25-M18-2.5-LA-50

Detail Standard Co.

STANDOFF

Type STA H, STAA, STAT & STAC

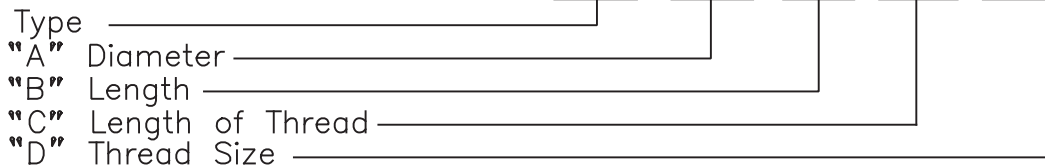


A Dia.	RECOMMENDED D THREAD		A Dia.	RECOMMENDED D THREAD	
	COARSE	FINE		COARSE	FINE
.312	1/4-20	1/4-28	.875	3/4-10	3/4-16
.375	5/16-18	5/16-24	1.000	3/4-10	3/4-16
.438	5/16-18	5/16-24	1.250	7/8-9	7/8-14
.500	3/8-16	3/8-24	1.500	1 1/8-7	1 1/8-12
.625	1/2-13	1/2-20	1.750	1 3/8-6	1 3/8-12
.750	5/8-11	5/8-18	2.000	1 1/2-6	1 1/2-12

Type	Material & Heat Treat
STA H	12L14 C.R.S., Carb., Hdn. & Gr., Rock. "C" 55-60, .03 Min. Case.
STAA	Turned, Ground & Polished, Rock. "C" 28-32 Uniform Throughout
STAT	1045 Turned, Ground & Polished.
STAC	1018 C.R.S.

Model Number Development

Detail Standard Standoff
STA H - 1.000 - 4.00 - 1.00 - 3/4 - 16



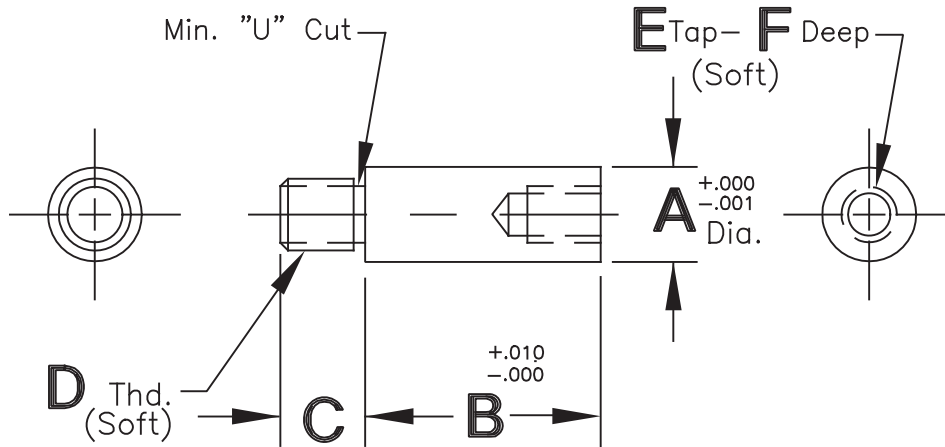
NOTE: All standoffs are "special" items

To order this product METRIC, use 'M' before the model number and millimeters for dimensions.
Example: MSTA H-25-100-25-M18-2.5

Detail Standard Co.

STANDOFF WITH END TAP

Type TTAH, TTAA, TTAT & TTAC



A Dia.	RECOMMENDED D THREAD		RECOMMENDED E THREAD	
	COARSE	FINE	COARSE	FINE
.312	1/4-20	1/4-28	#8-32	#8-36
.375	5/16-18	5/16-24	#10-24	#10-32
.438	5/16-18	5/16-24	#10-24	#10-32
.500	3/8-16	3/8-24	5/16-18	5/16-24
.625	1/2-13	1/2-20	1/4-20	1/4-28
.750	5/8-11	5/8-18	3/8-16	3/8-24
.875	3/4-10	3/4-16	3/8-16	3/8-24
1.000	3/4-10	3/4-16	1/2-13	1/2-20
1.250	7/8-9	7/8-14	1/2-13	1/2-20
1.500	1 1/8-7	1 1/8-12	5/8-11	5/8-18
1.750	1 3/8-6	1 3/8-12	5/8-11	5/8-18
2.000	1 1/2-6	1 1/2-12	3/4-10	3/4-16

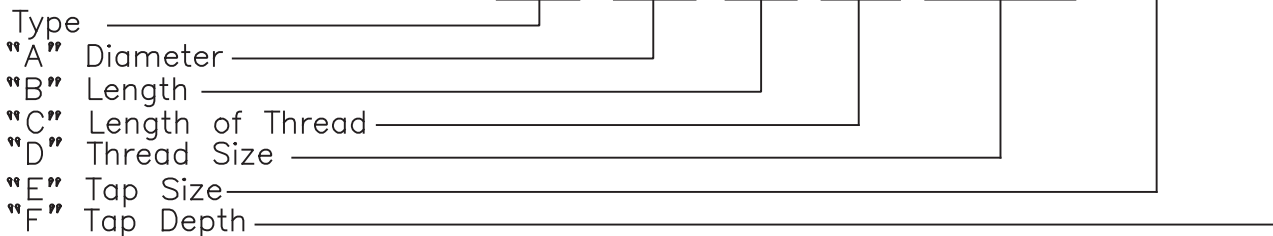
Type Material & Heat Treat

TTAH 12L14 C.R.S., Carb., Hdn.& Gr., Rock."C" 55-60, .03 Min. Case.
 TTAA Turned, Ground & Polished, Rock."C" 28-32 Uniform Throughout.
 TTAT 1045 Turned, Ground & Polished.
 TTAC 1018 C.R.S.

Model Number Development

Detail Standard Standoff with End Tap

TTAH-1.000-4.00-1.00-3/4-16-1/2-13-.62



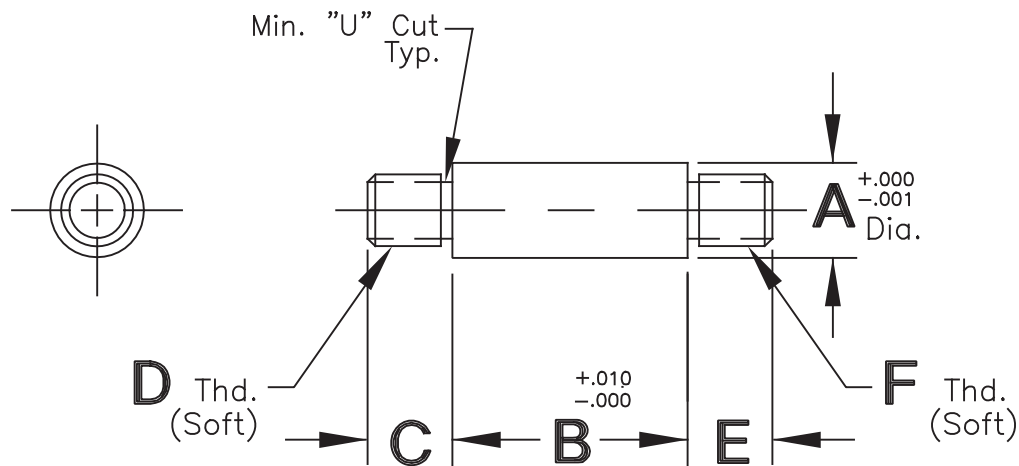
NOTE: All standoffs are "special" items

To order this product METRIC, use 'M' before the model number and millimeters for dimensions.
 Example: MTTAH-25-100-25-M18-2.5-M12-1.75-18

Detail Standard Co.

DOUBLE THREADED STANDOFFS

Type DTAH, DTAA, DTAT & DTAC



A Dia.	D THREAD		A Dia.	D THREAD	
	COARSE THREAD	FINE THREAD		COARSE THREAD	FINE THREAD
.312	1/4-20	1/4-28	.875	3/4-10	3/4-16
.375	5/16-18	5/16-24	1.000	3/4-10	3/4-16
.438	5/16-18	5/16-24	1.250	7/8-9	7/8-14
.500	3/8-16	3/8-24	1.500	1 1/8-7	1 1/8-12
.625	1/2-13	1/2-20	1.750	1 3/8-6	1 3/8-12
.750	5/8-11	5/8-18	2.000	1 1/2-6	1 1/2-12

Type	Material & Heat Treat
DTAH	12L14 C.R.S., Carb., Hdn.& Gr., Rock. "C" 55-60, .03 Min. Case.
DTAA	Turned, Ground & Polished, Rock. "C" 28-32 Uniform Throughout.
DTAT	1045 Turned, Ground & Polished.
DTAC	1018 C.R.S.

Model Number Development Detail Standard Standoff

DTAH - 1.000 - 4.00 - 1.00 - 3/4 - 16 - 1.25 - 5/8 - 11

Type _____

"A" Diameter _____

"B" Length _____

"C" Length of Thread _____

"D" Thread Size _____

"E" Length of Thread _____

"F" Thread Size _____

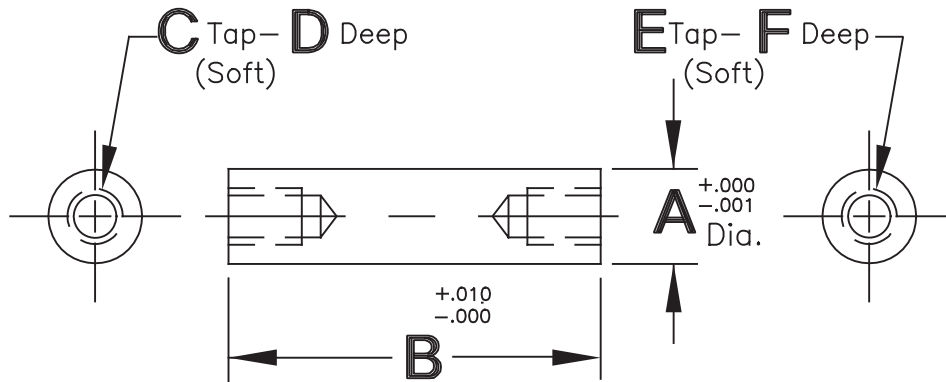
NOTE: All standoffs are "special" items

To order this product METRIC, use 'M' before the model number and millimeters for dimensions.
 Example: MDTAH-25-100-25-M20-2.5-32-M18-2.5

Detail Standard Co.

STANDOFF WITH BOTH ENDS TAPPED

Type ETAH, ETAA, ETAT & ETAC



A Dia.	RECOMMENDED C & E TAP		RECOMMENDED D & F DEPTH
	COARSE	FINE	
.312	#8-32	#8-36	.38
.375	#10-24	#10-32	.38
.438	#10-24	#10-32	.38
.500	5/16-18	5/16-24	.50
.625	1/4-20	1/4-28	.50
.750	3/8-16	3/8-24	.62
.875	3/8-16	3/8-24	.62
1.000	1/2-13	1/2-20	.75
1.250	1/2-13	1/2-20	.75
1.500	5/8-11	5/8-18	1.00
1.750	5/8-11	5/8-18	1.00
2.000	3/4-10	3/4-16	1.25

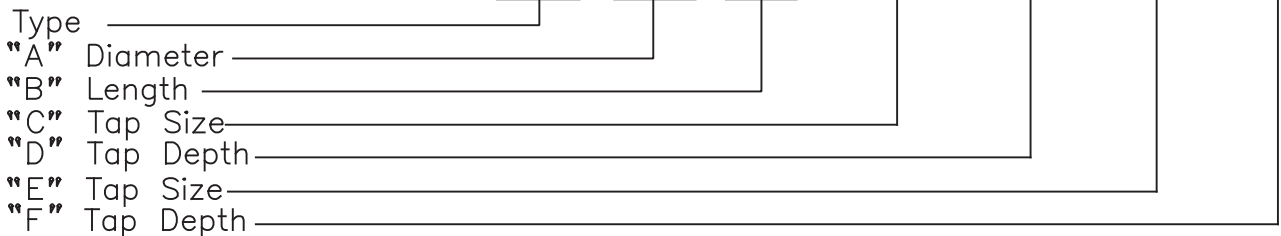
Type Material & Heat Treat

ETAH 12L14 C.R.S., Carb., Hdn.& Gr., Rock."C" 55-60, .03 Min. Case.
 ETAA Turned, Ground & Polished, Rock."C" 28-32 Uniform Throughout.
 ETAT 1045 Turned, Ground & Polished.
 ETAC 1018 C.R.S.

Model Number Development

Detail Standard Standoff with End Tap

ETAH - 1.000 - 4.00 - 3/4 - 16 - 1.00 - 1/2 - 13 - .62



NOTE: All standoffs are "special" items

To order this product METRIC, use 'M' before the model number and millimeters for dimensions.
 Example: METAH-25-100-M20-2.5-25-M12-1.75-18