

Detail Standard Co.

SECTION F

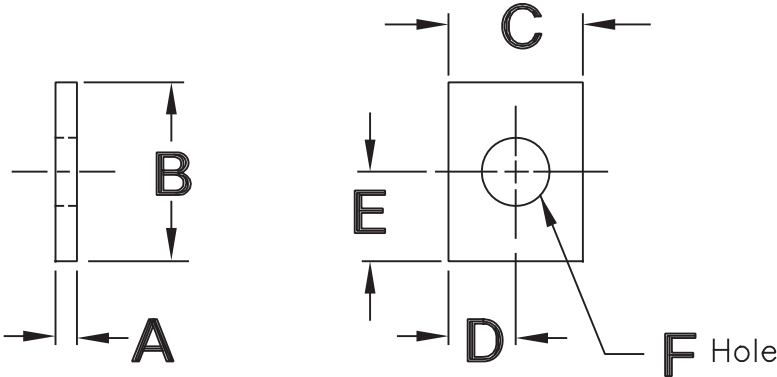
SPACERS, PLATES & PADS

Detail Standard Co.

SINGLE HOLE SHIM

Type SHS

**SEE PAGE F-6
FOR SLOTTED
STYLE**

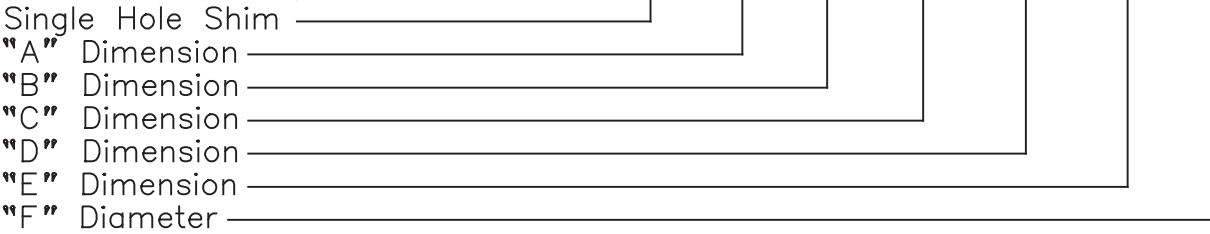


Part No.	A	B	C	D	E	F
SHS-101	.12	.75	.75	.38	.38	.28
SHS-102	.25	.75	.75	.38	.38	.28
SHS-103	.12	1.00	1.00	.50	.50	.41
SHS-104	.25	1.00	1.00	.50	.50	.41
SHS-105	.12	1.50	1.00	.50	.75	.41
SHS-106	.25	1.50	1.00	.50	.75	.41
SHS-107	.12	2.00	1.00	.50	1.00	.41
SHS-108	.25	2.00	1.00	.50	1.00	.41
SHS-109	.12	1.50	1.50	.75	.75	.41
SHS-110	.25	1.50	1.50	.75	.75	.41
SHS-111	.25	1.25	2.00	1.00	.62	.41
SHS-112	.25	2.00	2.00	1.00	1.00	.53
SHS-113	.25	1.00	3.00	1.50	.50	.53
SHS-114	.25	1.50	3.00	1.50	.75	.53
SHS-115	.25	2.00	3.00	1.50	1.00	.53

Material: 1018 C.R.S.
Finish: Black Oxide

Model Number Development
(For Special Sizes)

Detail Standard Single Hole Shim.
SHS - .25 - 2.00 - 3.00 - 1.50 - 1.00 - .53



NOTE: Sizes in chart above are standard. Other sizes may be ordered as "special" items, using "Model Number Development" format.

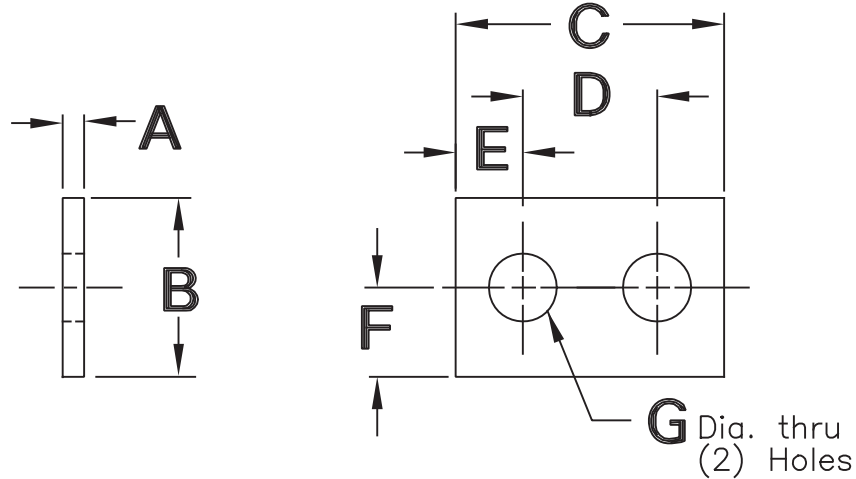
To order this product METRIC, use 'M' before the model number and millimeters for dimensions.
Example: MSHS-6-50-76-32-25-13

Detail Standard Co.

DOUBLE HOLE SHIM

Type DHS

SEE PAGE F-7
FOR SLOTTED
STYLE



Part No.	A	B	C	D	E	F	G
DHS-101	.12	.75	1.50	.750	.38	.38	.28
DHS-102	.12	1.00	2.00	1.250	.38	.50	.34
DHS-103	.25	1.00	2.50	1.500	.50	.50	.41
DHS-104	.25	1.00	3.00	2.000	.50	.50	.41
DHS-105	.25	1.50	3.00	2.000	.50	.75	.41
DHS-106	.25	1.25	3.50	2.500	.50	.62	.41
DHS-107	.25	2.00	3.50	2.500	.50	1.00	.41
DHS-108	.25	1.50	4.00	3.000	.50	.75	.41
DHS-109	.25	2.00	4.00	2.500	.75	1.00	.53
DHS-110	.25	1.50	4.50	3.000	.75	.75	.53
DHS-111	.25	2.00	4.50	3.000	.75	1.00	.68
DHS-112	.25	2.00	5.00	3.500	.75	1.00	.53
DHS-113	.38	3.00	5.00	3.000	1.00	1.50	.68
DHS-114	.25	3.50	6.00	4.750	.62	1.75	.53
DHS-115	.38	4.00	6.00	4.000	1.00	2.00	.68

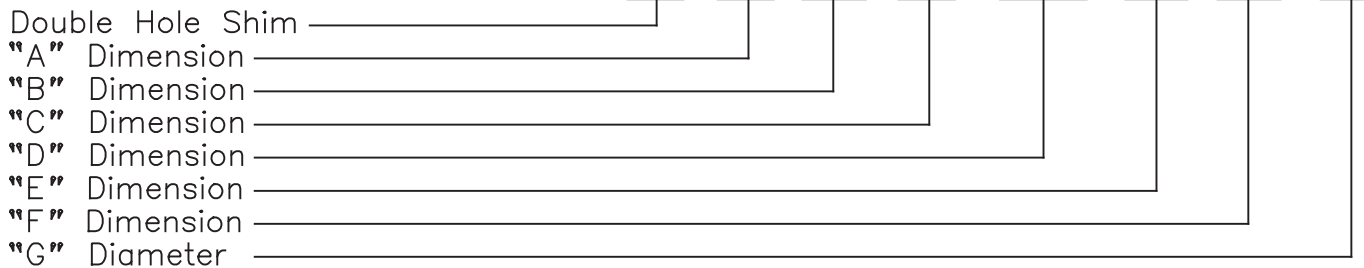
Material: 1018 C.R.S.

Finish: Black Oxide

Model Number Development
(For Special Sizes)

Detail Standard Double Hole Shim.

DHS - .38 - 4.00 - 6.00 - 4.000 - 1.00 - 2.00 - .68



NOTE: Sizes in chart above are standard. Other sizes may be ordered as "special" items, using "Model Number Development" format.

To order this product METRIC, use 'M' before the model number and millimeters for dimensions.

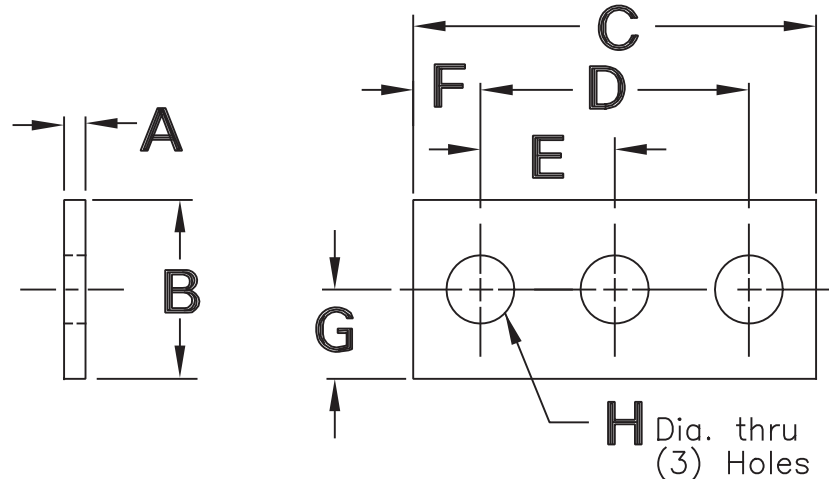
Example: MDHS-10-100-150-100-25-50-17

Detail Standard Co.

TRIPLE HOLE SHIM

Type THS

SEE PAGE F-8
FOR SLOTTED
STYLE



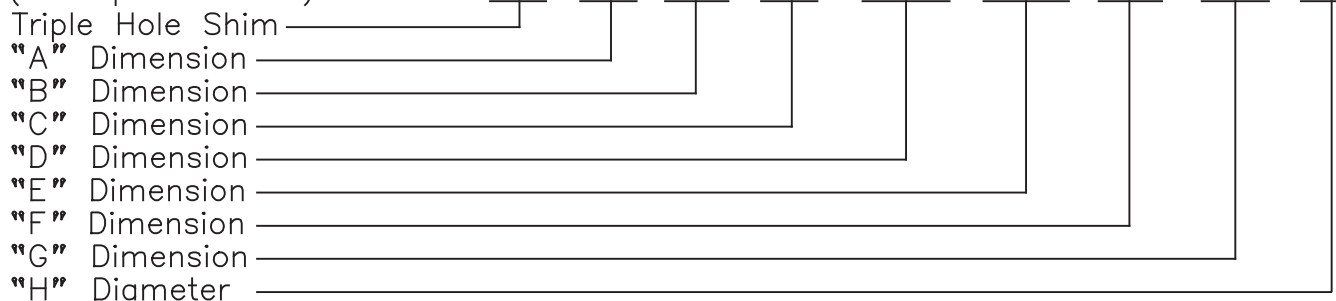
Part No.	A	B	C	D	E	F	G	H
THS-101	.12	.75	2.00	1.250	.625	.38	.38	.34
THS-102	.25	.75	2.00	1.250	.625	.38	.38	.34
THS-103	.12	1.00	2.50	1.500	.750	.50	.50	.34
THS-104	.25	1.00	2.50	1.500	.750	.50	.50	.34
THS-105	.25	1.25	3.00	2.000	1.000	.50	.62	.41
THS-106	.25	1.25	3.50	2.250	1.125	.62	.62	.41
THS-107	.25	1.50	3.00	2.000	1.000	.50	.75	.41
THS-108	.25	1.50	4.00	2.500	1.250	.75	.75	.53
THS-109	.25	2.00	4.00	3.000	1.500	.50	1.00	.41
THS-110	.25	2.00	4.00	2.500	1.250	.75	1.00	.53
THS-111	.25	2.00	5.00	3.500	1.750	.75	1.00	.53
THS-112	.25	2.50	5.00	3.500	1.750	.75	1.25	.53
THS-113	.38	2.50	5.00	3.500	1.750	.75	1.25	.68
THS-114	.25	3.00	6.00	4.000	2.000	1.00	1.50	.68
THS-115	.38	3.00	6.00	4.000	2.000	1.00	1.50	.81

Material: 1018 C.R.S.
Finish: Black Oxide

Model Number Development
(For Special Sizes)

Detail Standard Triple Hole Shim.

THS -.38- 3.00 -6.00- 4.000 -2.000- 1.00 -1.50- .81



NOTE: Sizes in chart above are standard. Other sizes may be ordered as "special" items, using "Model Number Development" format.

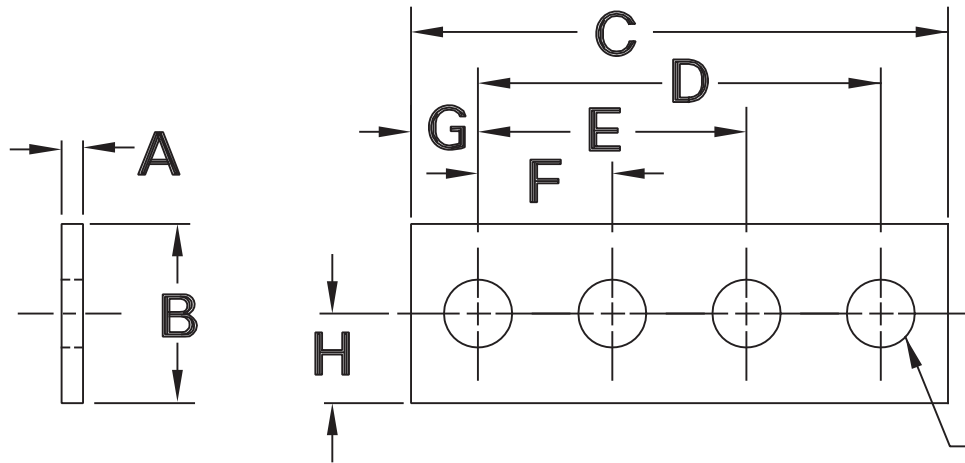
To order this product METRIC, use 'M' before the model number and millimeters for dimensions.
Example: MTHS-10-76-150-100-50-25-32-21

Detail Standard Co.

FOUR HOLE SHIM

Type QHSL

SEE PAGE F-9
FOR SLOTTED
STYLE



J Dia. thru
(4) Holes

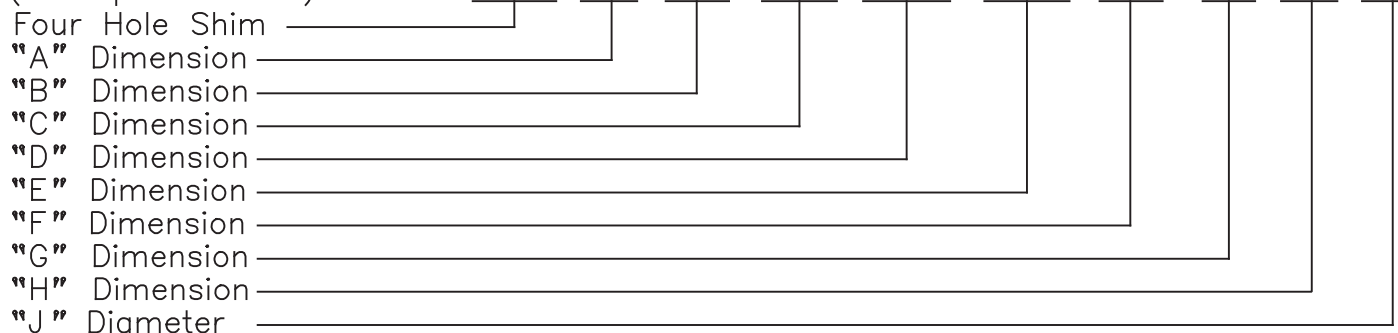
Part No.	A	B	C	D	E	F	G	H	J
QHSL-101	.12	.75	2.00	1.312	.875	.438	.34	.38	.28
QHSL-102	.25	.75	2.00	1.312	.875	.438	.34	.38	.28
QHSL-103	.12	1.00	2.50	1.500	1.000	.500	.50	.50	.34
QHSL-104	.25	1.00	2.50	1.500	1.000	.500	.50	.50	.34
QHSL-105	.25	1.25	3.00	1.750	1.250	.625	.62	.62	.41
QHSL-106	.25	1.25	3.50	2.250	1.500	.750	.62	.62	.41
QHSL-107	.25	1.50	3.00	1.750	1.250	.625	.50	.62	.41
QHSL-108	.25	1.50	4.00	2.625	1.750	.875	.68	.75	.53
QHSL-109	.25	2.00	4.00	3.000	2.000	1.000	.50	1.00	.41
QHSL-110	.25	2.00	4.00	2.625	1.750	.875	.68	1.00	.53
QHSL-111	.25	2.00	5.00	3.375	2.250	1.125	.81	1.00	.53
QHSL-112	.25	2.50	5.00	3.375	2.250	1.125	.81	1.25	.53
QHSL-113	.38	2.50	5.00	3.750	2.500	1.250	.62	1.25	.68
QHSL-114	.25	3.00	6.00	3.750	2.500	1.250	1.12	1.50	.68
QHSL-115	.38	3.00	6.00	3.750	2.500	1.250	1.12	1.50	.81

Material: 1018 C.R.S.
Finish: Black Oxide

Model Number Development

Detail Standard Four Hole Shim.

(For Special Sizes) QHSL-.25-1.25-6.00-4.500-3.500-1.00-.75-.62-.28



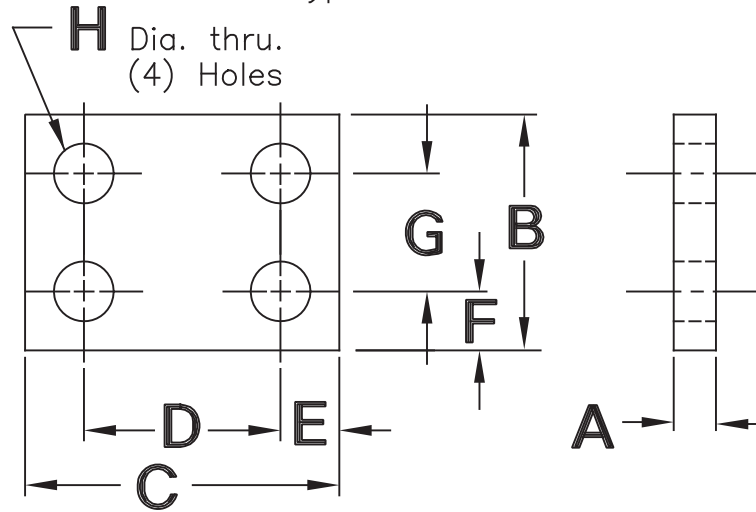
NOTE: Sizes in chart above are standard. Other sizes may be ordered as "special" items, using "Model Number Development" format.

To order this product METRIC, use 'M' before the model number and millimeters for dimensions.
Example: MQHSL-6-32-150-114-57-25-19-16-7

Detail Standard Co.

FOUR HOLE SHIM

Type QHS



Part No.	A	B	C	D	E	F	G	H
QHS-101	.12	1.50	1.50	.750	.38	.38	.750	.34
QHS-102	.25	1.50	1.50	.750	.38	.38	.750	.34
QHS-103	.12	1.50	2.00	1.250	.38	.38	.750	.34
QHS-104	.25	1.50	2.00	1.250	.38	.38	.750	.34
QHS-105	.12	2.00	3.50	2.000	.75	.56	.875	.34
QHS-106	.25	2.00	3.50	2.000	.75	.56	.875	.34
QHS-107	.12	2.25	3.25	2.500	.38	.38	1.500	.41
QHS-108	.38	2.25	3.25	2.500	.38	.38	1.500	.41
QHS-109	.25	3.00	5.00	4.000	.50	.50	2.000	.41
QHS-110	.25	3.00	6.00	5.000	.50	.50	2.000	.41
QHS-111	.25	3.50	6.00	5.000	.50	.50	2.500	.41
QHS-112	.25	3.50	6.00	4.750	.62	.62	2.250	.53
QHS-113	.50	3.50	6.00	4.750	.62	.62	2.250	.53
QHS-114	.25	4.00	7.00	5.750	.62	.62	2.750	.53
QHS-115	.50	4.00	8.00	6.500	.75	.75	2.500	.68

Material: 1018 C.R.S.

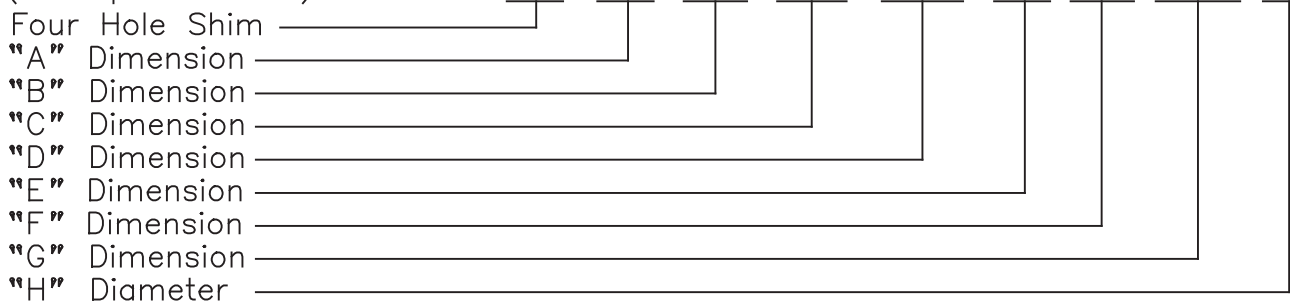
Finish: Black Oxide

Model Number Development

Detail Standard Four Hole Shim.

(For Special Sizes)

QHS-.50-4.00-8.00-6.500-.75-.75-2.500-.68



NOTE: Sizes in chart above are standard. Other sizes may be ordered as "special" items, using "Model Number Development" format.

To order this product METRIC, use 'M' before the model number and millimeters for dimensions.

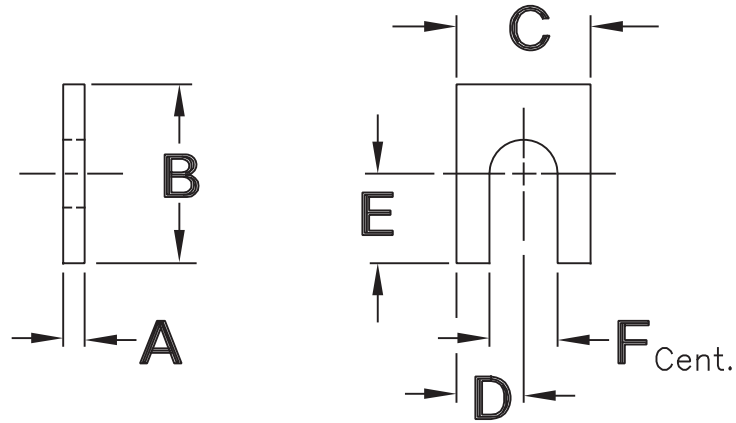
Example: MQHS-12-100-200-160-20-20-60-17

Detail Standard Co.

SINGLE SLOTTED SHIM

Type SLS

SEE PAGE F-1
FOR HOLE STYLE

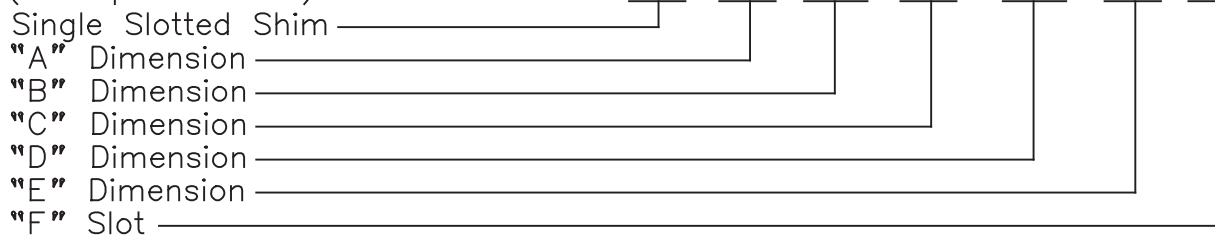


Part No.	A	B	C	D	E	F
SLS-101	.12	.75	.75	.38	.38	.28
SLS-102	.25	.75	.75	.38	.38	.28
SLS-103	.12	1.00	1.00	.50	.50	.41
SLS-104	.25	1.00	1.00	.50	.50	.41
SLS-105	.12	1.50	1.00	.50	.75	.41
SLS-106	.25	1.50	1.00	.50	.75	.41
SLS-107	.12	2.00	1.00	.50	1.00	.41
SLS-108	.25	2.00	1.00	.50	1.00	.41
SLS-109	.12	1.50	1.50	.75	.75	.41
SLS-110	.25	1.50	1.50	.75	.75	.41
SLS-111	.25	1.25	2.00	1.00	.62	.41
SLS-112	.25	2.00	2.00	1.00	1.00	.53
SLS-113	.25	1.00	3.00	1.50	.50	.53
SLS-114	.25	1.50	3.00	1.50	.75	.53
SLS-115	.25	2.00	3.00	1.50	1.00	.53

Material: 1018 C.R.S.
Finish: Black Oxide

Model Number Development
(For Special Sizes)

Detail Standard Single Slotted Shim.
SLS - .25 - 2.00 - 3.00 - 1.50 - 1.00 - .53



NOTE: Sizes in chart above are standard. Other sizes may be ordered as "special" items, using "Model Number Development" format.

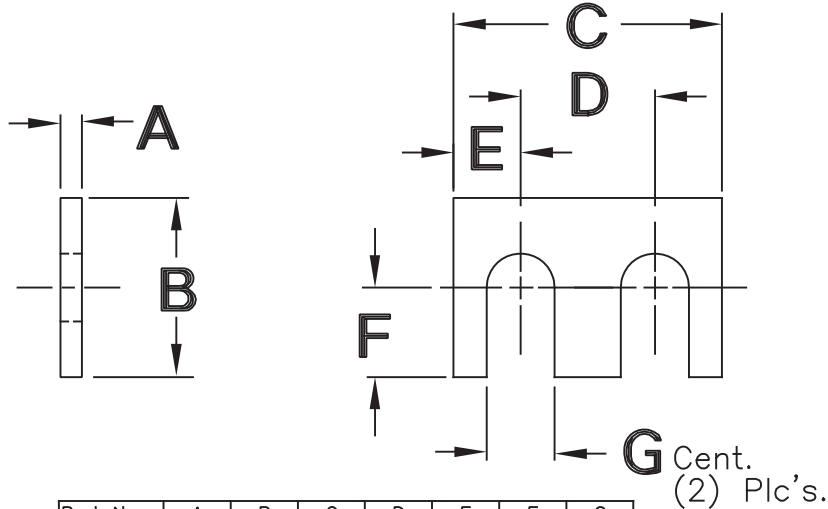
To order this product METRIC, use 'M' before the model number and millimeters for dimensions.
Example: MSLS-6-50-76-32-25-13

Detail Standard Co.

DOUBLE SLOTTED SHIM

Type DSLS

SEE PAGE F-2
FOR HOLE STYLE



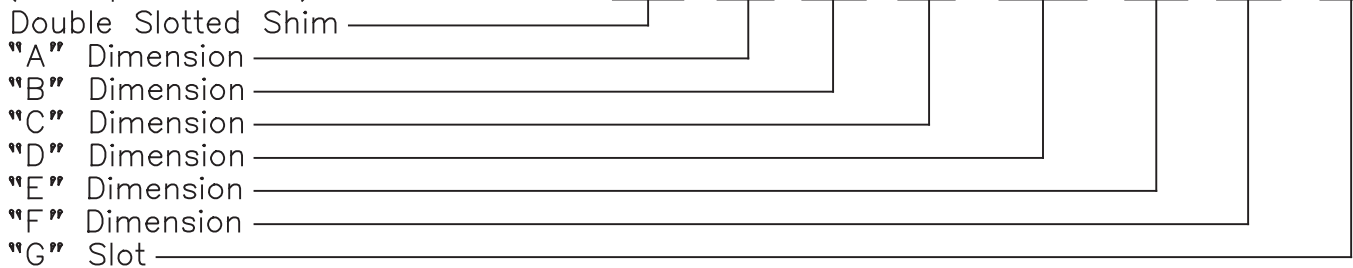
Part No.	A	B	C	D	E	F	G
DSLS-101	.12	.75	1.50	.750	.38	.38	.28
DSLS-102	.12	1.00	2.00	1.250	.38	.50	.34
DSLS-103	.25	1.00	2.50	1.500	.50	.50	.41
DSLS-104	.25	1.00	3.00	2.000	.50	.50	.41
DSLS-105	.25	1.50	3.00	2.000	.50	.75	.41
DSLS-106	.25	1.25	3.50	2.500	.50	.62	.41
DSLS-107	.25	2.00	3.50	2.500	.50	1.00	.41
DSLS-108	.25	1.50	4.00	3.000	.50	.75	.41
DSLS-109	.25	2.00	4.00	2.500	.75	1.00	.53
DSLS-110	.25	1.50	4.50	3.000	.75	.75	.53
DSLS-111	.25	2.00	4.50	3.000	.75	1.00	.68
DSLS-112	.25	2.00	5.00	3.500	.75	1.00	.53
DSLS-113	.38	3.00	5.00	3.000	1.00	1.50	.68
DSLS-114	.25	3.50	6.00	4.750	.62	1.75	.53
DSLS-115	.38	4.00	6.00	4.000	1.00	2.00	.68

Material: 1018 C.R.S.
Finish: Black Oxide

Model Number Development
(For Special Sizes)

Detail Standard Double Slotted Shim.

DSLS - .38 - 4.00 - 6.00 - 4.000 - 1.00 - 2.00 - .68



NOTE: Sizes in chart above are standard. Other sizes may be ordered as "special" items, using "Model Number Development" format.

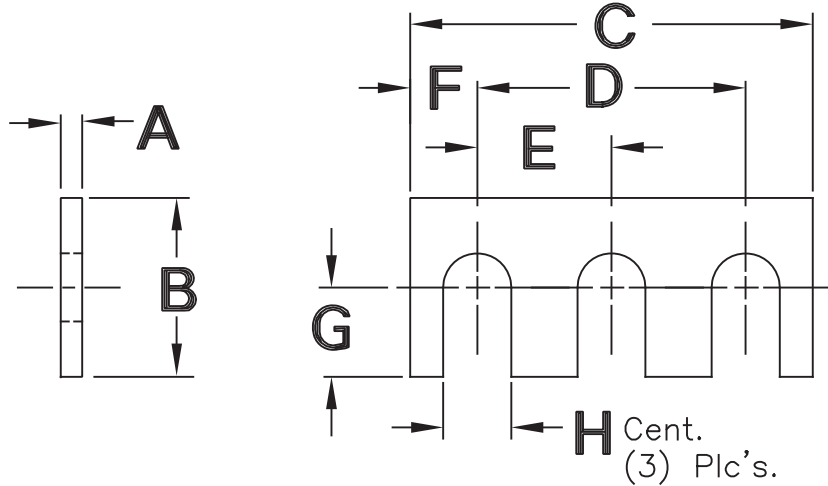
To order this product METRIC, use 'M' before the model number and millimeters for dimensions.
Example: MDSLS-10-100-150-100-25-50-17

Detail Standard Co.

TRIPLE SLOTTED SHIM

Type TSLS

SEE PAGE F-3
FOR HOLE STYLE

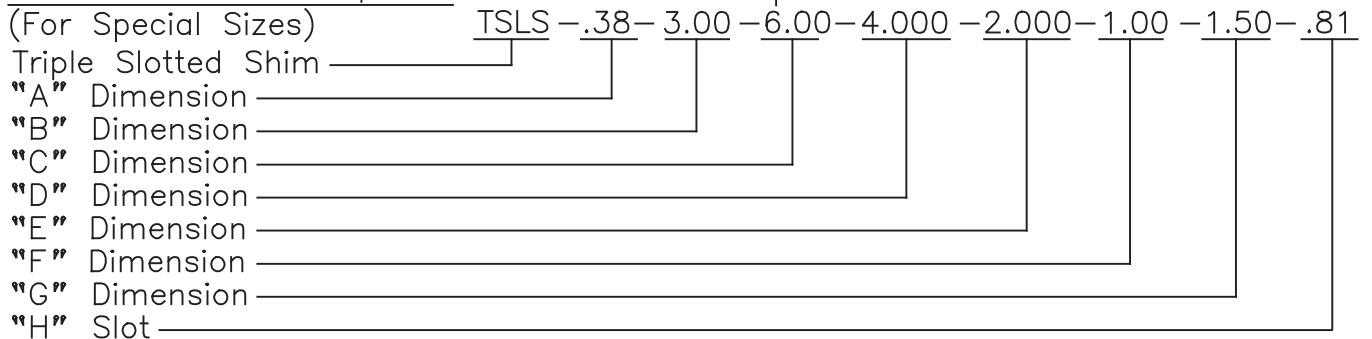


Part No.	A	B	C	D	E	F	G	H
TSLS-101	.12	.75	2.00	1.250	.625	.38	.38	.34
TSLS-102	.25	.75	2.00	1.250	.625	.38	.38	.34
TSLS-103	.12	1.00	2.50	1.500	.750	.50	.50	.34
TSLS-104	.25	1.00	2.50	1.500	.750	.50	.50	.34
TSLS-105	.25	1.25	3.00	2.000	1.000	.50	.62	.41
TSLS-106	.25	1.25	3.50	2.250	1.125	.62	.62	.41
TSLS-107	.25	1.50	3.00	2.000	1.000	.50	.75	.41
TSLS-108	.25	1.50	4.00	2.500	1.250	.75	.75	.53
TSLS-109	.25	2.00	4.00	3.000	1.500	.50	1.00	.41
TSLS-110	.25	2.00	4.00	2.500	1.250	.75	1.00	.53
TSLS-111	.25	2.00	5.00	3.500	1.750	.75	1.00	.53
TSLS-112	.25	2.50	5.00	3.500	1.750	.75	1.25	.53
TSLS-113	.38	2.50	5.00	3.500	1.750	.75	1.25	.68
TSLS-114	.25	3.00	6.00	4.000	2.000	1.00	1.50	.68
TSLS-115	.38	3.00	6.00	4.000	2.000	1.00	1.50	.81

Material: 1018 C.R.S.

Finish: Black Oxide

Model Number Development Detail Standard Triple Slotted Shim.



NOTE: Sizes in chart above are standard. Other sizes may be ordered as "special" items, using "Model Number Development" format.

To order this product METRIC, use 'M' before the model number and millimeters for dimensions.

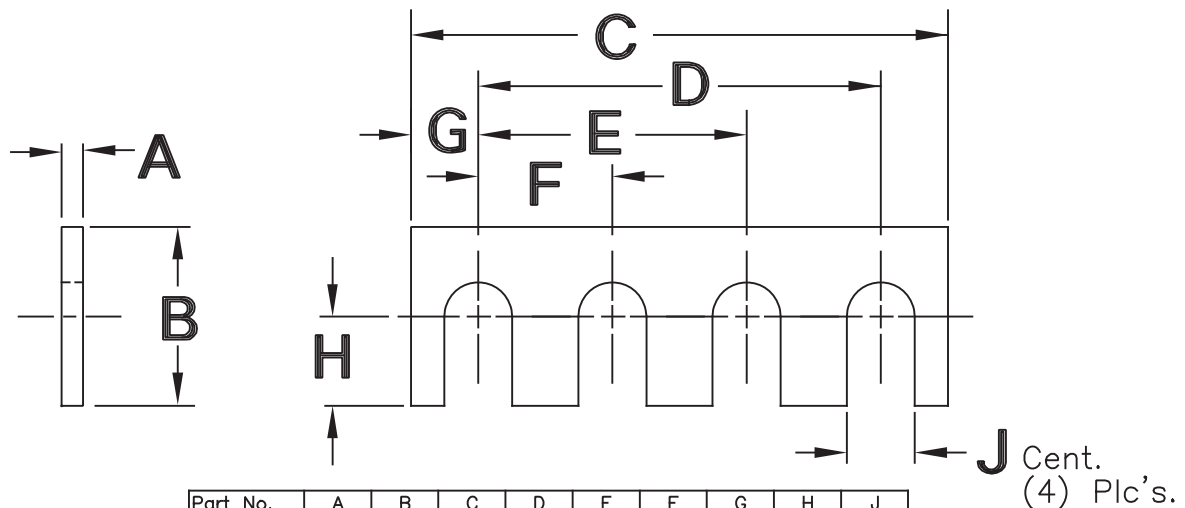
Example: MTSL-10-76-150-100-50-25-32-21

Detail Standard Co.

FOUR SLOTTED SHIM

SEE PAGE F-4
FOR HOLE STYLE

Type QSLS

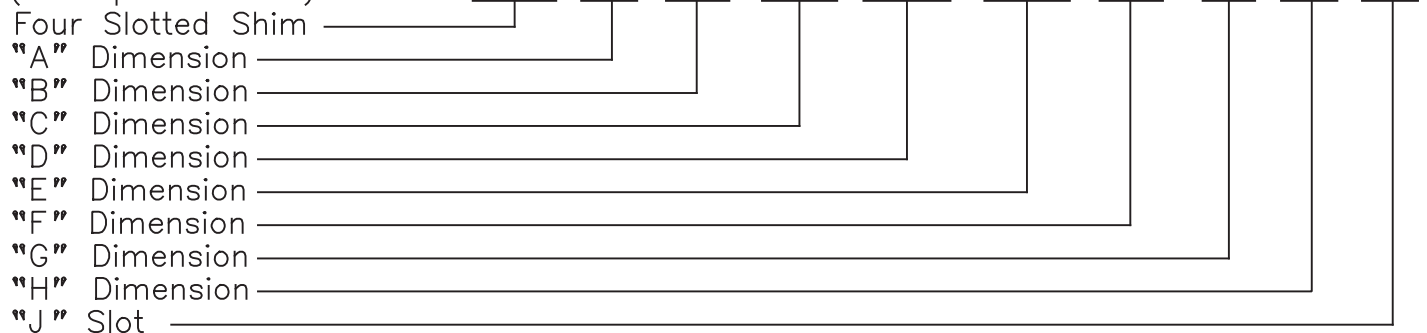


Part No.	A	B	C	D	E	F	G	H	J
QSLS-101	.12	.75	2.00	1.312	.875	.438	.34	.38	.28
QSLS-102	.25	.75	2.00	1.312	.875	.438	.34	.38	.28
QSLS-103	.12	1.00	2.50	1.500	1.000	.500	.50	.50	.34
QSLS-104	.25	1.00	2.50	1.500	1.000	.500	.50	.50	.34
QSLS-105	.25	1.25	3.00	1.750	1.250	.625	.62	.62	.41
QSLS-106	.25	1.25	3.50	2.250	1.500	.750	.62	.62	.41
QSLS-107	.25	1.50	3.00	1.750	1.250	.625	.50	.62	.41
QSLS-108	.25	1.50	4.00	2.625	1.750	.875	.68	.75	.53
QSLS-109	.25	2.00	4.00	3.000	2.000	1.000	.50	1.00	.41
QSLS-110	.25	2.00	4.00	2.625	1.750	.875	.68	1.00	.53
QSLS-111	.25	2.00	5.00	3.375	2.250	1.125	.81	1.00	.53
QSLS-112	.25	2.50	5.00	3.375	2.250	1.125	.81	1.25	.53
QSLS-113	.38	2.50	5.00	3.750	2.500	1.250	.62	1.25	.68
QSLS-114	.25	3.00	6.00	3.750	2.500	1.250	1.12	1.50	.68
QSLS-115	.38	3.00	6.00	3.750	2.500	1.250	1.12	1.50	.81

Material: 1018 C.R.S.
Finish: Black Oxide

Model Number Development Detail Standard Four Slotted Shim.

(For Special Sizes) QSLS - .25 - 1.25 - 6.00 - 4.500 - 3.500 - 1.00 - .75 - .62 - .28



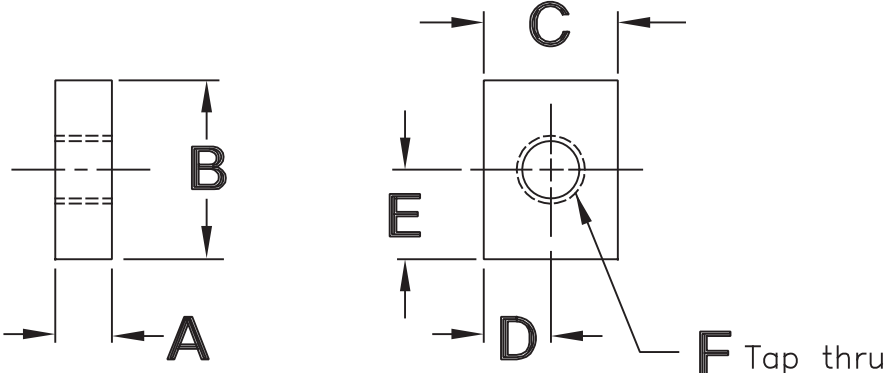
NOTE: Sizes in chart above are standard. Other sizes may be ordered as "special" items, using "Model Number Development" format.

To order this product METRIC, use 'M' before the model number and millimeters for dimensions.
Example: MQSLS-6-32-150-114-57-25-19-16-7

Detail Standard Co.

SINGLE HOLE TAP PAD

Type STP



Part No.	A	B	C	D	E	F
STP-101	.25	.75	.75	.38	.38	1/4-20
STP-102	.38	.75	.75	.38	.38	1/4-20
STP-103	.38	1.00	1.00	.50	.50	3/8-16
STP-104	.50	1.00	1.00	.50	.50	3/8-16
STP-105	.38	1.50	1.00	.50	.75	3/8-16
STP-106	.50	1.50	1.00	.50	.75	3/8-16
STP-107	.38	2.00	1.00	.50	1.00	3/8-16
STP-108	.50	2.00	1.00	.50	1.00	3/8-16
STP-109	.38	1.50	1.50	.75	.75	3/8-16
STP-110	.50	1.50	1.50	.75	.75	3/8-16
STP-111	.50	1.25	2.00	1.00	.62	3/8-16
STP-112	.75	2.00	2.00	1.00	1.00	1/2-13
STP-113	.75	1.00	3.00	1.50	.50	1/2-13
STP-114	.75	1.50	3.00	1.50	.75	1/2-13
STP-115	.75	2.00	3.00	1.50	1.00	1/2-13

Material: 1018 C.R.S.
 Finish: Black Oxide

Model Number Development (For Special Sizes) _____

Detail Standard Single Hole Tap Pad
 STP .75 - 2.00 - 3.00 - 1.50 - 1.00 - 1/2-13

Single Hole Tap Pad _____

"A" Dimension _____

"B" Dimension _____

"C" Dimension _____

"D" Dimension _____

"E" Dimension _____

"F" Tap _____

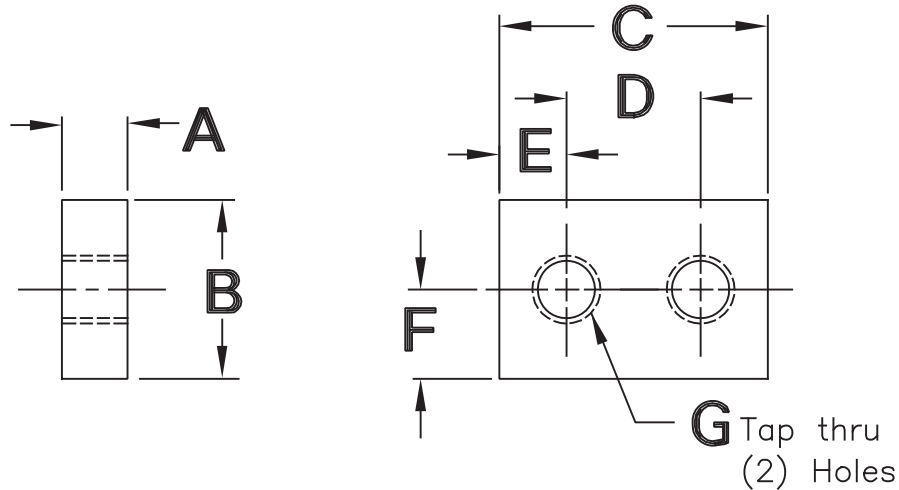
NOTE: Sizes in chart above are standard. Other sizes may be ordered as "special" items, using "Model Number Development" format.

To order this product METRIC, use 'M' before the model number and millimeters for dimensions.
 Example: MSTP-20-50-76-32-25-M12-1.75

Detail Standard Co.

DOUBLE HOLE TAP PAD

Type DTP



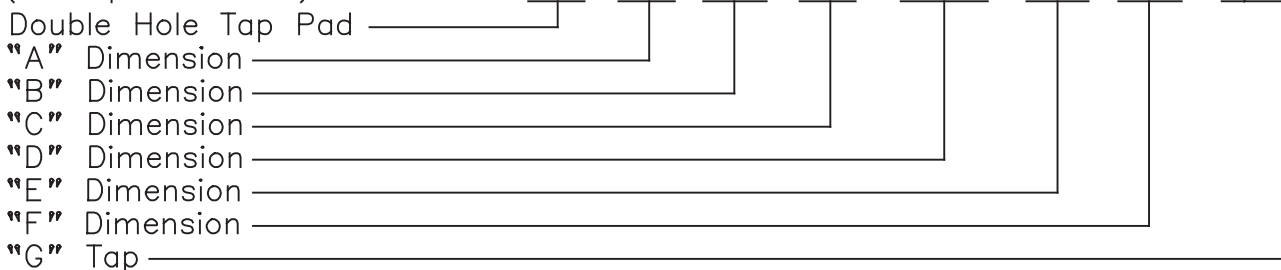
Part No.	A	B	C	D	E	F	G
DTP-101	.38	.75	1.50	.750	.38	.38	1/4-20
DTP-102	.50	1.00	2.00	1.250	.38	.50	5/16-18
DTP-103	.50	1.00	2.50	1.500	.50	.50	3/8-16
DTP-104	.50	1.00	3.00	2.000	.50	.50	3/8-16
DTP-105	.50	1.50	3.00	2.000	.50	.75	3/8-16
DTP-106	.50	1.25	3.50	2.500	.50	.62	3/8-16
DTP-107	.75	2.00	3.50	2.500	.50	1.00	3/8-16
DTP-108	.50	1.50	4.00	3.000	.50	.75	3/8-16
DTP-109	.75	2.00	4.00	2.500	.75	1.00	1/2-13
DTP-110	.62	1.50	4.50	3.000	.75	.75	1/2-13
DTP-111	.75	2.00	4.50	3.000	.75	1.00	5/8-11
DTP-112	.62	2.00	5.00	3.500	.75	1.00	1/2-13
DTP-113	.75	3.00	5.00	3.000	1.00	1.50	5/8-11
DTP-114	.62	3.50	6.00	4.750	.62	1.75	1/2-13
DTP-115	.75	4.00	6.00	4.000	1.00	2.00	5/8-11

Material: 1018 C.R.S.
Finish: Black Oxide

Model Number Development
(For Special Sizes)

Detail Standard Double Hole Tap Pad.

DTP -.75- 4.00 -6.00- 4.000 -1.00- 2.00 -5/8-11



NOTE: Sizes in chart above are standard. Other sizes may be ordered as "special" items, using "Model Number Development" format.

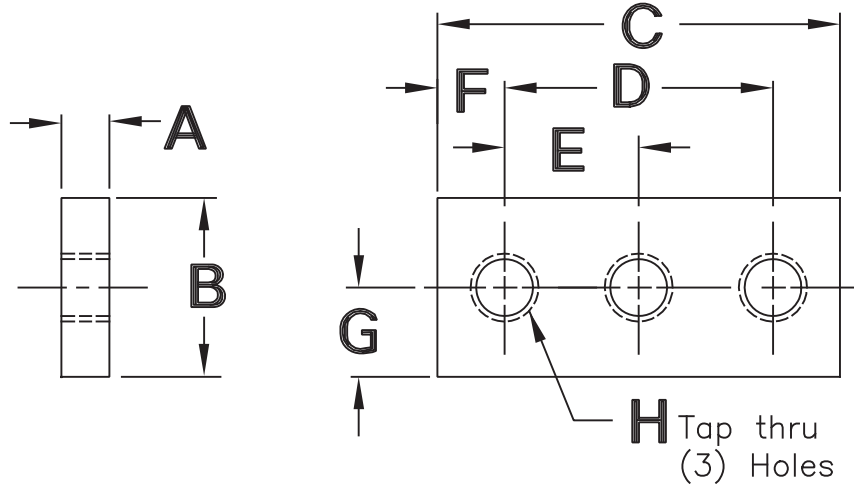
To order this product METRIC, use 'M' before the model number and millimeters for dimensions.

Example: MDTP-20-100-150-100-25-50-M16-2

Detail Standard Co.

TRIPLE HOLE TAP PAD

Type TTP



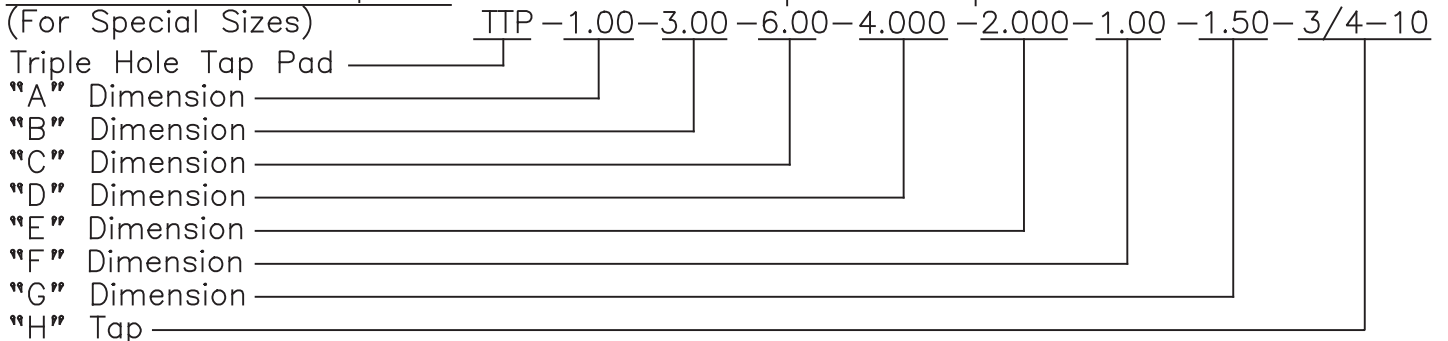
Part No.	A	B	C	D	E	F	G	H
TTP-101	.38	.75	2.00	1.250	.625	.38	.38	5/16-18
TTP-102	.50	.75	2.00	1.250	.625	.38	.38	5/16-18
TTP-103	.38	1.00	2.50	1.500	.750	.50	.50	5/16-18
TTP-104	.50	1.00	2.50	1.500	.750	.50	.50	5/16-18
TTP-105	.50	1.25	3.00	2.000	1.000	.50	.62	3/8-16
TTP-106	.50	1.25	3.50	2.250	1.125	.62	.62	3/8-16
TTP-107	.50	1.50	3.00	2.000	1.000	.50	.75	3/8-16
TTP-108	.75	1.50	4.00	2.500	1.250	.75	.75	1/2-13
TTP-109	.50	2.00	4.00	3.000	1.500	.50	1.00	3/8-16
TTP-110	.75	2.00	4.00	2.500	1.250	.75	1.00	1/2-13
TTP-111	.75	2.00	5.00	3.500	1.750	.75	1.00	1/2-13
TTP-112	.75	2.50	5.00	3.500	1.750	.75	1.25	1/2-13
TTP-113	.75	2.50	5.00	3.500	1.750	.75	1.25	5/8-11
TTP-114	1.00	3.00	6.00	4.000	2.000	1.00	1.50	5/8-11
TTP-115	1.00	3.00	6.00	4.000	2.000	1.00	1.50	3/4-10

Material: 1018 C.R.S.

Finish: Black Oxide

Model Number Development
(For Special Sizes)

Detail Standard Triple Hole Tap Pad.



NOTE: Sizes in chart above are standard. Other sizes may be ordered as "special" items, using "Model Number Development" format.

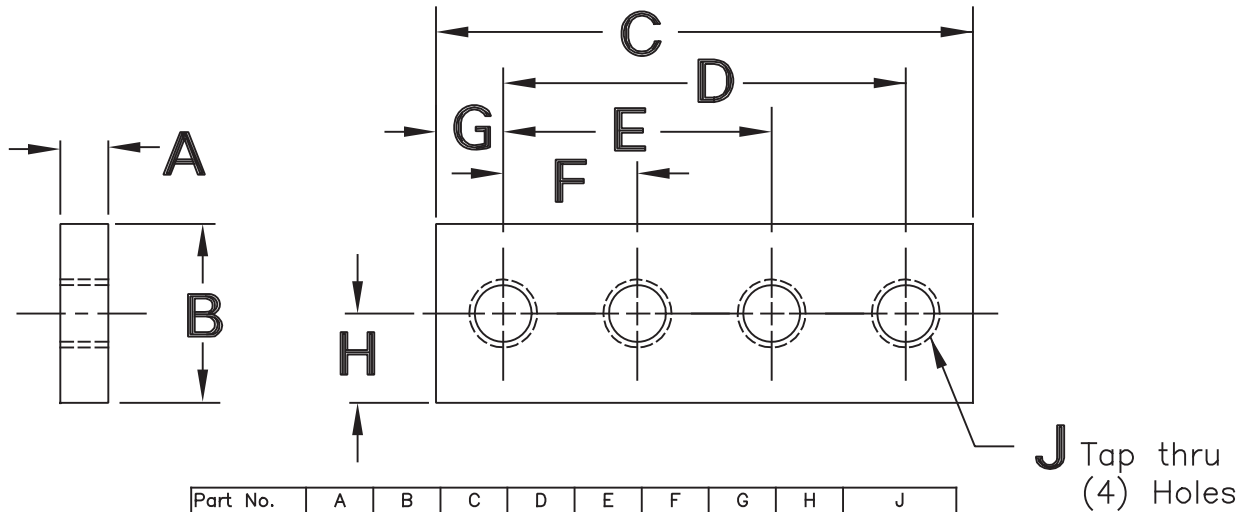
To order this product METRIC, use 'M' before the model number and millimeters for dimensions.

Example: MTP-25-76-150-100-50-25-32-M20-2.5

Detail Standard Co.

FOUR HOLE TAP PAD

Type QTPL



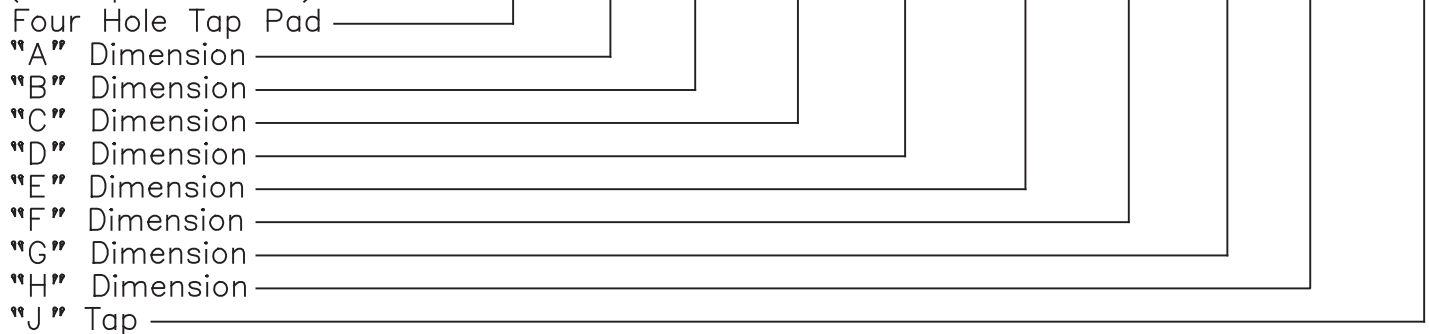
Part No.	A	B	C	D	E	F	G	H	J
QTPL-101	.38	.75	2.00	1.312	.875	.438	.34	.38	1/4-20
QTPL-102	.50	.75	2.00	1.312	.875	.438	.34	.38	1/4-20
QTPL-103	.38	1.00	2.50	1.500	1.000	.500	.50	.50	5/16-18
QTPL-104	.50	1.00	2.50	1.500	1.000	.500	.50	.50	5/16-18
QTPL-105	.50	1.25	3.00	1.750	1.250	.625	.62	.62	3/8-16
QTPL-106	.50	1.25	3.50	2.250	1.500	.750	.62	.62	3/8-16
QTPL-107	.50	1.50	3.00	1.750	1.250	.625	.50	.62	3/8-16
QTPL-108	.75	1.50	4.00	2.625	1.750	.875	.68	.75	1/2-13
QTPL-109	.50	2.00	4.00	3.000	2.000	1.000	.50	1.00	3/8-16
QTPL-110	.75	2.00	4.00	2.625	1.750	.875	.68	1.00	1/2-13
QTPL-111	.75	2.00	5.00	3.375	2.250	1.125	.81	1.00	1/2-13
QTPL-112	.75	2.50	5.00	3.375	2.250	1.125	.81	1.25	1/2-13
QTPL-113	.75	2.50	5.00	3.750	2.500	1.250	.62	1.25	5/8-11
QTPL-114	1.00	3.00	6.00	3.750	2.500	1.250	1.12	1.50	5/8-11
QTPL-115	1.00	3.00	6.00	3.750	2.500	1.250	1.12	1.50	3/4-10

Material: 1018 C.R.S.
Finish: Black Oxide

Model Number Development

Detail Standard Four Hole Shim.

(For Special Sizes) QTPL - .25 - 1.25 - 6.00 - 4.500 - 3.500 - 1.00 - .75 - .62 - 1/4-20



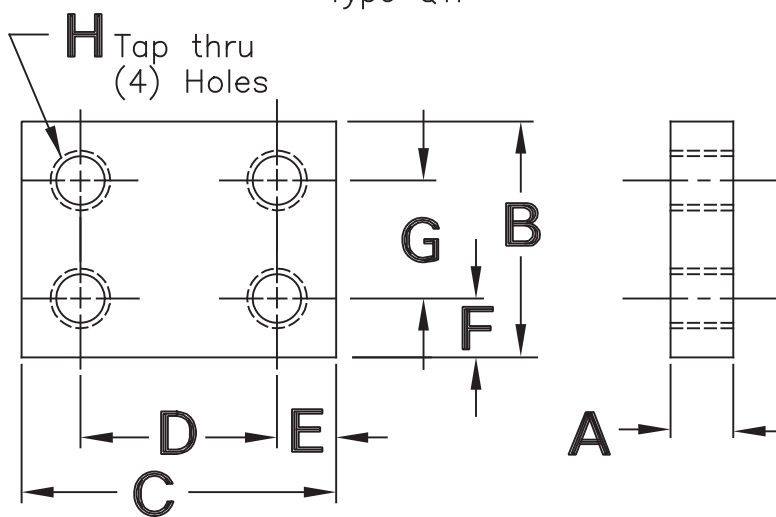
NOTE: Sizes in chart above are standard. Other sizes may be ordered as "special" items, using "Model Number Development" format.

To order this product METRIC, use 'M' before the model number and millimeters for dimensions.
Example: MQTPL-12-32-150-114-57-25-19-16-M12-1.75

Detail Standard Co.

FOUR HOLE TAP PAD

Type QTP



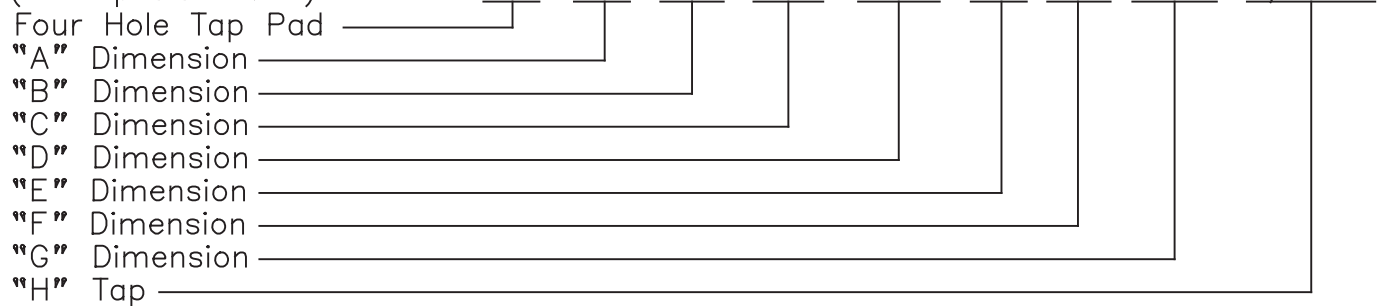
Part No.	A	B	C	D	E	F	G	H
QTP-101	.38	1.50	1.50	.750	.38	.38	.750	5/16-18
QTP-102	.50	1.50	1.50	.750	.38	.38	.750	5/16-18
QTP-103	.38	1.50	2.00	1.250	.38	.38	.750	5/16-18
QTP-104	.50	1.50	2.00	1.250	.38	.38	.750	5/16-18
QTP-105	.38	2.00	3.50	2.000	.75	.56	.875	5/16-18
QTP-106	.50	2.00	3.50	2.000	.75	.56	.875	5/16-18
QTP-107	.50	2.25	3.25	2.500	.38	.38	1.500	3/8-16
QTP-108	.75	2.25	3.25	2.500	.38	.38	1.500	3/8-16
QTP-109	.50	3.00	5.00	4.000	.50	.50	2.000	3/8-16
QTP-110	.50	3.00	6.00	5.000	.50	.50	2.000	3/8-16
QTP-111	.50	3.50	6.00	5.000	.50	.50	2.500	3/8-16
QTP-112	.75	3.50	6.00	4.750	.62	.62	2.250	1/2-13
QTP-113	1.00	3.50	6.00	4.750	.62	.62	2.250	1/2-13
QTP-114	.75	4.00	7.00	5.750	.62	.62	2.750	1/2-13
QTP-115	.75	4.00	8.00	6.500	.75	.75	2.500	5/8-11

Material: 1018 C.R.S.

Finish: Black Oxide

Model Number Development Detail Standard Four Hole Tap Pad

(For Special Sizes)



NOTE: Sizes in chart above are standard. Other sizes may be ordered as "special" items, using "Model Number Development" format.

To order this product METRIC, use 'M' before the model number and millimeters for dimensions.
Example: MQTP-20-100-200-160-20-20-60-M14-2