

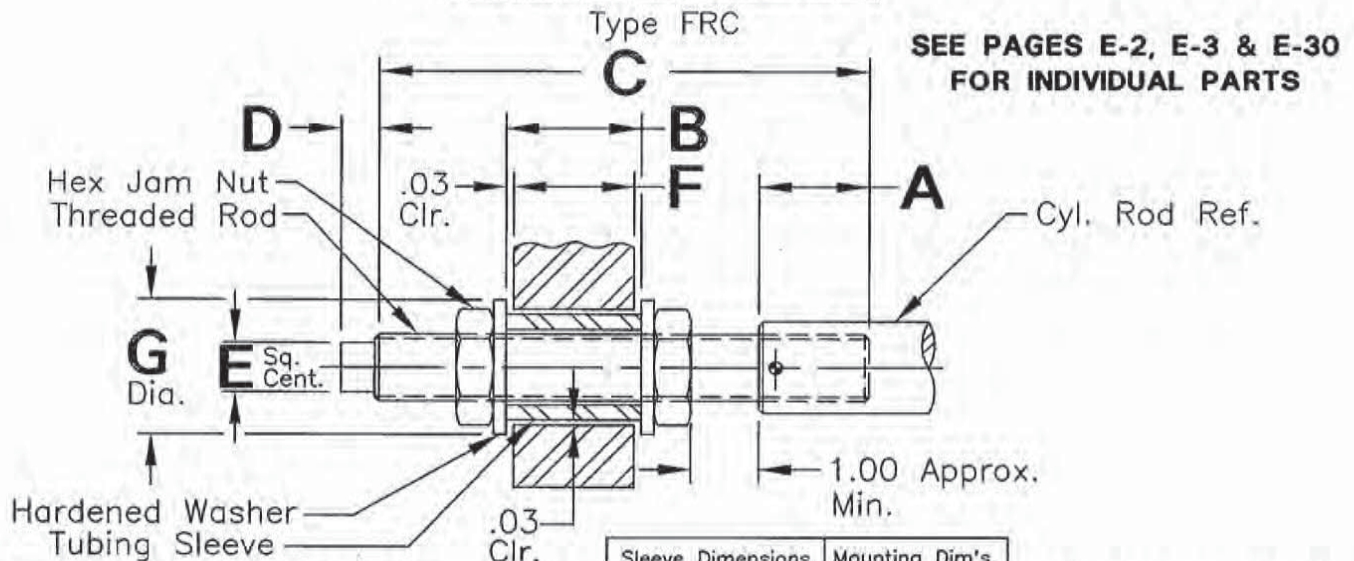
Detail Standard Co.

SECTION G

AUTOMATION COMPONENTS

Detail Standard Co.

FLOATING ROD COUPLER



Part No.	Cyl. Rod.	Thread Size	A	Washer No.	G	Sleeve Dimensions.			Mounting Dim's.			CAD FILE NO.		
						O.D.	I.D.	B	Hole Dia.	F	C		D	E
FRC-101	.500	5/16-24	.625	HW-101	.88	.750	.375	.562	.81	.50	4.00	.18	.18	FRC101
FRC-102	N/A	3/8-16	N/A	HW-102	1.00	.812	.438	.687	.88	.62	5.00	.25	.25	FRC102
FRC-103	.625	7/16-20	.750	HW-103	1.12	.875	.500	.812	.94	.75	5.00	.25	.31	FRC103
FRC-104	N/A	1/2-13	N/A	HW-106	1.25	.938	.562	1.062	1.00	1.00	6.00	.31	.38	FRC104
FRC-105	N/A	1/2-20	N/A	HW-106	1.25	.938	.562	1.062	1.00	1.00	6.00	.31	.38	FRC105
FRC-106	N/A	5/8-11	N/A	HW-114	1.50	1.125	.688	1.062	1.18	1.00	6.00	.38	.50	FRC106
FRC-107	N/A	5/8-18	N/A	HW-114	1.50	1.125	.688	1.062	1.18	1.00	6.00	.38	.50	FRC107
FRC-108	1.000	3/4-16	1.125	HW-120	1.62	1.250	.812	1.312	1.32	1.25	6.00	.50	.62	FRC108
FRC-109	1.375	1-14	1.625	HW-130	2.00	1.500	1.062	1.562	1.56	1.50	7.00	.50	.75	FRC109
FRC-110	1.750	1 1/4-12	2.000	HW-135	2.50	1.750	1.312	2.062	1.81	2.00	8.00	.50	1.00	FRC110

Threaded Rod

Material: Alloy Steel (Stud Stock) ASTM Spec. A-193
Heat Treat: Brinell 275-310 Stress Relieved
Finish: Black Oxide

Tubing Spacer

Material: Welded D.O.M. 1020/1026 Steel or Cold Drawn Seamless
Heat Treat: None
Finish: Black Oxide

Hardened Washer

Material: 1020 H.R.S.
Heat Treat: Carb. And Hdn., Rock "C" 55-60, .03 Min. Case.
Finish: Black Oxide

Model Number Development

(For Special Sizes)

Floating Rod Coupler _____

Thread Size _____

Hardened Washer _____

Outside Diameter Sleeve _____

Inside Diameter Sleeve _____

"B" Length _____

"C" Length _____

Detail Standard Floating Rod Coupler

FRC-1-14-HW-130-1.50-1.062-1.562-6.00

NOTE: Sizes in chart above are standard. Other sizes may be ordered as "special" items using "Model Number Development" format.

Detail Standard Co.

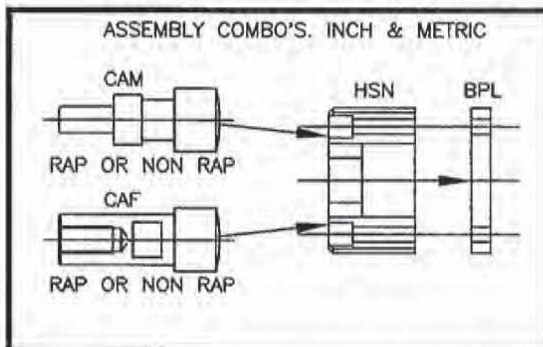
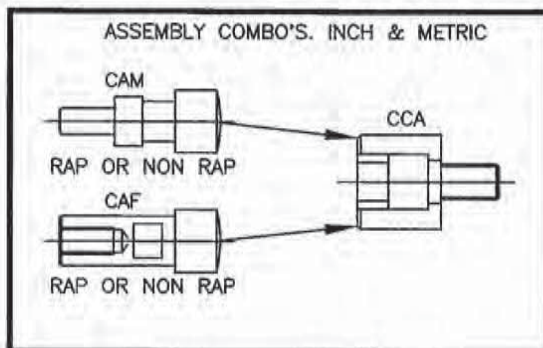
CYLINDER COUPLER ADAPTER & CYLINDER ADAPTER ASSEMBLY MATREX

SEE PAGES G-6 TO G-15
FOR INDIVIDUAL PARTS

INCH

Part No.	Part No.	Part No.	Part No.
CAM-101R	CCA-101	HSN-101	BPL-101
CAM-101N	CCA-101	HSN-101	BPL-101
CAM-102R	CCA-102	HSN-102	BPL-102
CAM-102N	CCA-102	HSN-102	BPL-102
CAM-103R	CCA-103	HSN-103	BPL-103
CAM-103N	CCA-103	HSN-103	BPL-103

CAF-102R	CCA-102	HSN-102	BPL-102
CAF-102N	CCA-102	HSN-102	BPL-102
CAF-103R	CCA-103	HSN-103	BPL-103
CAF-103N	CCA-103	HSN-103	BPL-103
CAF-104N		HSN-104	BPL-104



METRIC

Part No.	Part No.	Part No.	Part No.
MCAM-101R	MCCA-101	MHSN-101	MBPL-101
MCAM-101N	MCCA-101	MHSN-101	MBPL-101
MCAM-102R	MCCA-102	MHSN-102	MBPL-102
MCAM-102N	MCCA-102	MHSN-102	MBPL-102
MCAM-103R	MCCA-103	MHSN-103	MBPL-103
MCAM-103N	MCCA-103	MHSN-103	MBPL-103
MCAM-104R	MCCA-104	MHSN-104	MBPL-104
MCAM-104N	MCCA-104	MHSN-104	MBPL-104
MCAM-105R	MCCA-105		
MCAM-105N	MCCA-105		
MCAM-106R	MCCA-106		
MCAM-106N	MCCA-106		
MCAM-107R	MCCA-107	MHSN-107	MBPL-107
MCAM-107N	MCCA-107	MHSN-107	MBPL-107
MCAM-108R	MCCA-108	MHSN-108	MBPL-108
MCAM-108N	MCCA-108	MHSN-108	MBPL-108
MCAM-109R	MCCA-109		
MCAM-109N	MCCA-109		
MCAM-110R	MCCA-110		
MCAM-110N	MCCA-110		
MCAM-111R	MCCA-111		
MCAM-111N	MCCA-111		

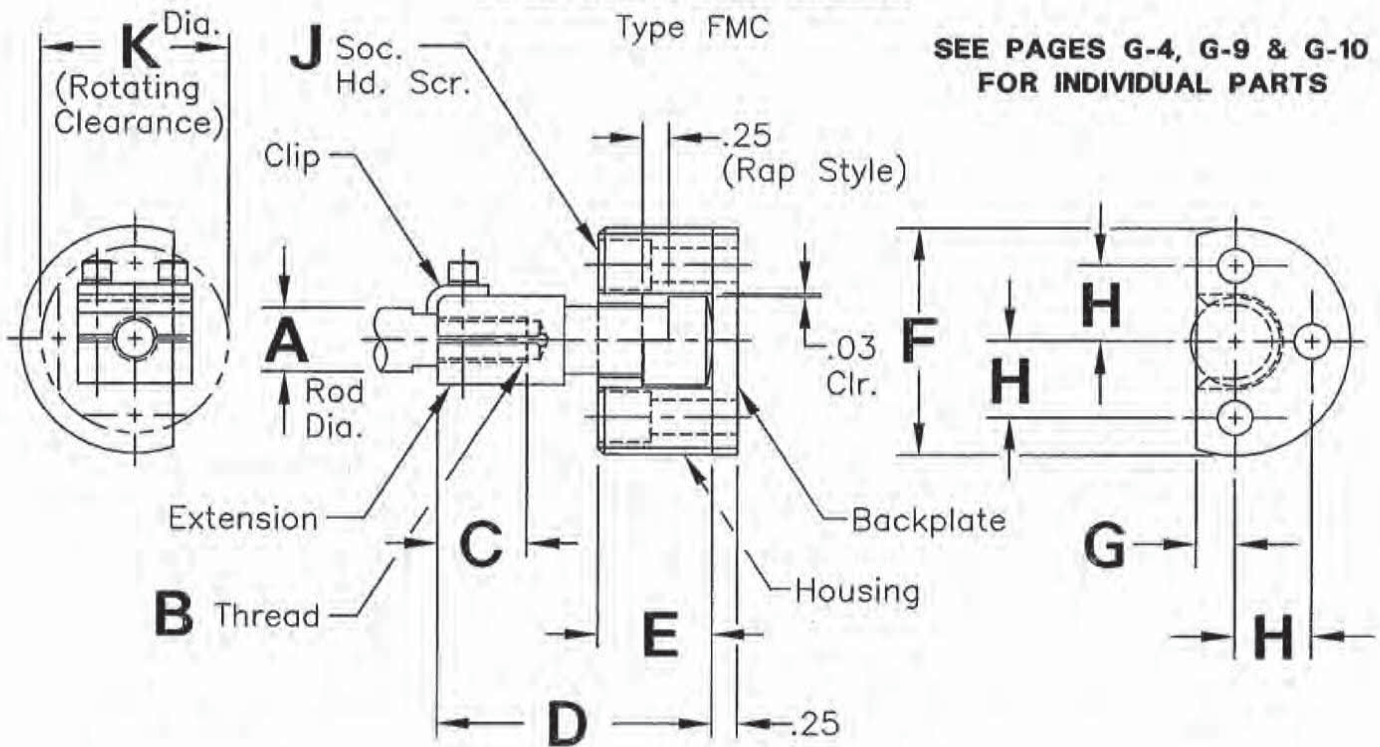
MCAF-102R	MCCA-102	MHSN-102	MBPL-102
MCAF-102N	MCCA-102	MHSN-102	MBPL-102
MCAF-103R	MCCA-103	MHSN-103	MBPL-103
MCAF-103N	MCCA-103	MHSN-103	MBPL-103
MCAF-104R	MCCA-104	MHSN-104	MBPL-104
MCAF-104N	MCCA-104	MHSN-104	MBPL-104
MCAF-105R	MCCA-105		
MCAF-105N	MCCA-105		
MCAF-107R	MCCA-107	MHSN-107	MBPL-107
MCAF-107N	MCCA-107	MHSN-107	MBPL-107
MCAF-109R	MCCA-109		
MCAF-109N	MCCA-109		
MCAF-111R	MCCA-111		
MCAF-111N	MCCA-111		

Detail Standard Co.

FLOATING ROD COUPLER

Type FMC

SEE PAGES G-4, G-9 & G-10
FOR INDIVIDUAL PARTS



Part No.	Style	A	B	C	D	E	F	G	H	J	K
FMC-101R	RAP	.625	7/16-20	.88	2.50	1.12	2.25	.38	.750	.31	2.00
FMC-101N	NON-RAP	.625	7/16-20	.88	2.50	1.12	2.25	.38	.750	.31	2.00
FMC-102R	RAP	1.000	3/4-16	1.25	3.62	1.75	3.00	.44	1.000	.38	2.50
FMC-102N	NON-RAP	1.000	3/4-16	1.25	3.62	1.75	3.00	.44	1.000	.38	2.50
FMC-103R	RAP	1.375	1-14	1.75	4.50	2.00	3.50	.56	1.188	.50	2.75
FMC-103N	NON-RAP	1.375	1-14	1.75	4.50	2.00	3.50	.56	1.188	.50	2.75

Part No.	Style	Clip	Extension	Housing	Backplate
FMC-101R	RAP	CL-101	EX-101R	HSN-101	BPL-101
FMC-101N	NON-RAP	CL-101	EX-101N	HSN-101	BPL-101
FMC-102R	RAP	CL-102	EX-102R	HSN-102	BPL-102
FMC-102N	NON-RAP	CL-102	EX-102N	HSN-102	BPL-102
FMC-103R	RAP	CL-103	EX-103R	HSN-103	BPL-103
FMC-103N	NON-RAP	CL-103	EX-103N	HSN-103	BPL-103

Each Floating Rod Coupler Assembly Includes

- (1) Extension
- (1) Housing
- (1) Backplate
- (1) Clip
- (2) Clamp Screws With Lockwashers

FINISH: Black Oxide

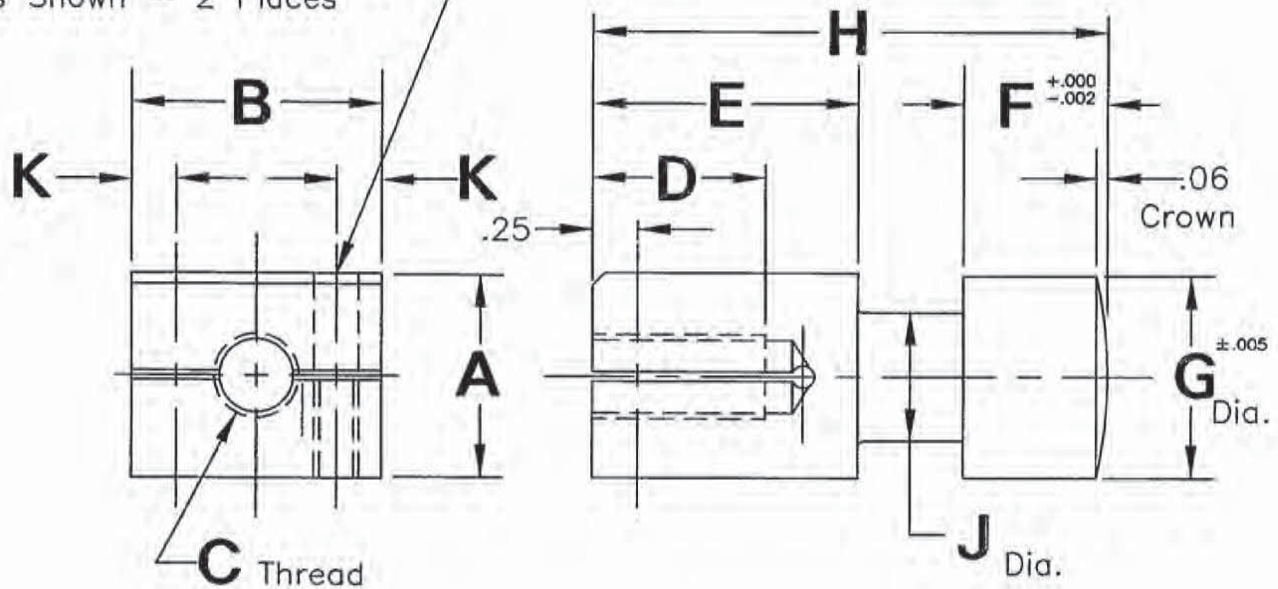
Detail Standard Co.

EXTENSION

Type EX

SEE PAGE G-3
FOR COMPLETE ASSEMBLY

7/32 Drill & #10-32 Tap
As Shown - 2 Places



Part No.	Style	A	B	C	D	E	F	G	H	J	K
EX-101R	RAP	.88	1.12	7/16-20	.88	1.25	.432	.875	2.50	.44	.18
EX-101N	NON-RAP	.88	1.12	7/16-20	.88	1.25	.680	.875	2.50	.44	.18
EX-101R-M1	RAP	.88	1.12	M10 X 1.25	.88	1.25	.432	.875	2.50	.44	.18
EX-101N-M1	NON-RAP	.88	1.12	M10 X 1.25	.88	1.25	.680	.875	2.50	.44	.18
EX-101R-M2	RAP	.88	1.12	M12 X 1.25	.88	1.25	.432	.875	2.50	.44	.18
EX-101N-M2	NON-RAP	.88	1.12	M12 X 1.25	.88	1.25	.680	.875	2.50	.44	.18
EX-102R	RAP	1.25	1.50	3/4-16	1.25	1.75	.750	1.250	3.62	.75	.18
EX-102N	NON-RAP	1.25	1.50	3/4-16	1.25	1.75	.993	1.250	3.62	.75	.18
EX-102R-M1	RAP	1.25	1.50	M16 X 1.5	1.25	1.75	.750	1.250	3.62	.75	.18
EX-102N-M1	NON-RAP	1.25	1.50	M16 X 1.5	1.25	1.75	.993	1.250	3.62	.75	.18
EX-102R-M2	RAP	1.25	1.50	M20 X 1.5	1.25	1.75	.750	1.250	3.62	.75	.18
EX-102N-M2	NON-RAP	1.25	1.50	M20 X 1.5	1.25	1.75	.993	1.250	3.62	.75	.18
EX-103R	RAP	1.50	1.75	1-14	1.75	2.38	.870	1.500	4.50	1.00	.25
EX-103N	NON-RAP	1.50	1.75	1-14	1.75	2.38	1.118	1.500	4.50	1.00	.25
EX-103R-M1	RAP	1.50	1.75	M27 X 2	1.75	2.38	.870	1.500	4.50	1.00	.25
EX-103N-M1	NON-RAP	1.50	1.75	M27 X 2	1.75	2.38	1.118	1.500	4.50	1.00	.25

Material: 12L14

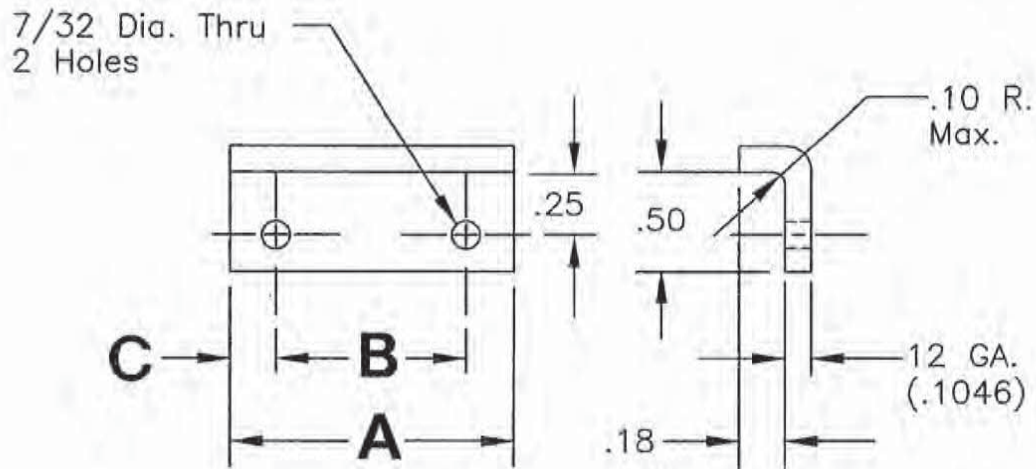
Heat Treat: Carb. & Hdn., Rock. "C" 45-50, .06 min. case

Finish: Black Oxide

Detail Standard Co.

CLIP
Type CL

**SEE PAGE G-3
FOR COMPLETE ASSEMBLY**



Part No.	A	B	C	Used With
CL-101	1.12	.750	.18	FMC-101R & N
CL-102	1.50	1.125	.18	FMC-102R & N
CL-103	1.75	1.250	.25	FMC-103R & N

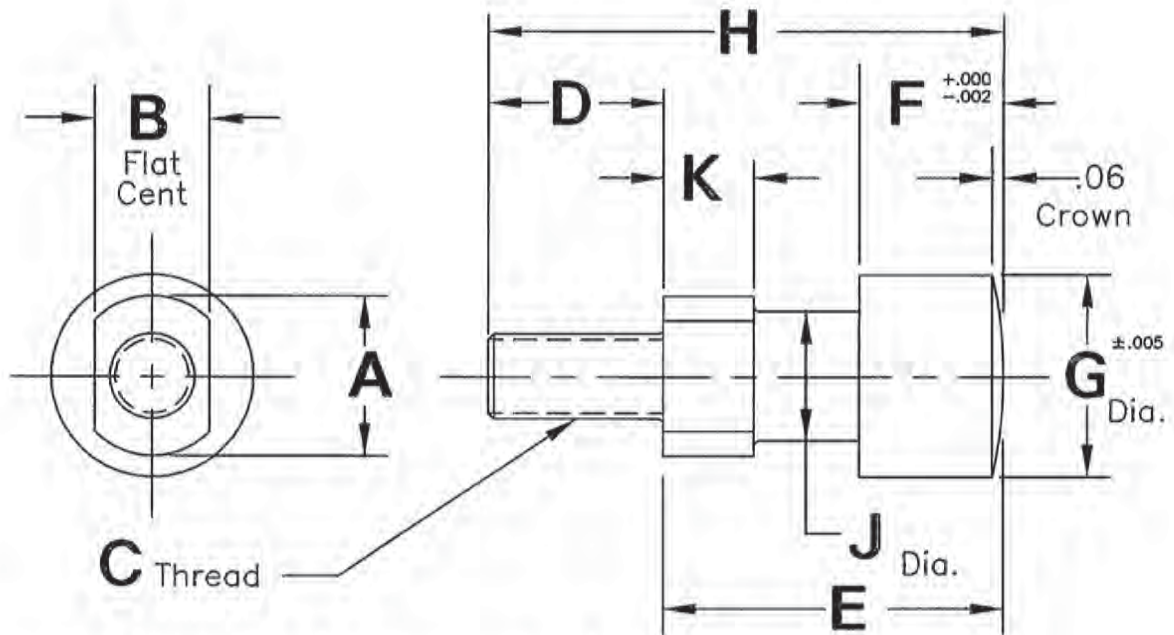
Material: 1018 C.R.S.
Heat Treat: None
Finish: Black Oxide

Detail Standard Co.

CYLINDER ADAPTER MALE

Type CAM

SEE PAGE G-2
FOR ASSEMBLY MATRIX



Part No.	Style	A	B	C	D	E	F	G	H	J	K
CAM-101R	RAP	.62	.50	7/16-20	.62	1.75	.438	.88	2.38	.44	.50
CAM-101N	NON-RAP	.62	.50	7/16-20	.62	1.75	.688	.88	2.38	.44	.50
CAM-102R	RAP	1.00	.88	3/4-16	1.00	2.38	.750	1.25	3.38	.75	.50
CAM-102N	NON-RAP	1.00	.88	3/4-16	1.00	2.38	1.000	1.25	3.38	.75	.50
CAM-103R	RAP	1.38	1.25	1"-14	1.50	2.75	.875	1.50	4.25	1.00	.62
CAM-103N	NON-RAP	1.38	1.25	1"-14	1.50	2.75	1.125	1.50	4.25	1.00	.62

Material: 12L14

Heat Treat: Carb. & Hdn., Rock. "C" 45-50, .06 min. case

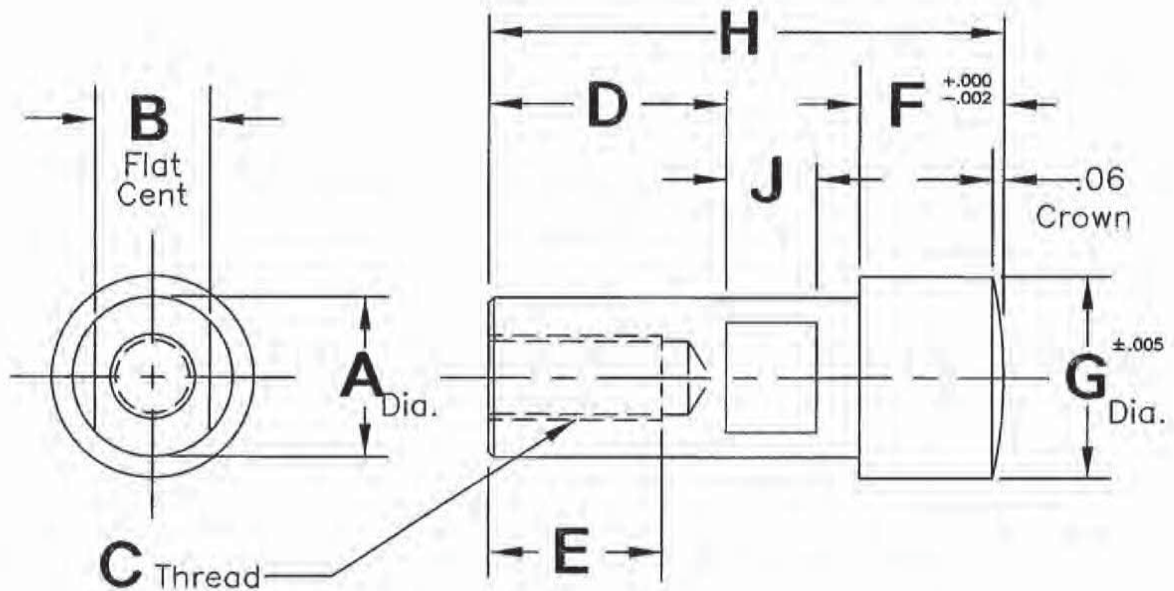
Finish: Black Oxide

Detail Standard Co.

CYLINDER ADAPTER FEMALE

Type CAF

SEE PAGE G-2
FOR ASSEMBLY MATRIX



Part No.	Style	A	B	C	D	E	F	G	H	J
CAF-102R	RAP	.75	.62	7/16-20	1.00	.94	.750	1.25	2.38	.56
CAF-102N	NON-RAP	.75	.62	7/16-20	1.00	.94	1.000	1.25	2.62	.56
CAF-103R	RAP	1.00	.88	3/4-16	1.25	1.19	.875	1.50	2.75	.56
CAF-103N	NON-RAP	1.00	.88	3/4-16	1.25	1.19	1.125	1.50	3.00	.56
CAF-104N	NON-RAP	1.75	1.50	1 1/4-12	2.12	2.50	1.375	2.50	4.75	.56

Material: 12L14

Heat Treat: Carb. & Hdn., Rock. "C" 45-50, .06 min. case

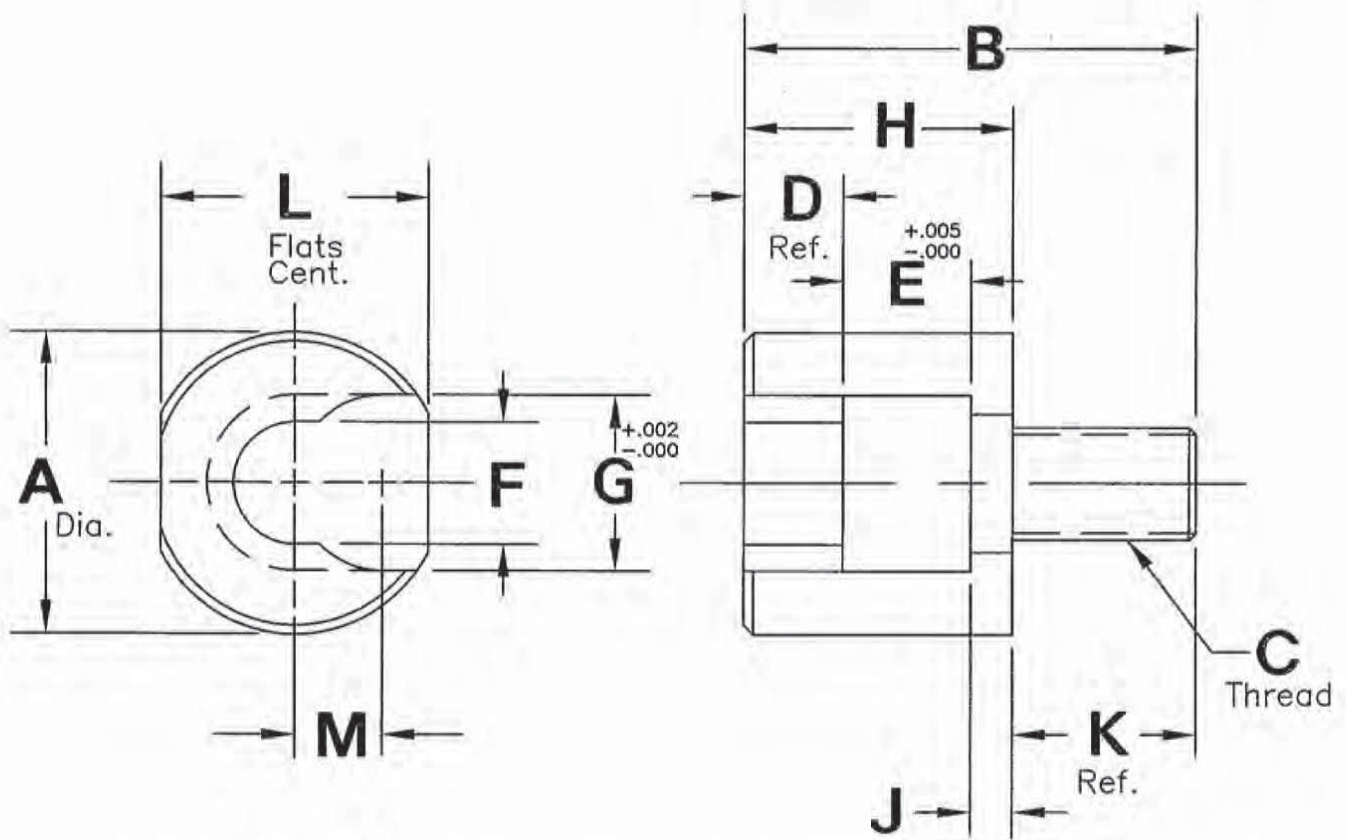
Finish: Black Oxide

Detail Standard Co.

CYLINDER COUPLER ADAPTER

Type CCA

SEE PAGE G-2
FOR ASSEMBLY MATRIX



Part No.	A	B	C	D	E	F	G	H	J	K	L	M
CCA-101	1.44	2.25	7/16-20	.44	.690	.53	.930	1.50	.37	.75	1.31	.47
CCA-102	1.93	3.25	3/4-16	.75	1.000	.81	1.310	2.12	.37	1.12	1.75	.66
CCA-103	2.68	4.00	1"-14	.56	1.125	1.09	1.560	2.38	.37	1.62	2.38	.78

Material: 12L14 C.R.S.

Heat Treat: Carb. and Hdn., Rock "C" 45-50, .06 Min. Case.

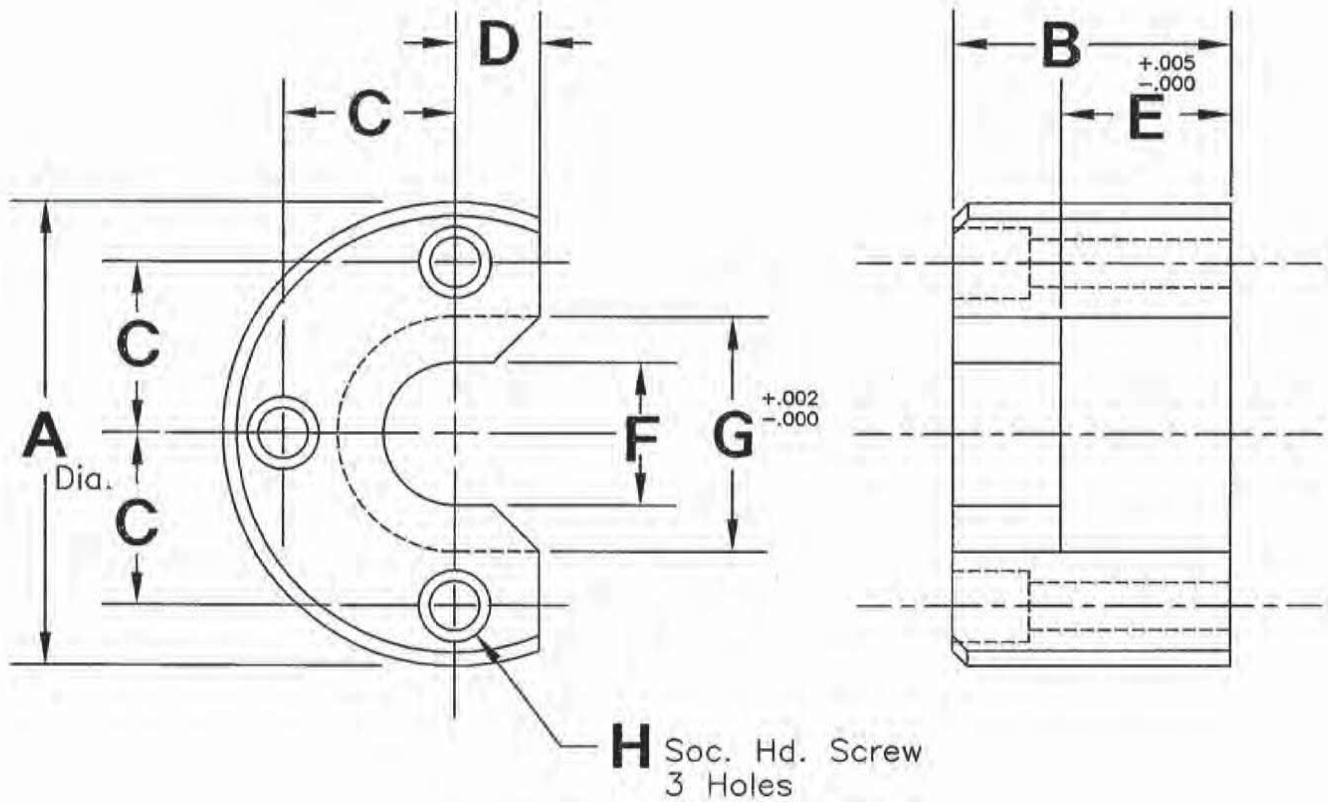
Finish: Black Oxide

Detail Standard Co.

HOUSING

Type HSN

SEE PAGE G-2 & G-3
FOR COMPLETE ASSEMBLY



Part No.	A	B	C	D	E	F	G	H
HSN-101	2.25	1.12	.750	.38	.690	.50	.930	.31
HSN-102	3.00	1.75	1.000	.44	1.003	.81	1.310	.38
HSN-103	3.50	2.00	1.188	.56	1.125	1.06	1.560	.50
HSN-104	5.75	2.50	2.000	.81	1.375	1.81	2.560	.75

Material: 12L14 C.R.S.

Heat Treat: Carb. and Hdn., Rock "C" 45-50, .06 Min. Case.

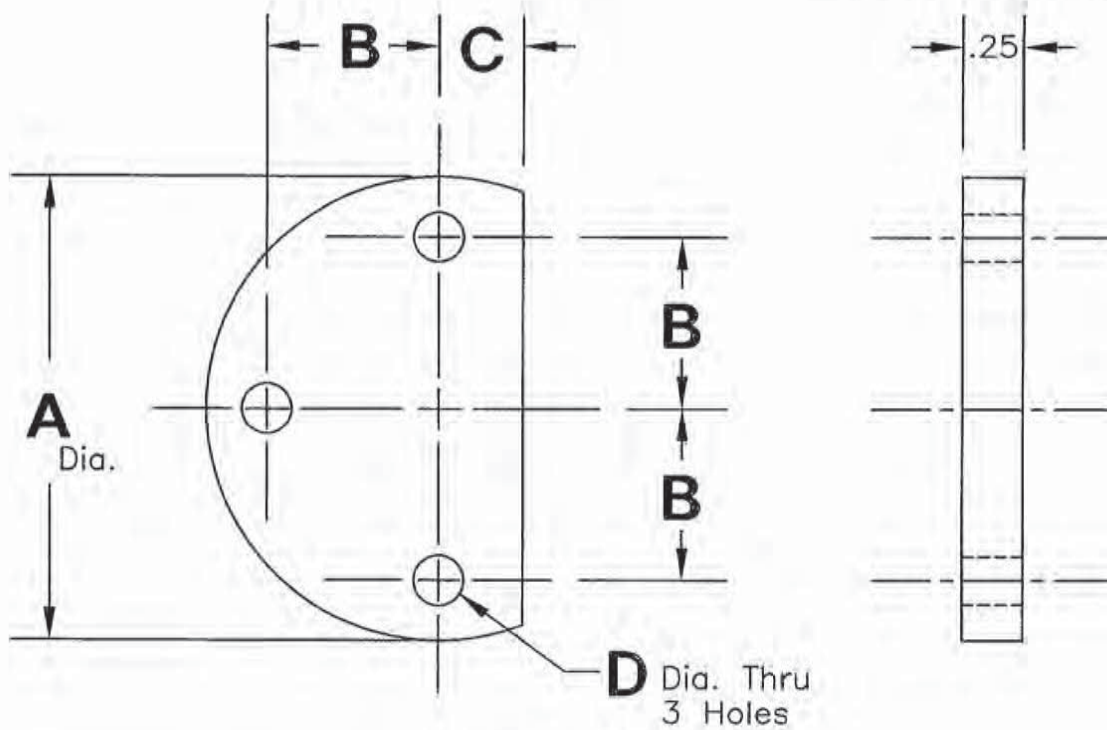
Finish: Black Oxide

Detail Standard Co.

BACKPLATE

Type BPL

SEE PAGE G-2 & G-3
FOR COMPLETE ASSEMBLY



Part No.	A	B	C	D
BPL-101	2.25	.750	.38	.34
BPL-102	3.00	1.000	.44	.41
BPL-103	3.50	1.188	.56	.53
BPL-104	5.75	2.000	.81	.78

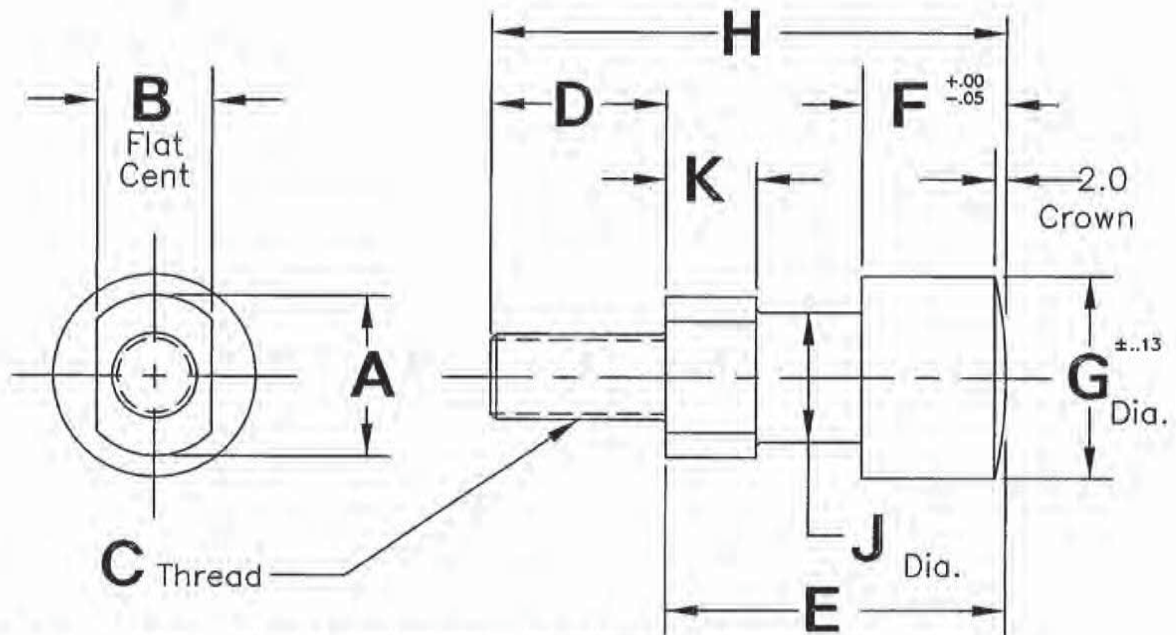
Material: 12L14 C.R.S.
Heat Treat: Carb. and Hdn., Rock "C" 45-50, .06 Min. Case.
Finish: Black Oxide

Detail Standard Co.

METRIC CYLINDER ADAPTER MALE

Type MCAM

SEE PAGE G-2
FOR ASSEMBLY MATRIX



Part No.	Style	A	B	C	D	E	F	G	H	J	K
MCAM-101R	RAP	12.0	10.0	M8x1	15.0	26.0	5.00	14.0	41.0	8.0	6.0
MCAM-101N	NON-RAP	12.0	10.0	M8x1	15.0	26.0	9.80	14.0	41.0	8.0	6.0
MCAM-102R	RAP	16.0	12.0	M10x1.25	15.0	47.0	15.00	22.0	62.0	12.0	12.0
MCAM-102N	NON-RAP	16.0	12.0	M10x1.25	15.0	47.0	19.80	22.0	62.0	12.0	12.0
MCAM-103R	RAP	16.0	12.0	M12x1.25	18.0	47.0	15.00	22.0	65.0	12.0	12.0
MCAM-103N	NON-RAP	16.0	12.0	M12x1.25	18.0	47.0	19.80	22.0	65.0	12.0	12.0
MCAM-104R	RAP	25.0	22.0	M14x1.5	20.0	60.0	20.00	32.0	80.0	20.0	12.0
MCAM-104N	NON-RAP	25.0	22.0	M14x1.5	20.0	60.0	24.80	32.0	80.0	20.0	12.0
MCAM-105R	RAP	25.0	22.0	M16x1.5	20.0	60.0	20.00	32.0	80.0	20.0	12.0
MCAM-105N	NON-RAP	25.0	22.0	M16x1.5	20.0	60.0	24.80	32.0	80.0	20.0	12.0
MCAM-106R	RAP	25.0	22.0	M18x1.5	25.0	60.0	20.00	32.0	85.0	20.0	12.0
MCAM-106N	NON-RAP	25.0	22.0	M18x1.5	25.0	60.0	24.80	32.0	85.0	20.0	12.0
MCAM-107R	RAP	25.0	22.0	M20x1.5	25.0	60.0	20.00	32.0	85.0	20.0	12.0
MCAM-107N	NON-RAP	25.0	22.0	M20x1.5	25.0	60.0	24.80	32.0	85.0	20.0	12.0
MCAM-108R	RAP	32.0	28.0	M24x2	35.0	70.0	25.00	40.0	105.0	25.0	15.0
MCAM-108N	NON-RAP	32.0	28.0	M24x2	35.0	70.0	29.80	40.0	105.0	25.0	15.0
MCAM-109R	RAP	32.0	28.0	M27x2	35.0	70.0	25.00	40.0	105.0	25.0	15.0
MCAM-109N	NON-RAP	32.0	28.0	M27x2	35.0	70.0	29.80	40.0	105.0	25.0	15.0
MCAM-110R	RAP	45.0	40.0	M33x2	45.0	80.0	25.00	55.0	125.0	35.0	15.0
MCAM-110N	NON-RAP	45.0	40.0	M33x2	45.0	80.0	29.80	55.0	125.0	35.0	15.0

Material: 12L14

Heat Treat: Carb. & Hdn., Rock. "C" 45-50, .06 min. case

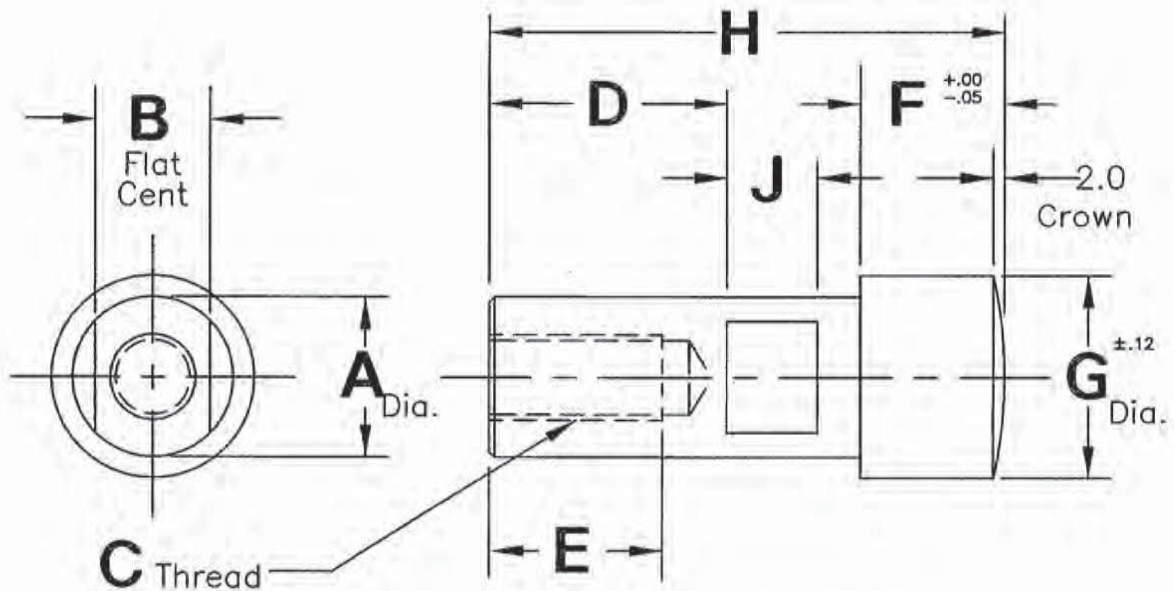
Finish: Black Oxide

Detail Standard Co.

METRIC CYLINDER ADAPTER FEMALE

Type MCAF

SEE PAGE G-2
FOR ASSEMBLY MATRIX



Part No.	Style	A	B	C	D	E	F	G	H	J
MCAF-102R	RAP	20.0	16.0	M10x1.25	25.0	25.0	20.00	32.0	60.0	12.0
MCAF-102N	NON-RAP	20.0	16.0	M10x1.25	25.0	25.0	24.80	32.0	65.0	12.0
MCAF-103R	RAP	20.0	16.0	M12x1.25	25.0	25.0	20.00	32.0	60.0	12.0
MCAF-103N	NON-RAP	20.0	16.0	M12x1.25	25.0	25.0	24.80	32.0	65.0	12.0
MCAF-104R	RAP	25.0	22.0	M14x1.5	32.0	25.0	25.00	40.0	70.0	14.0
MCAF-104N	NON-RAP	25.0	22.0	M14x1.5	32.0	25.0	29.80	40.0	75.0	14.0
MCAF-105R	RAP	25.0	22.0	M16x1.5	32.0	25.0	25.00	40.0	70.0	14.0
MCAF-105N	NON-RAP	25.0	22.0	M16x1.5	32.0	25.0	29.80	40.0	75.0	14.0
MCAF-107R	RAP	35.0	32.0	M20x1.5	40.0	45.0	25.00	55.0	100.0	15.0
MCAF-107N	NON-RAP	35.0	32.0	M20x1.5	40.0	45.0	29.80	55.0	105.0	15.0
MCAF-109R	RAP	45.0	38.0	M27x2	55.0	65.0	30.00	63.0	115.0	14.0
MCAF-109N	NON-RAP	45.0	38.0	M27x2	55.0	65.0	34.80	63.0	120.0	14.0
MCAF-110R	RAP	45.0	38.0	M33x2	48.0	65.0	30.00	63.0	115.0	14.0
MCAF-110N	NON-RAP	45.0	38.0	M33x2	48.0	65.0	34.80	63.0	120.0	14.0

Material: 12L14

Heat Treat: Carb. & Hdn., Rock. "C" 45-50, .06 min. case

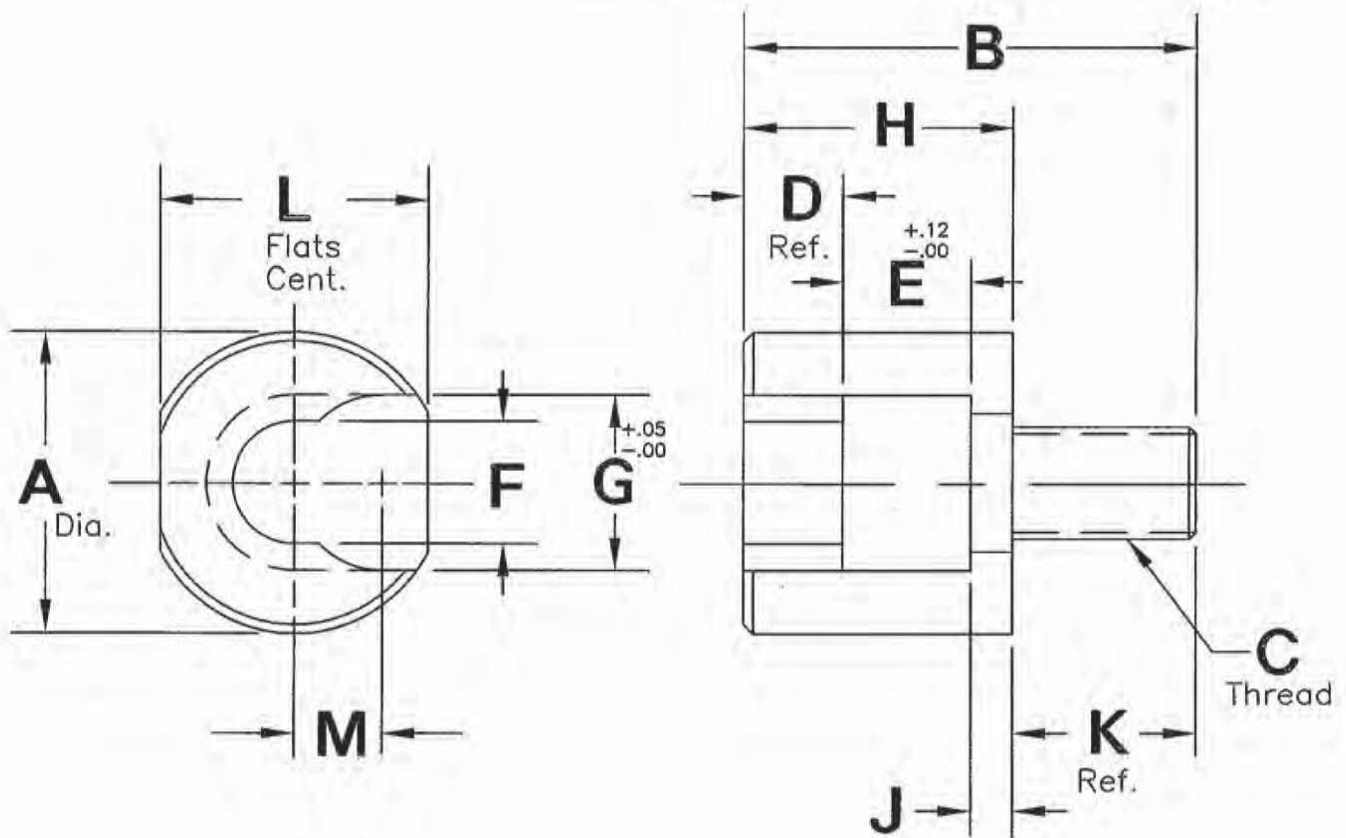
Finish: Black Oxide

Detail Standard Co.

METRIC CYLINDER COUPLER ADAPTER

Type MCCA

SEE PAGE G-2
FOR ASSEMBLY MATRIX



Part No.	A	B	C	D	E	F	G	H	J	K	L	M
MCCA-101	30.0	41.0	M8x1.0	8.0	10.00	10.0	16.00	26.0	8.0	15.0	24.0	8.5
MCCA-102	40.0	57.0	M10x1.25	12.0	20.00	14.0	24.00	42.0	10.0	15.0	32.0	12.0
MCCA-103	40.0	60.0	M12x1.25	12.0	20.00	14.0	24.00	42.0	10.0	18.0	32.0	12.0
MCCA-104	50.0	75.0	M14x1.5	20.0	25.00	22.0	35.00	55.0	10.0	20.0	45.0	17.5
MCCA-105	50.0	75.0	M16x1.5	20.0	25.00	22.0	35.00	55.0	10.0	20.0	45.0	17.5
MCCA-106	50.0	80.0	M18x1.5	20.0	25.00	22.0	35.00	55.0	10.0	25.0	45.0	17.5
MCCA-107	50.0	80.0	M20x1.5	20.0	25.00	22.0	35.00	55.0	10.0	25.0	45.0	17.5
MCCA-108	70.0	95.0	M24x2.0	20.0	30.00	27.0	42.00	60.0	10.0	35.0	60.0	21.0
MCCA-109	70.0	95.0	M27x2.0	20.0	30.00	27.0	42.00	60.0	10.0	35.0	60.0	21.0
MCCA-110	100.0	120.0	M30x2.0	30.0	30.00	37.0	57.00	80.0	20.0	40.0	80.0	28.5
MCCA-111	100.0	120.0	M33x2.0	30.0	30.00	37.0	57.00	80.0	20.0	45.0	80.0	28.5

Material: 12L14 C.R.S.

Heat Treat: Carb. and Hdn., Rock "C" 45-50, .06 Min. Case.

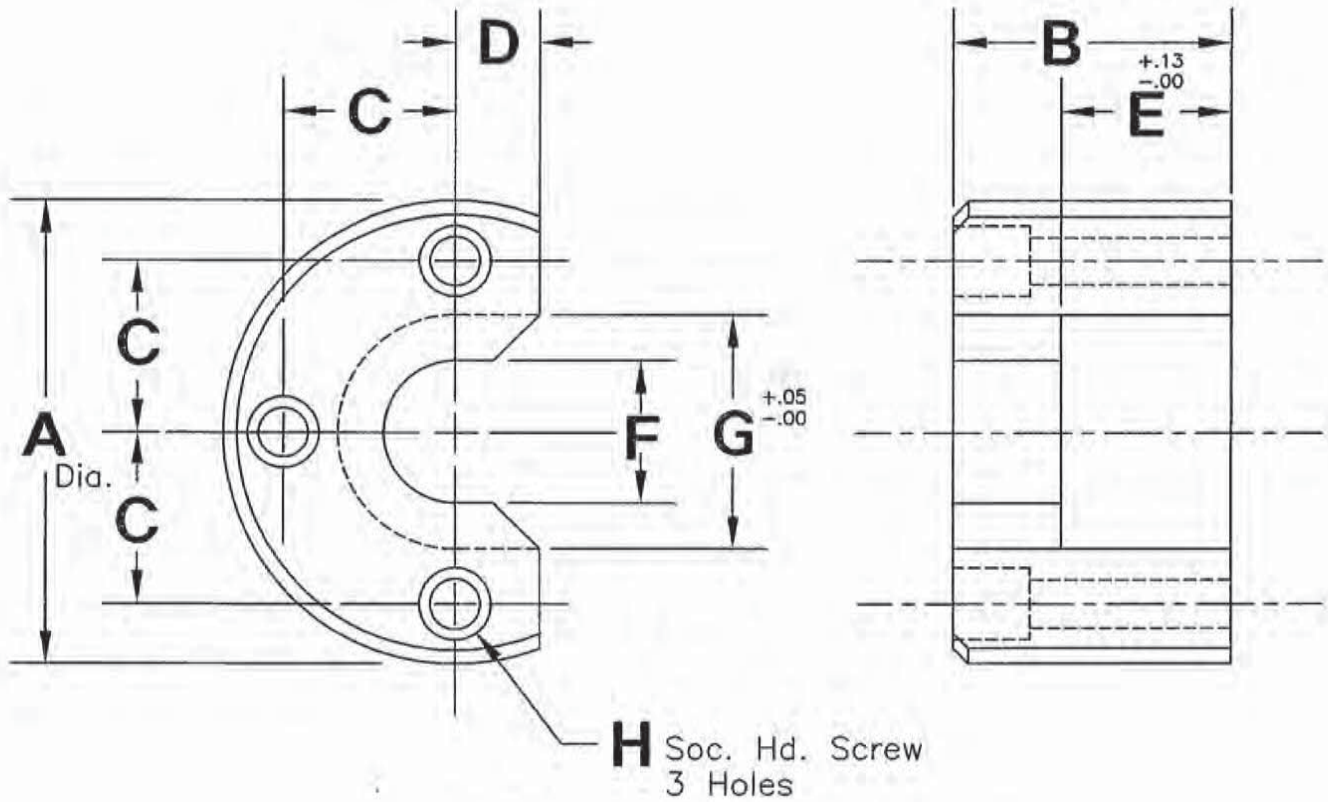
Finish: Black Oxide

Detail Standard Co.

METRIC HOUSING

Type MHSN

SEE PAGE G-2
FOR ASSEMBLY MATRIX



Part No.	A	B	C	D	E	F	G	H
MHSN-101	60.0	32.0	20.00	10.0	20.00	14.0	24.00	M8
MHSN-102	75.0	45.0	25.00	12.0	25.00	22.0	35.00	M10
MHSN-103	90.0	50.0	30.00	15.0	30.00	27.0	42.00	M12
MHSN-104	120.0	60.0	40.00	20.0	30.00	37.0	57.00	M14
MHSN-107	150.0	65.0	50.00	20.0	35.00	47.0	65.00	M20
MHSN-108	160.0	70.0	55.00	25.0	40.00	52.0	72.00	M24

Material: 12L14 C.R.S.

Heat Treat: Carb. and Hdn., Rock "C" 45-50, .06 Min. Case.

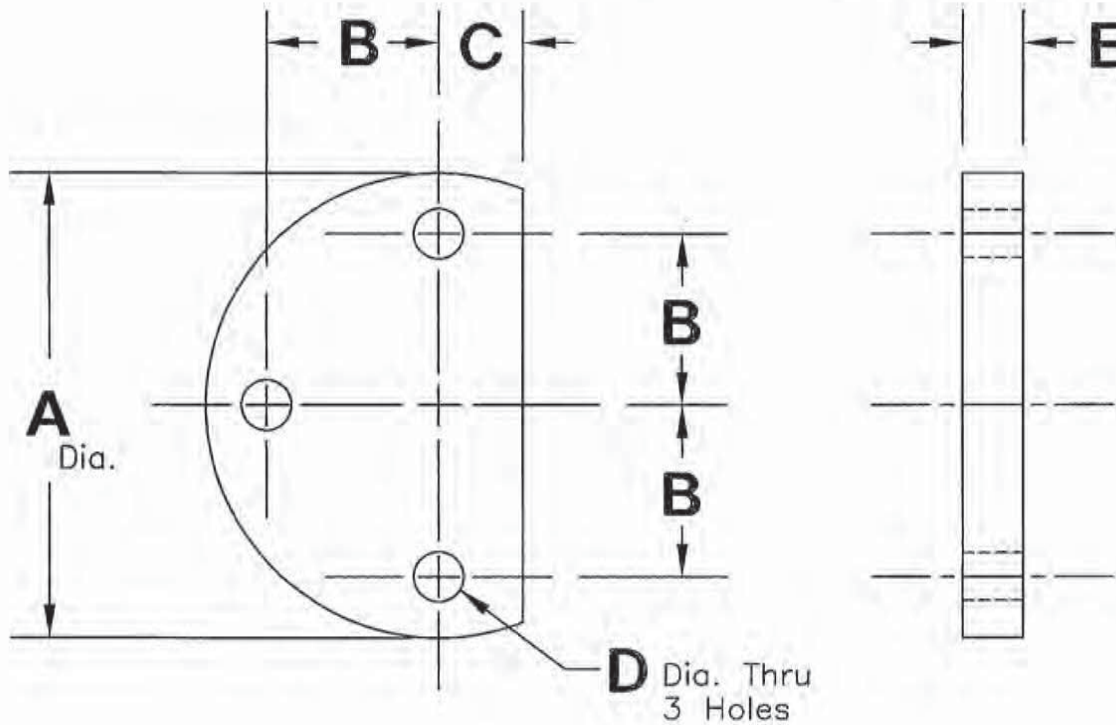
Finish: Black Oxide

Detail Standard Co.

METRIC BACKPLATE

Type MBPL

SEE PAGE G-2
FOR ASSEMBLY MATRIX



Part No.	A	B	C	D	E
MBPL-101	60.0	20.00	10.0	9.0	6.0
MBPL-102	75.0	25.00	12.0	11.0	6.0
MBPL-103	90.0	30.00	15.0	13.0	8.0
MBPL-104	120.0	40.00	20.0	15.0	8.0
MBPL-107	150.0	50.00	20.0	21.0	10.0
MBPL-108	160.0	55.00	25.0	25.0	10.0

Material: 12L14 C.R.S.

Heat Treat: Carb. and Hdn., Rock "C" 45-50, .06 Min. Case.

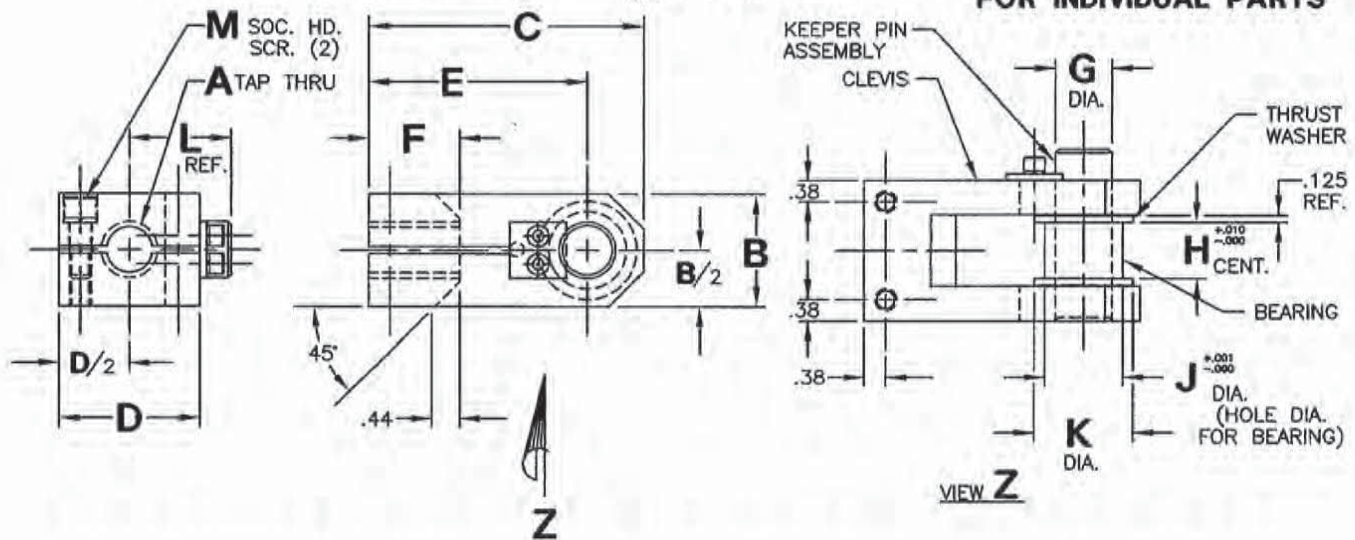
Finish: Black Oxide

Detail Standard Co.

CLEVIS ASSEMBLY

Type CAN

SEE PAGES G-17 TO G-19
FOR INDIVIDUAL PARTS



Part No.	A	B	C	D	E	F	G	H	J	K	L	M
CAN-101	5/16-24	1.25	2.62	1.50	2.12	.88	.38	.515	.500	.75	1.21	.25
CAN-102	7/16-20	1.50	3.00	2.00	2.25	.75	.62	.765	.812	1.25	1.50	.31
CAN-103	1/2-20	1.50	3.00	2.00	2.25	.75	.62	.765	.812	1.25	1.50	.31
CAN-104	3/4-16	2.00	4.38	2.50	3.38	1.12	.75	1.015	1.000	1.38	1.75	.38
CAN-105	7/8-14	2.00	4.88	2.50	3.88	1.62	1.00	1.015	1.375	1.75	1.81	.38
CAN-106	1-14	2.00	4.88	2.50	3.88	1.62	1.00	1.015	1.375	1.75	1.81	.38
CAN-107	1 1/4-12	3.00	7.00	3.00	5.62	2.25	1.38	1.265	1.750	1.94	2.25	.38
CAN-108	1 1/2-12	3.00	7.00	3.00	5.62	2.25	1.38	1.265	1.750	1.94	2.25	.38
CAN-109	1 3/4-12	3.00	7.50	4.50	6.00	2.25	1.50	2.265	1.875	2.50	3.00	.38
CAN-110	1 7/8-12	3.00	8.50	4.50	7.00	3.25	1.50	2.265	1.875	2.50	3.00	.38

Part No.	CLEVIS	KEEPER PIN ASSEMBLY	THRUST WASHER	BEARING
CAN-101	CVS-101	KPH-.375-1.50-2K-11	CTW-101	CBG-101
CAN-102	CVS-102	KPH-.625-2.00-2K-11	CTW-102	CBG-102
CAN-103	CVS-103	KPH-.625-2.00-2K-11	CTW-102	CBG-102
CAN-104	CVS-104	KPH-.750-2.50-2K-11	CTW-103	CBG-103
CAN-105	CVS-105	KPH-1.000-2.50-2K-11	CTW-104	CBG-104
CAN-106	CVS-106	KPH-1.000-2.50-2K-11	CTW-104	CBG-104
CAN-107	CVS-107	KPHH-1.375-3.00	CTW-105	CBG-105
CAN-108	CVS-108	KPHH-1.375-3.00	CTW-105	CBG-105
CAN-109	CVS-109	KPHH-1.500-4.50	CTW-106	CBG-106
CAN-110	CVS-110	KPHH-1.500-4.50	CTW-106	CBG-106

Each Clevis Assembly Includes

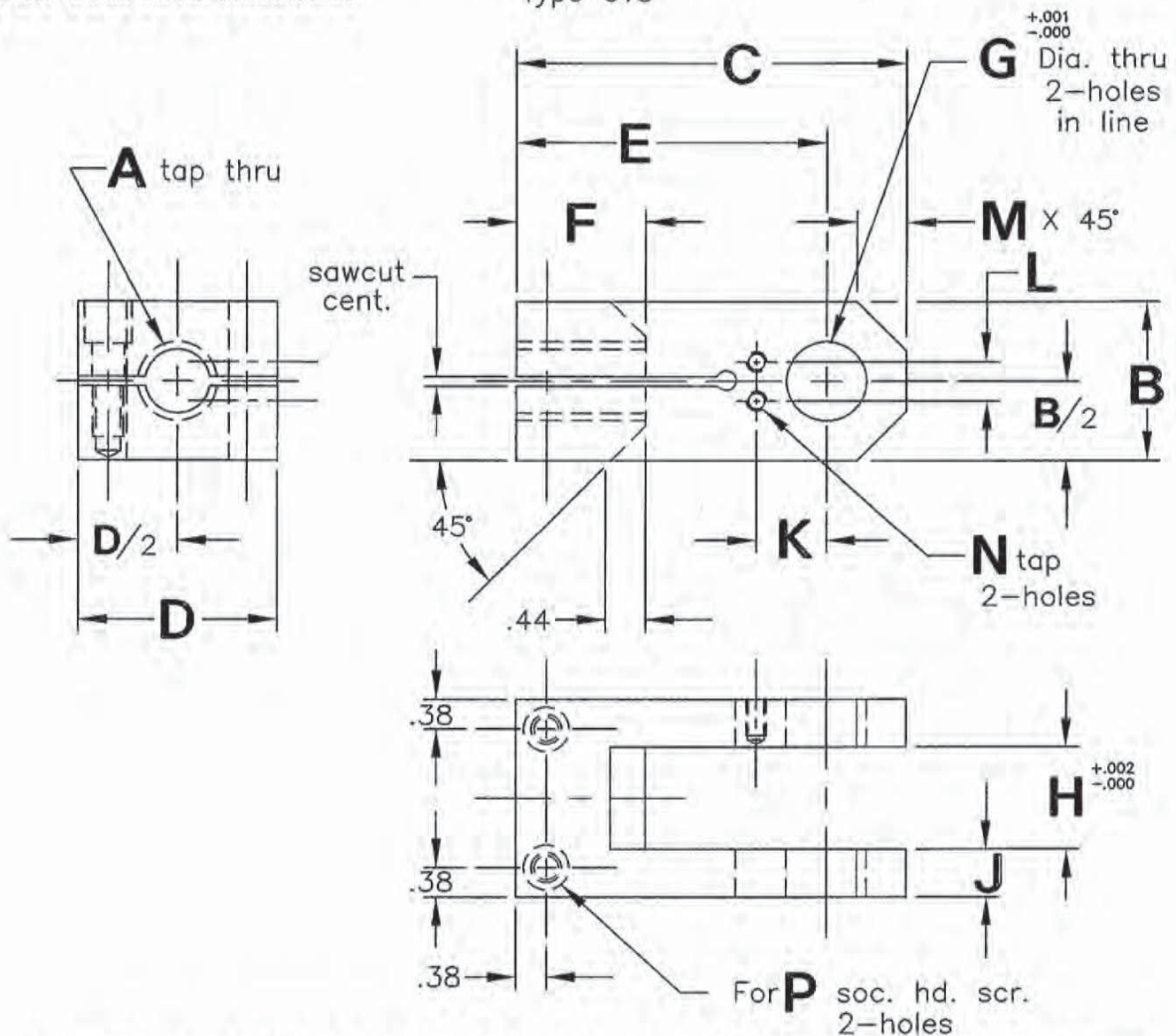
- (1) Clevis
- (1) Hardened Keeper Pin With Keeper and Mounting Screws
- (1) Hardened Bearing (SAE-863 or SO-16)
- (2) Thrust Washer
- (2) Socket Head Screws With Hi-Coller Lockwashers

FINISH: Black Oxide (Clevis Only)

Detail Standard Co.

SEE PAGE G-16
FOR COMPLETE ASSEMBLY

CLEVIS Type CVS



Part No.	A	B	C	D	E	F	G	H	J	K	L	M	N	P SOCKET HEAD SCREW
CVS-101	5/16-24	1.25	2.62	1.50	2.12	.88	.376	.780	.36	.437	.500	.38	1/4-20 THRU	1/4-20 x 3/4
CVS-102	7/16-20	1.50	3.00	2.00	2.25	.75	.626	1.030	.49	.562	.500	.50	1/4-20 THRU	5/16-18 x 7/8
CVS-103	1/2-20	1.50	3.00	2.00	2.25	.75	.626	1.030	.49	.562	.500	.50	1/4-20 THRU	5/16-18 x 7/8
CVS-104	3/4-16	2.00	4.38	2.50	3.38	1.12	.751	1.280	.61	.625	.500	.62	1/4-20 x 1/2	3/8-16 x 1 1/4
CVS-105	7/8-14	2.00	4.88	2.50	3.88	1.62	1.001	1.280	.61	.750	.500	.62	1/4-20 x 1/2	3/8-16 x 1 1/4
CVS-106	1-14	2.00	4.88	2.50	3.88	1.62	1.001	1.280	.61	.750	.500	.62	1/4-20 x 1/2	3/8-16 x 1 1/4
CVS-107	1 1/4-12	3.00	7.00	3.00	5.62	2.25	1.376	1.530	.74	1.063	.750	.75	3/8-16 THRU	3/8-16 x 1 3/4
CVS-108	1 1/2-12	3.00	7.00	3.00	5.62	2.25	1.376	1.530	.74	1.063	.750	.75	3/8-16 THRU	3/8-16 x 1 3/4
CVS-109	1 3/4-12	3.00	7.50	4.50	6.00	2.25	1.501	2.530	.99	1.125	.750	.75	3/8-16 x 3/4	3/8-16 x 1 3/4
CVS-110	1 7/8-12	3.00	8.50	4.50	7.00	3.25	1.501	2.530	.99	1.125	.750	.75	3/8-16 x 3/4	3/8-16 x 1 3/4

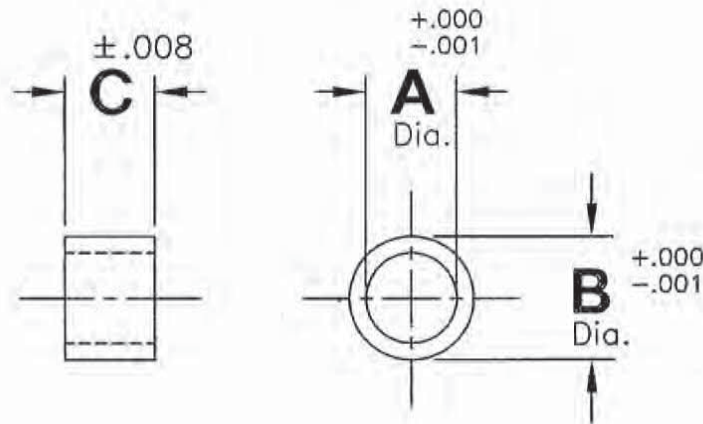
Material: 1020 H.R.S.
Finish: Black oxide

Detail Standard Co.

BEARING

Type CBG

SEE PAGE G-16
FOR COMPLETE ASSEMBLY



Part No.	A	B	C
CBG-101	.378	.503	.500
CBG-102	.630	.815	.750
CBG-103	.755	1.003	.940
CBG-104	1.005	1.378	1.000
CBG-105	1.380	1.753	1.250
CBG-106	1.505	1.878	2.250

COMPOSITION: (percent)	SAE 863 (CBG-101 & 102 ONLY)	SO-16 (ALL OTHERS)
COPPER	18.0 - 22.0	18.0 - 22.0
IRON	BALANCE	BALANCE
CARBON	-	0.6 - 1.0
TIN	-	-
OTHER ELEMENTS	2.0	2.0

Material:

CBG-101 & 102 - Sintered Bronze SAE 863

All Others - SO-16 Hardened Bearing

Notes:

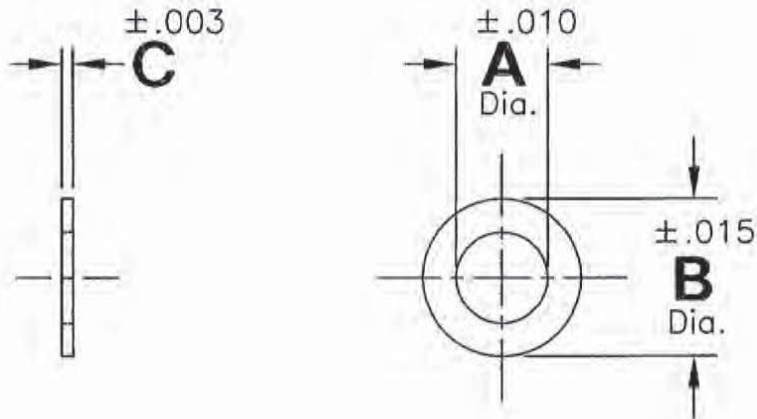
- Recommended hole size for press fit: Nominal $+.001 / -.000$
- Not to be used with additional lubrication.
- Concentricity (I.D. with respect to O.D.)
CBG-101 to CBG-106 $\pm .003$ T.I.R.

Detail Standard Co.

THRUSTWASHER

Type CTW

SEE PAGE G-16
FOR COMPLETE ASSEMBLY



Part No.	A	B	C
CTW-101	.380	.750	.125
CTW-102	.628	1.250	.125
CTW-103	.753	1.375	.125
CTW-104	1.012	1.750	.125
CTW-105	1.379	1.940	.125
CTW-106	1.505	2.505	.125

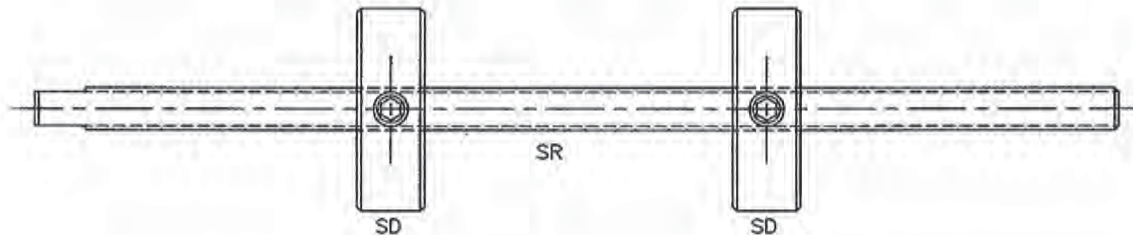
COMPOSITION: (percent)	SAE 863
COPPER	18.0 - 22.0
IRON	BALANCE
CARBON	-
TIN	-
OTHER ELEMENTS	2.0

Material: Sintered bronze (SAE 863)

Detail Standard Co.

SWITCH DOG ASSEMBLY & METRIC SWITCH DOG ASSEMBLY MATRIX

SEE PAGES G-21 TO G-22
FOR INDIVIDUAL PARTS



INCH

METRIC

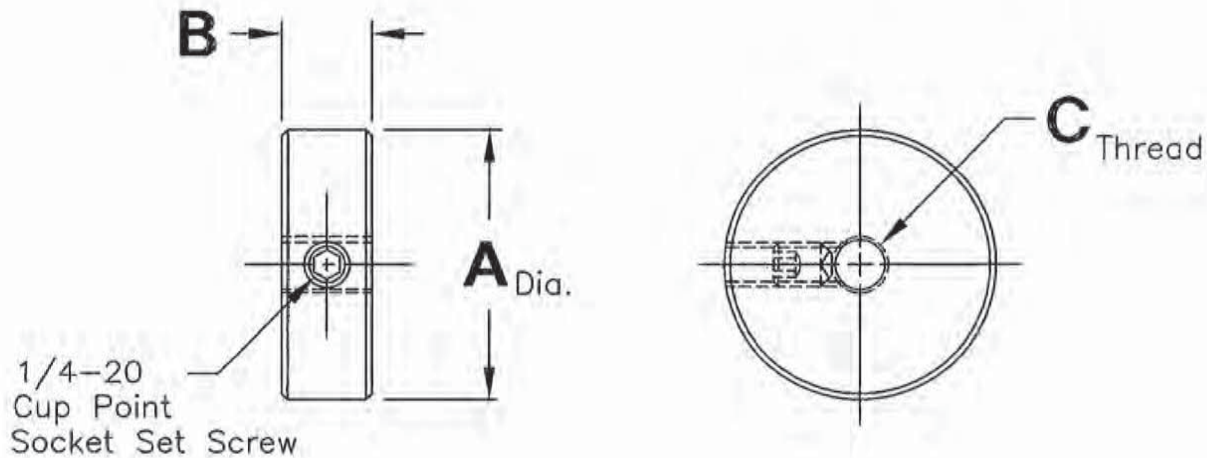
Cylinder Information			Switch Dog	Switch Rod	Cylinder Information			Switch Dog	Switch Rod
Bore & Type	Rod Dia.	Thread Size			Bore & Type	Rod Dia.	Thread Size		
1" -AIR	1/2	5/16-24	SD-101	SR-101-X	25mm-HYD	12.0	M8x1.0	MSD-101	MSR-101-X
1" -AIR	5/8	7/16-20	SD-102	SR-102-X	25mm-HYD	18.0	M12x1.25	MSD-103	MSR-103-X
1 1/2 -AIR	5/8	7/16-20	SD-102	SR-102-X	32mm-AIR	12.0	M8x1.0	MSD-101	MSR-101-X
1 1/2 -AIR	1	3/4-16	SD-103	SR-103-X	32mm-HYD	14.0	M10x1.25	MSD-102	MSR-102-X
1 1/2 -HYD	5/8	7/16-20	SD-102	SR-102-X	32mm-HYD	22.0	M16x1.5	MSD-105	MSR-105-X
1 1/2 -HYD	1	3/4-16	SD-103	SR-103-X	40mm-AIR	16.0	M10x1.25	MSD-102	MSR-102-X
2" -AIR	5/8	7/16-20	SD-102	SR-102-X	40mm-HYD	18.0	M12x1.25	MSD-103	MSR-103-X
2" -AIR	1	3/4-16	SD-103	SR-103-X	40mm-HYD	28.0	M20x1.5	MSD-107	MSR-107-X
2" -HYD	1	3/4-16	SD-103	SR-103-X	50mm-AIR	20.0	M14x1.5	MSD-104	MSR-104-X
2" -HYD	1 3/8	1-14	SD-104	SR-104-X	50mm-HYD	22.0	M16x1.5	MSD-105	MSR-105-X
2 1/2 -AIR	5/8	7/16-20	SD-102	SR-102-X	50mm-HYD	28.0	M20x1.5	MSD-107	MSR-107-X
2 1/2 -AIR	1	3/4-16	SD-103	SR-103-X	50mm-HYD	36.0	M27x2.0	MSD-109	MSR-109-X
2 1/2 -AIR	1 3/8	1-14	SD-104	SR-104-X	63mm-AIR	20.0	M14x1.5	MSD-104	MSR-104-X
2 1/2 -HYD	1	3/4-16	SD-103	SR-103-X	63mm-HYD	28.0	M20x1.5	MSD-107	MSR-107-X
2 1/2 -HYD	1 3/8	1-14	SD-104	SR-104-X	63mm-HYD	36.0	M27x2.0	MSD-109	MSR-109-X
3 1/4 -AIR	1	3/4-16	SD-103	SR-103-X	80mm-AIR	25.0	M18x1.5	MSD-106	MSR-106-X
3 1/4 -AIR	1 3/8	1-14	SD-104	SR-104-X	80mm-HYD	36.0	M27x2.0	MSD-109	MSR-109-X
3 1/4 -HYD	1 3/8	1-14	SD-104	SR-104-X	100mm-AIR	25.0	M18x1.5	MSD-106	MSR-106-X
4" -AIR	1	3/4-16	SD-103	SR-103-X	125mm-AIR	32.0	M24x2.0	MSD-108	MSR-108-X
4" -AIR	1 3/8	1-14	SD-104	SR-104-X					
5" -AIR	1	3/4-16	SD-103	SR-103-X					
5" -AIR	1 3/8	1-14	SD-104	SR-104-X					
6" -AIR	1 3/8	1-14	SD-104	SR-104-X					

Detail Standard Co.

SWITCH DOG & METRIC SWITCH DAG

Type SD & MSD

SEE PAGE G-20
FOR ASSEMBLY MATRIX



INCH

Part No.	A	B	C
SD-101	1.50	.50	5/16-24
SD-102	2.00	.62	7/16-20
SD-103	2.50	.62	3/4-16
SD-104	3.00	.62	1"-14

METRIC

Part No.	A	B	C
MSD-101	38.0	13.0	M8x1.0
MSD-102	50.0	16.0	M10x1.25
MSD-103	50.0	16.0	M12x1.25
MSD-104	63.0	16.0	M14x1.5
MSD-105	63.0	16.0	M16x1.5
MSD-106	63.0	16.0	M18x1.5
MSD-107	63.0	16.0	M20x1.5
MSD-108	75.0	16.0	M24x2.0
MSD-109	75.0	16.0	M27x2.0

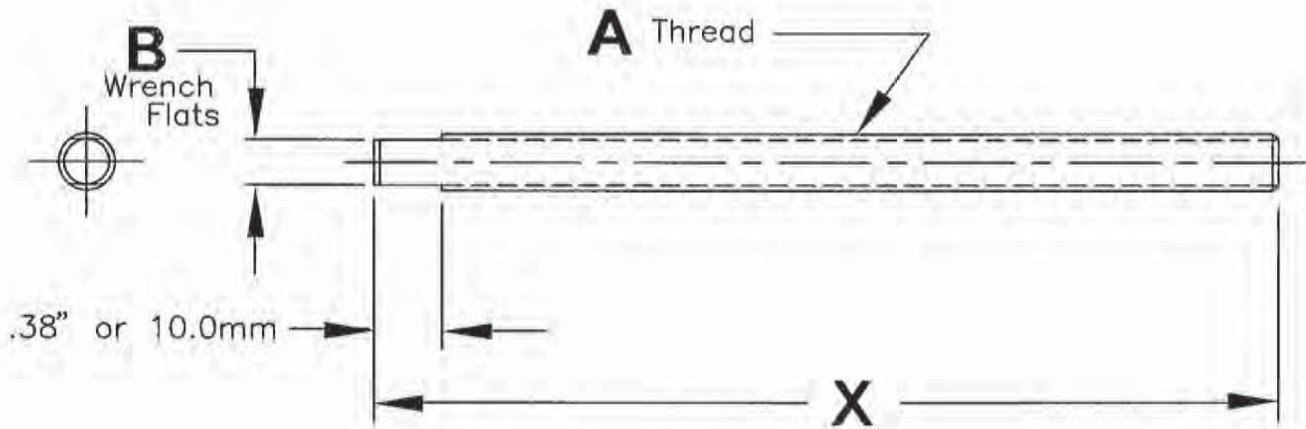
Material: 1018 C.R.S.
Heat Treat: NONE.
Finish: Black Oxide
Cup Point Socket Set Screw included.

Detail Standard Co.

SWITCH ROD & METRIC SWITCH ROD

Type SR & MSR

SEE PAGE G-20
FOR ASSEMBLY MATRIX



INCH

Part No.	A Thread	B
SR-101	5/16-24	.25
SR-102	7/16-20	.31
SR-103	3/4-16	.50
SR-104	1"-14	.75

Available 5" thru 12"
in 1" Increments

METRIC

Part No.	A Thread	B
MSR-101	M8x1	5.0
MSR-102	M10x1.25	6.0
MSR-103	M12x1.25	8.0
MSR-104	M14x1.5	10.0
MSR-105	M16x1.5	12.0
MSR-106	M18x1.5	14.0
MSR-107	M20x1.5	16.0
MSR-108	M24x2.0	20.0
MSR-109	M27x2.0	22.0

Available 130.0 thru 300.0
in 10.0mm Increments

Material: Alloy Steel (Stud Stock) ASTM Spec. A-193

Heat Treat: Brinell 275-310 Stress Relieved

Finish: Black Oxide

Model Number Development

Detail Standard Switch Rod

SR-101-X

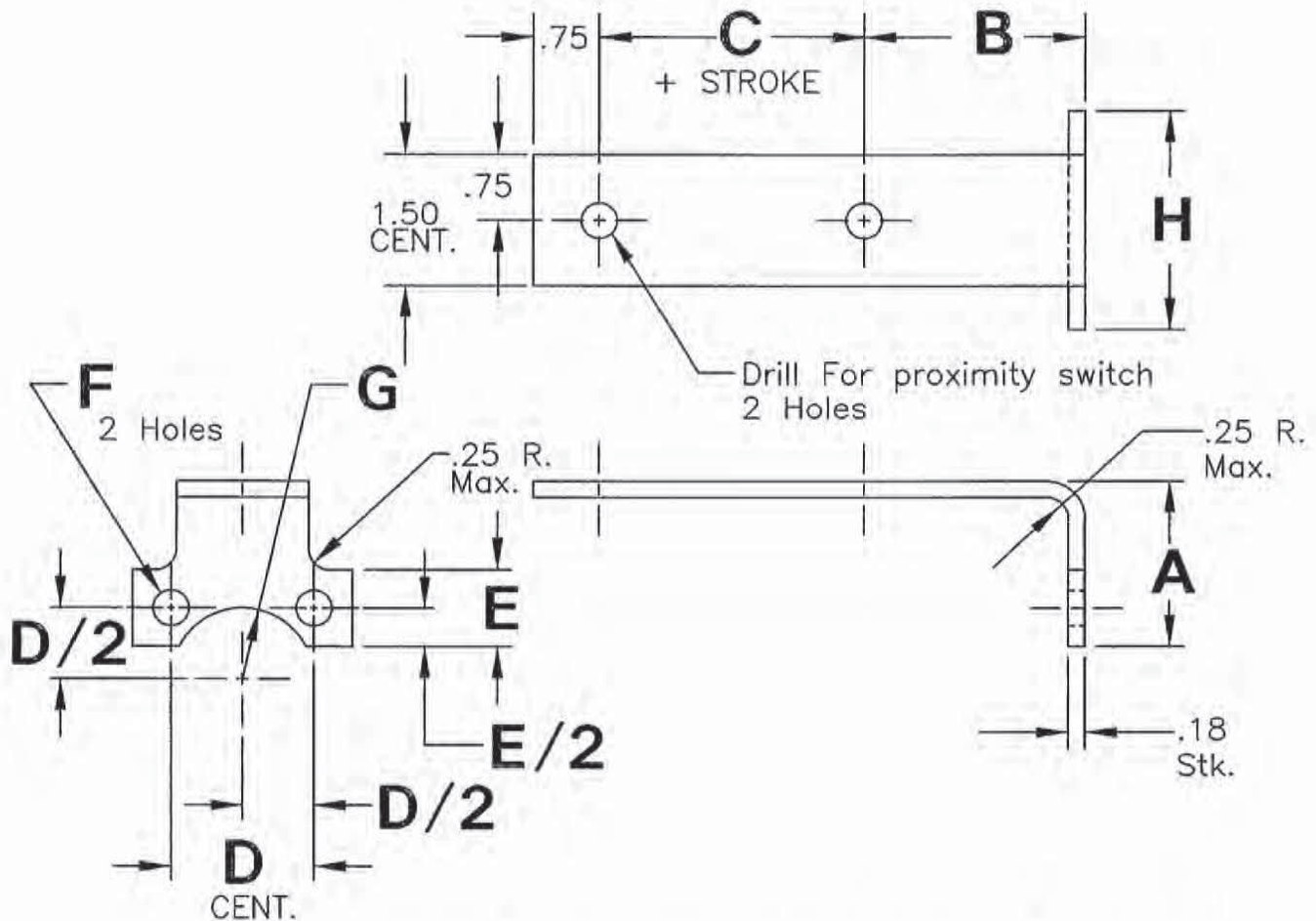
Part No.
"X" Thread



Detail Standard Co.

CYLINDER MOUNT PROXIMITY SWITCH BRACKET

Type CMPSB



Part No.	Cylinder Bore & Type	A	B	C	D	E	F	G	H
CMPSB-101	1.50 Bore, Air	1.500	2.625	1.625	1.482	.625	.281	.875	2.000
CMPSB-102	2.00 Bore, Air	1.500	2.625	1.625	1.838	.750	.344	.875	2.500
CMPSB-103	2.50 Bore, Air	1.500	2.625	1.625	2.192	.875	.344	1.125	3.000
CMPSB-104	1.50 Bore, Hyd.	1.875	3.500	2.000	1.625	.875	.406	.875	2.500
CMPSB-105	2.00 Bore, Hyd.	2.000	3.500	2.000	2.050	1.000	.531	1.125	3.000
CMPSB-106	2.50 Bore, Hyd.	1.750	3.500	2.000	2.550	1.000	.531	1.125	3.500

Model Number Development Detail Standard Cylinder Proximity Switch Bracket

CMPSB-101-2.00-18mm-C

Part Number _____
 Cylinder Stroke _____
 Proximity Switch Size _____
 Material _____

C = Material: 1018 C.R.S., Heat Treat: None, Finish: Black Oxide

A = Material: Aluminum, Heat Treat: None, Finish: Natural Finish

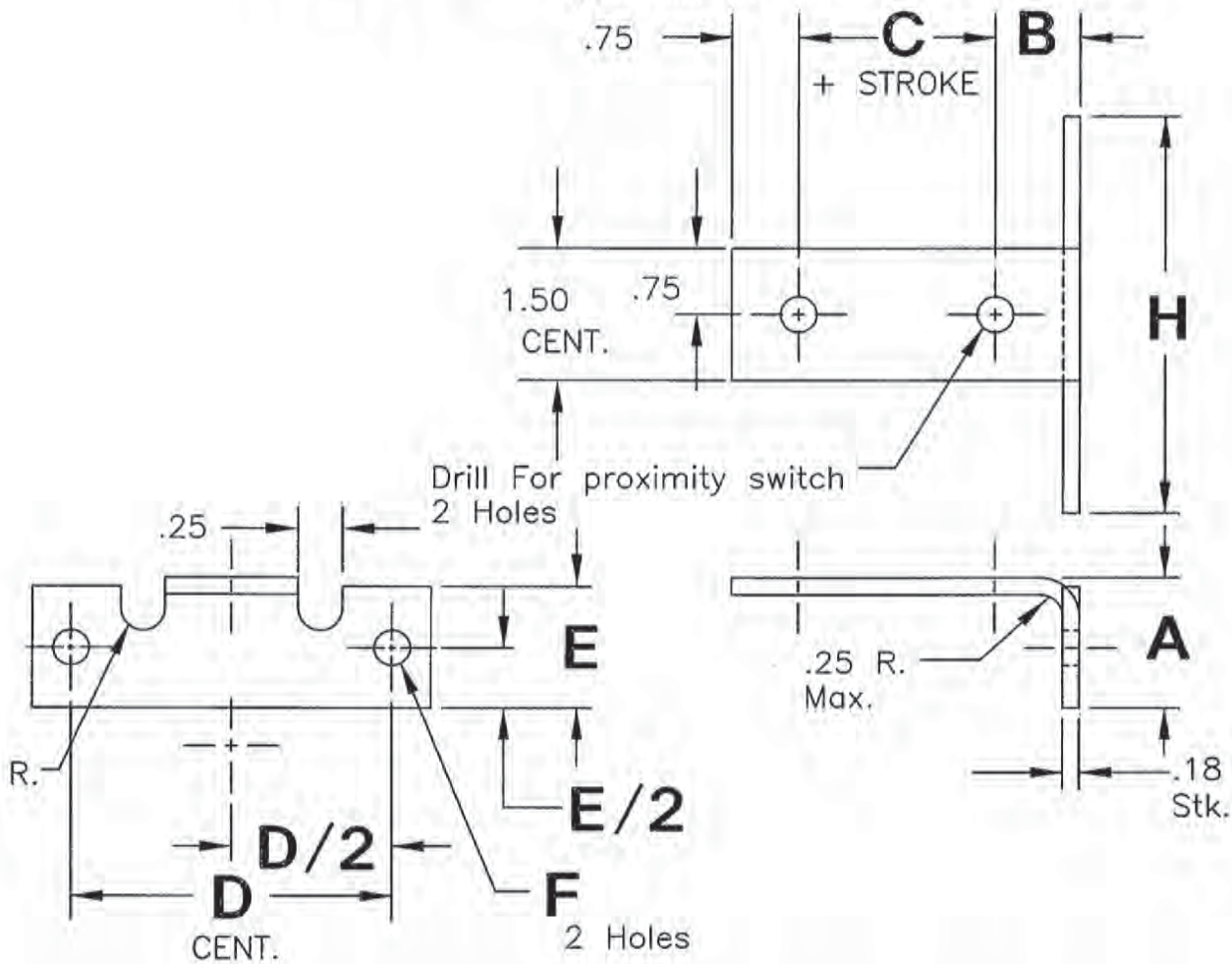
S = Material: Stainless Steel, Heat Treat: None, Finish: Natural Finish

NOTE: This Bracket Will Accommodate 8mm, 12mm & 18mm Proximity Switch's

Detail Standard Co.

CYLINDER MOUNT PROXIMITY SWITCH BRACKET

Type CMPSB



Part No.	Cylinder Bore & Type	A	B	C	D	E	F	H
CMPSB-107	3.25 Bore, Air	1.375	3.500	2.000	2.758	1.000	.438	3.750
CMPSB-108	4.00 Bore, Air	1.188	3.500	2.000	3.323	1.188	.438	4.500
CMPSB-109	3.25 Bore, Hyd.	1.500	3.500	2.000	3.250	1.250	.656	4.500

Model Number Development

Metric Cylinder Proximity Switch Bracket

CMPSB-109-50.0-18mm-C

Part Number _____
 Cylinder Stroke _____
 Proximity Switch Size _____
 Material _____

C = Material: 1018 C.R.S., Heat Treat: None, Finish: Black Oxide

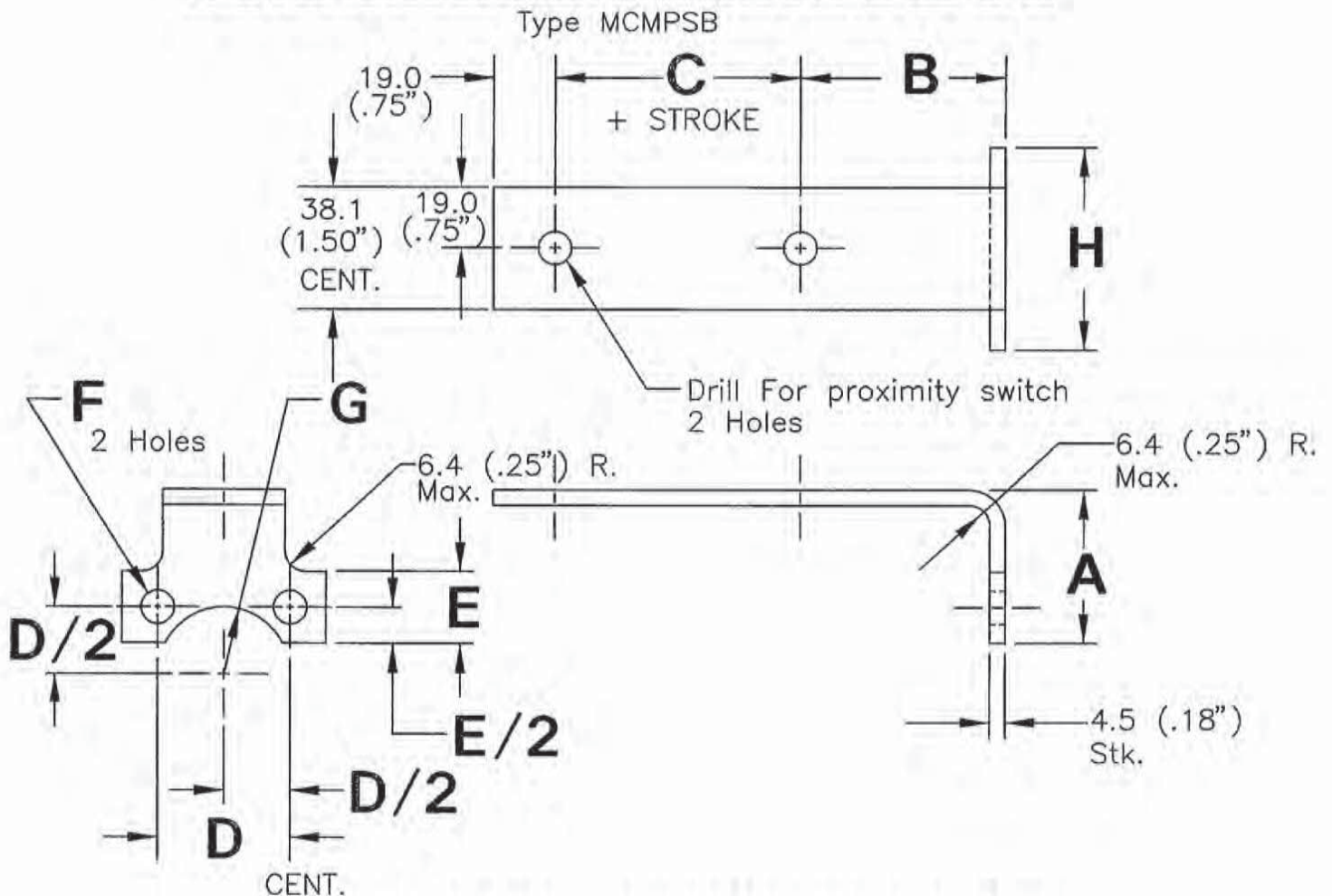
A = Material: Aluminum, Heat Treat: None, Finish: Natural Finish

S = Material: Stainless Steel, Heat Treat: None, Finish: Natural Finish

NOTE: This Bracket Will Accommodate 8mm, 12mm & 18mm Proximity Switch's

Detail Standard Co.

METRIC CYLINDER MOUNT PROXIMITY SWITCH BRACKET



Part No.	Cylinder Bore & Type	A	B	C	D	E	F	G	H
MCMPSB-101	32mm Bore, Air	38.1	65.0	50.0	32.5	17.5	6.8	20.0	50.0
MCMPSB-102	40mm Bore, Air	38.1	70.0	50.0	38.0	19.4	6.8	20.0	57.4
MCMPSB-103	50mm Bore, Air	38.1	75.0	50.0	46.5	22.9	8.8	25.0	69.4
MCMPSB-104	63mm Bore, Air.	38.1	75.0	50.0	56.5	25.9	8.8	25.0	82.4
MCMPSB-105	25mm Bore, Hyd.	38.1	60.0	50.0	28.3	11.7	5.8	20.0	40.0
MCMPSB-106	32mm Bore, Hyd.	38.1	70.0	50.0	33.2	11.8	6.8	20.0	45.0
MCMPSB-107	40mm Bore, Hyd.	38.1	70.0	50.0	41.7	21.3	8.8	25.0	63.0
MCMPSB-108	50mm Bore, Hyd.	38.1	70.0	50.0	52.3	22.7	12.8	30.0	75.0

Model Number Development

Metric Cylinder Proximity Switch Bracket

MCMPSB-101-50.0-18mm-C

Part Number _____
 Cylinder Stroke _____
 Proximity Switch Size _____
 Material _____

C = Material: 1018 C.R.S., Heat Treat: None, Finish: Black Oxide

A = Material: Aluminum, Heat Treat: None, Finish: Natural Finish

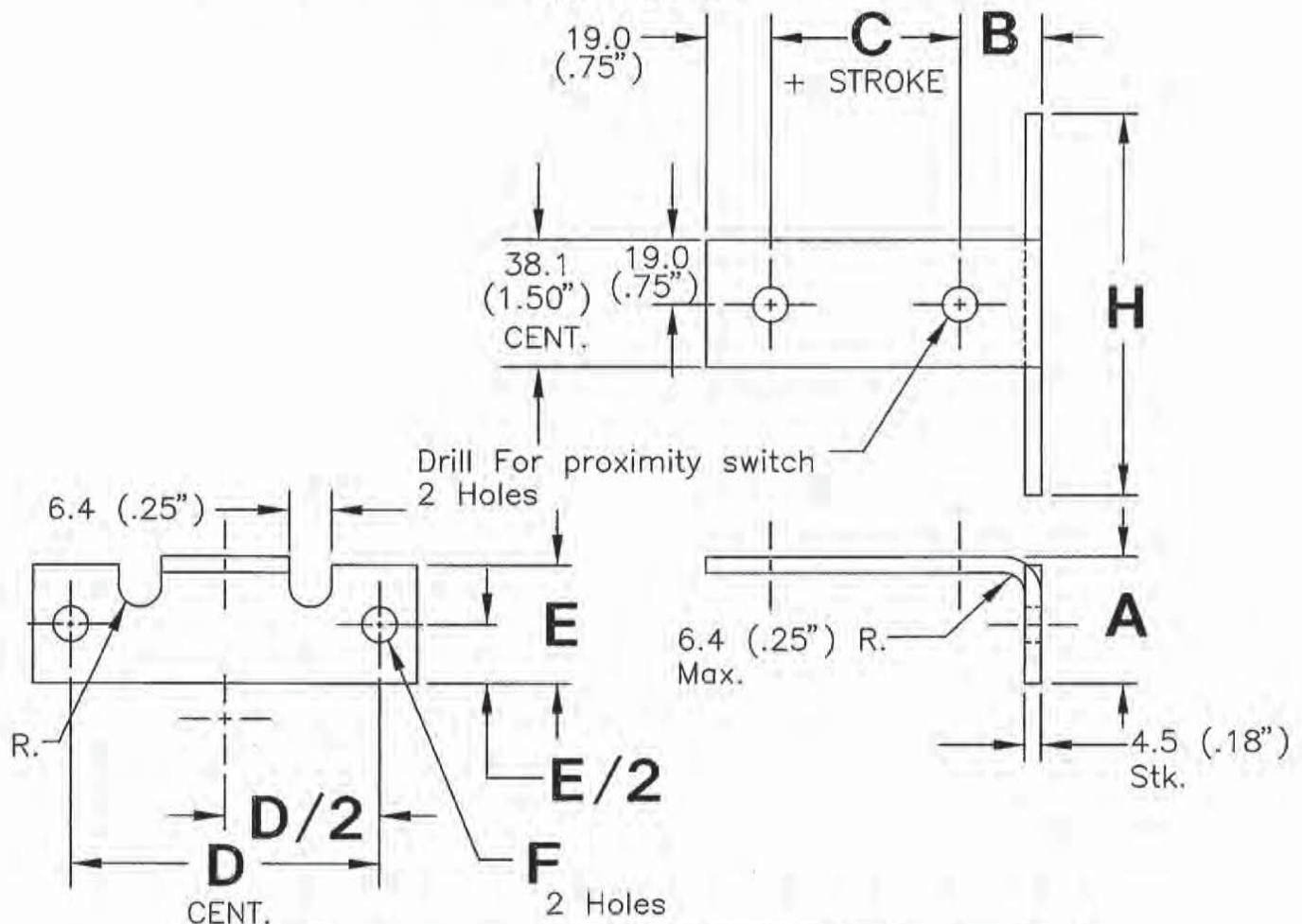
S = Material: Stainless Steel, Heat Treat: None, Finish: Natural Finish

NOTE: This Bracket Will Accommodate 8mm, 12mm & 18mm Proximity Switch's

Detail Standard Co.

METRIC CYLINDER MOUNT PROXIMITY SWITCH BRACKET

Type MCMP5B



Part No.	Cylinder Bore & Type	A	B	C	D	E	F	H
MCMP5B-109	80mm Bore, Air	38.1	85.0	50.0	72.0	27.4	6.8	99.4
MCMP5B-110	100mm Bore, Air	29.4	90.0	50.0	89.0	27.0	6.8	116.0
MCMP5B-111	125mm Bore, Air	25.9	105.0	50.0	110.0	29.0	8.8	139.0
MCMP5B-112	63mm Bore, Hyd.	38.1	90.0	50.0	64.3	25.7	12.8	90.0
MCMP5B-113	80mm Bore, Hyd.	38.1	90.0	50.0	82.7	32.3	16.8	115.0

Model Number Development

Metric Cylinder Proximity Switch Bracket

MCMP5B-109-50.0-18mm-C

Part Number _____
 Cylinder Stroke _____
 Proximity Switch Size _____
 Material _____

C = Material: 1018 C.R.S., Heat Treat: None, Finish: Black Oxide

A = Material: Aluminum, Heat Treat: None, Finish: Natural Finish

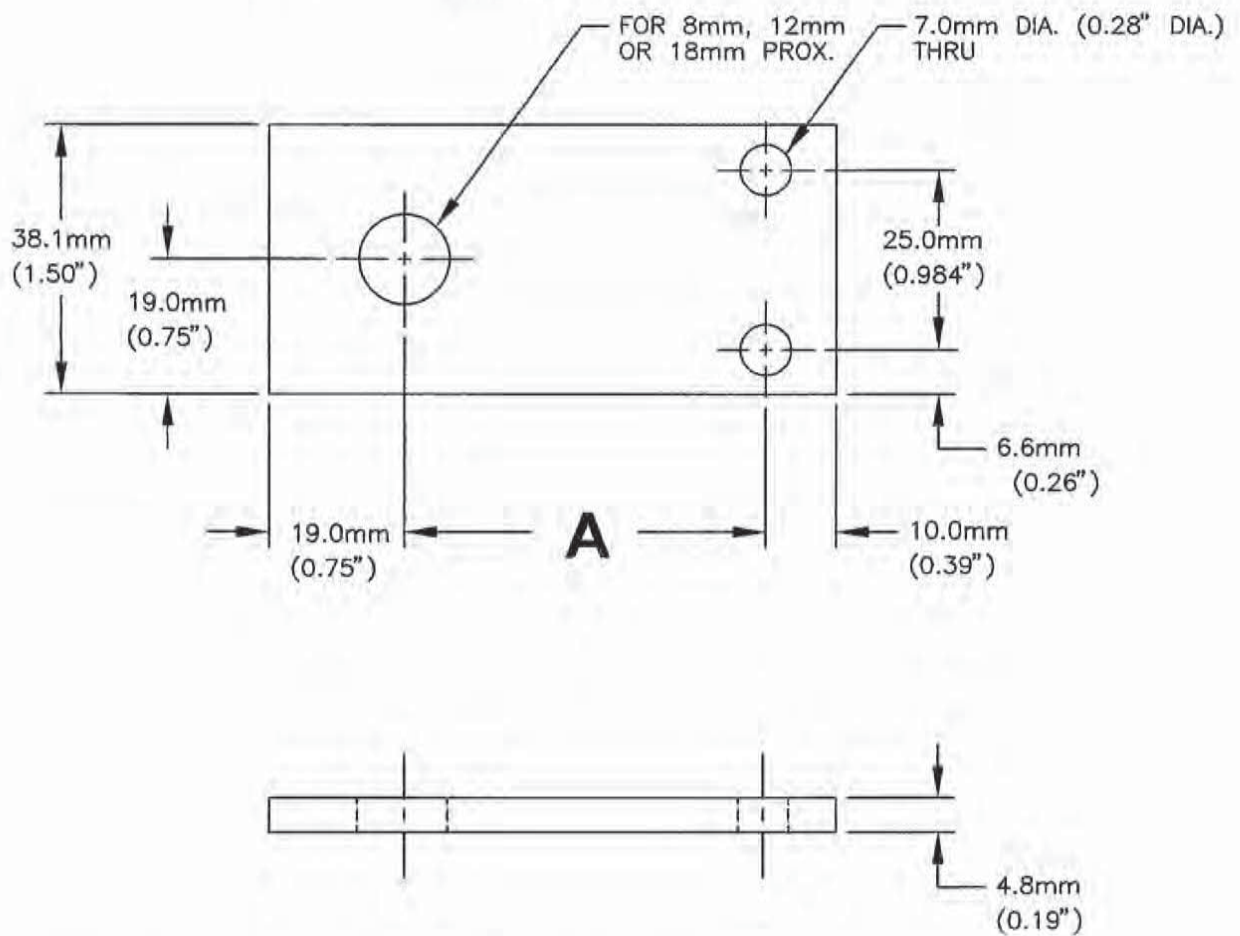
S = Material: Stainless Steel, Heat Treat: None, Finish: Natural Finish

NOTE: This Bracket Will Accommodate 8mm, 12mm & 18mm Proximity Switch's

Detail Standard Co.

STRIGHT PROX SWITCH BRACKET

Type SPSB-101

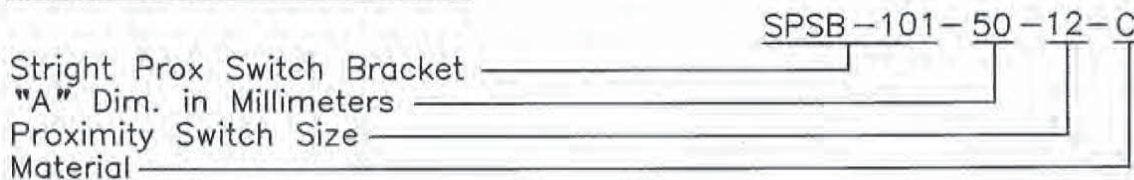


C = Material: 1018 C.R.S., Finish: Black Oxide

A = Material: Aluminum, Finish: Natural

S = Material: Stainless Steel, Finish: Natural

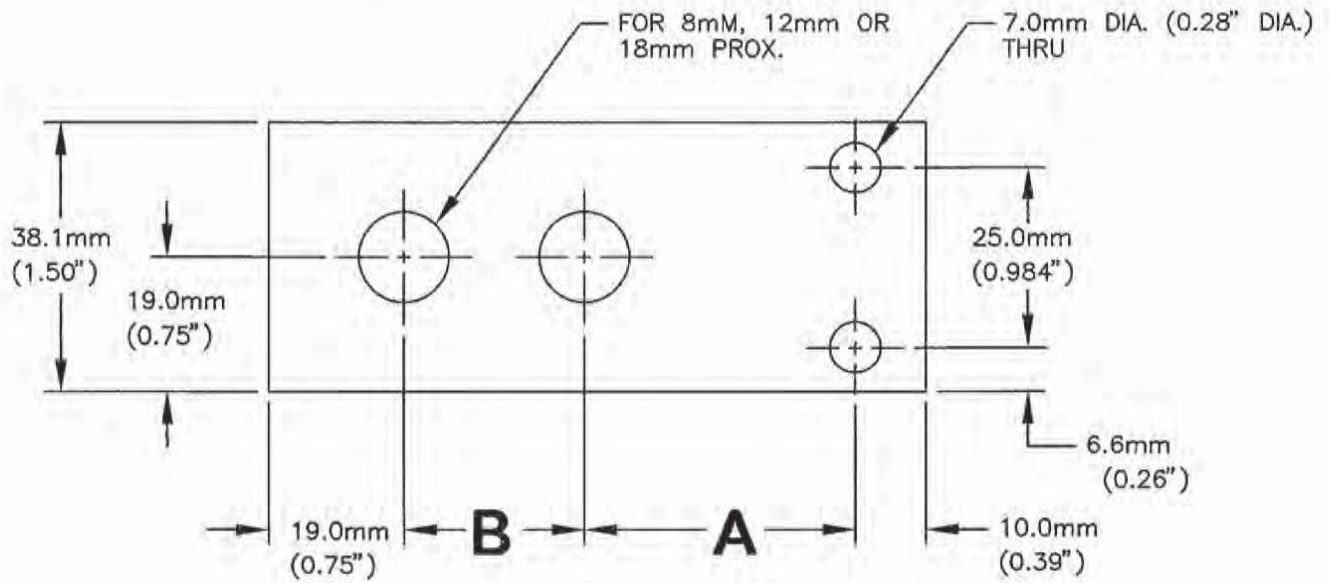
Model Number Development



Detail Standard Co.

STRIGHT PROX SWITCH BRACKET

Type SPSB-102

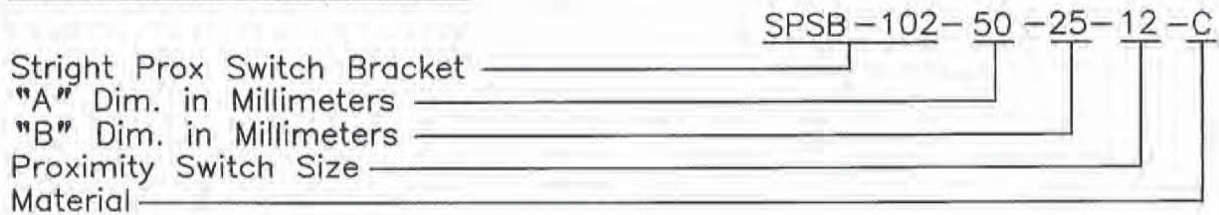


C = Material: 1018 C.R.S., Finish: Black Oxide

A = Material: Aluminum, Finish: Natural

S = Material: Stainless Steel, Finish: Natural

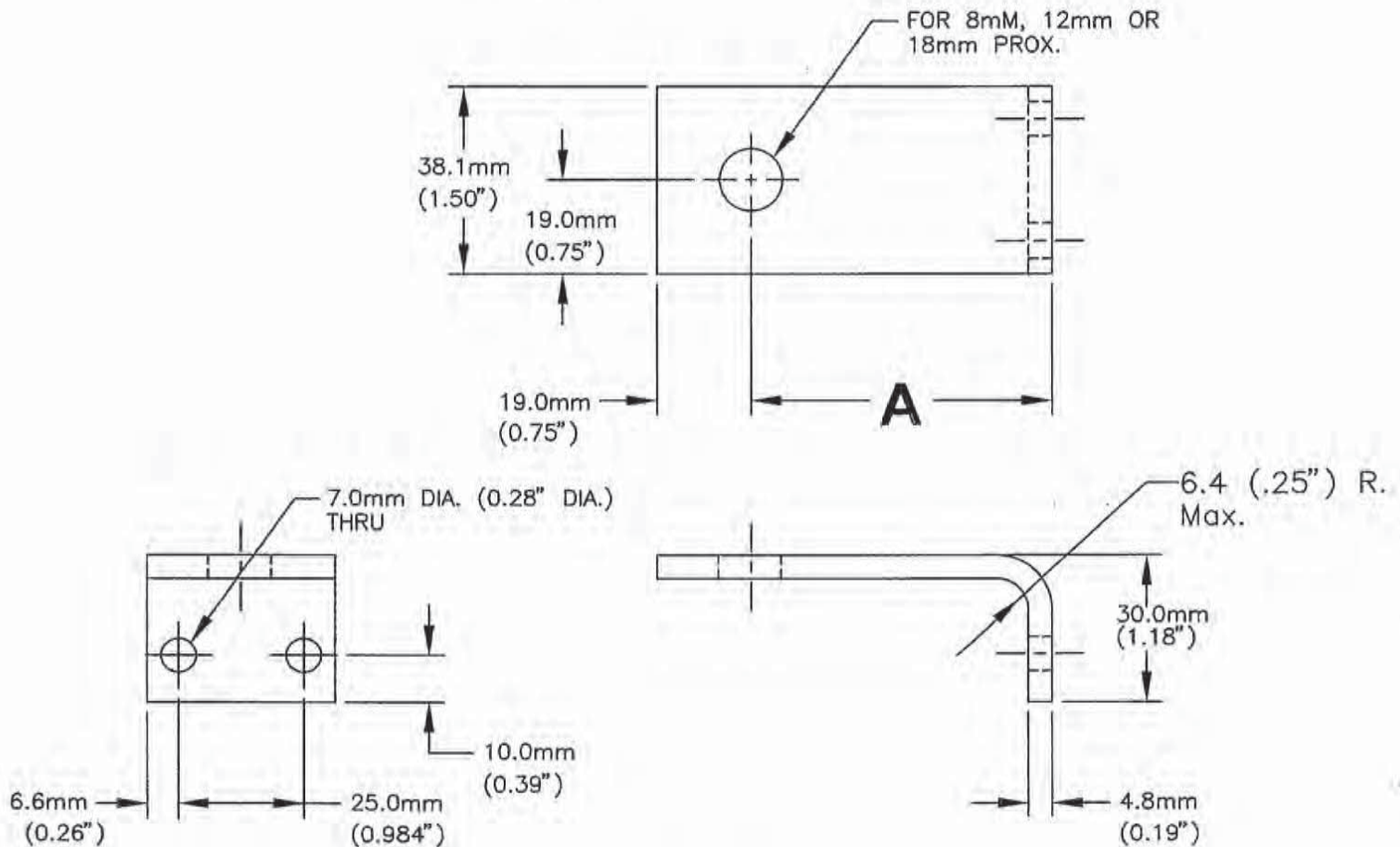
Model Number Development



Detail Standard Co.

BENT PROX SWITCH BRACKET

Type BPSB-101

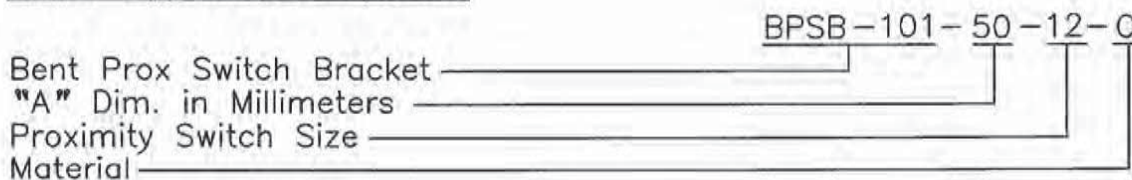


C = Material: 1018 C.R.S., Finish: Black Oxide

A = Material: Aluminum, Finish: Natural

S = Material: Stainless Steel, Finish: Natural

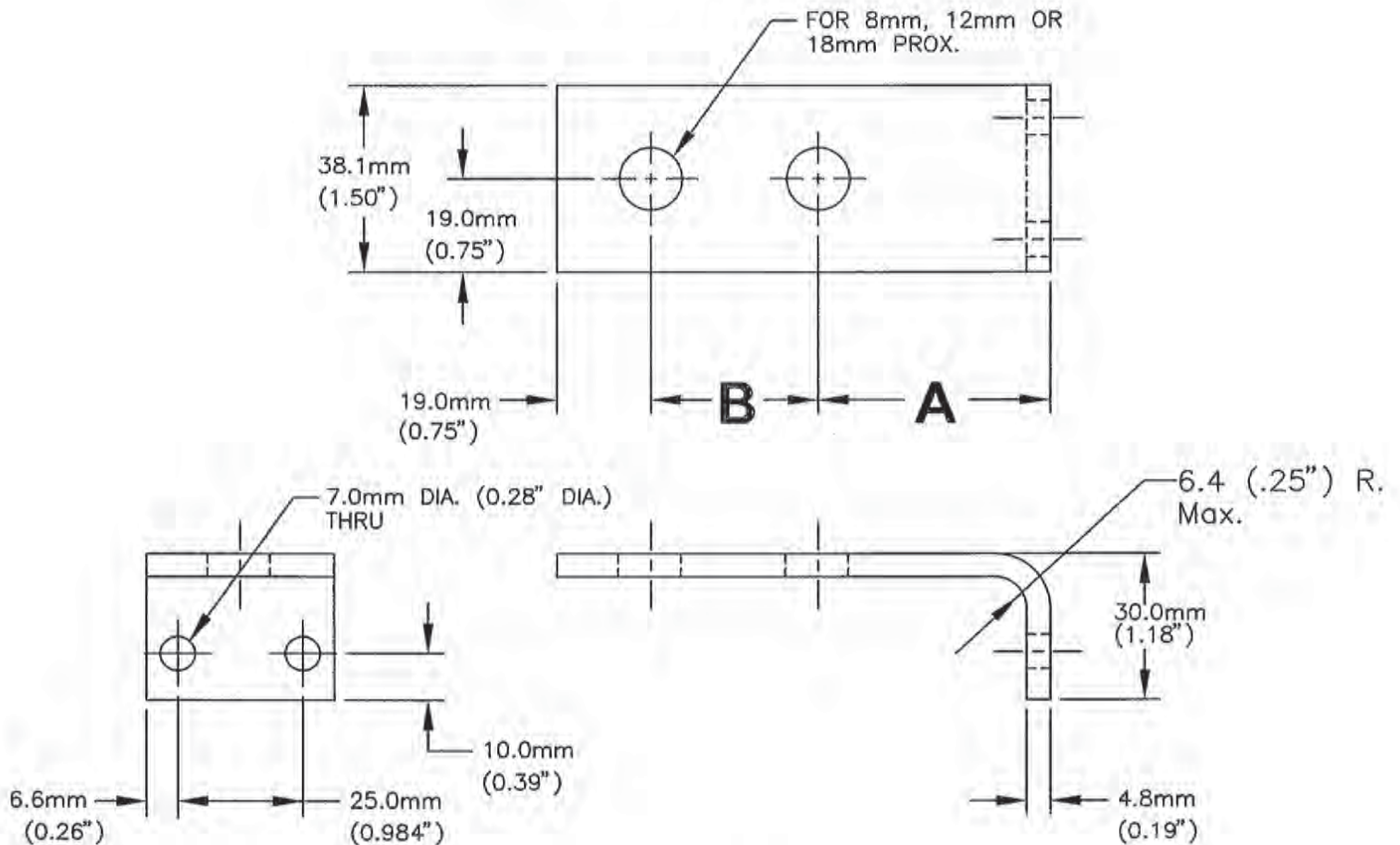
Model Number Development



Detail Standard Co.

BENT PROX SWITCH BRACKET

Type BPSB-102

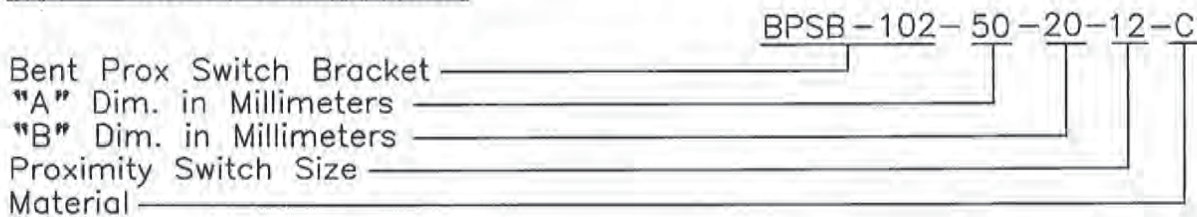


C = Material: 1018 C.R.S., Finish: Black Oxide

A = Material: Aluminum, Finish: Natural

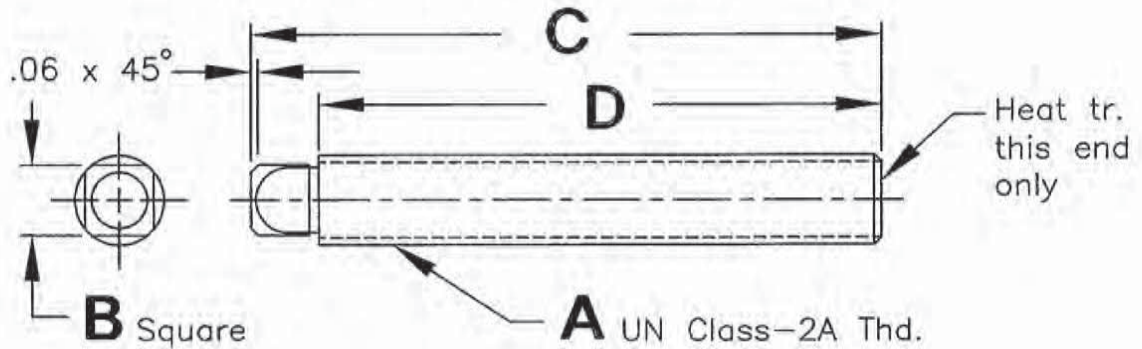
S = Material: Stainless Steel, Finish: Natural

Model Number Development

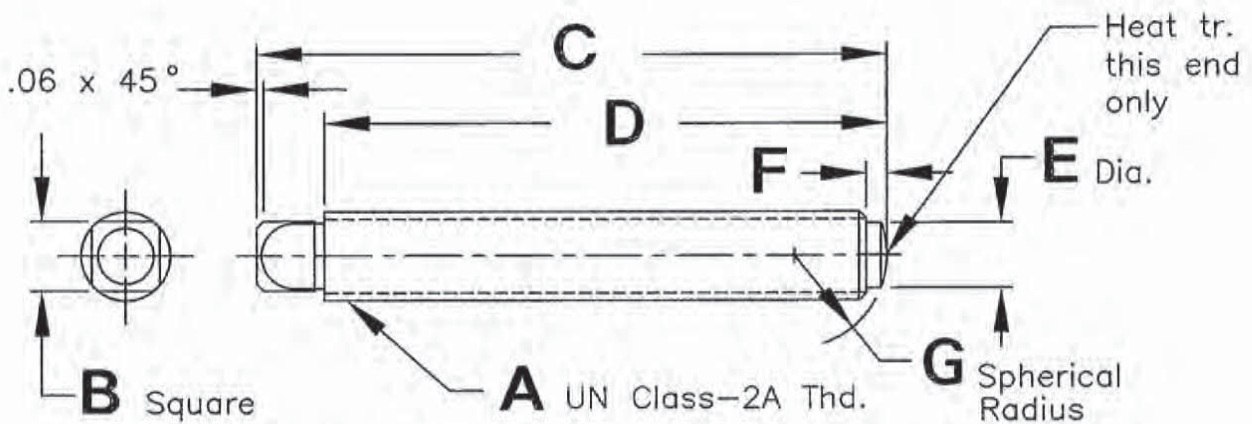


Detail Standard Co.

JACK SCREW/LEVELING SCREW



Part Number	A	B	C	D	Cad File No.
JS-3410-757	3/4-10	.53	7.57	7.00	JS34
JS-0108-775	1-8	.71	7.75	7.00	JS01
JS-11412-794	1 1/4-12	.88	7.94	7.00	JS114
JS-11212-812	1 1/2-12	1.06	8.12	6.50	JS112



Part Number	A	B	C	D	E	F	G	Cad File No.
JS-3410-706-R	3/4-10	.53	7.06	6.50	.58	.18	.56	JS34R
JS-0108-725-R	1-8	.71	7.25	6.50	.82	.26	.75	JS01R
JS-11412-744-R	1 1/4-12	.88	7.44	6.50	1.12	.28	.94	JS114R
JS-11212-762-R	1 1/2-12	1.06	7.62	6.50	1.25	.38	1.12	JS112R

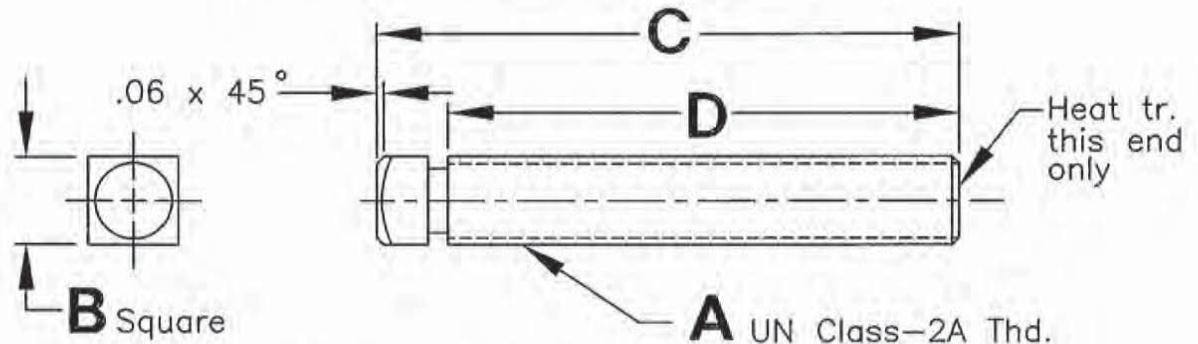
Material: 11L17

Heat treat as shown: Carb. & Hdn. Rock."C" 48-52,.03 Min. Case

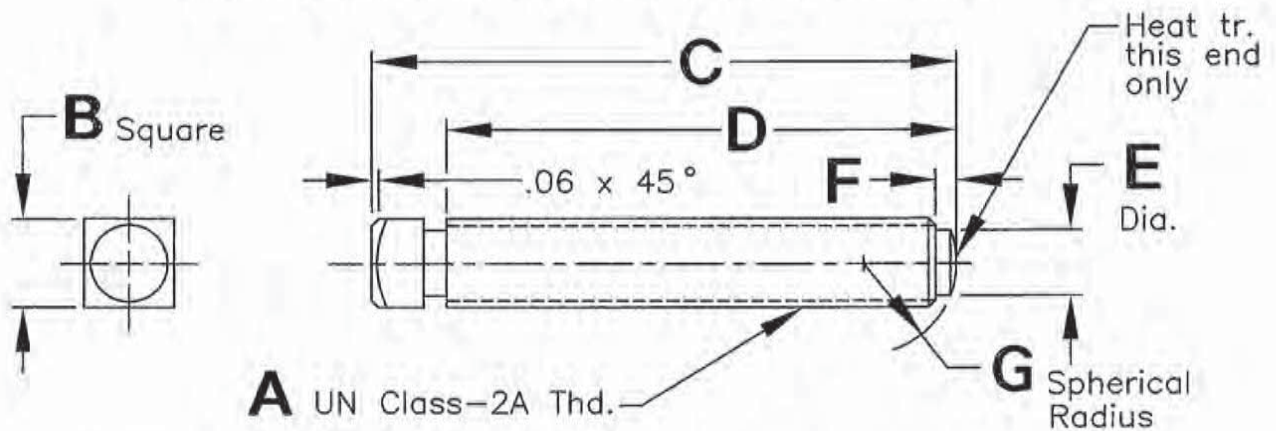
Finish: Black Oxide

Detail Standard Co.

JACK SCREW/LEVELING SCREW



Part Number	A	B	C	D	Cad File No.
LS-0108-7-F	1-8	1.00	7.00	6.38	LS01
LS-0112-7-F	1-12	1.00	7.00	6.38	LS0112
LS-11412-775-F	1 1/4-12	1.25	7.75	6.82	LS114
LS-0114-7-F	1-14	1.00	7.00	6.38	LS0114
LS-3410-7-F	3/4-10	1.00	7.00	6.38	LS34
LS-3416-7-F	3/4-16	1.00	7.00	6.38	LS3416
LS-3410-8-F	3/4-10	1.00	8.62	8.00	LS34-8



Part Number	A	B	C	D	E	F	G	Cad File No.
LS-0108-7-R	1-8	1.00	7.00	6.38	.82	.26	1.00	LS01R
LS-0112-7-R	1-12	1.00	7.00	6.38	.82	.26	1.00	LS0112R
LS-11412-775-R	1 1/4-12	1.25	7.75	6.82	1.12	.28	1.00	LS114R
LS-0114-7-R	1-14	1.00	7.00	6.38	.82	.26	1.00	LS0114R
LS-3410-7-R	3/4-10	1.00	7.00	6.38	.58	.26	1.00	LS34R
LS-3416-7-R	3/4-16	1.00	7.00	6.38	.58	.26	1.00	LS3416R
LS-3410-8-R	3/4-10	1.00	8.62	8.00	.58	.26	1.00	LS34-8R

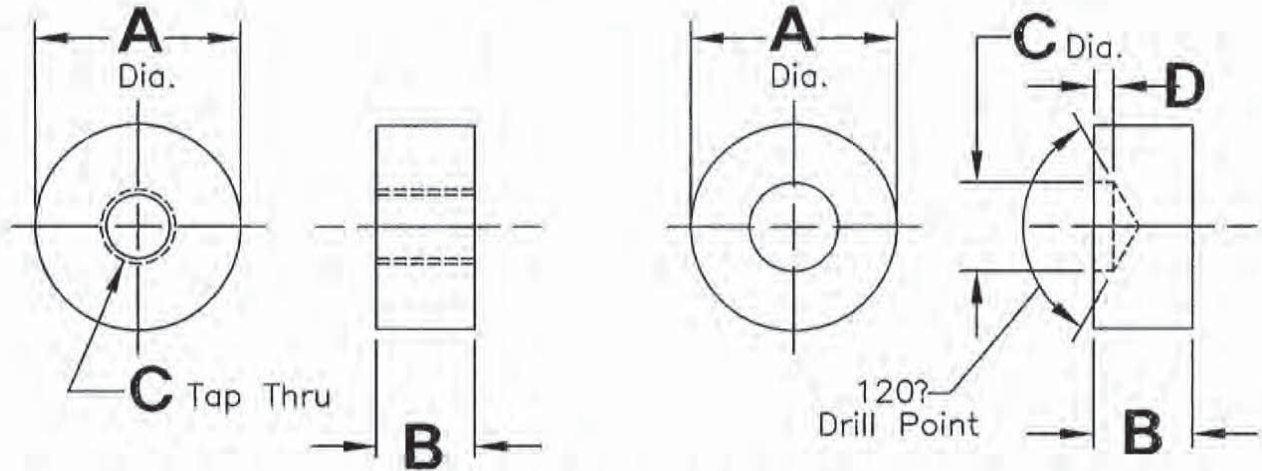
Material: 11L17

Heat treat as shown: Carb. & Hdn. Rock."C" 48-52,.03 Min. Case

Finish: Black Oxide

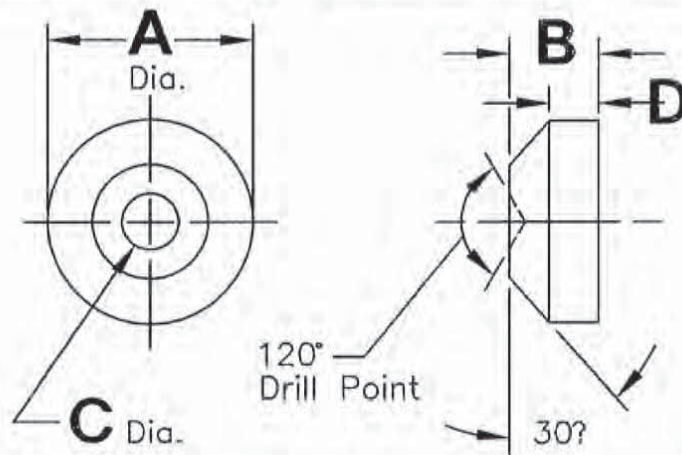
Detail Standard Co.

LEVELING SCREW PADS



Part Number	A	B	C	Cad File No.
LSP-01-T	2.50	1.50	3/4-10	LSP01T
LSP-02-T	2.50	1.50	1-8	LSP02T
LSP-03-T	3.00	1.50	1 1/4-12	LSP03T
LSP-04-T	3.50	1.50	1 1/2-12	LSP04T

Part Number	A	B	C	D	Cad File No.
LSP-01-H	2.50	1.50	.88	.25	LSP01H
LSP-02-H	2.50	1.50	1.12	.25	LSP02H
LSP-03-H	3.00	1.50	1.38	.25	LSP03H
LSP-04-H	3.50	1.50	1.62	.25	LSP04H



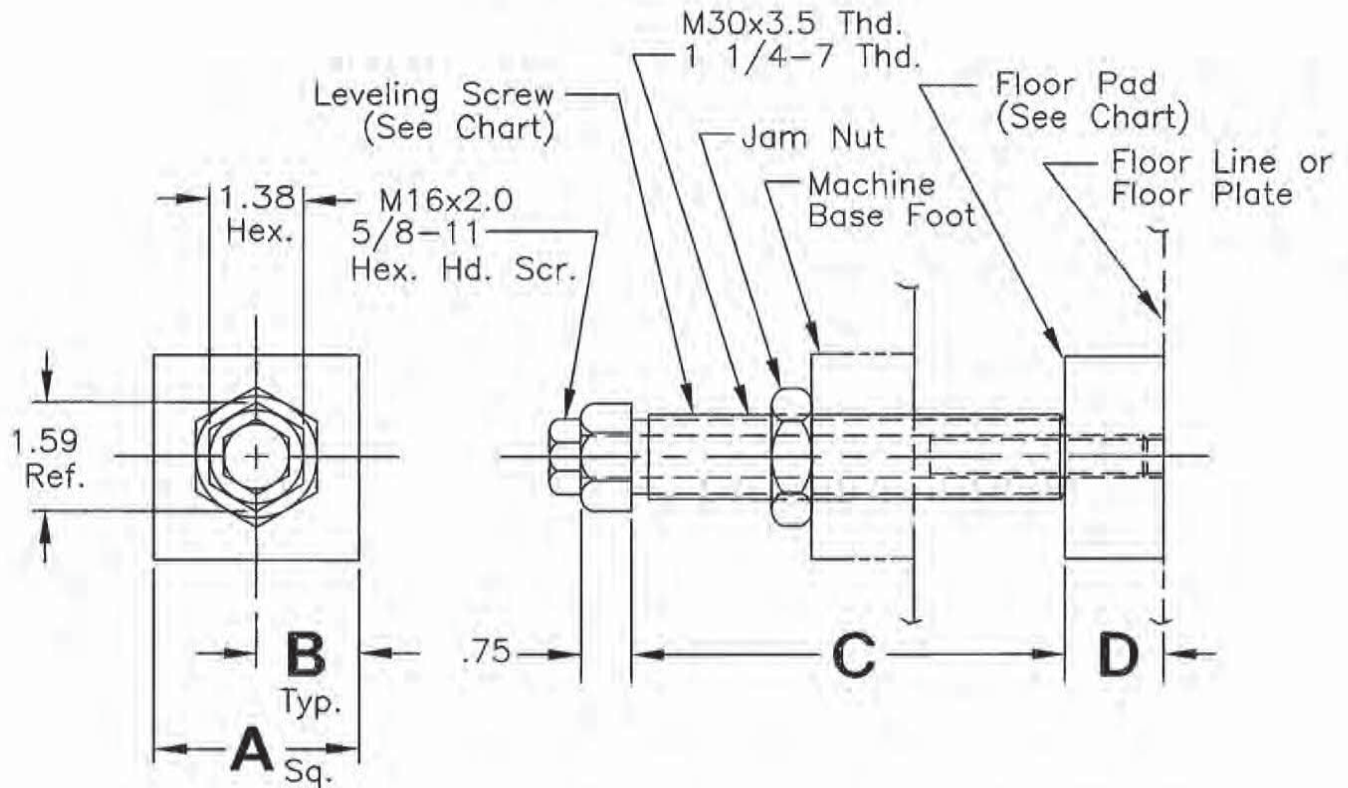
Part Number	A	B	C	D	Cad File No.
LSP-01-CH	5.00	1.50	1.25	.75	LSP01CH

Material: Steel
Finish: Black Oxide

Detail Standard Co.

HOLD DOWN/LEVELING SCREW ASSEMBLY

Type HL & MHL



Metric Part Number	English Part Number	A	B	C	D	Floor Pad	Leveling Screw	CAD FILE NO.
MHL-76-102	HL-3-4	3.00	1.50	4.00	1.00	STP-12	HLB-4-C	HL34
	HL-3A-4	3.00	1.50	4.00	1.25	STP-13	HLB-4-C	HL3A4
MHL-102-102	HL-4-4	4.00	2.00	4.00	1.00	STP-14	HLB-4-C	HL44
	HL-4A-4	4.00	2.00	4.00	1.25	STP-15	HLB-4-C	HL4A4
MHL-76-127	HL-3-5	3.00	1.50	5.00	1.00	STP-12	HLB-5-C	HL35
	HL-3A-5	3.00	1.50	5.00	1.25	STP-13	HLB-5-C	HL3A5
MHL-102-127	HL-4-5	4.00	2.00	5.00	1.00	STP-14	HLB-5-C	HL45
	HL-4A-5	4.00	2.00	5.00	1.25	STP-15	HLB-5-C	HL4A5
MHL-76-152	HL-3-6	3.00	1.50	6.00	1.00	STP-12	HLB-6-C	HL36
	HL-3A-6	3.00	1.50	6.00	1.25	STP-13	HLB-6-C	HL3A6
MHL-102-152	HL-4-6	4.00	2.00	6.00	1.00	STP-14	HLB-6-C	HL46
	HL-4A-6	4.00	2.00	6.00	1.25	STP-15	HLB-6-C	HL4A6

Each Hold Down/Leveling Screw Assy. Includes:

- (1) Leveling Bolt
- (1) Hold Down Screw
- (1) Floor Pad
- (1) Jam Nut

Material: Steel

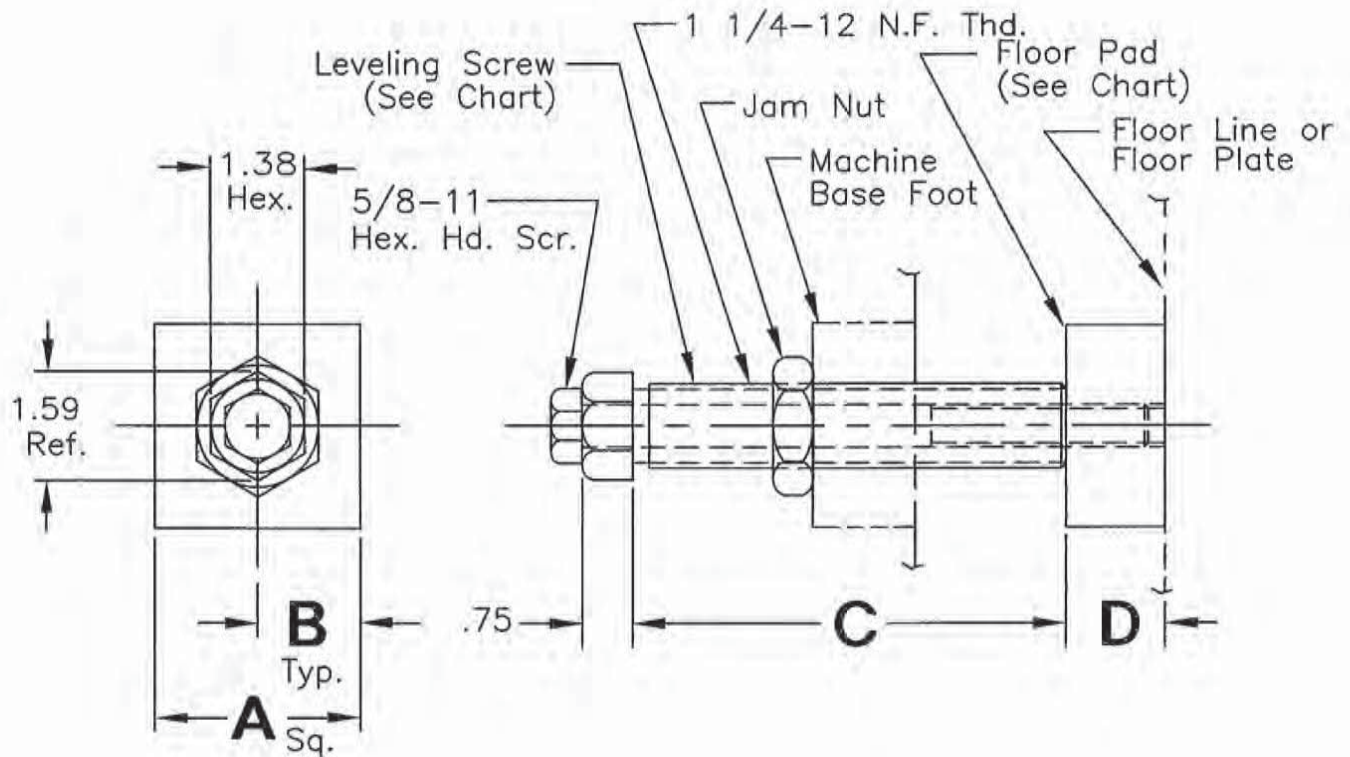
Finish: Black Oxide

Note: All Dimensions for Metric are the Same as English Except as Noted.

Detail Standard Co.

HOLD DOWN/LEVELING SCREW ASSEMBLY

Type HLF



Part Number	A	B	C	D	Floor Pad	Leveling Screw	CAD FILE NO.
HLF-3-4	3.00	1.50	4.00	1.00	STP-12	HLB-4-F	HLF34
HLF-3A-4	3.00	1.50	4.00	1.25	STP-13	HLB-4-F	HLF3A4
HLF-4-4	4.00	2.00	4.00	1.00	STP-14	HLB-4-F	HLF44
HLF-4A-4	4.00	2.00	4.00	1.25	STP-15	HLB-4-F	HLF4A4
HLF-3-5	3.00	1.50	5.00	1.00	STP-12	HLB-5-F	HLF35
HLF-3A-5	3.00	1.50	5.00	1.25	STP-13	HLB-5-F	HLF3A5
HLF-4-5	4.00	2.00	5.00	1.00	STP-14	HLB-5-F	HLF45
HLF-4A-5	4.00	2.00	5.00	1.25	STP-15	HLB-5-F	HLF4A5
HLF-3-6	3.00	1.50	6.00	1.00	STP-12	HLB-6-F	HLF36
HLF-3A-6	3.00	1.50	6.00	1.25	STP-13	HLB-6-F	HLF3A6
HLF-4-6	4.00	2.00	6.00	1.00	STP-14	HLB-6-F	HLF46
HLF-4A-6	4.00	2.00	6.00	1.25	STP-15	HLB-6-F	HLF4A6

Each Hold Down/Leveling Screw Assy. Includes:

- (1) Leveling Bolt
- (1) Hold Down Screw
- (1) Floor Pad
- (1) Jam Nut

Material: Steel

Finish: Black Oxide

Detail Standard Co.

HOLD DOWN/LEVELING SCREW ASSEMBLY CROSS REFERANCE MATREX

INCH

Detail Standard Company	E & E Special Products
LSA-1-2	ELJ-7502-AM
LSA-2-3.1	ELJ-1003-AM
LSA-3-3	ELJ-1123-AM
LSA-3-5	ELJ-1125-AM
LSA-7-3	ELJ-1503-AM
LSA-4-5	ELJ-1505-AM
LS-2015-50	ELJ-7502-A
LS-2025-50	ELJ-1003-A
LS-2420-75	ELJ-1123-A
LS-2430-75	ELJ-1125-A
LS-3020-100	ELJ-1503-A
LS-3035-100	ELJ-1505-A

METRIC

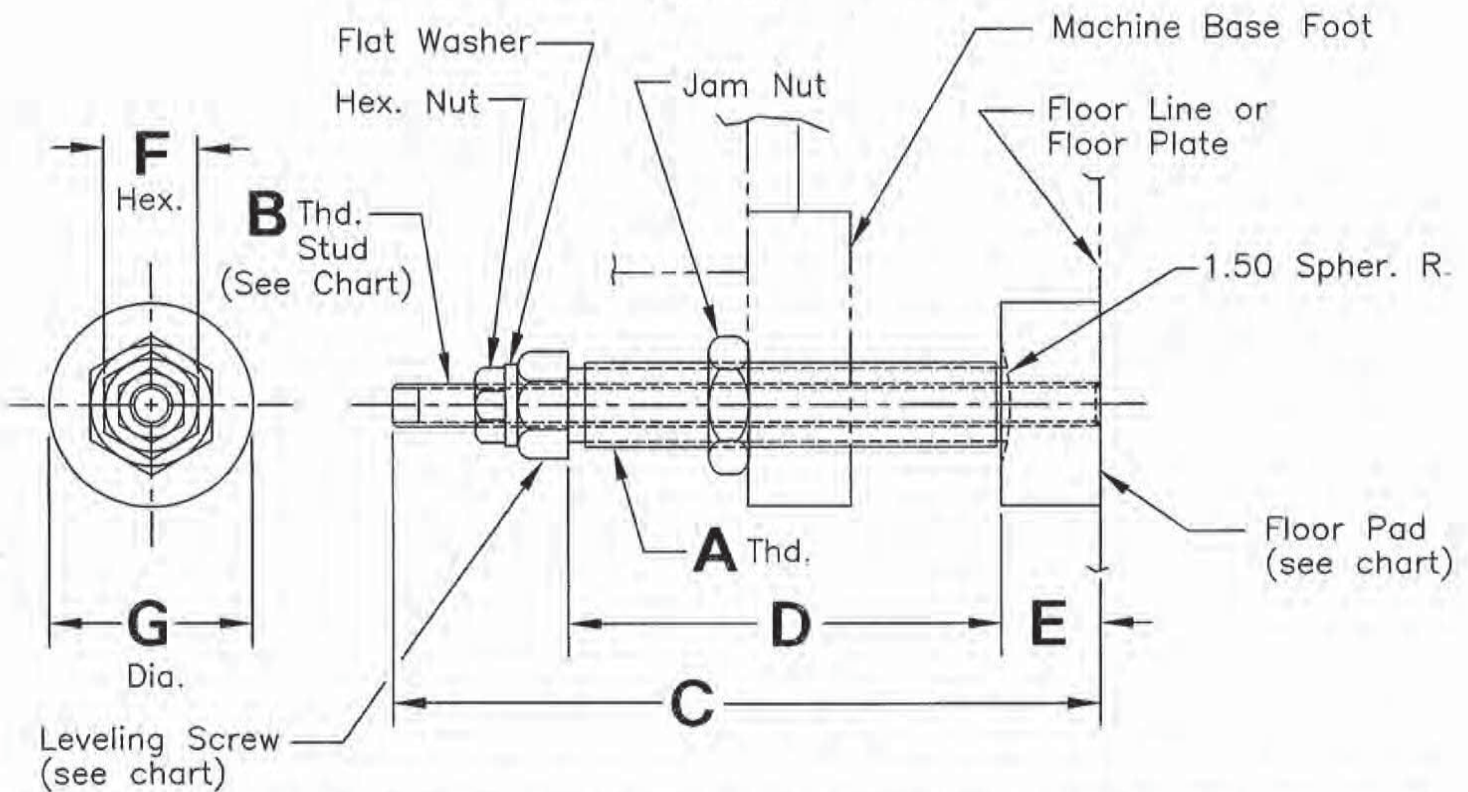
Detail Standard Company	E & E Special Products
MLSA-2015-50	EMLJ-2050-FAM
MLSA-2025-50	EMLJ-2050-CAM
MLSA-2420-75	EMLJ-2475-FAM
MLSA-2430-75	EMLJ-2475-CAM
MLSA-3020-100	EMLJ-3010-FAM
MLSA-3035-100	EMLJ-3010-CAM
MLSA-3020-150	EMLJ-3015-FAM
MLSA-3035-150	EMLJ-3015-CAM
MLSA-3630-100	EMLJ-3610-FAM
MLSA-3640-100	EMLJ-3610-CAM
MLSA-3630-150	EMLJ-3615-FAM
MLSA-3640-150	EMLJ-3615-CAM
MLSA-3930-100	EMLJ-3910-FAM
MLSA-3940-100	EMLJ-3910-CAM
MLSA-3930-150	EMLJ-3915-FAM
MLSA-3940-150	EMLJ-3915-CAM
MLS-2015-50	EMLJ-2050-FA
MLS-2025-50	EMLJ-2050-CA
MLS-2420-75	EMLJ-2475-FA
MLS-2430-75	EMLJ-2475-CA
MLS-3020-100	EMLJ-3010-FA
MLS-3035-100	EMLJ-3010-CA
MLS-3020-150	EMLJ-3015-FA
MLS-3035-150	EMLJ-3015-CA
MLS-3630-100	EMLJ-3610-FA
MLS-3640-100	EMLJ-3610-CA
MLS-3630-150	EMLJ-3615-FA
MLS-3640-150	EMLJ-3615-CA
MLS-3930-100	EMLJ-3910-FA
MLS-3940-100	EMLJ-3910-CA
MLS-3930-150	EMLJ-3915-FA
MLS-3940-150	EMLJ-3915-CA

NOTE: All Dimensions are from E & E Special Products Catalog Pages D-3 & E-39.

Detail Standard Co.

HOLD DOWN/LEVELING SCREW ASSEMBLY

Type LSA



Part Number	A	B	C	D	E	F	G	Floor Pad	Stud	Leveling Screw	CAD FILE NO.
LSA-1-4	3/4-16	3/8-16	7.00	4.00	1.00	.88	2.00	F-20	S-1-70	LS-1-4	LSA14
LSA-2-4	1-14	1/2-13	7.00	4.00	1.00	1.12	2.25	F-22	S-2-70	LS-2-4	LSA24
LSA-2-5	1-14	1/2-13	8.00	5.00	1.00	1.12	2.25	F-22	S-2-80	LS-2-5	LSA25
LSA-3-5	1 1/8-12	1/2-13	8.50	5.00	1.25	1.25	2.50	F-25	S-3-85	LS-3-5	LSA35
LSA-3-6	1 1/8-12	1/2-13	9.50	6.00	1.25	1.25	2.50	F-25	S-3-95	LS-3-6	LSA36
LSA-4-5	1 1/4-7	5/8-11	8.50	5.00	1.25	1.38	2.50	F-26	S-4-85	LS-4-5	LSA45
LSA-4-6	1 1/4-7	5/8-11	9.50	6.00	1.25	1.38	2.50	F-26	S-4-95	LS-4-6	LSA46
LSA-5-5	1 1/4-12	5/8-11	8.50	5.00	1.25	1.38	2.50	F-26	S-4-85	LS-5-5	LSA55
LSA-5-6	1 1/4-12	5/8-11	9.50	6.00	1.25	1.38	2.50	F-26	S-4-95	LS-5-6	LSA56
LSA-6-5	1 1/2-6	5/8-11	9.00	5.00	1.25	1.62	2.50	F-26	S-4-90	LS-6-5	LSA65
LSA-7-5	1 1/2-12	5/8-11	9.00	5.00	1.25	1.62	2.50	F-26	S-4-90	LS-7-5	LSA75
LSA-7-6	1 1/2-12	5/8-11	10.00	6.00	1.25	1.62	2.50	F-26	S-4-100	LS-7-6	LSA76

Each Hold Down/Leveling Screw Assy. Includes:

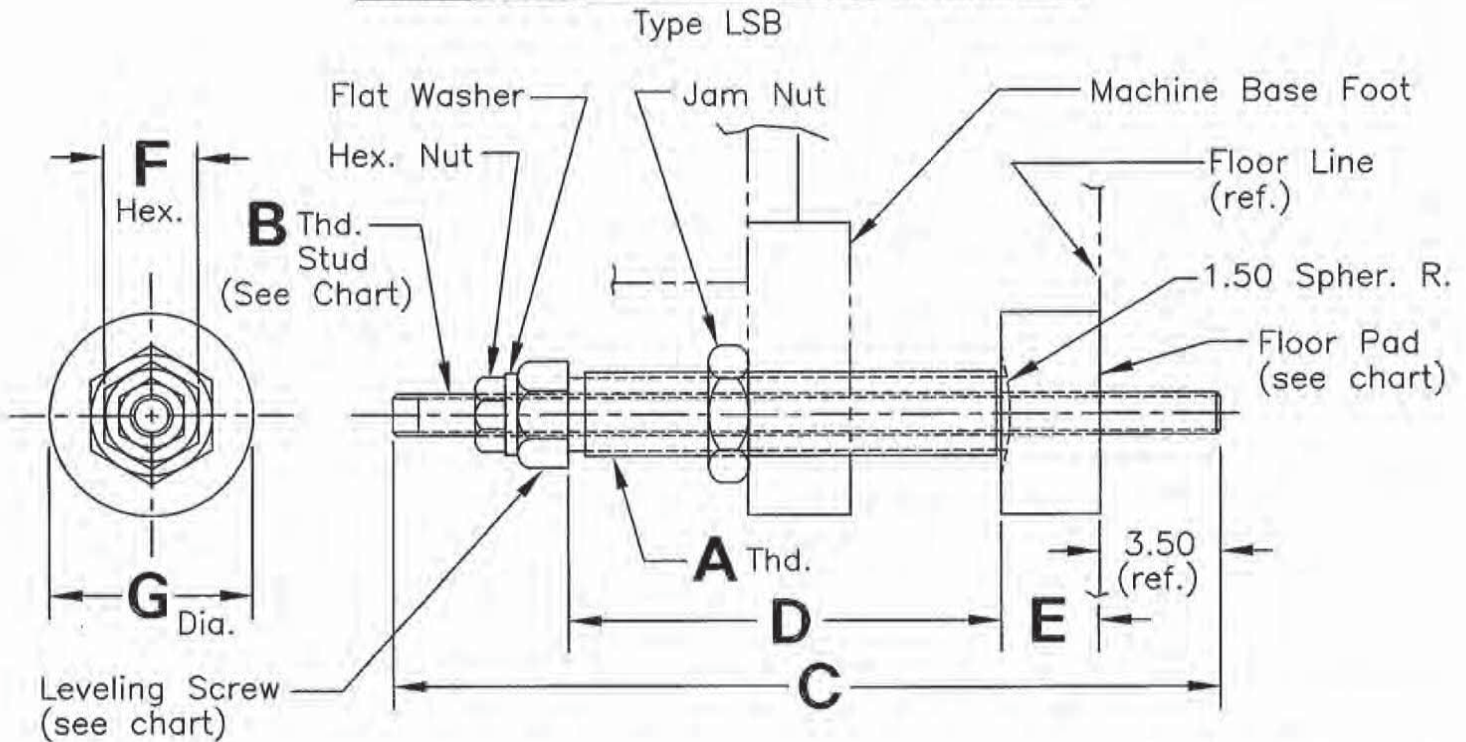
- (1) Leveling Screw
- (1) Floor Pad
- (1) Stud
- (1) Flat Washer
- (1) Hex. Nut
- (1) Jam Nut

Material: Steel

Finish: Black Oxide

Detail Standard Co.

HOLD DOWN/LEVELING SCREW ASSEMBLY



Part Number	A	B	C	D	E	F	G	Floor Pad	Stud	Leveling Screw	CAD FILE NO.
LSB-1-4	3/4-16	3/8-16	10.50	4.00	1.00	.88	2.00	F-20	S-1-105	LS-1-4	LSB14
LSB-2-4	1-14	1/2-13	10.50	4.00	1.00	1.12	2.25	F-22	S-2-105	LS-2-4	LSB24
LSB-2-5	1-14	1/2-13	11.50	5.00	1.00	1.12	2.25	F-22	S-2-115	LS-2-5	LSB25
LSB-3-3	1 1/8-12	1/2-13	10.00	3.00	1.25	1.25	2.50	F-25	S-3-100	LS-3-3	LSB33
LSB-3-5	1 1/8-12	1/2-13	12.00	5.00	1.25	1.25	2.50	F-25	S-3-120	LS-3-5	LSB35
LSB-3-6	1 1/8-12	1/2-13	13.00	6.00	1.25	1.25	2.50	F-25	S-3-130	LS-3-6	LSB36
LSB-4-5	1 1/4-7	5/8-11	12.00	5.00	1.25	1.38	2.50	F-26	S-4-120	LS-4-5	LSB45
LSB-4-6	1 1/4-7	5/8-11	13.00	6.00	1.25	1.38	2.50	F-26	S-4-130	LS-4-6	LSB46
LSB-5-5	1 1/4-12	5/8-11	12.00	5.00	1.25	1.38	2.50	F-26	S-4-120	LS-5-5	LSB55
LSB-5-6	1 1/4-12	5/8-11	13.00	6.00	1.25	1.38	2.50	F-26	S-4-130	LS-5-6	LSB56
LSB-6-5	1 1/2-6	5/8-11	12.50	5.00	1.25	1.62	2.50	F-26	S-4-125	LS-6-5	LSB65
LSB-7-5	1 1/2-12	5/8-11	12.50	5.00	1.25	1.62	2.50	F-26	S-4-125	LS-7-5	LSB75
LSB-7-6	1 1/2-12	5/8-11	13.50	6.00	1.25	1.62	2.50	F-26	S-4-135	LS-7-6	LSB76
LSB-8-3	1 1/8-12	1/2-13	10.00	3.00	1.25	1.12	2.50	F-25	S-3-100	LS-8-3	LSB83
LSB-8-5	1 1/8-12	1/2-13	12.00	5.00	1.25	1.12	2.50	F-25	S-3-120	LS-8-5	LSB85

Each Hold Down/Leveling Screw Assy. Includes:

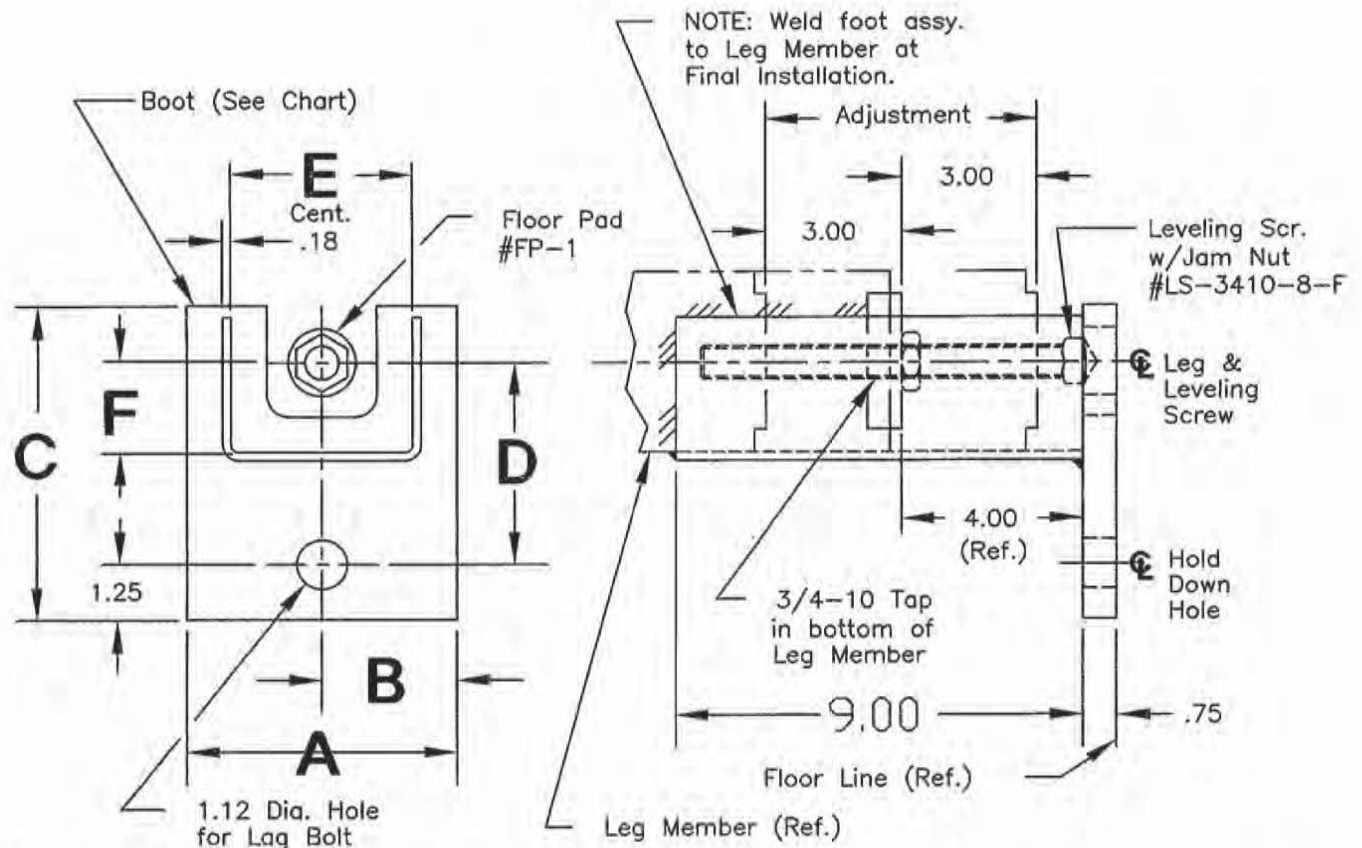
- (1) Leveling Screw
- (1) Floor Pad
- (1) Stud
- (1) Flat Washer
- (1) Hex. Nut
- (1) Jam Nut

Material: Steel
Finish: Black Oxide

Detail Standard Co.

FOOT ASSEMBLY

Type FA



Part No.	Leg Member Size	A	B	C	D	E	F	Boot	Floor Pad	Leveling Screw	CAD FILE NO.
FA-2-2	2 X 2	3.50	1.75	5.50	3.50	2.03	1.00	B-2-2	FP-1	LS-3410-8-F	FA22
FA-2.5-2.5	2 1/2 X 2 1/2	4.00	2.00	6.00	3.75	2.53	1.25	B-2.5-2.5	FP-1	LS-3410-8-F	FA2525
FA-3-2	3 X 2	5.00	2.50	5.50	3.50	3.03	1.00	B-3-2	FP-1	LS-3410-8-F	FA32
FA-3-3	3 X 3	5.00	2.50	6.50	4.00	3.03	1.50	B-3-3	FP-1	LS-3410-8-F	FA33
FA-4-2	4 X 2	6.00	3.00	5.50	3.50	4.03	1.00	B-4-2	FP-1	LS-3410-8-F	FA42
FA-4-3	4 X 3	6.00	3.00	6.50	4.00	4.03	1.50	B-4-3	FP-1	LS-3410-8-F	FA43
FA-4-4	4 X 4	6.00	3.00	7.00	4.50	4.03	2.00	B-4-4	FP-1	LS-3410-8-F	FA44
FA-6-3	6 X 3	7.50	3.75	6.50	4.00	6.03	1.50	B-6-3	FP-1	LS-3410-8-F	FA63
FA-6-4	6 X 4	7.50	3.75	7.00	4.50	6.03	2.00	B-6-4	FP-1	LS-3410-8-F	FA64
FA-6-6	6 X 6	7.50	3.75	8.00	5.50	6.03	3.00	B-6-6	FP-1	LS-3410-8-F	FA66

Each Foot Assy. Includes:

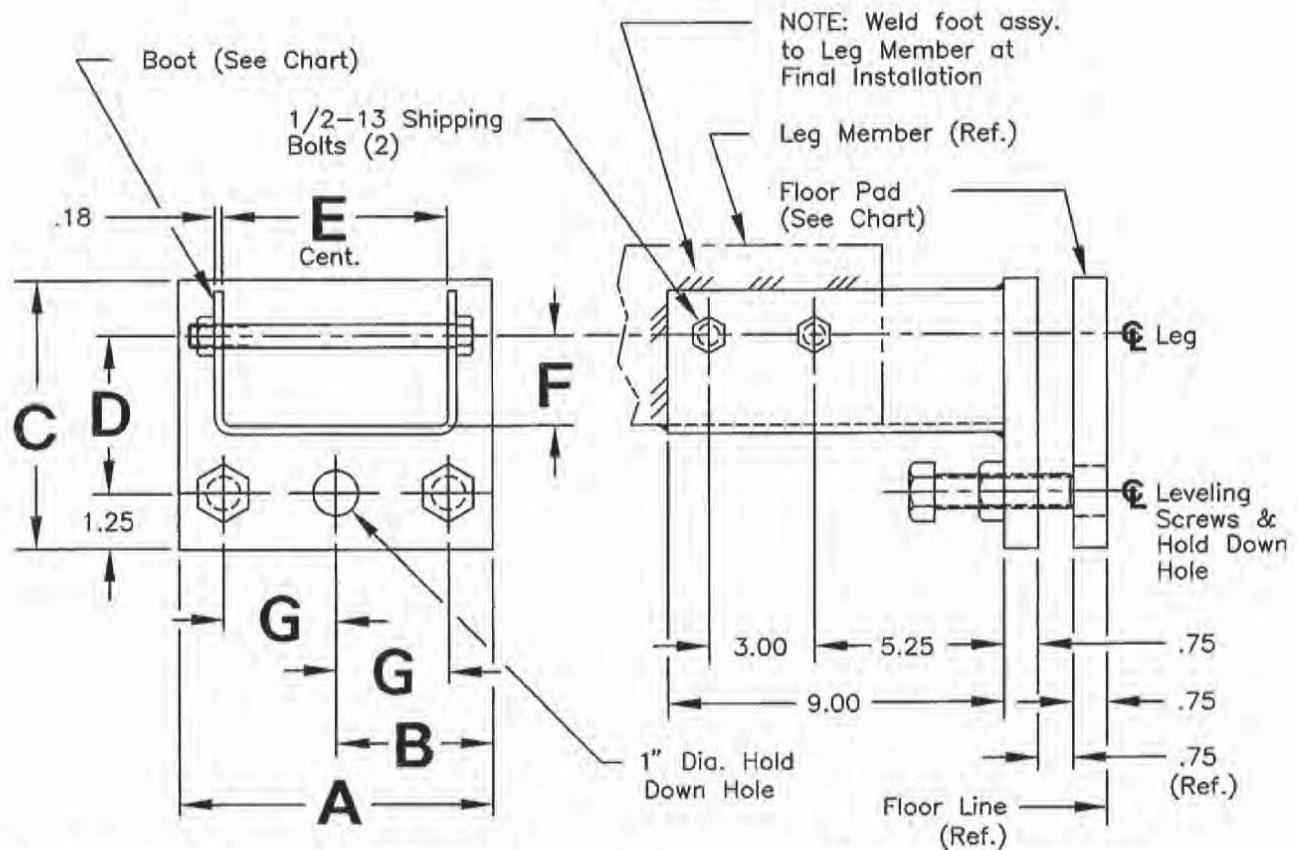
- (1) Boot - Welded Construction
- (1) Floor Pad - Steel
- (1) Leveling Screw Assy. with Jam Nut

Finish: None (Cust. to finish as req'd.)

Detail Standard Co.

FOOT ASSEMBLY

Type FB



Part No.	Leg Member Size	A	B	C	D	E	F	G	Boot	Floor Pad	CAD FILE NO.
FB-2-2	2 X 2	6.00	3.00	5.00	2.75	2.03	1.00	2.00	C-2-2	E-6-5	FB22
FB-2.5-2.5	2 1/2 X 2 1/2	6.00	3.00	5.50	3.00	2.53	1.25	2.00	C-2.5-2.5	E-6-5.5	FB2525
FB-3-2	3 X 2	6.00	3.00	5.00	2.75	3.03	1.00	2.00	C-3-2	E-6-5	FB32
FB-3-3	3 X 3	6.00	3.00	6.00	3.25	3.03	1.50	2.00	C-3-3	E-6-6	FB33
FB-4-2	4 X 2	6.00	3.00	5.00	2.75	4.03	1.00	2.00	C-4-2	E-6-5	FB42
FB-4-3	4 X 3	6.00	3.00	6.00	3.25	4.03	1.50	2.00	C-4-3	E-6-6	FB43
FB-4-4	4 X 4	6.00	3.00	6.00	3.75	4.03	2.00	2.00	C-4-4	E-6-6	FB44
FB-6-3	6 X 3	8.00	4.00	6.00	3.25	6.03	1.50	3.00	C-6-3	E-8-6	FB63
FB-6-4	6 X 4	8.00	4.00	6.00	3.75	6.03	2.00	3.00	C-6-4	E-8-6	FB64
FB-6-6	6 X 6	8.00	4.00	7.00	4.75	6.03	3.00	3.00	C-6-6	E-8-7	FB66

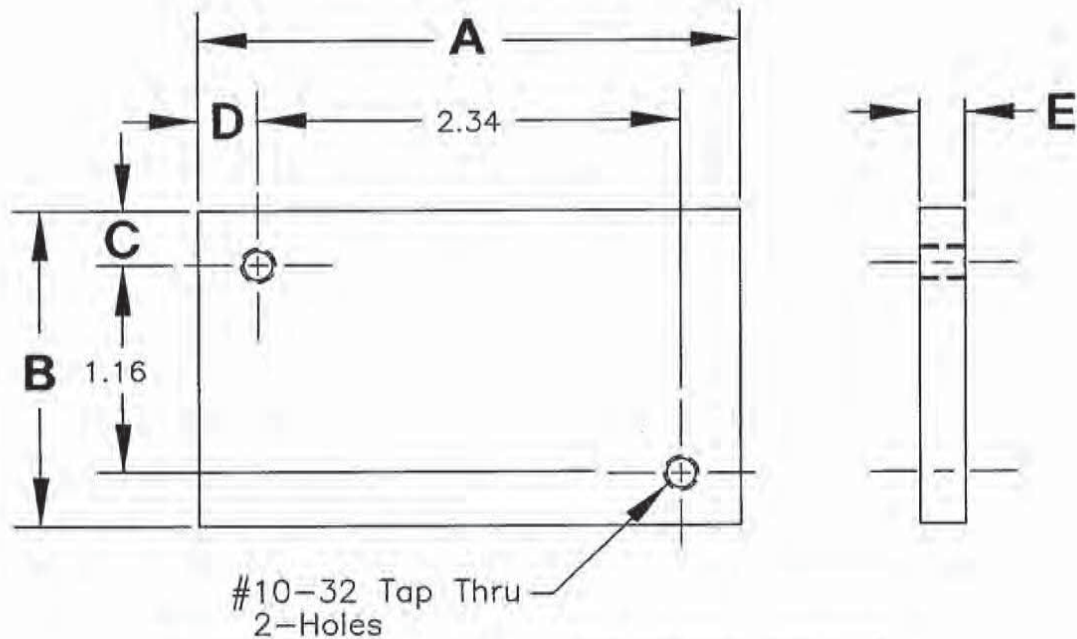
Each Foot Assy. Includes:

- (1) Boot - Welded Construction
- (1) Floor Pad - Steel
- (2) Leveling Screws - 3/4-10 x 3" Lg. Hex Hd. Bolt w/Locknut
- (2) Shipping Bolts - 1/2" Hex. Hd. Bolt w/Locknut

Finish: None (Cust. to finish as req'd.)

Detail Standard Co.

LIMIT SWITCH PLATE



PART NO.	A	B	C	D	E	CAD FILE NO.
SW-001	3.00	1.75	.30	.33	.25	SW001
SW-002	4.00	1.75	.30	.33	.25	SW002
SW-003	5.00	1.75	.30	.33	.25	SW003
SW-004	3.00	2.00	.42	.33	.25	SW004
SW-005	4.00	2.00	.42	.33	.25	SW005
SW-006	5.00	2.00	.42	.33	.25	SW006

Material: 1018 C.R.S.

Finish: Black Oxide

Model Number Development

Detail Standard Switch Plate

SW-3.25-2.00-.42-.25-.50



NOTE: Sizes in chart above are standard. Other sizes may be ordered as "special" items, using "Model Number Development" format.